



# Dreamer Autoshade Left Side Mounting Nub Replacement

Replace left side mounting nub Dreamer Autoshade

Written By: David

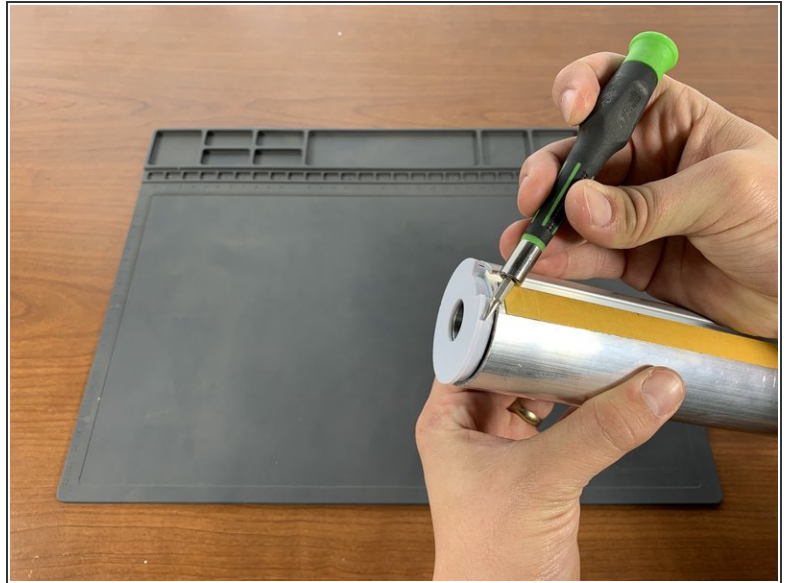




## TOOLS:

- [Flathead Screwdriver](#) (1)
-

## Step 1 — Remove bearing cap



- Pry off the left side bearing cap with a flat head screw driver.

## Step 2 — Replace nub



- Tilt the idle tube so the nub falls out.
- Replace the nub into the bearing cap.

### Step 3 — Replace bearing cap



- Push the completed bearing cap and nub onto the end of the tube. Be careful not to push the nub back into the tube.

To reassemble your device, follow these instructions in reverse order.