



Dreamer Autoshade Battery Box Reset

Reset a nonresponsive battery box for the Dreamer Autoshade

Written By: David





TOOLS:

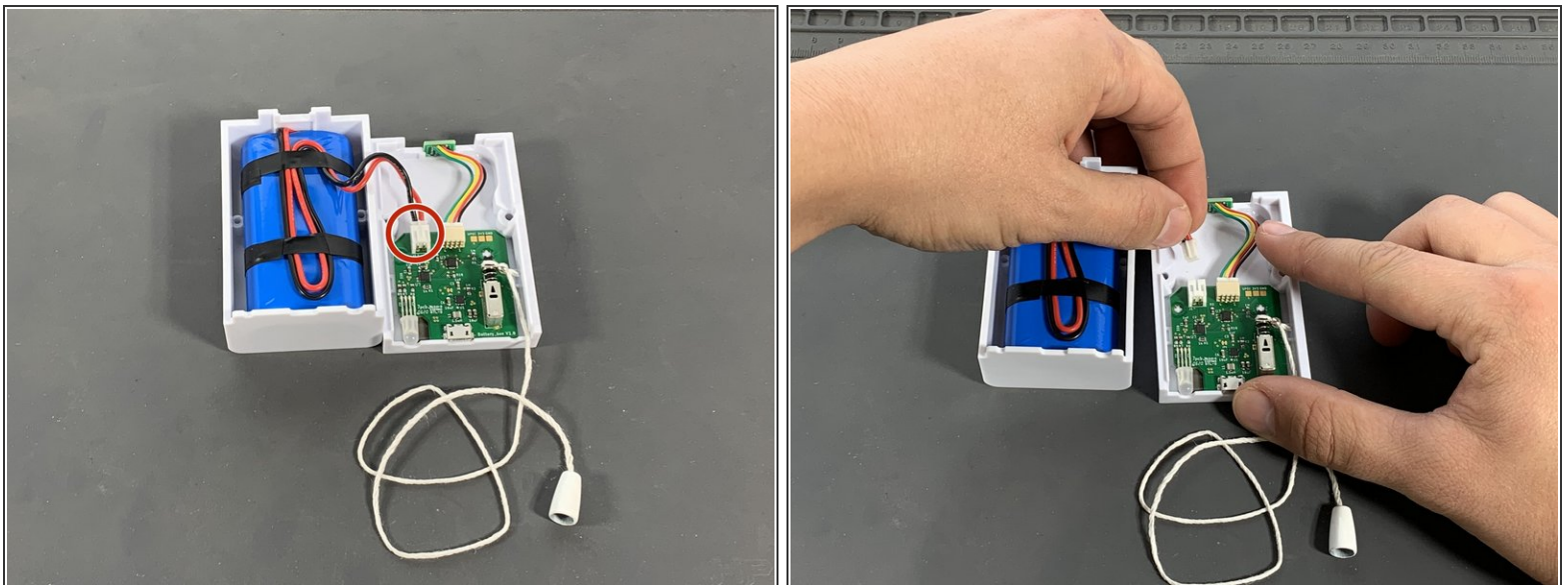
- [Phillips #1 Screwdriver](#) (1)
-

Step 1 — Remove holding screws



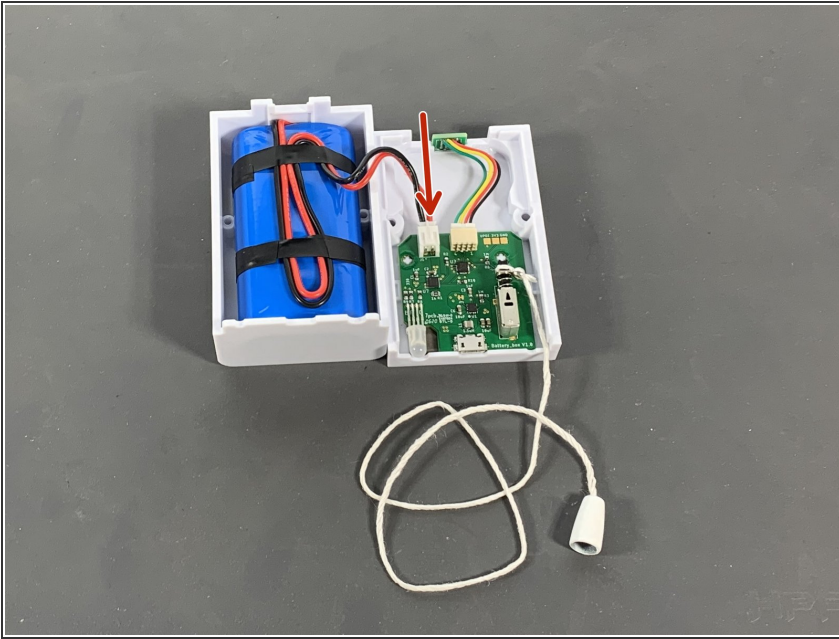
- Remove the two Phillips plastic threading screws with a #1 Phillips head screwdriver.

Step 2 — Disconnect battery pack connector



- Disconnect the battery pack connector.

Step 3 — Reconnect the battery pack connector



- After a few seconds, reconnect the battery pack to the circuit board.

Step 4 — Close and secure the battery box



- Hold the battery box together and insert one screw. Try tightening the screw. If the screw does not tighten, remove the screw and insert it again. The screw must be inserted straight to catch the threaded hole.
- Repeat the above step for the second screw.

To reassemble your device, follow these instructions in reverse order.