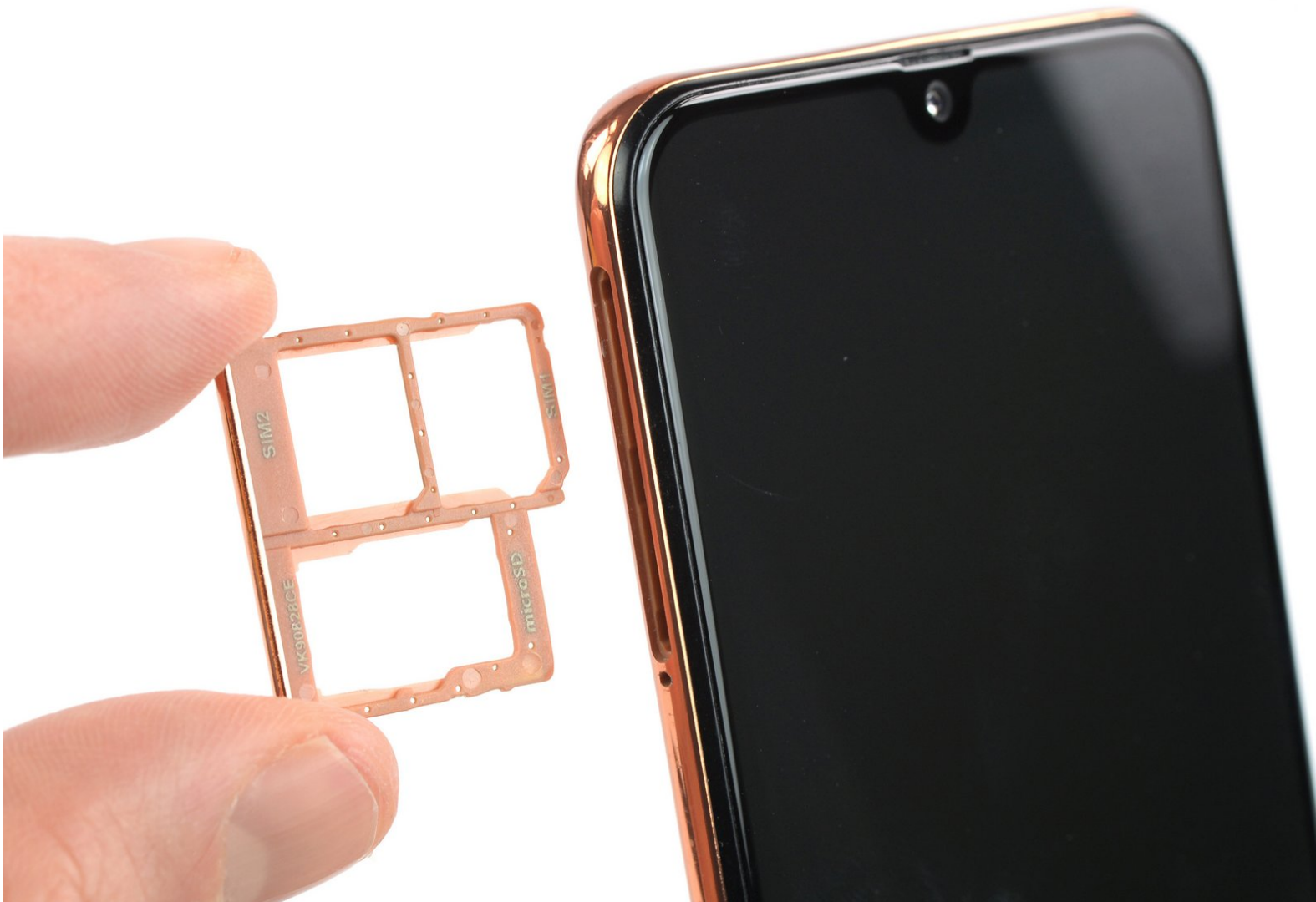




Samsung Galaxy A40 SIM Tray Replacement

How to eject the SIM card tray in your Samsung Galaxy A40.

Written By: Adriana Zwink



INTRODUCTION

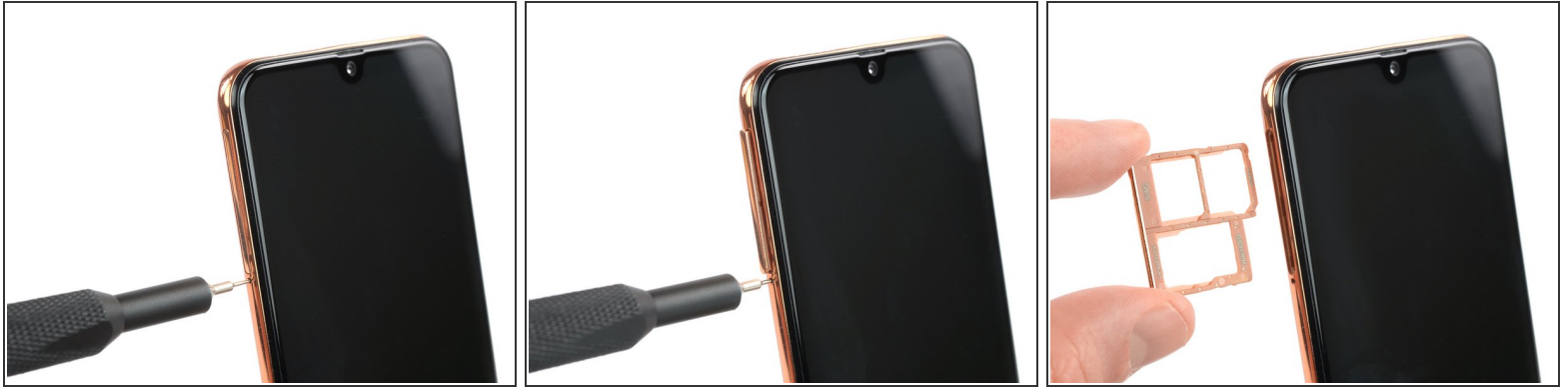
Use this guide to eject the SIM card tray in your Samsung Galaxy A40. Ejecting this hybrid SIM tray allows you to add a microSD memory card, replace the nano SIM card or add a second nano SIM card.




TOOLS:

- [SIM Card Eject Tool](#) (1)
-

Step 1 — Remove the SIM tray



- Insert a SIM card eject tool, a SIM eject bit or a straightened paper clip into the hole on the SIM tray located on the left side of the phone.
 - Press your SIM card eject tool firmly into the hole in order to eject the SIM card tray.
 - Remove the SIM card tray.
-  When reinserting the cards, make sure to properly orient them in the tray.

To reassemble your device, follow these instructions in reverse order.