



Stanley ST-222A-120 Pressure Sensor Replacement

This guide explains how to replace a broken or damaged pressure sensor in your Stanley ST-222A-120 Heavy-Duty Electric Heater.

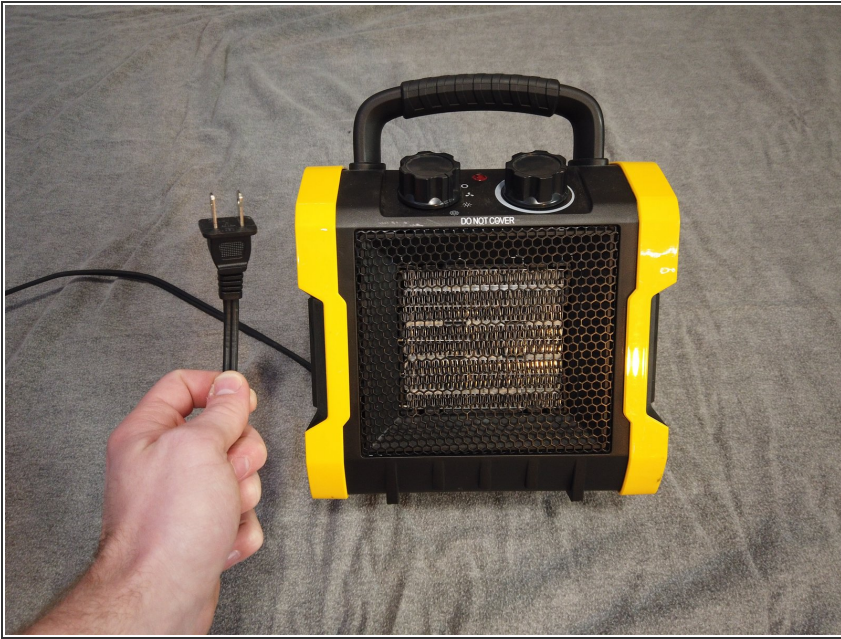
Written By: Miles Henderson




INTRODUCTION

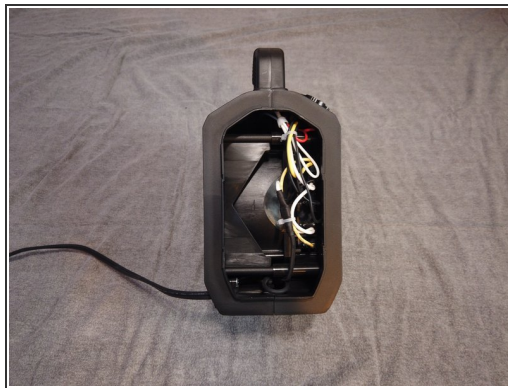
- If your Stanley ST-222A-120 Heavy-Duty Electric Heater isn't working or turning on at all it might be because the pressure plate at the bottom of the device is broken or isn't being pushed down all the way.
- The pressure plate and pressure sensor is a safety feature on the heater. If the pressure plate isn't pushed down all the way the device thinks the heater may have tipped over and won't let itself turn on.
- Before using this guide, inspect the heater and make sure that the heater's pressure plate, on the bottom of the device, is there and that it is not damaged.
- You don't need any tools for this guide, although on step 6 a pair of needle nose pliers may be helpful.
- Before beginning make sure to unplug the device so that you do not accidentally electrocute yourself during the procedure.

Step 1 — Pressure Sensor



 Unplug the heater for safety during your repair.

Step 2



- With your hands gently remove the plastic covers on either side of the heater.

Step 3



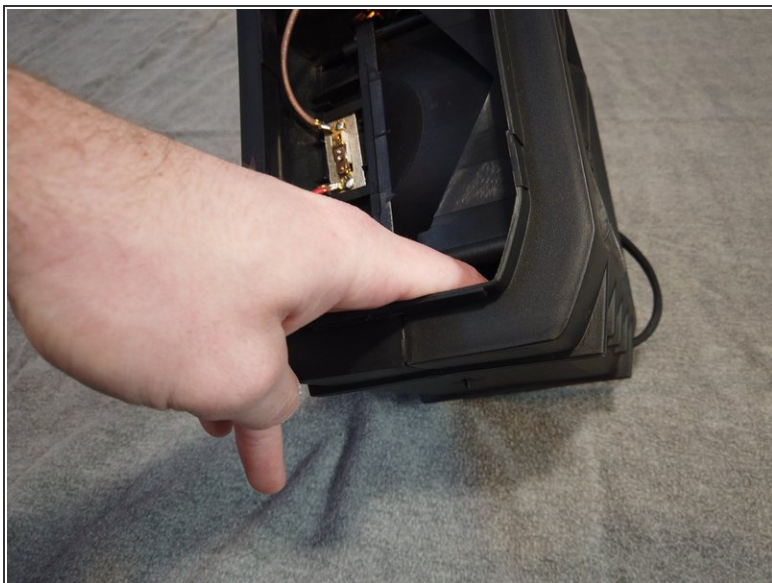
- Use your hands to pry apart the plastic halves of the heater to see the internals of the device.

Step 4



- Locate small pressure sensor replacement and small pressure pin at the bottom of the device.

Step 5



- Use your hands to help guide the pressure pin back into a position where the replacement plate can slide back onto it.
- ⓘ Needle nose pliers may be a good assistant in this situation.

Step 6



- While the plastic is open hold the pin out with a finger.
- Line up the pressure plate to the pressure pin.

Step 7



- Gently put the pressure plate back onto the pressure pin.

Step 8



- Carefully press the plastic back together.
- ⓘ Be conscious not to interrupt the placement of the newly repaired pressure plate.

To reassemble your device, follow these instructions in reverse order.