



How to Stitch a Hole on the Seam of a T-Shirt

Learn how to fix a t-shirt tear on a seam with these easy steps!

Written By: Aylin Castillo



INTRODUCTION

If you have a tear on the seam of your t-shirt, use this guide to patch up the tear. Before you begin, turn the shirt inside out and spread out the shirt evenly on a flat surface to get a better look at how large the hole is. Having steady hands is recommended. Be careful of the needles as they can be a little sharp and can poke you. If you want to save your shirt and wear it as many times as you like, then this is the repair for you. This guide demonstrates simple sewing techniques for a fast and easy sewing repair.

TOOLS:

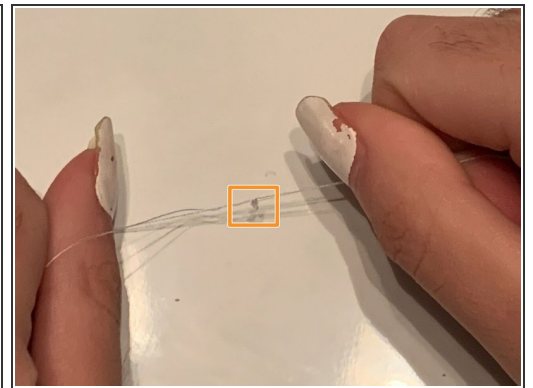
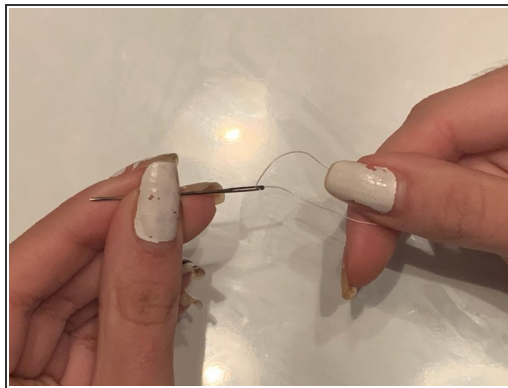
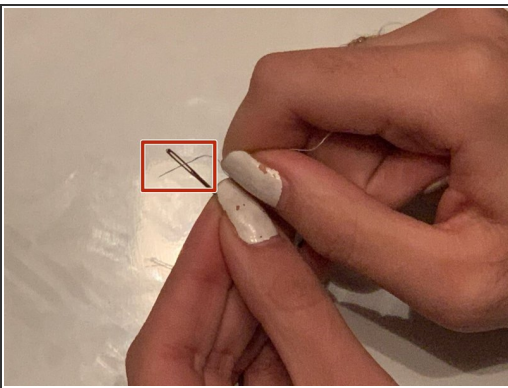
- [Boye Needlepoint Needles and All-purpose thread \(same color of T-shirt preferred\)](#). (1)
-

Step 1 — How to Stitch a Hole on the Seam of a T-Shirt



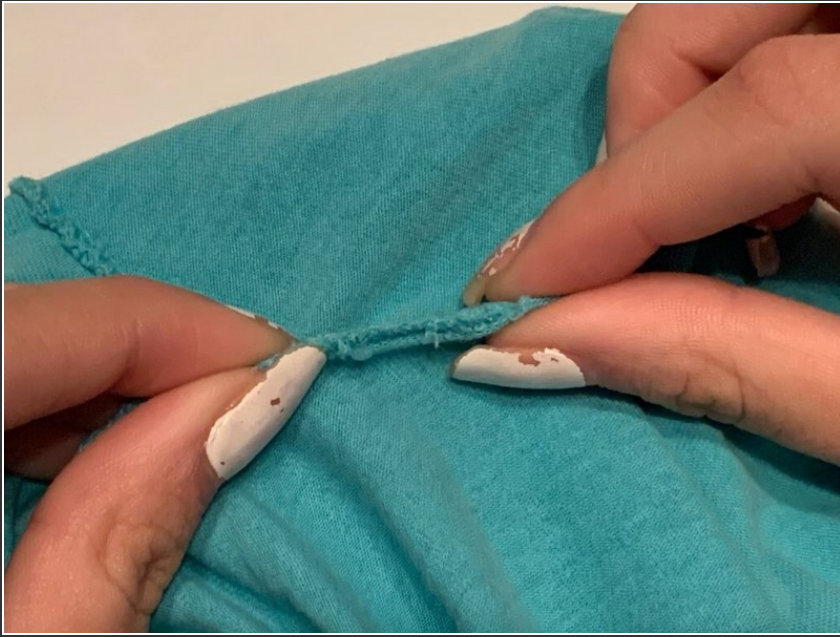
- Turn the shirt inside out. This will ensure the new seam is sewn on the inside of the shirt.

Step 2



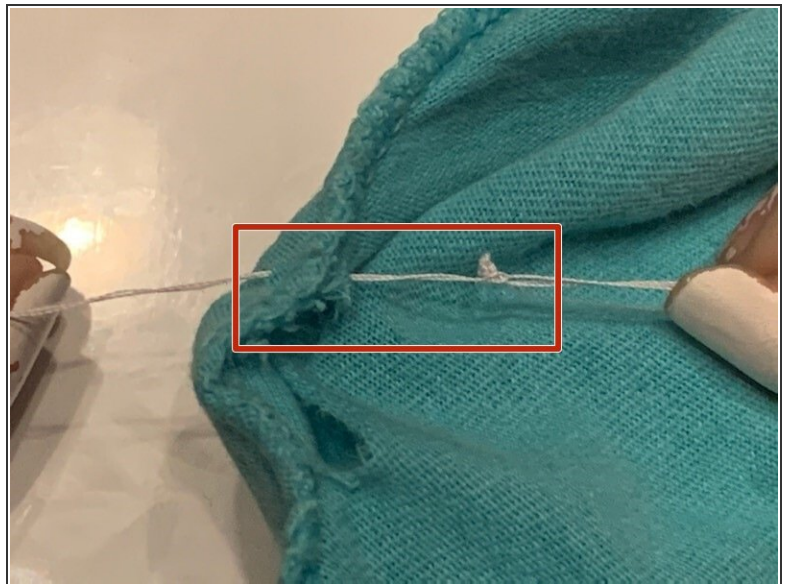
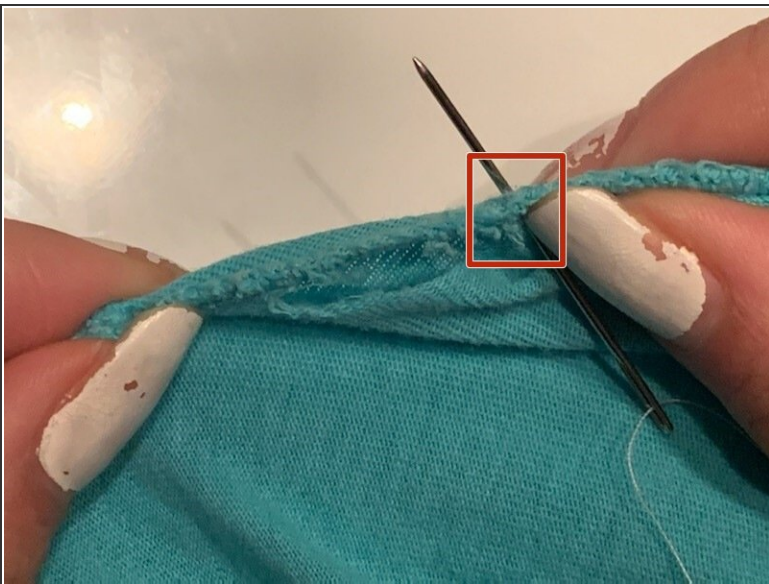
- Cut a long piece of thread and insert it into the loop of the needle .
- Tie the loose ends of the thread into a small knot.

Step 3



- Take your thumb and first finger and pinch the sides of the hole together.
- ⓘ This will create less width for the needle to go through.

Step 4



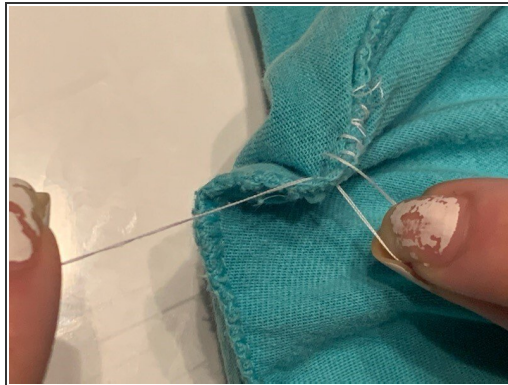
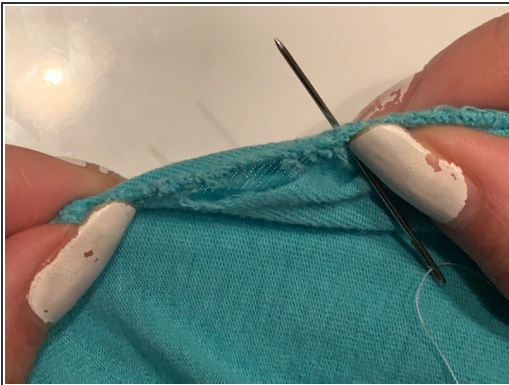
- Insert the needle on the edge of the hole.
- Place the needle right below the tear of the fabric.
- ⓘ Make sure the knot of thread does not follow the needle while stitching and stays on the outside of the fabric.

Step 5



- To secure the knot of thread, place the needle within the outside loop of thread and pull the needle through.
- ⓘ This will establish a firm base for a stitch.

Step 6



- With a firm pinch, start stitching the tear together by inserting the needle through both sides of the fabric, coming back to the side the needle was inserted on, and pulling tightly.
- ⓘ Make sure the thread does not get tangled, and make your stitches as close to one another as possible.
- Continue this step until you have reached the end of the tear.

Step 7



- Once completed, take the needle and thread back to the first stitch.
- Insert the needle through the first stitch until the thread has made a small loop outside of the seam.
- Insert the needle through the small loop and pull tightly.
- Repeat this step to secure the stitching from unraveling and cut the thread as close to the new seam as possible.