



Toro Stump Grinder 22615HD 2017

Centrifugal Clutch Replacement

Follow this guide to replace the centrifugal...

Written By: Sam Omiotek



INTRODUCTION

Follow this guide to replace the centrifugal clutch on a 2017 Toro Stump Grinder model 22615HD.

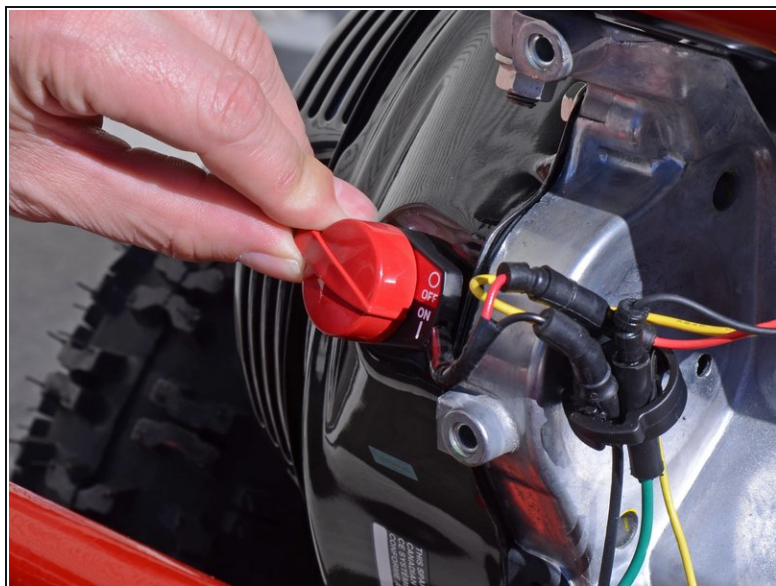
TOOLS:

Socket Wrench (1)
9/16" socket (1)
1/2" Socket (1)
Painter's Tape (1)
9/16" Wrench (1)
1/2" Wrench (1)
14mm Socket (1)
2-Jaw Gear Puller (1)
Impact Wrench (1)

PARTS:

Toro Wheel And Bearings Kit 136-1441 (1)
Toro NUT-FLANGE, LOCK 127-6852 (1)

Step 1 — Turn off the power



 Before you begin, ensure the machine is powered down and cool to the touch.

- Turn the ignition switch to the off position.

Step 2 — Close the fuel valve



- Flip the fuel cutoff valve switch into the off position.

Step 3 — Disconnect the spark plug



- Grab the plastic housing at the end of the spark plug wire.
- Pull firmly to disconnect the wire from the spark plug.

Step 4 — Tilt the cutter wheel up



- Tilt the machine so that it is resting on the handle with the cutter wheel raised.

Step 5 — Remove the belt guard



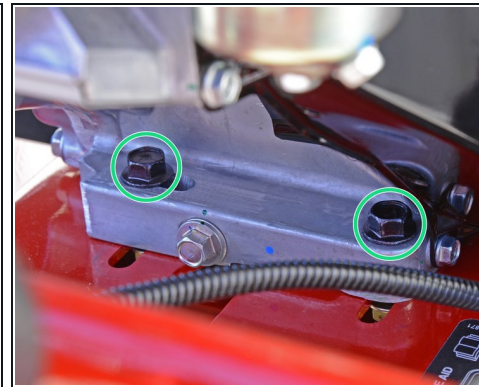
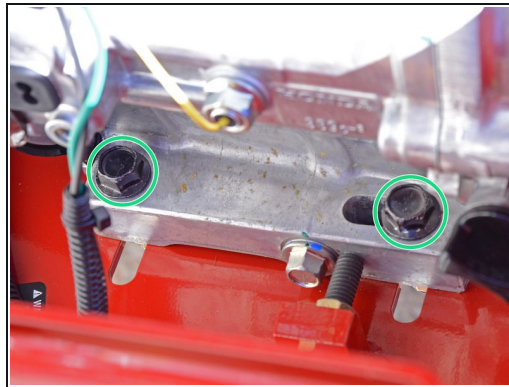
- Use a 14 mm socket to remove the fasteners securing the belt guard:
 - One 10 mm bolt
 - One 10 mm nut

Step 6



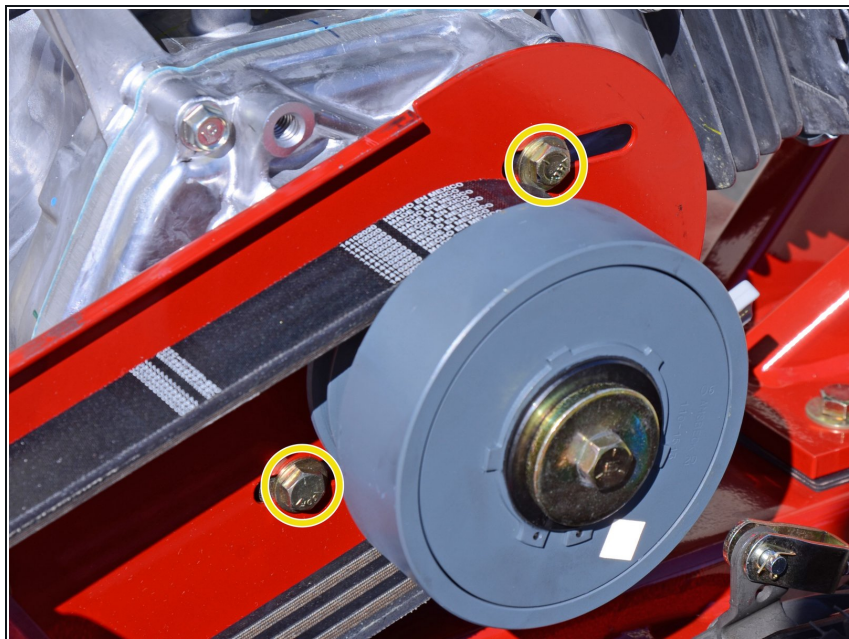
- Remove the belt guard.

Step 7 — Remove the drive belt



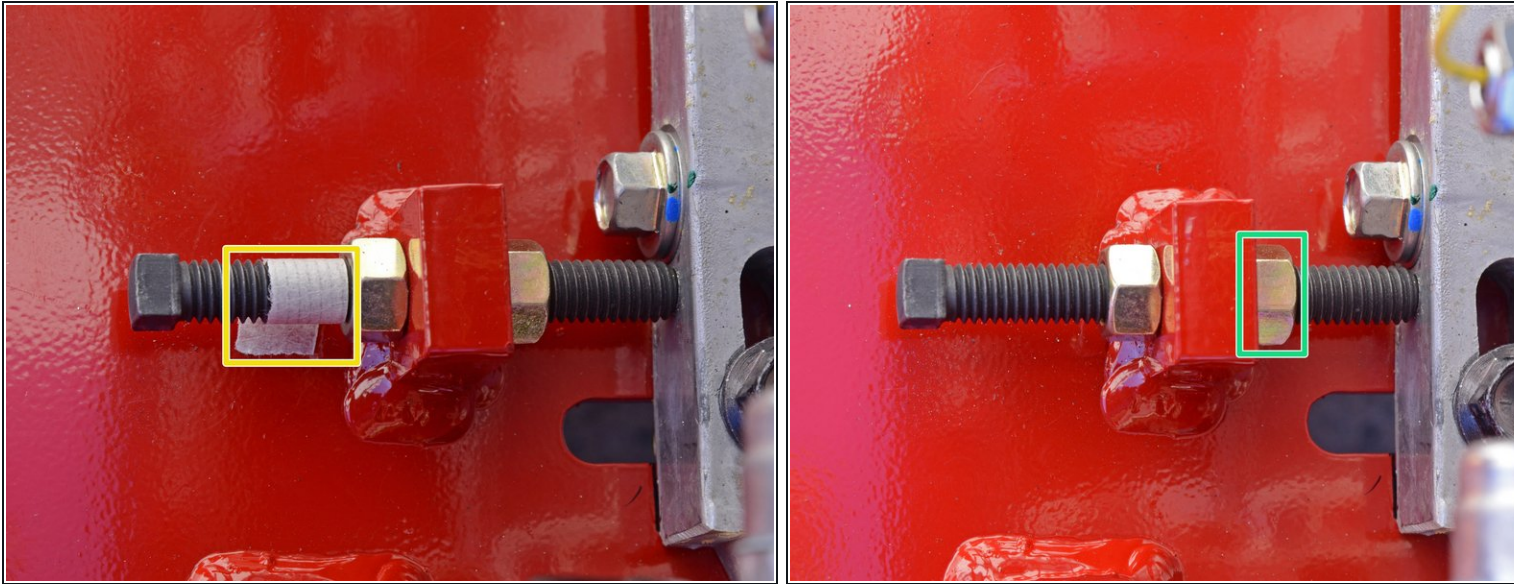
- Use a 9/16 inch socket to loosen the four nuts securing the bottom of the motor enough to allow the motor to slide freely. Do not remove the nuts.
- Use a 1/2 inch wrench in combination with the socket wrench to hold the bolts in place.

Step 8



- Use a 1/2 inch wrench to loosen the two bolts behind the centrifugal clutch enough to allow the motor to slide freely. Do not remove the bolts.

Step 9



- Wrap a piece of tape around the upper half of the tensioner bolt to mark the location of the second nut.
- Use a 9/16 inch wrench to loosen the nut on the lower half of the tensioner bolt until the motor can slide forward as much as possible.
- ☑ During reassembly, reference the tape to position the outer nut into the same location as before to ensure proper belt tension.

Step 10



- Slide the engine towards the cutter blade to loosen the drive belt.

Step 11



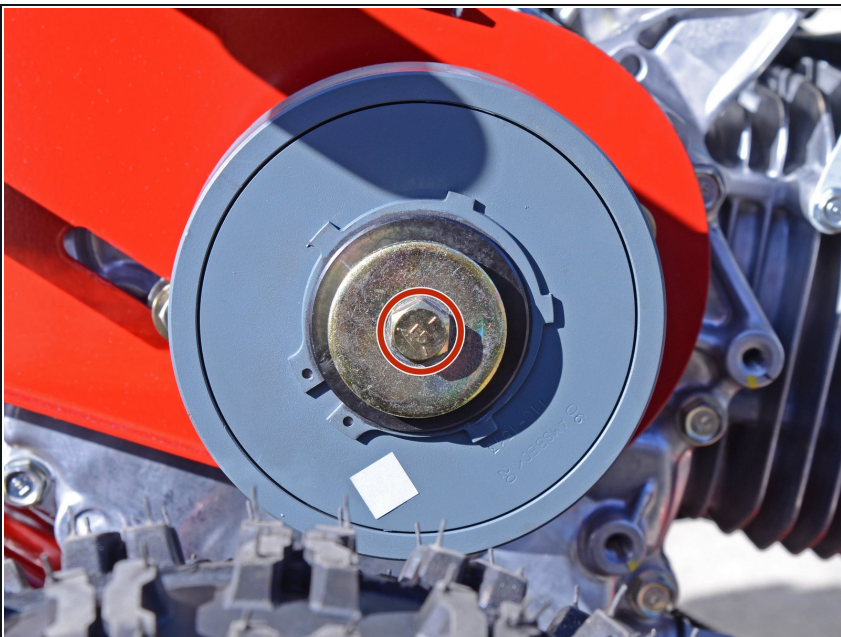
- Lift the drive belt up and away from the machine while rolling it towards the cutter head to gradually roll it off of the pulley.

Step 12



- Remove the drive belt.

Step 13 — Remove the centrifugal clutch



- Use an impact wrench with a 9/16 inch socket to remove the bolt and washer securing the centrifugal clutch to the spindle.

Step 14



- Use a jaw puller to extract the centrifugal clutch from the spindle:
- Place the center screw so that it is in line with the center of the spindle.
- Hook the jaws around the back edge of the clutch assembly.
- Tighten the center screw until the centrifugal clutch is removed from the spindle.

Step 15



- Remove the centrifugal clutch and shaft key from the spindle.

To reassemble your device, follow these instructions in reverse order.