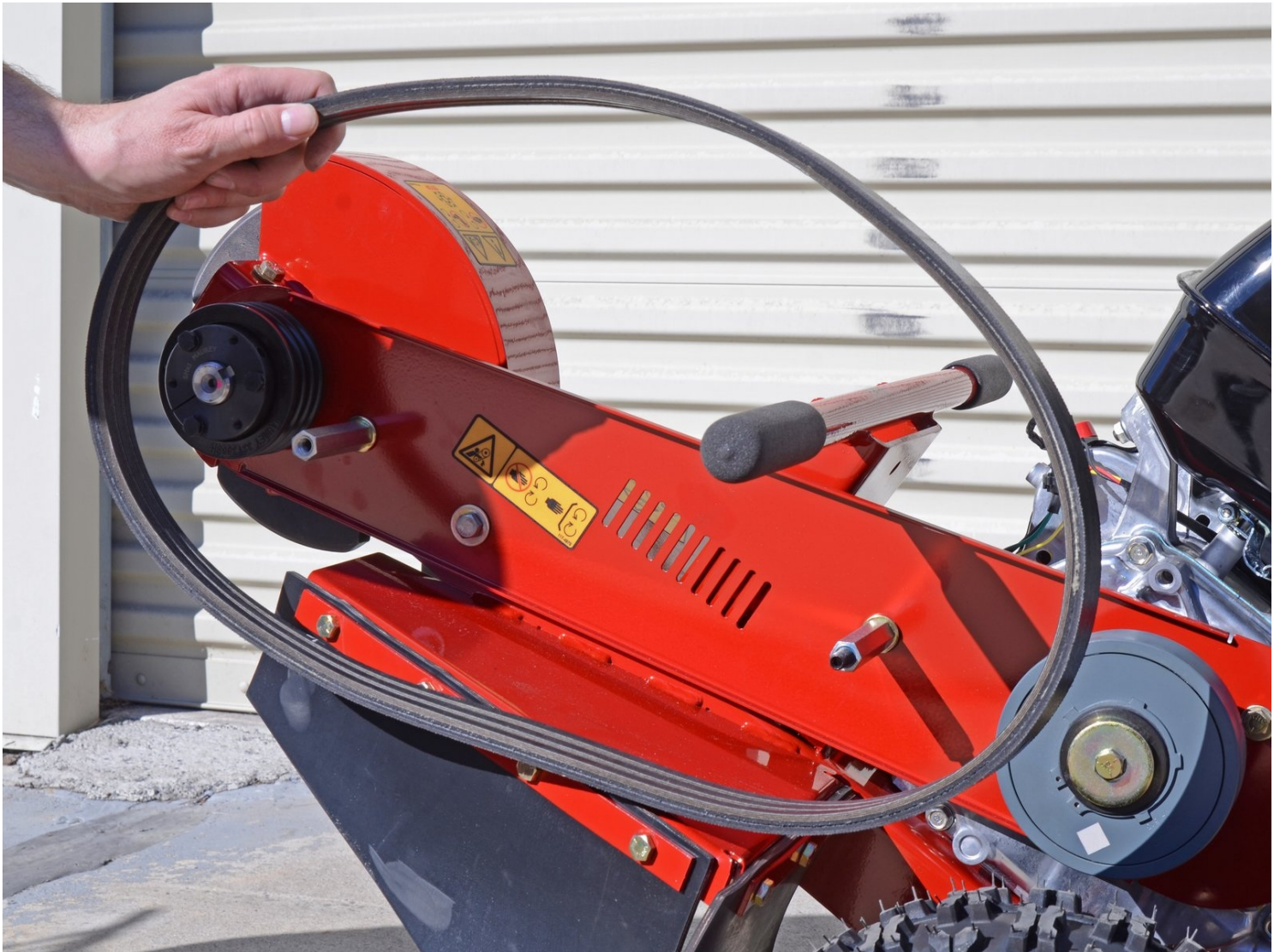




Toro Stump Grinder SGR-13 22615HD 2017 Drive Belt Replacement

Follow this guide to replace the drive belt on...

Written By: Sam Omiotek



INTRODUCTION

Follow this guide to replace the drive belt on a 2017 Toro Stump Grinder SGR-13 model 22615HD.

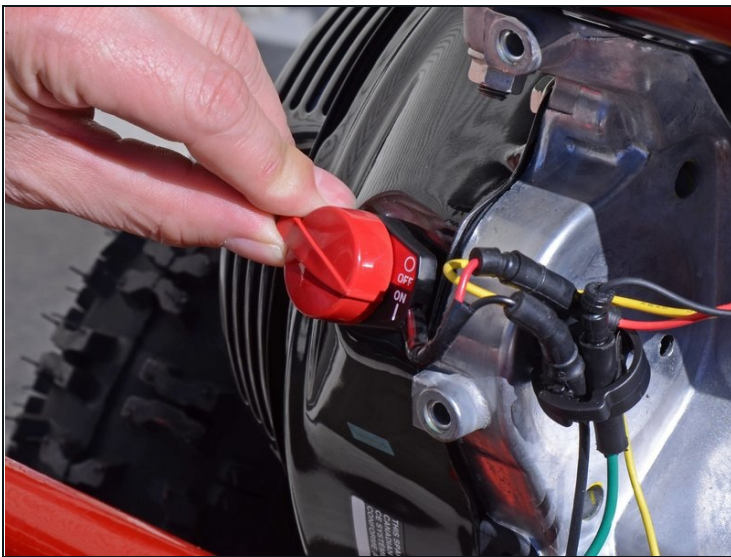
TOOLS:

14mm Socket (1)
Socket Wrench (1)
9/16" socket (1)
1/2" Wrench (1)
Painter's Tape (1)
9/16" Wrench (1)

PARTS:

Toro Belt 3V 120-1203 (1)

Step 1 — Turn off the power



 Before you begin, ensure the machine is powered down and cool to the touch.

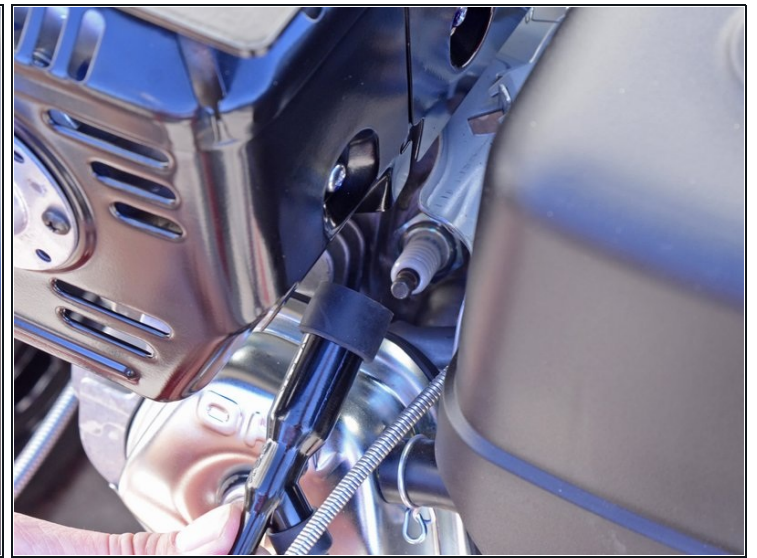
- Turn the ignition switch to the off position.

Step 2 — Close the fuel valve



- Flip the fuel cutoff valve switch into the off position.

Step 3 — Disconnect the spark plug



- Grab the plastic housing at the end of the spark plug wire.
- Pull firmly to disconnect the wire from the spark plug.

Step 4 — Tilt the cutter wheel up



- Tilt the machine so that it is resting on the handle with the cutter wheel raised.

Step 5 — Remove the belt guard



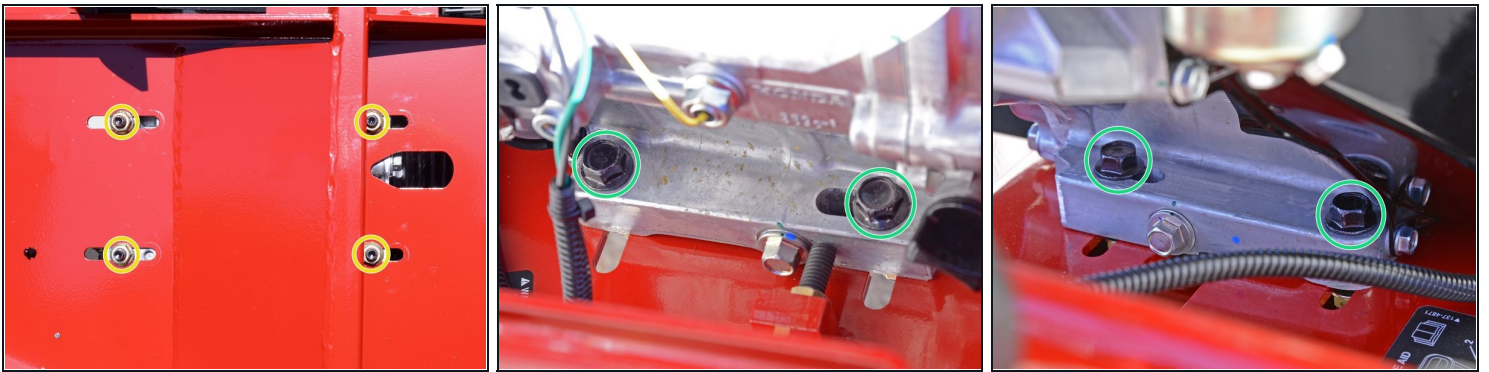
- Use a 14 mm socket to remove the fasteners securing the belt guard:
 - One 10 mm bolt
 - One 10 mm nut

Step 6



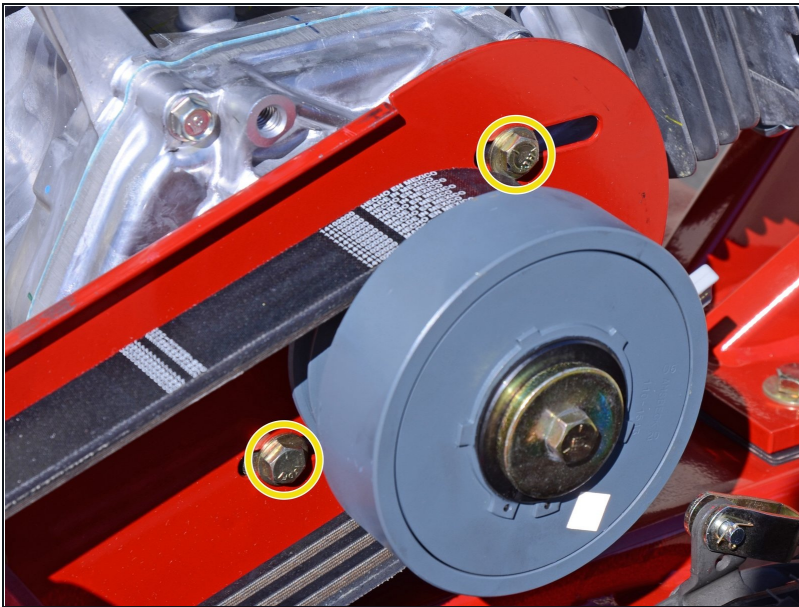
- Remove the belt guard.

Step 7 — Remove the drive belt



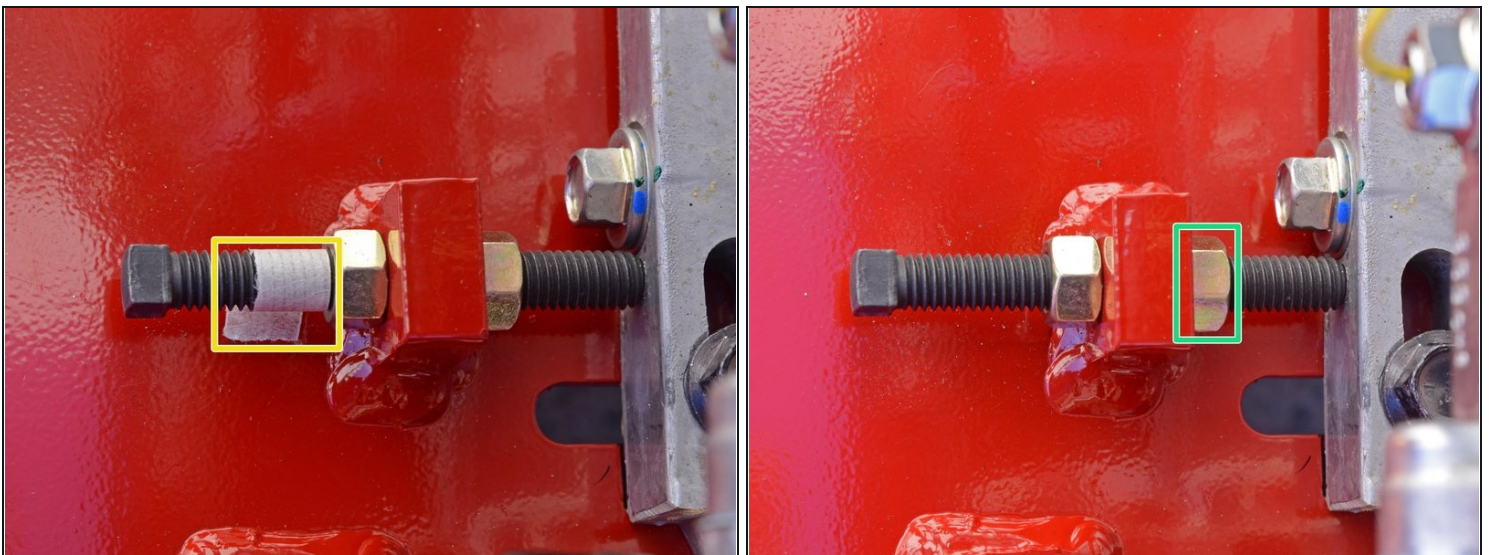
- Use a 9/16 inch socket to loosen the four nuts securing the bottom of the motor enough to allow the motor to slide freely. Do not remove the nuts.
- Use a 1/2 inch wrench in combination with the socket wrench to hold the bolts in place.

Step 8



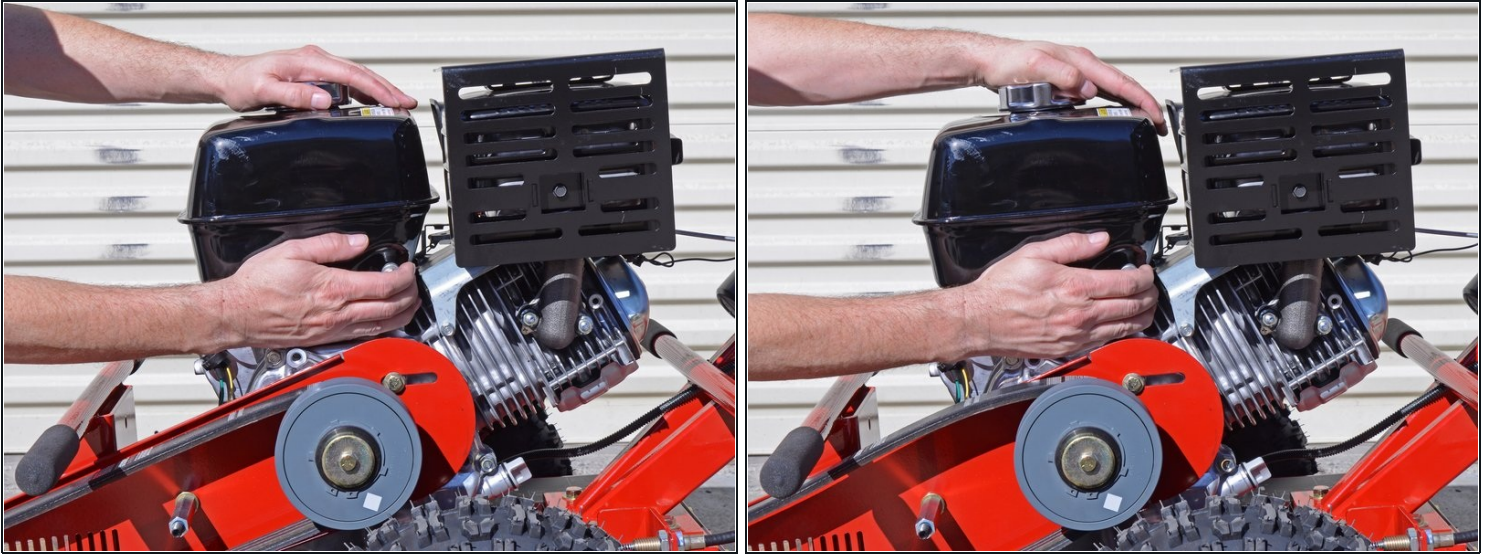
- Use a 1/2 inch wrench to loosen the two bolts behind the centrifugal clutch enough to allow the motor to slide freely. Do not remove the bolts.

Step 9



- Wrap a piece of tape around the upper half of the tensioner bolt to mark the location of the second nut.
- Use a 9/16 inch wrench to loosen the nut on the lower half of the tensioner bolt until the motor can slide forward as much as possible.
- ☑ During reassembly, reference the tape to position the outer nut into the same location as before to ensure proper belt tension.

Step 10



- Slide the engine towards the cutter blade to loosen the drive belt.

Step 11



- Lift the drive belt up and away from the machine while rolling it towards the cutter head to gradually roll it off of the pulley.

Step 12



- Remove the drive belt.

To reassemble your device, follow these instructions in reverse order.