



Samsung Galaxy A50 Display Assembly with Frame Replacement

Use this guide to replace cracked screen.

Written By: ZFix



INTRODUCTION

[video: <https://youtu.be/rFTfeBIP59w>]



TOOLS:

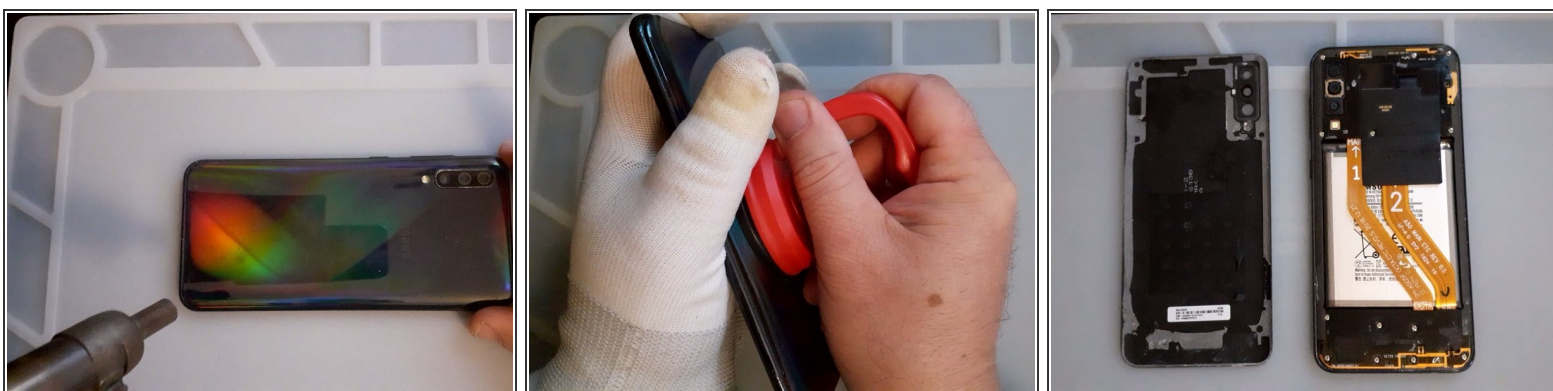
- [Phillips #0 Screwdriver](#) (1)
 - [Tweezers](#) (1)
 - [Hot Air Rework Station Hakko FR-810](#) (1)
 - [iFixit Opening Tools](#) (1)
 - [Spudger](#) (1)
-

Step 1 — LCD Display Assembly replacement



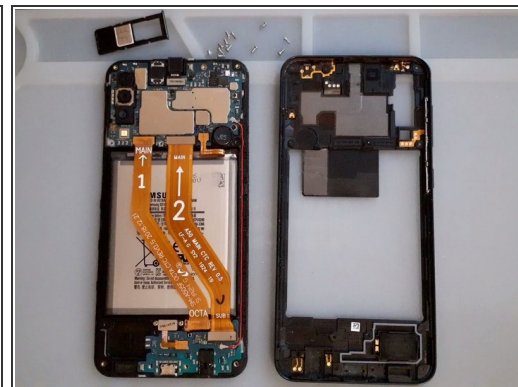
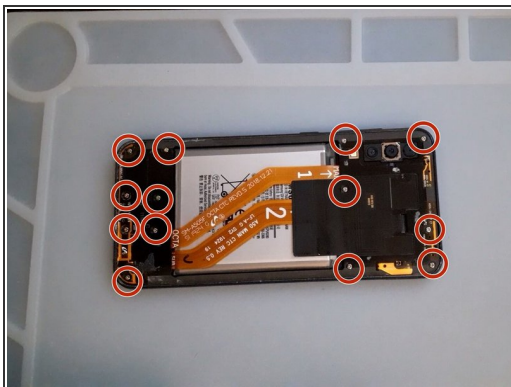
- Display Touch Screen Digitizer Assembly with Frame for Samsung Galaxy A50

Step 2 — Battery cover removal



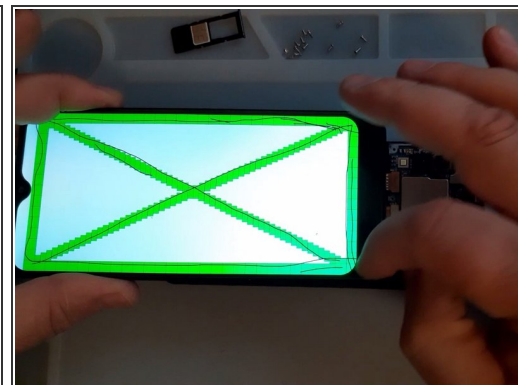
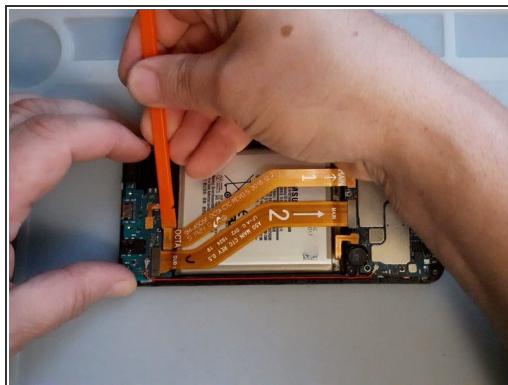
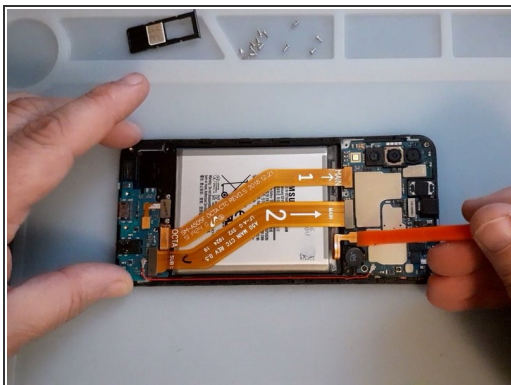
- Heat up the back cover to loosen the adhesive.
- To separate the back cover use a Suction Cup and plastic tools.

Step 3 — Middle frame removal



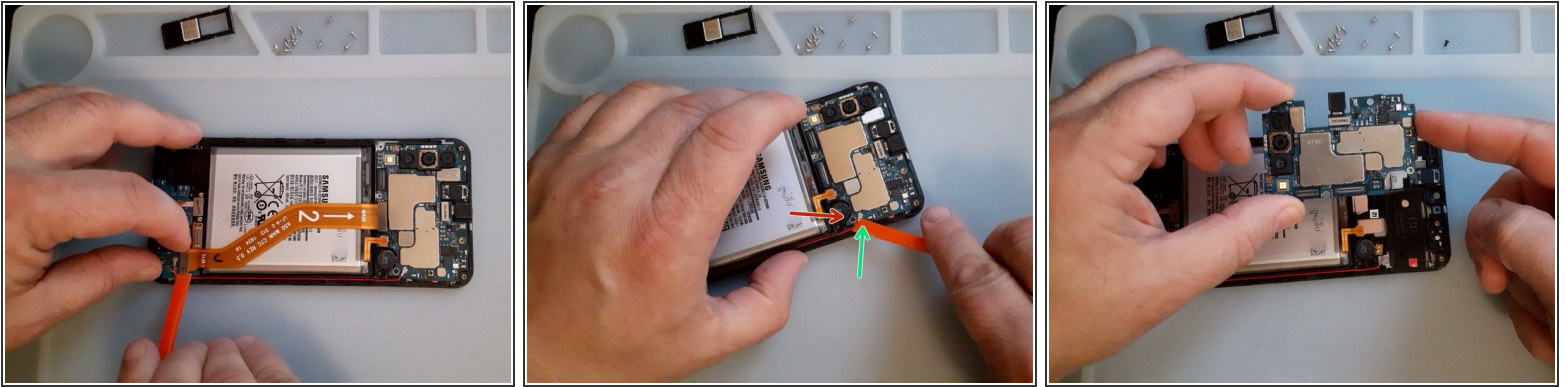
- Remove the SIM tray.
- Remove the Philips Screws.
- Again use plastic tools to separate the middle frame.

Step 4 — Test the new spare part



- First disconnect the Battery.
- Test the new spare part before the installation.

Step 5 — Logic board removal



- Disconnect and remove the Main Flex Cable.
- Remove the black Philips screw, it's shorter than the middle frame screws.
- Disconnect the coaxial antenna cable.
- Now you can remove the logic board.

Step 6 — Sub board removal



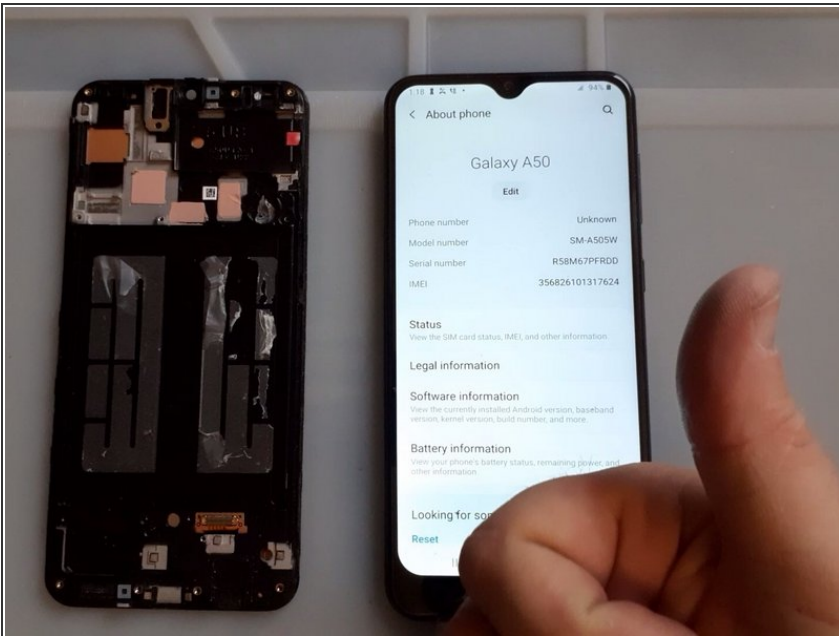
- First remove the Fingerprint sensor.
- ⚠ The screws for the Fingerprint are shorter.
- It's better to use hot air before to disassemble the sub-board.
- Reminder - only plastic tools :)

Step 7 — Battery removal



- Again, hot air, plastic tools and very slowly remove the battery.

Step 8



- All's Well That Ends Well

To reassemble your device, follow these instructions in reverse order.