



# Disassembling ZTE Racer II Phone

This guide will show you how to disassemble a ZTE Racer II.

Written By: Jacob





## TOOLS:

- [Flathead 3/32" or 2.5 mm Screwdriver](#) (1)
  - [Tweezers](#) (1)
  - [Phillips #00 Screwdriver](#) (1)
-

## Step 1 — Phone



- Carefully prise the back cover off the phone.

## Step 2



- Remove Battery, SIM Card, and MicroSD
- Remove the four screws located around the edge of the case. They should be very small phillips heads.

## Step 3



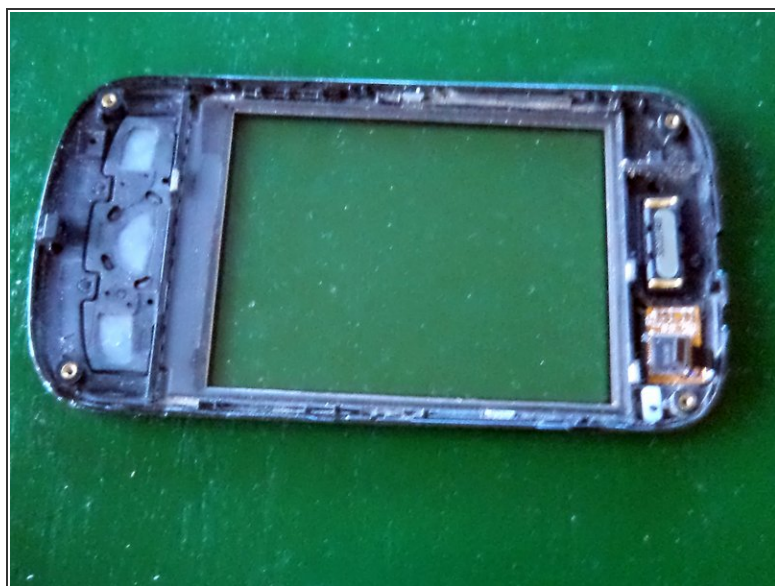
- Using a flathead screwdriver, carefully prise the black plastic away. It's held in with a series of clips, and should come away easily.

## Step 4



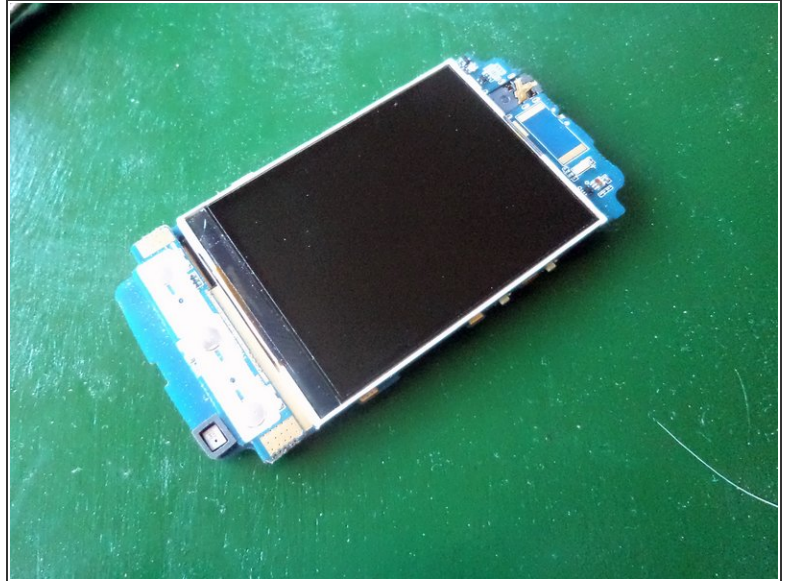
- Carefully remove the ribbon cable that connects the capacitive screen to the main board. You need to carefully lift the small tab, then pull the cable out.

## Step 5



- Now using the flathead screwdriver, prise the plastic that makes up the front, away from the circuit board. Like the back piece, it has a series of clips around the edge, and should lift free without much effort.

## Step 6



- There you have it. Amazingly simple to take apart this phone.

To reassemble your device, follow these instructions in reverse order.