



Canon PowerShot SX170 IS Disassembly

Written By: JockiToru





TOOLS:

- [Phillips #00 Screwdriver](#) (1)
 - [iFixit Opening Tool](#) (1)
-

Step 1 — Case



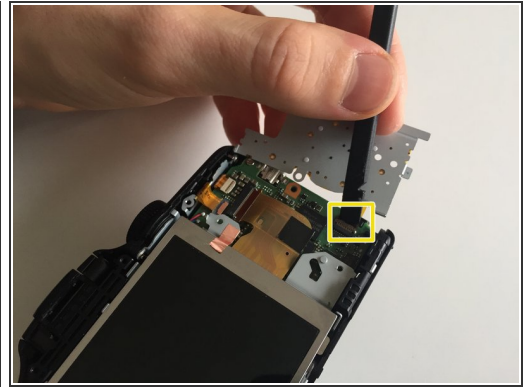
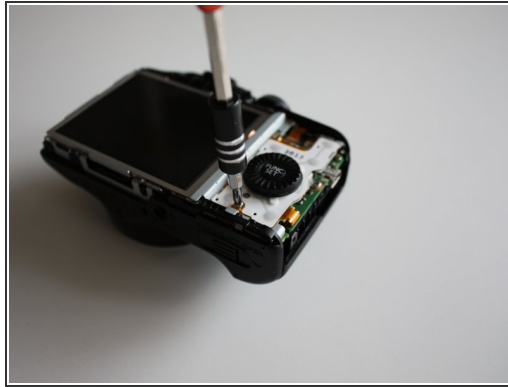
- Remove the screws that secure the back panel using a Phillips screwdriver.
- Remove screws on the bottom, left and right sides of the camera using a Phillips screwdriver.
- ⓘ Pull back the rubber facing to access the screw.

Step 2 — Case



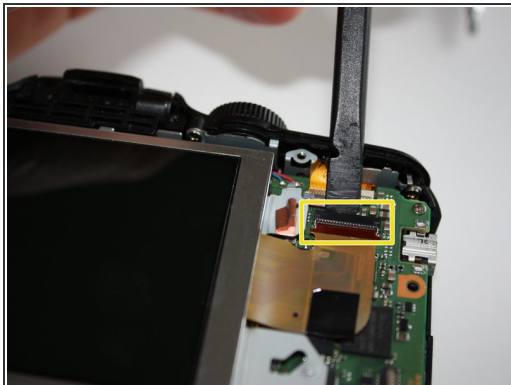
- Once all screws are removed, open up the back case with a plastic opener from the left side.

Step 3 — Function Wheel



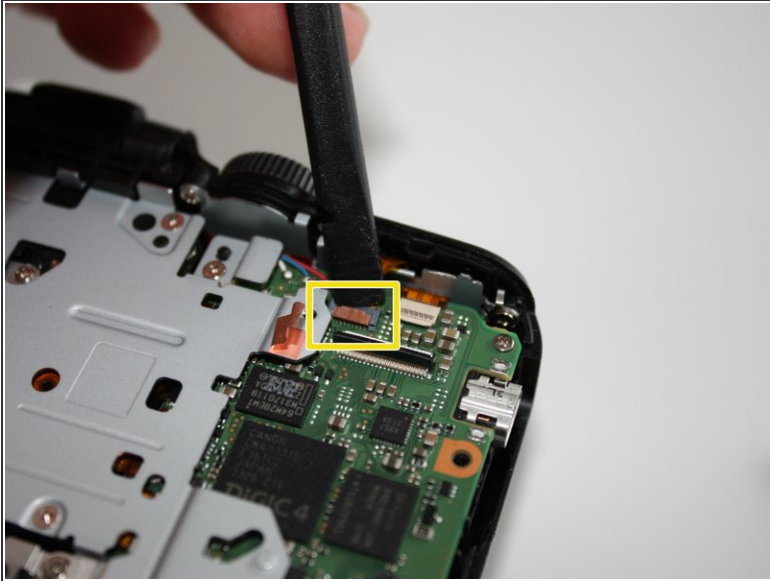
- Remove the screws that secure the small metal plate using a Phillips screwdriver.
- Gently flip up the flex ribbon lock and remove the flex ribbon.

Step 4 — Screen



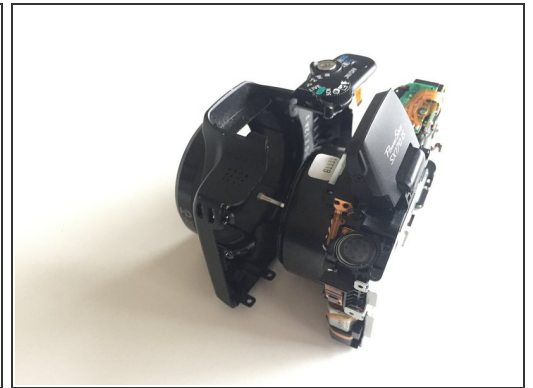
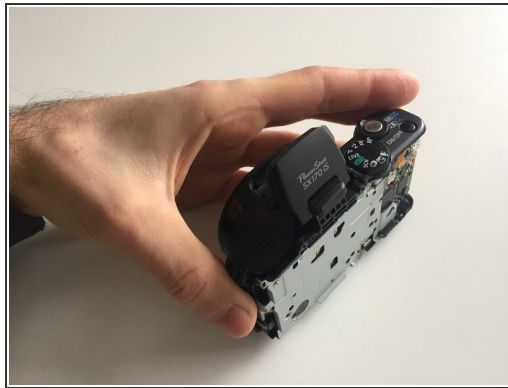
- Gently flip up the flex ribbon lock and remove the flex ribbon.
- Lift the screen to the left.

Step 5 — Front Case



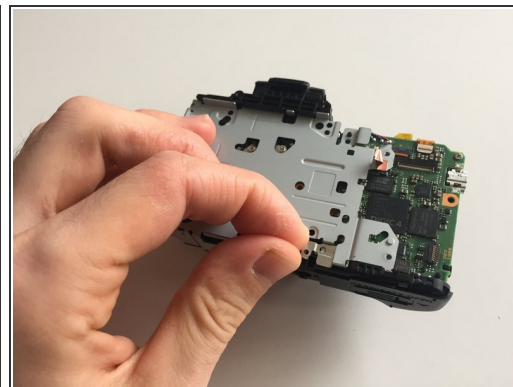
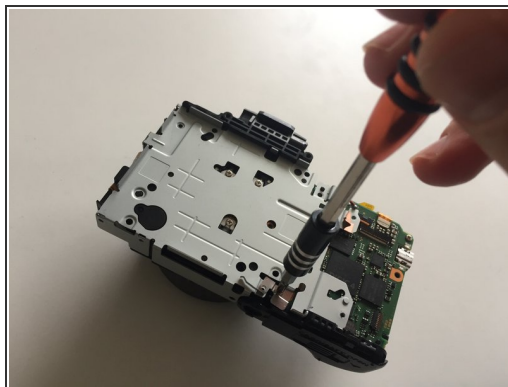
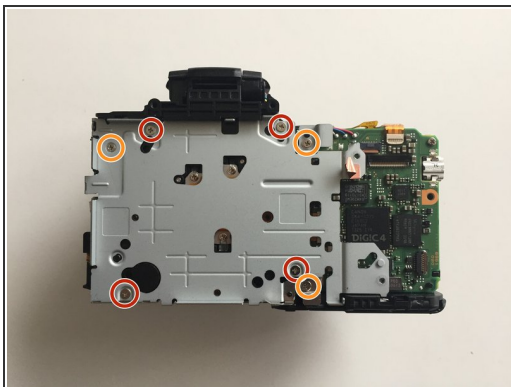
- Gently flip up the flex ribbon lock and remove the flex ribbon.

Step 6 — Front Case



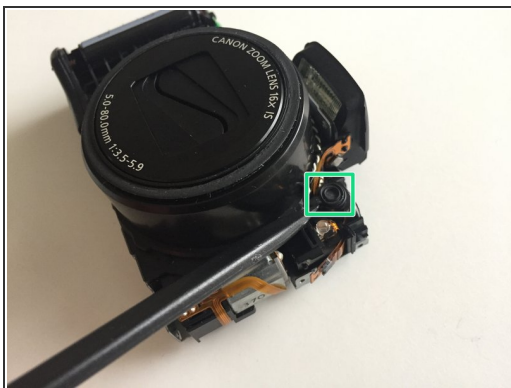
- Remove the screws below the flash and on the left sides of the camera using a Phillips screwdriver.
- ⓘ Leave the flash unfolded.
- Pull the front case forward.

Step 7 — Metal Frame



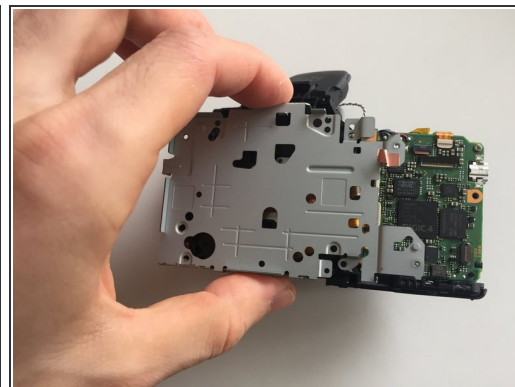
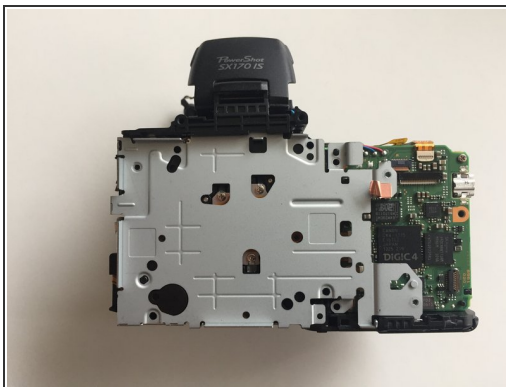
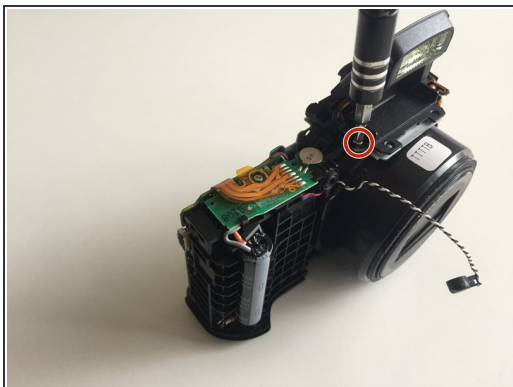
- Remove all marked screws using a Phillips screwdriver.
- Remove the small metal part.

Step 8 — Cable



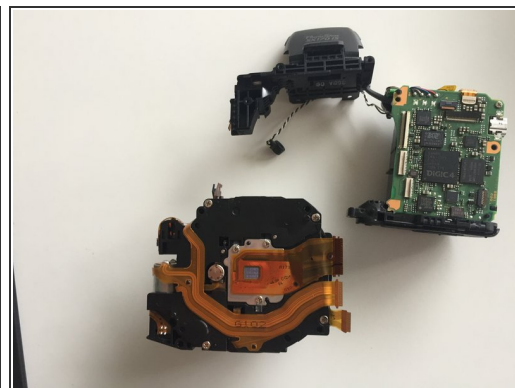
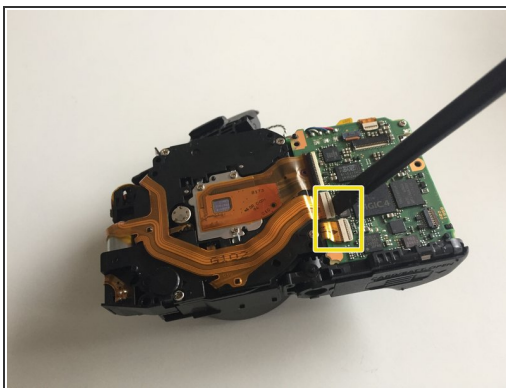
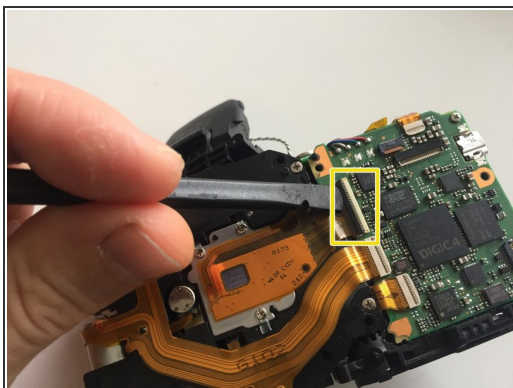
- Remove the microphone.
- Remove the flex ribbon.
- Remove the flash switch.

Step 9 — Metal Frame



- Remove the screw using a Phillips screwdriver.
- ⓘ Lift the flash a little to remove the metal frame.

Step 10 — Lens Cable



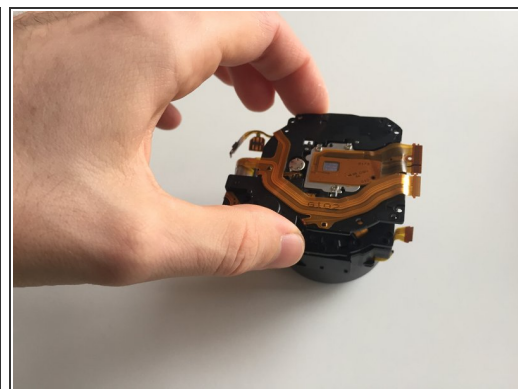
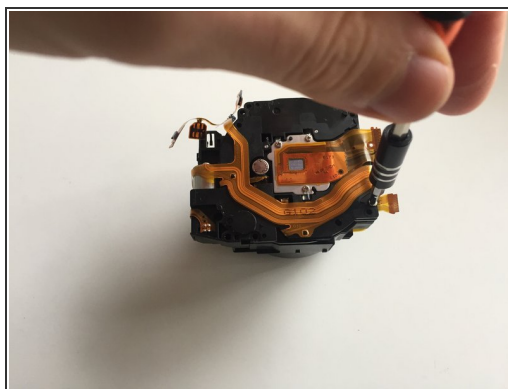
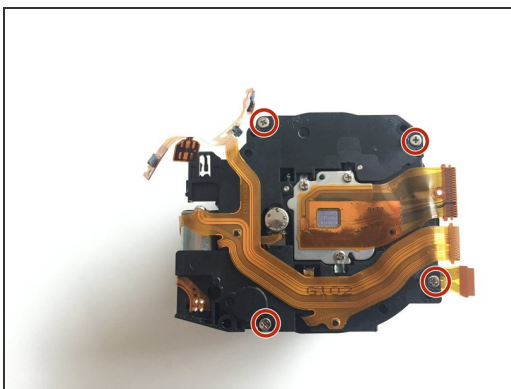
- Gently flip up the flex ribbon lock and remove the flex ribbon.

Step 11 — Lens Cable



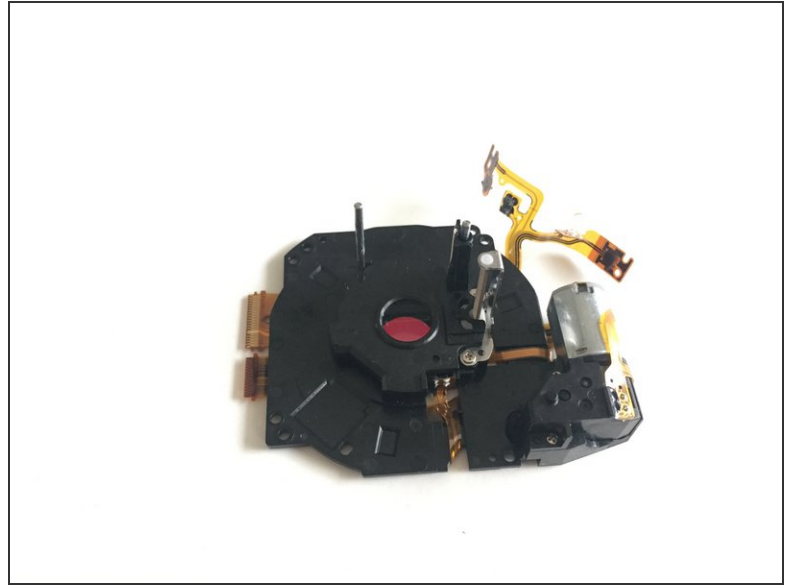
- Remove flex ribbon and light sensor.

Step 12 — Lens Screws



- Remove the screws using a Phillips screwdriver.
- Lift up the back case.

Step 13 — Lens and Sensor



- Now you can clean the lens.

To reassemble your device, follow these instructions in reverse order.