



Replacing a Nintendo GameCube Controller Stickbox

This guide will show you how to replace the...

Written By: Terry Poon



INTRODUCTION

This guide will show you how to replace the stickbox of a Nintendo GameCube controller. Stickboxes cannot be bought by first-party sellers and the ones third-party ones are not good quality . So we will be using ones from a Wii Nunchuks, another GameCube controller or by swapping with the C-stick. A little [soldering](#) is required to remove the box and soldering a new one.

🔧 TOOLS:

[Tri-point Y0 Screwdriver](#) (1)
[Soldering Iron 60w Hakko 503F](#) (1)
[Lead-Free Solder](#) (1)
[Desoldering Pump](#) (1)

⚙️ PARTS:

[Stickbox](#) (1)

Step 1 — Stickbox



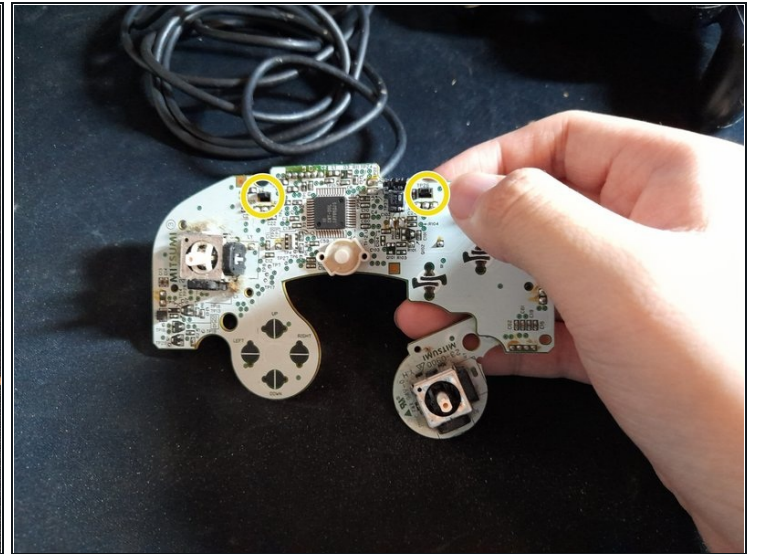
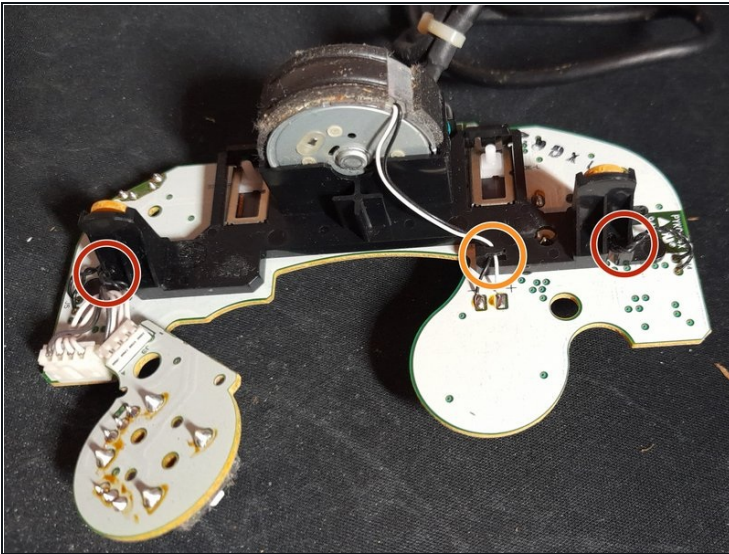
- Using the Tri-Wing, remove the six 9.2mm Tri-wing Y0 screws at the back of the controller

Step 2



- Remove the backplate with the motherboard and take out the motherboard.
- ① Removing it this way will make it easier to reassemble later on.

Step 3

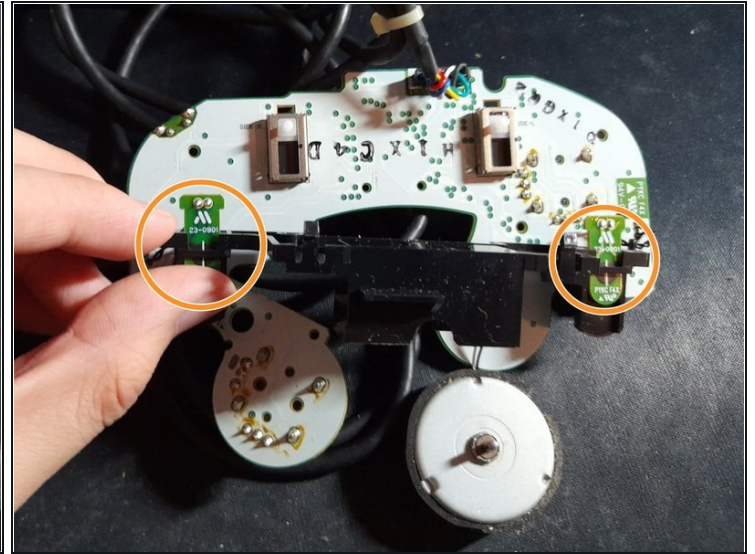
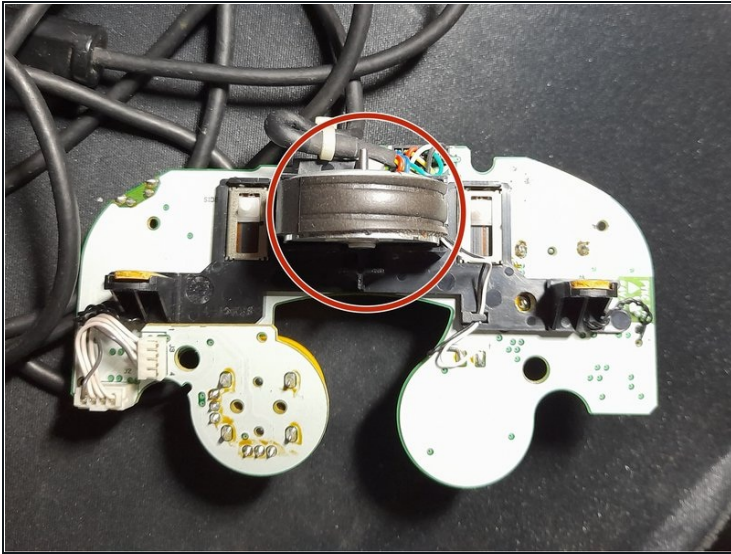


- Unhook the two trigger wires on the black plastic piece.
- Unhook the rumble motor wire.

⚠ **Be careful** with the motor wires, they are fragile.

- Turn the motherboard around and push the two black pins down to unlock the plastic piece.

Step 4

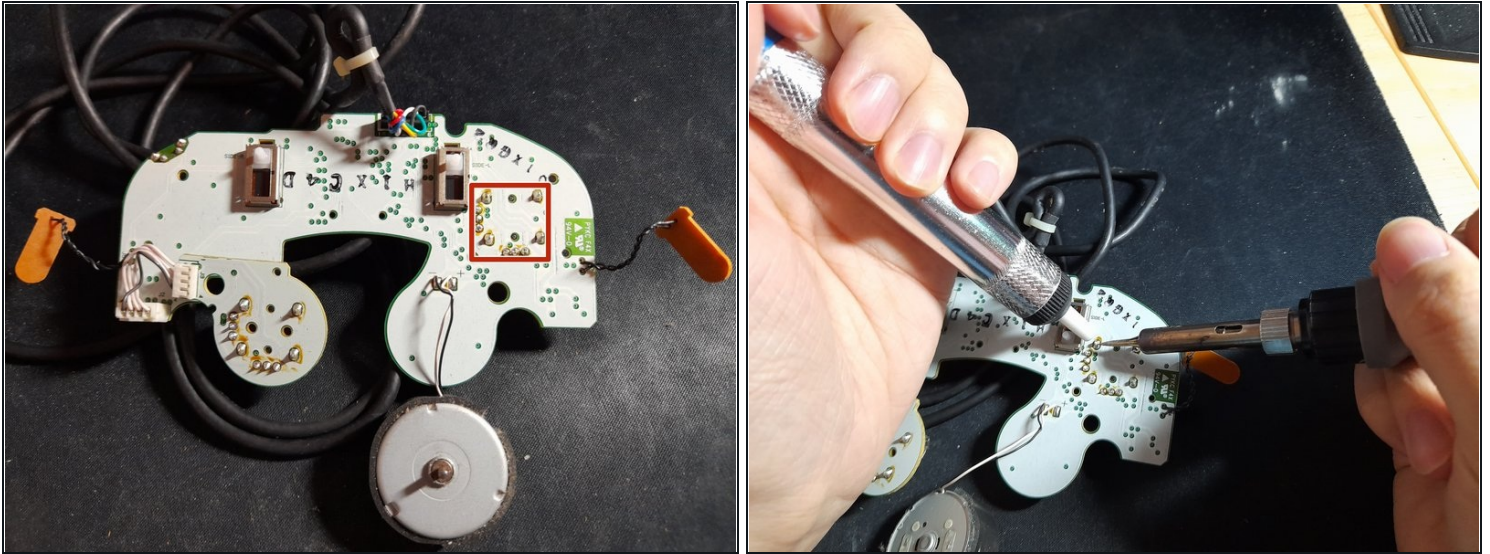


- Take out the rumble motor from the black piece.

⚠ **Be careful** with the rumble wires, they are fragile.

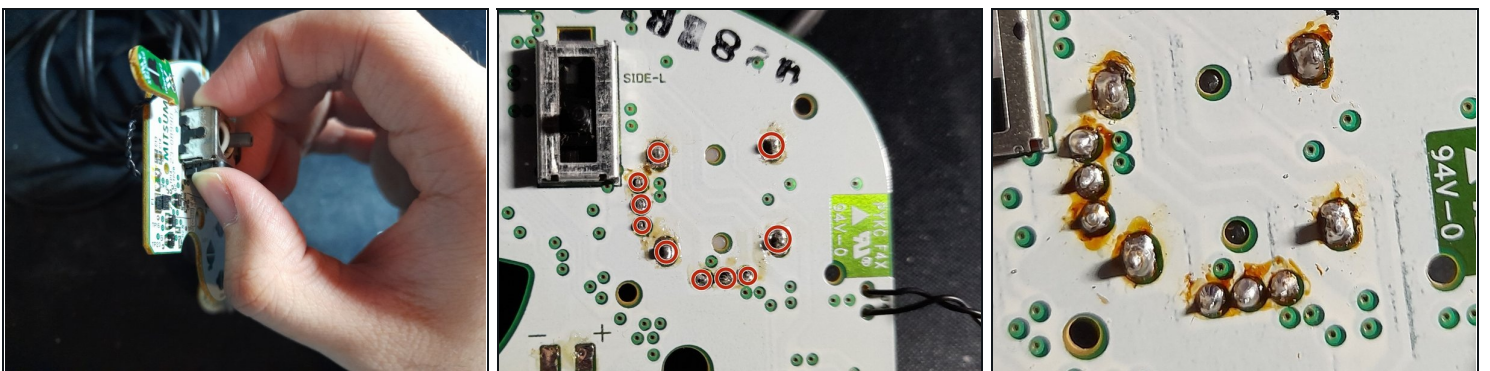
- Slide the two triggers forward and the black piece is now removable.

Step 5



- Set your soldering iron to around 420c.
- Using your soldering iron and [desoldering pump](#), remove the 10 pins and take out the stick box.
- ① There might be some solder left making it hard to pull out. Use of a flat hard object to help push the pins out might be necessary.

Step 6



- Line up and insert the new stick box.
 - Resolder the 10 pins.
- ⚠ Make sure there is no connection between the pins

GameCube controllers are still actively used in competitive Smash Bros and as well as retro gaming. They are usually hard to purchase brand new as supplies run out fast or must be bought used from third-party resellers. The stick can be swapped with each other on a controller or with even a Wii Nunchuck.