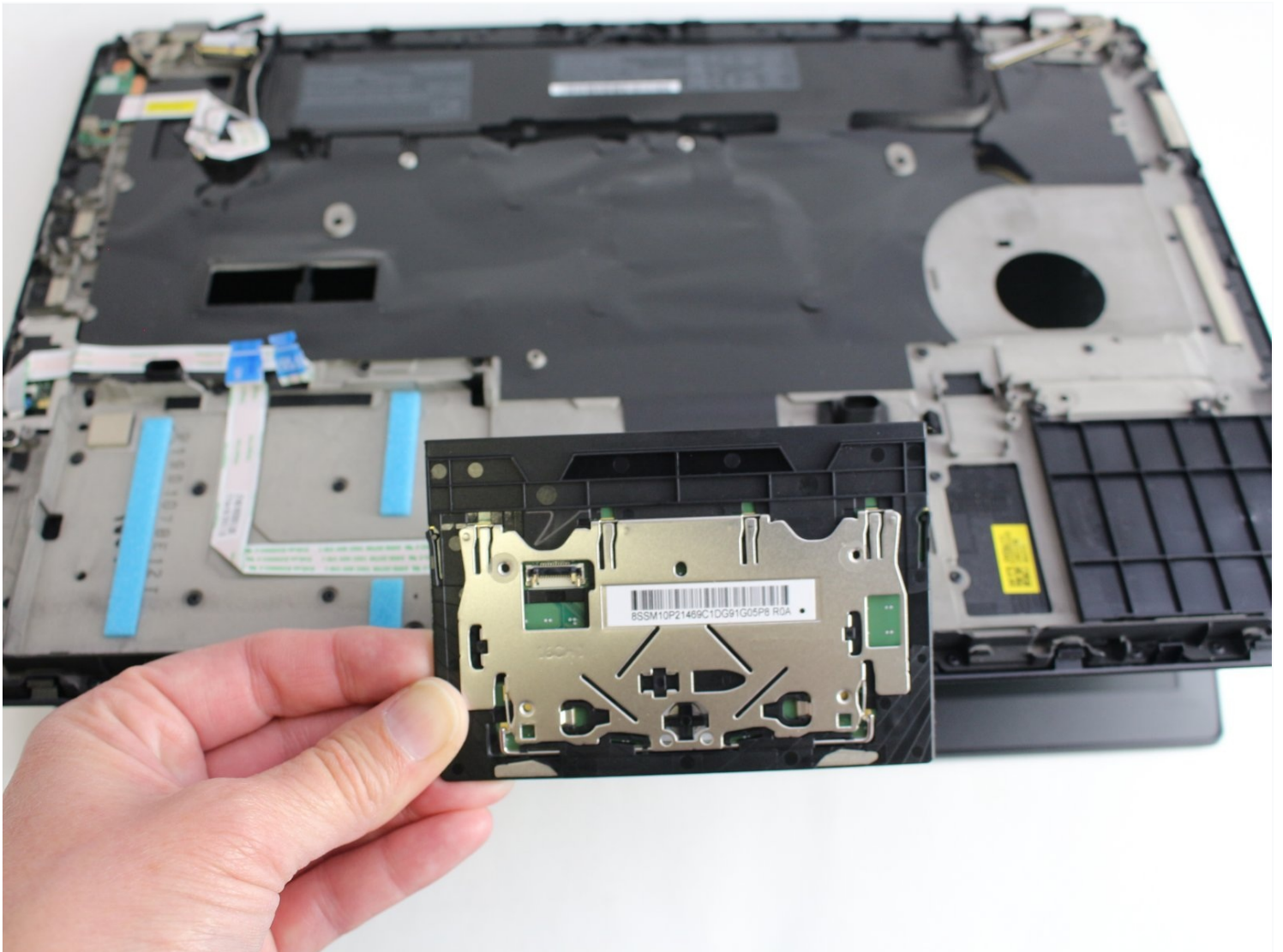




Lenovo ThinkPad T480 Trackpad Replacement

The trackpad or touchpad works as the mouse on...

Written By: Sarah Westberg



INTRODUCTION

The trackpad or touchpad works as the mouse on your laptop device. You use your fingers to move the cursor and to select items on the screen. If the trackpad of your Lenovo ThinkPad T480 needs to be replaced, this guide will walk you through the steps.

Generally, trackpads are pretty durable. If you are having problems with your trackpad, first check to make sure that it is enabled as well as its other settings. If they are okay, you may need a new driver. If none of these things fix your issue it may be time to replace your trackpad.

Prior to beginning your repair, [disable the internal battery](#), power off the laptop and finally unplug it from any external power source.



TOOLS:

iFixit Opening Tool (1)
Phillips #1 Screwdriver (1)
Spudger (1)
IC Extractor/Connector Puller (1)



PARTS:

Lenovo ThinkPad P51s, P52S, T470, T480, T570, T580, and TP25 Battery (1)

Step 1 — External Battery



 [Disable the battery](#), power down, and unplug your device before you begin.

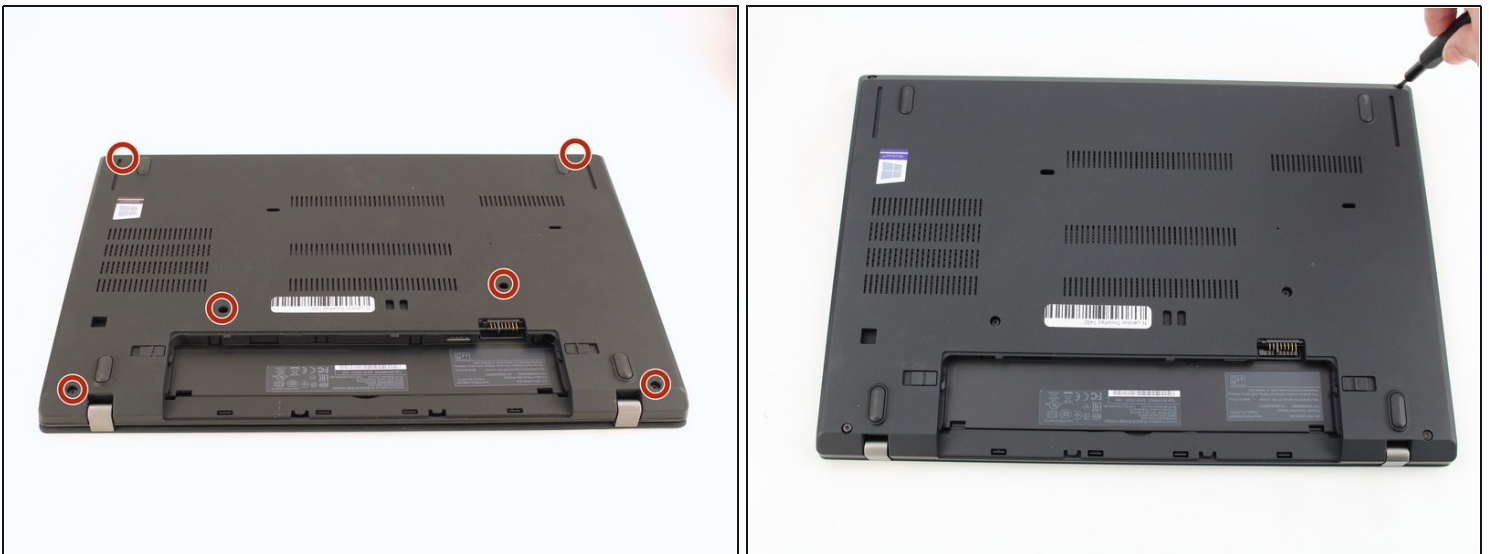
- Flip the laptop over so the bottom of the device is showing.

Step 2



- Using your fingers, slide the lock on each side of the battery to the unlocked position.
- Remove the battery from the slot.

Step 3 — Back Cover



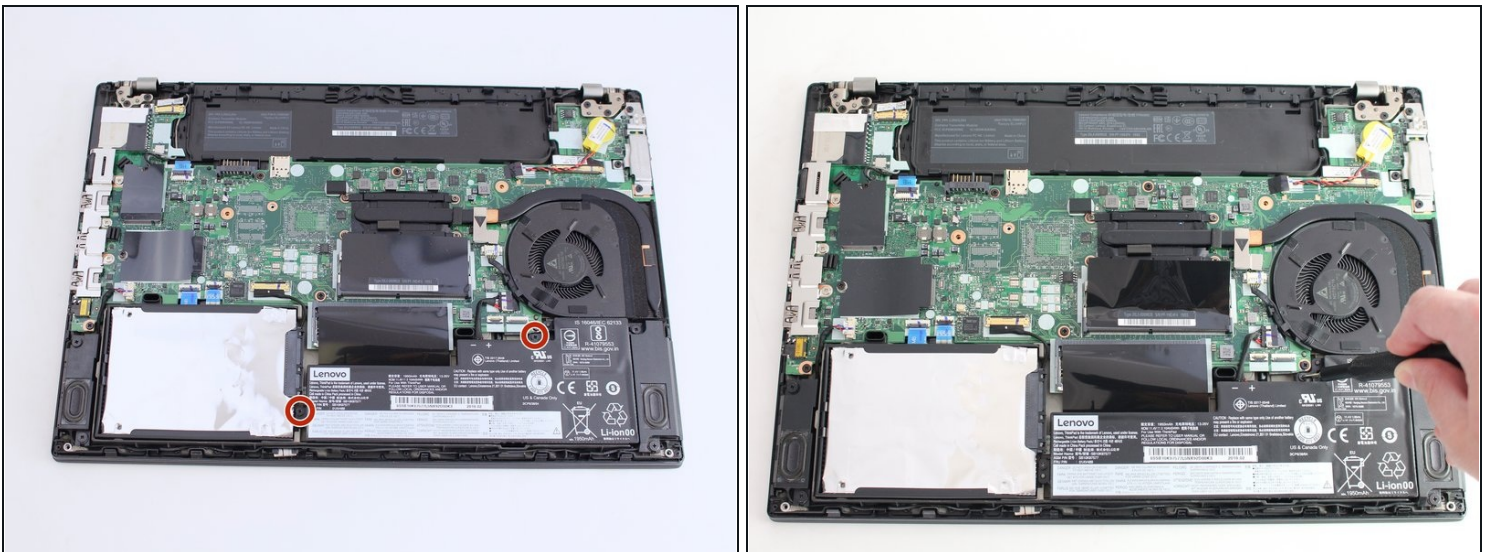
- Using the Phillips #1 screwdriver, loosen the six captive screws.

Step 4



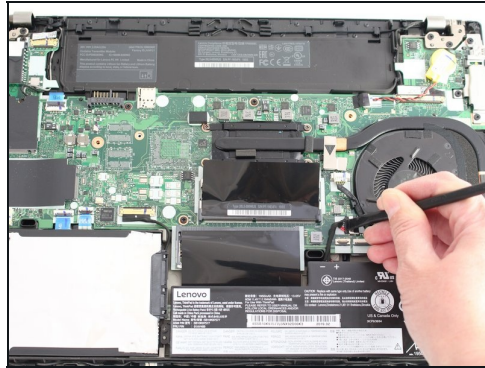
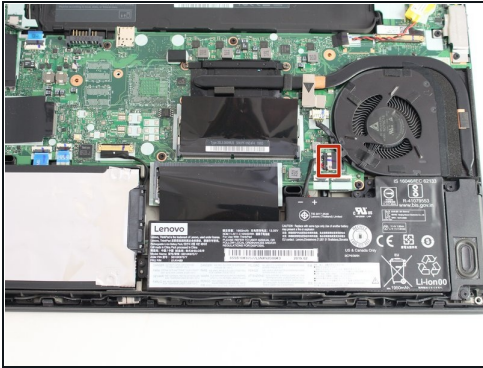
- Insert the blue plastic opening tool into the space between the lower case and the chassis.
- Slide the opening tool around the perimeter of the case to release the clips holding the case and the chassis together.
- ⓘ If it feels like the battery well portion of the back cover isn't loose, these clips may be holding the cover to the laptop. Use your opening tool to pry the clips loose and try removing the cover again.
- Remove the back case.

Step 5 — Internal Battery



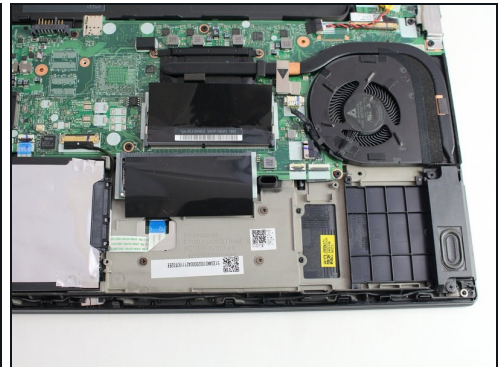
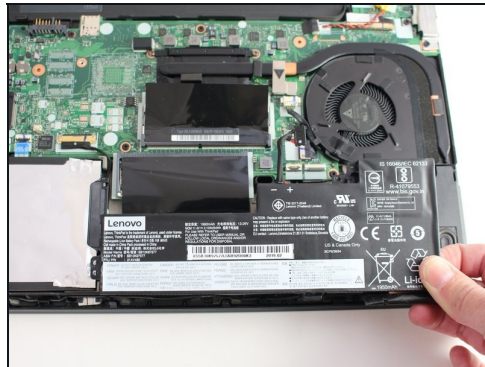
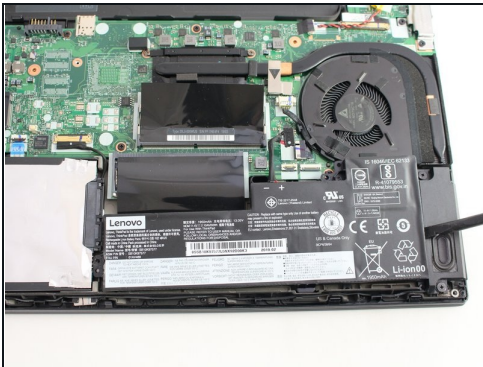
- Using the Phillips #1 screwdriver, remove the two 4.6 mm screws securing the internal battery to the frame.

Step 6



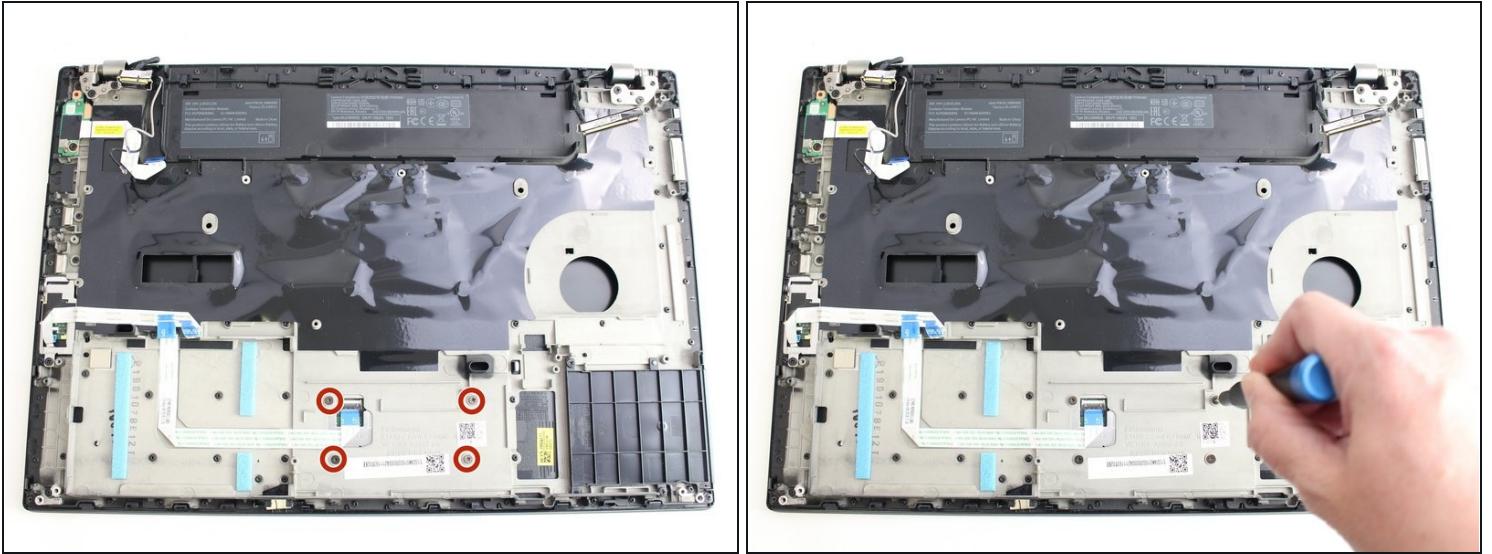
- Use the spudger to slide the battery socket connector parallel to the motherboard and out of its socket on the motherboard.

Step 7



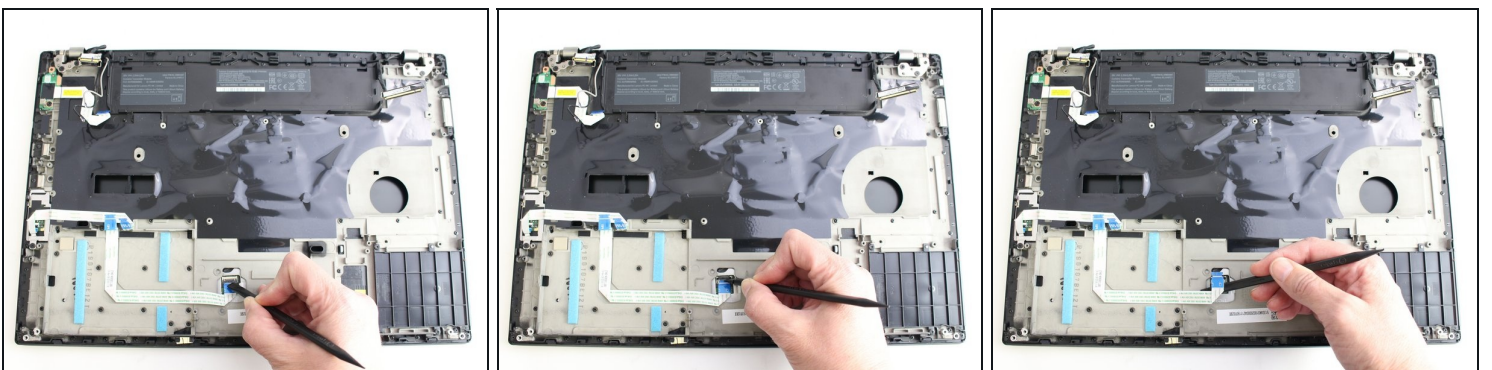
- Using the black nylon spudger, wedge the battery up from the case and lift it out.

Step 8 — Trackpad



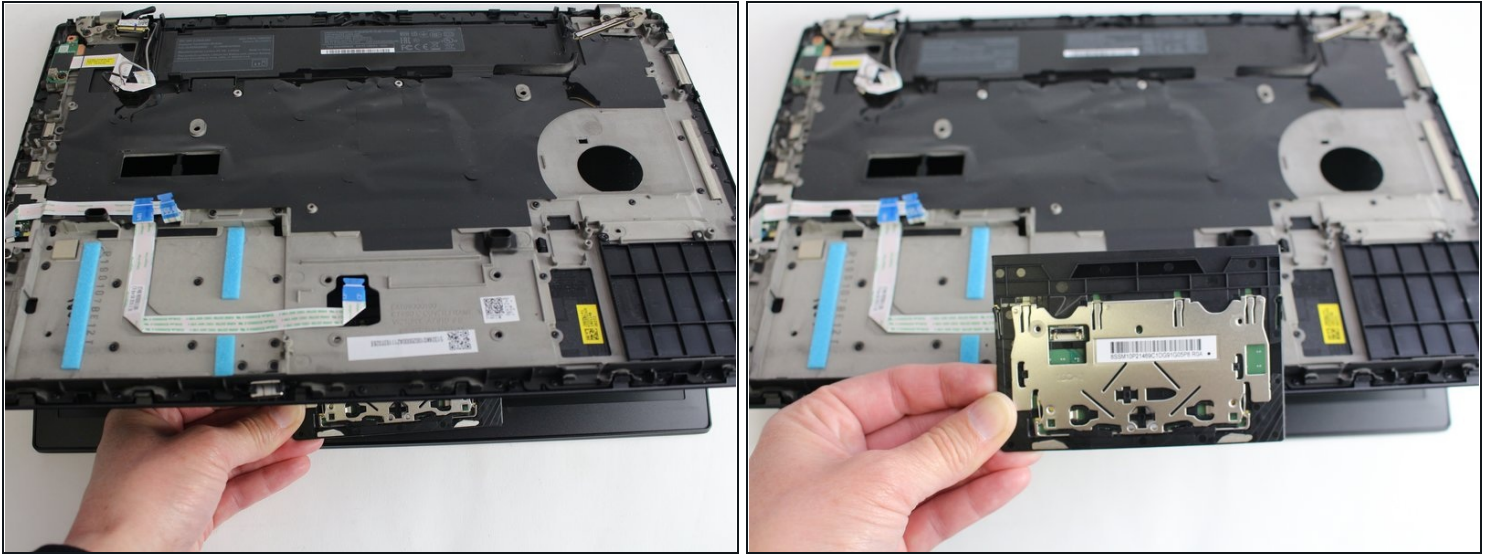
- Using the Phillips #1 screwdriver remove the four 3.1 mm screws from the chassis.
- ① In this guide additional components have been removed. Your laptop internals will look slightly different than the images in Steps 8-10 because of this.

Step 9



- Using the black nylon spudger, remove the ribbon cable connected to the trackpad.

Step 10



- Lift the chassis up and the trackpad will fall out.

To reassemble your device, follow the above steps in reverse order.

Take your e-waste to an [R2 or e-Stewards certified recycler](#).

Repair didn't go as planned? Try some [basic troubleshooting](#), or ask our Answers community for help.