



# AUX-208P1 Electric Kettle Temperature Controller Replacement

A repair guide on how to replace the temperature controller of the AUX-208P1 electric kettle. Ensure the normal operation of the electric kettle.

Written By: SHAN HUANG



---

## INTRODUCTION

Looking to replace your damaged temperature controller and don't know how? In this installation guide, we will teach you how to replace a new temperature controller. You can easily do it in just a few steps. This installation is based on the AUX-208P1 electric kettle, but the same concept is also applicable to the replacement of other electric kettle temperature controllers.



### TOOLS:

- [Phillips #0 Screwdriver](#) (1)
  - [Combination plier](#) (1)
-

## Step 1 — Temperature Controller



- Clean all the dirt on the bottom of the electric kettle.

## Step 2



- Use a Phillips #0 screwdriver to remove the three 19 mm screws at the bottom of the electric kettle.
- Remove the base of the electric kettle.
- Remove the LED indicator buckled on the base.

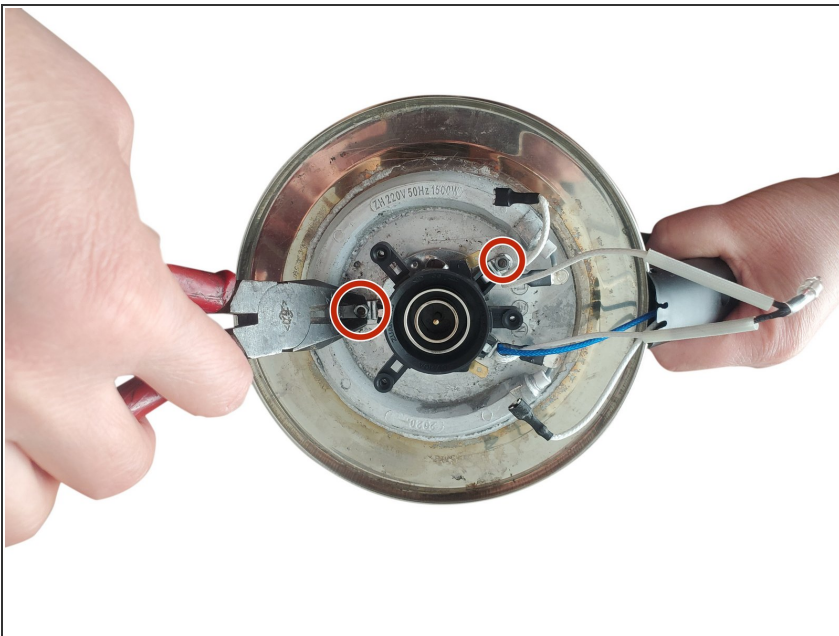
## Step 3



- Use combination pliers to clamp the connection between the electric kettle line and the old temperature controller to create a gap, and pull it off.

⚠ Don't use too much force to avoid damage to the line !

## Step 4



- Use combination pliers to remove the nuts holding down the old temperature controller.

## Step 5



- Remove the broken temperature controller.
- Clean the bottom of the kettle to remove any dust or debris buildup.

## Step 6



- Align the socket on the bottom of the new temperature controller with the protrusion on the bottom of the electric kettle to assemble.



## Step 7



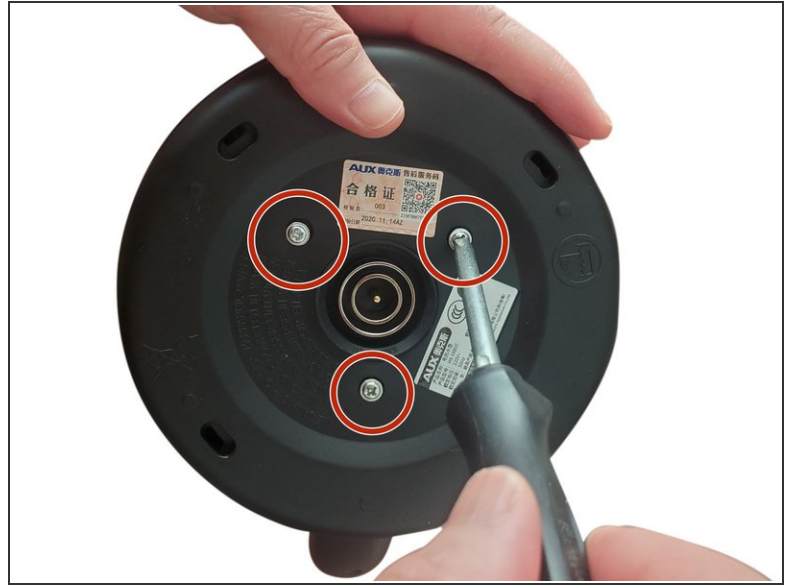
- Use combination pliers to reinstall the nuts holding down the temperature controller.

## Step 8



- Fasten the electric kettle circuit to the contact reed of the new temperature controller.
- ★ Gently pull the interface to ensure a firm installation.

## Step 9



- Re-buckle the removed LED indicator back to the base.
- Buckle the base back to the bottom of the electric kettle.
- Use a Phillips #0 screwdriver to three 19 mm screws on the bottom of the kettle.

重新组装设备时，请依次相反的拆卸顺序。