



Creative Zen Vision W LCD Screen Replacement

This guide will show you how to remove and...

Written By: Tim Wilson



INTRODUCTION

This guide will show you how to remove and install a new LCD screen in your device. Use this guide if your screen is broken or damaged and needs to be replaced.

TOOLS:

[Spudger](#) (1)

[iFixit Opening Tool](#) (1)

[Phillips #0 Screwdriver](#) (1)

Step 1 — Front Cover



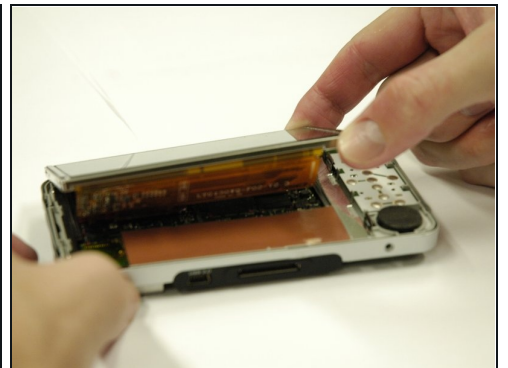
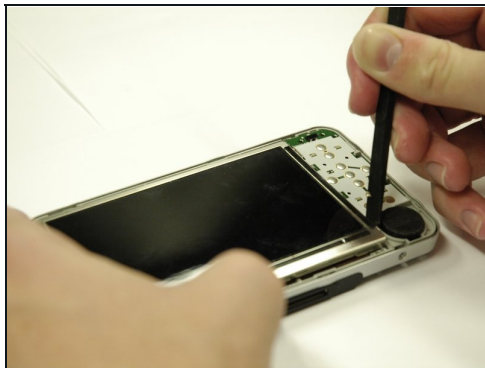
- Remove the two screws (2.5 mm) on the top and bottom of the device using a Phillips #0 screwdriver.

Step 2



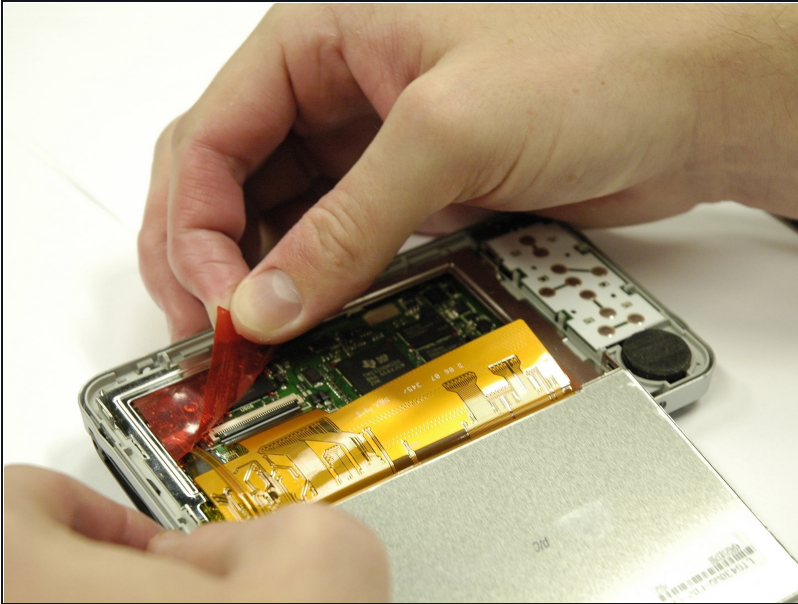
- Run the spudger along the cover and pry.
- ⓘ Do this gently to preserve the screen
- The button pad may fall off when the cover is removed.

Step 3 — LCD Screen



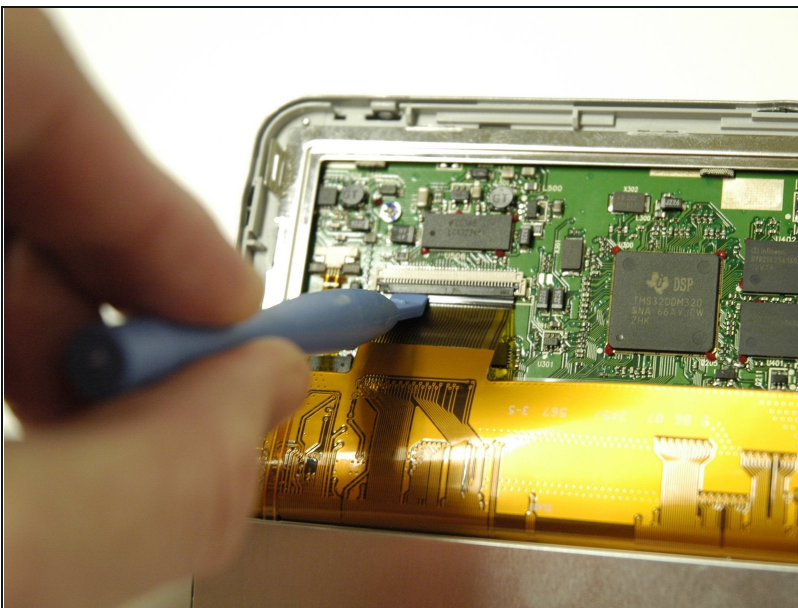
- Use a spudger to separate the metal tabs that hold the screen in place on the right side.
- ⚠ The screen is still attached underneath with two ribbon cables. Lift it very carefully.

Step 4



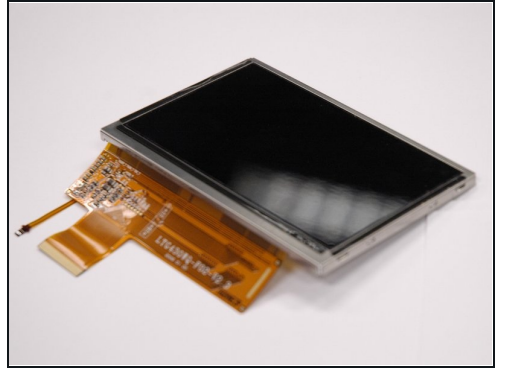
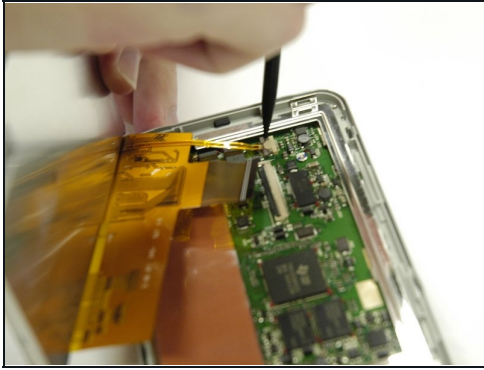
- Put the screen face down so you can see where the ribbon cables are attached.
- Remove the red sticker that covers the ribbon cable connections.

Step 5



- Use a plastic opening tool to get underneath the black flap on the larger ribbon cable connection and lift it.

Step 6



- Use a spudger to slide the two small gray tabs away from the ribbon cable connection.
- Remove the screen from the device.

To reassemble your device, follow these instructions in reverse order.