



Creative Zen Vision W Keypad Replacement

This step-by-step guide will show you how to...

Written By: Tim Wilson



INTRODUCTION

This step-by-step guide will show you how to remove a broken keypad and install a new one on your device when the buttons stop working. This guide is for you if you are looking to fix the keyboard to your Creative Zen Vision device.

The buttons are used to turn the device on and off, as well as allowing you to switch shows and use controls. When the buttons do not work, the device will not function properly.

Before beginning, make sure to unplug your device from any external power sources to ensure safety.

TOOLS:

[Spudger](#) (1)

[1.5 mm Flathead Screwdriver](#) (1)

[Tweezers](#) (1)

[iFixit Opening Tool](#) (1)

[Phillips #0 Screwdriver](#) (1)

Step 1 — Front Cover



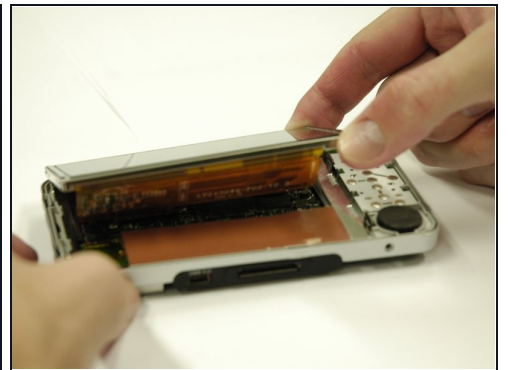
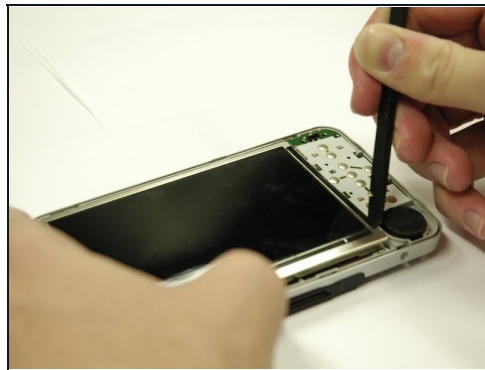
- Remove the two screws (2.5 mm) on the top and bottom of the device using a Phillips #0 screwdriver.

Step 2



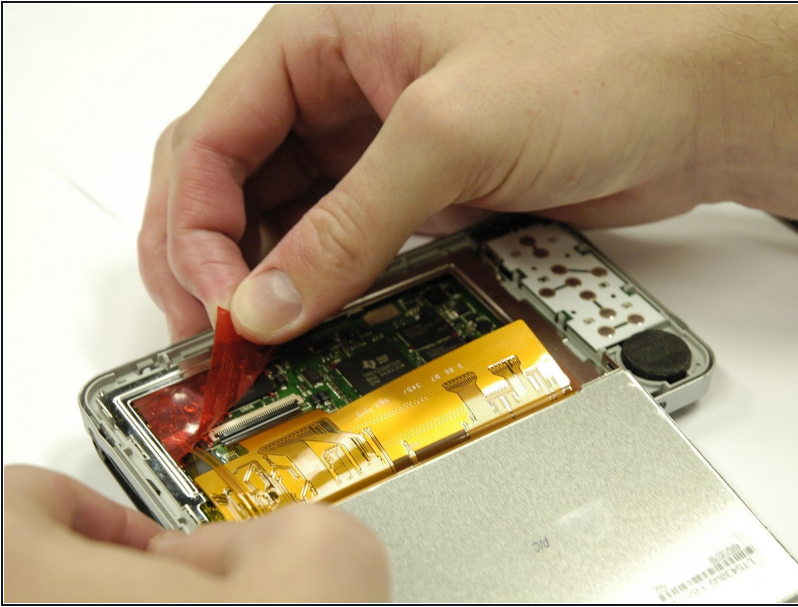
- Run the spudger along the cover and pry.
- ⓘ Do this gently to preserve the screen
- The button pad may fall off when the cover is removed.

Step 3 — LCD Screen



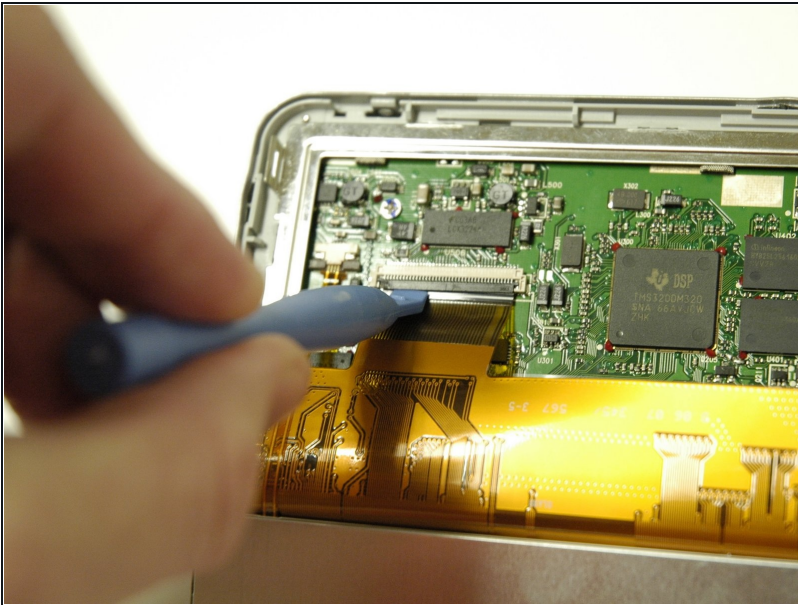
- Use a spudger to separate the metal tabs that hold the screen in place on the right side.
- ⚠ The screen is still attached underneath with two ribbon cables. Lift it very carefully.

Step 4



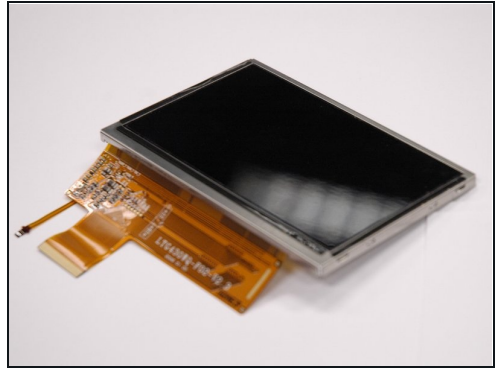
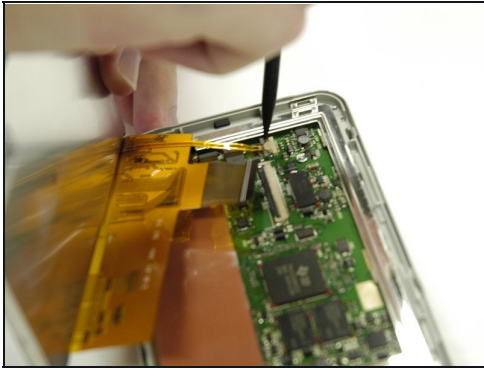
- Put the screen face down so you can see where the ribbon cables are attached.
- Remove the red sticker that covers the ribbon cable connections.

Step 5



- Use a plastic opening tool to get underneath the black flap on the larger ribbon cable connection and lift it.

Step 6



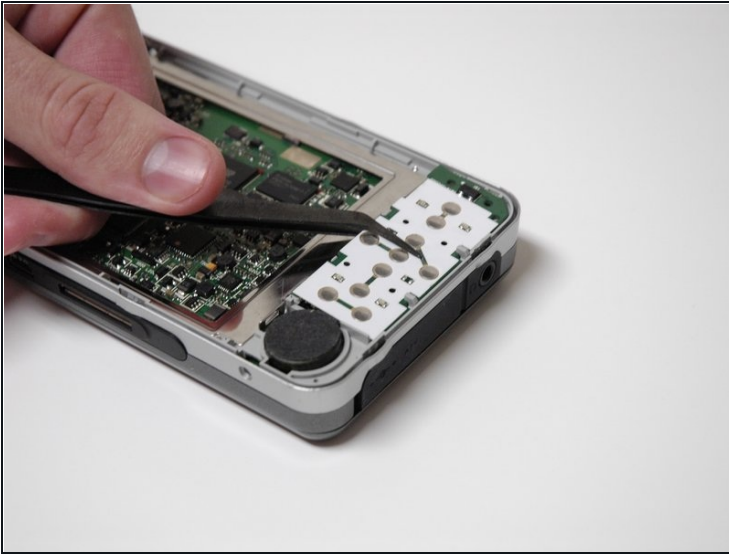
- Use a spudger to slide the two small gray tabs away from the ribbon cable connection.
- Remove the screen from the device.

Step 7 — Keypad



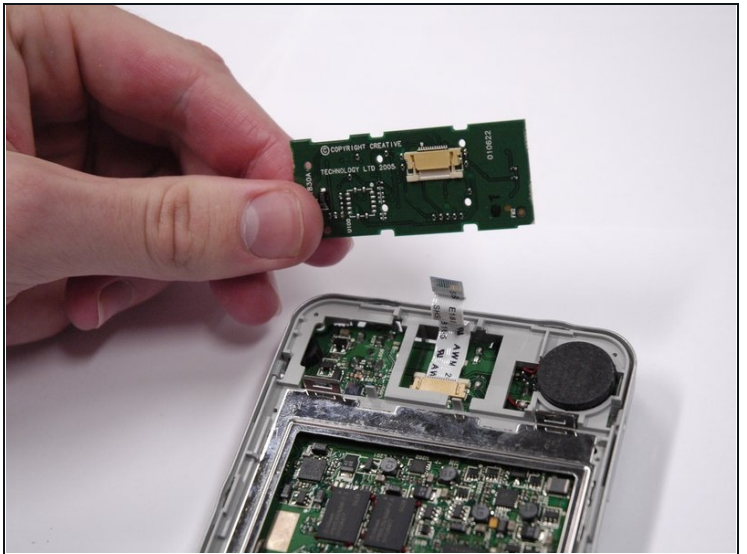
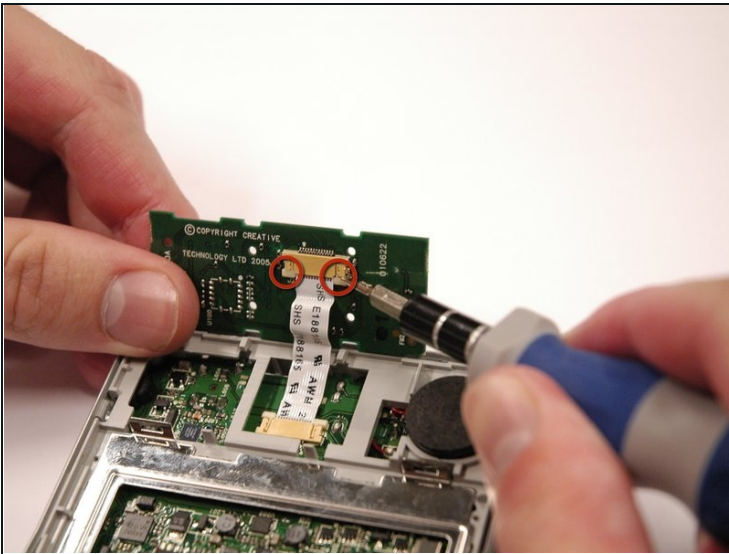
- Peel the orange sticker off of the motherboard.

Step 8



- Lift the keypad from the left side and use tweezers to slide it out to the left.

Step 9



- Use a small flat head screw driver to slide the white tabs away from the ribbon cable connection.
- Remove the ribbon cable from the keypad.

To reassemble your device, follow these instructions in reverse order.

