



Huawei P8 Lite (2017) Battery Replacement

How to replace a worn-out or dead battery in your Huawei P8 Lite (2017).

Written By: Adriana Zwink



INTRODUCTION

Use this guide to replace a worn-out or dead battery in your Huawei P8 Lite (2017).

If your battery is swollen, [take appropriate precautions](#). For your safety, **discharge your battery below 25%** before disassembling your phone. This reduces the risk of a dangerous thermal event if the battery is accidentally damaged during the repair.

You'll need replacement adhesive to reattach components when reassembling the device.



TOOLS:

- [iOpener](#) (1)
- [Suction Handle](#) (1)
- [iFixit Opening Picks set of 6](#) (1)
- [Phillips #00 Screwdriver](#) (1)
- [Spudger](#) (1)



PARTS:

- [Huawei HB366481ECW Replacement Battery](#) (1)

Step 1 — Apply a heated iOpener



- [Heat an iOpener](#) and apply it to the rear glass for two minutes.
- ⓘ A hair dryer, heat gun, or hot plate may also be used, but be careful not to overheat the P8 Lite —the display and internal battery are both susceptible to heat damage.

Step 2 — Create a gap



- Apply a suction cup to the rear glass, as close to the right edge as possible.
 - ⓘ If the phone's rear glass is cracked, the suction handle may not stick. Try [lifting it with strong tape](#), or superglue the suction handle in place and allow it to cure so you can proceed.
- Pull up on the suction up with strong, steady force to create a gap.
 - ⓘ Depending on the age of your device, this may be difficult. If you have trouble, apply more heat to further soften the adhesive and try again.
- Insert the tip of an opening pick into the gap between the rear glass and frame.

Step 3 — Slice the adhesive



- Slide the tip of the opening pick to the bottom right corner to cut the adhesive.
- Leave it there to prevent the adhesive from resealing.

Step 4



- Insert a second opening pick at the bottom right corner.
- Slide the tip of the opening pick to the top right corner to slice the adhesive.
- Leave the opening pick at its place to prevent the adhesive from resealing.

Step 5




- Insert a third opening pick at the top right corner.
- Slide it to the top left corner to cut the adhesive.
- ① In case you're having trouble to cut the adhesive, reapply the [iOpener](#) for another minute to loosen it.
- Leave the opening pick at its place to prevent the adhesive from resealing.

Step 6



- Insert a fourth opening pick at the top left corner.

 Do not insert the opening pick deeper than 1 cm (1/3rd of an inch) to avoid damage the fingerprint sensor cable.

- Slide the tip of the opening pick to the bottom left corner to cut the adhesive.
- Leave the opening pick in its place to prevent the adhesive from resealing.

Step 7



- Insert a fifth opening pick at the bottom left corner.
- Slide it to the bottom right corner to cut the remaining adhesive.

⚠ Try not to remove the rear glass yet! The fingerprint sensor is still connected to the motherboard.

Step 8 — Rotate the rear glass



- Open the P8 Lite by swinging the rear glass up from the left side, like the back cover of a book.
- Place the rear glass on the top of the battery.

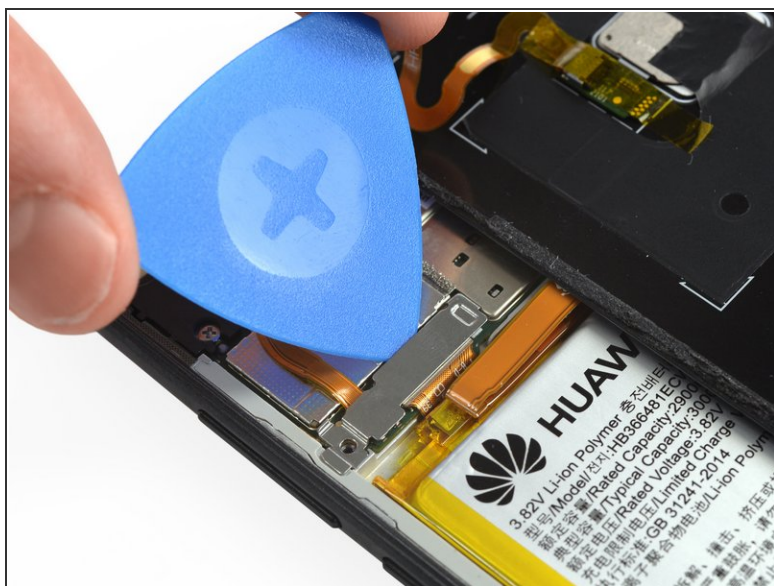
⚠ Avoid tensioning the display cable during this procedure.

Step 9 — Unscrew the fingerprint sensor connector cover



- Use a Phillips #00 screwdriver to remove the 2.9 mm screw.

Step 10 — Remove the metal shield



- Use the tip of an opening pick to pry up and loosen the metal shield.

Step 11 — Remove the metal shield



- Use a pair of tweezers to remove the metal shield.

Step 12



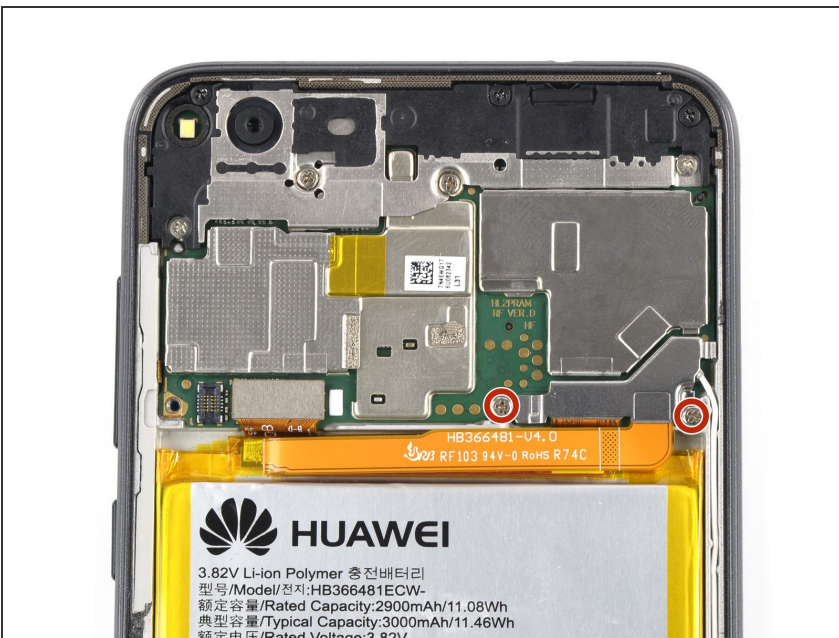
- Use a spudger to pry up and disconnect the fingerprint sensor cable.

Step 13



- Remove the rear glass.
- ★ After installing the rear glass, apply strong, steady pressure to your phone for several minutes to help the adhesive form a good bond—a stack of heavy books works well.

Step 14 — Battery



- Use a Phillips #00 screwdriver to remove the two 2.9 mm-long screws securing the battery connector shield.

Step 15 — Remove the metal shield



- Use the tip of an opening pick to pry up the battery connector shield.
- Remove the metal shield.

Step 16 — Disconnect the battery



- Use a spudger to pry up and disconnect the battery flex cable.


Step 17 — Apply a heated iOpener



- [Heat an iOpener](#) and apply it to the display to loosen the adhesive beneath the battery for two minutes.
- ⓘ A hair dryer, heat gun, or hot plate may also be used, but be careful not to overheat the P8 Lite—the display and internal battery are both susceptible to heat damage.

Step 18 — Insert an opening pick



 The interconnect cable runs under the battery on the bottom right side. Make sure not to damage the cable during the following procedure.

- Insert the wide edge of an opening pick on the bottom left corner into the gap between the battery and the frame.
- Slide the opening pick at a flat angle as far under the battery as possible. Be careful not to deform the battery.

Step 19



- Once the battery has slightly lifted, insert a second opening pick at the bottom left corner.
- Slide the opening pick along the edge to the left center and slide it under the battery.
- ⓘ In case you're having trouble to cut the adhesive, reapply the [iOpener](#) for another minute to loosen it.
- Insert a third opening in the center of the right edge and slide it under the battery to cut the remaining adhesive.
- ⚠ Make sure not to damage the interconnect cable that runs on the right side underneath the battery.

Step 20



- Remove the battery.
- ⚠ Do not reinstall a damaged or deformed battery, as doing so is a potential safety hazard.
- ✦ Before installing a new battery, remove any remaining adhesive from the phone, and clean the glued areas with isopropyl alcohol and a lint-free cloth.
- ✦ Secure the new battery with pre-cut adhesive or double-sided adhesive tape. In order to position it correctly, apply the new adhesive into the device at the places where the old adhesive was located, not directly onto the battery. Press the new battery firmly into place.

If possible, turn on your device and test your repair before installing new adhesive and resealing.

To reassemble your device, follow these instructions in reverse order. Apply new adhesive where necessary after cleaning the relevant areas with isopropyl alcohol (>90%).

For optimal performance, **calibrate your newly installed battery**: Charge it to 100% and keep charging it for at least 2 more hours. Then use your device until it shuts off due to low battery. Finally, charge it uninterrupted to 100%.

Take your e-waste to an [R2 or e-Stewards certified recycler](#).

Repair didn't go as planned? Try some [basic troubleshooting](#), or ask our [Answers community](#) for help.