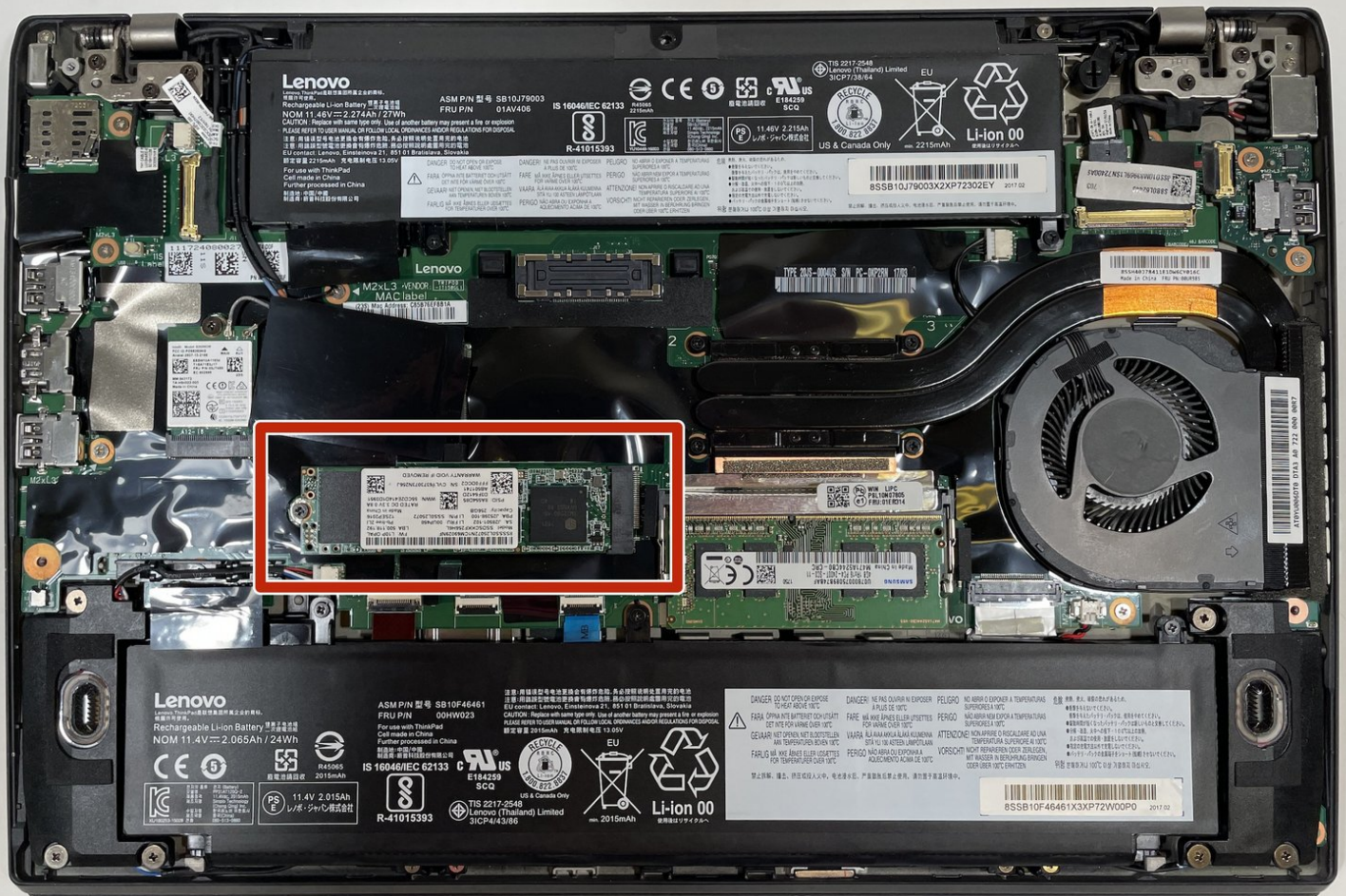




Lenovo ThinkPad T470S SSD Replacement

The SSD in the Lenovo ThinkPad T470S may need...

Written By: Noah Stuart



INTRODUCTION

The SSD in the Lenovo ThinkPad T470S may need to be replaced if your computer is not booting properly or not booting at all. In many of these cases, the SSD is most likely faulty. In some cases, the SSD might just be loose and needs to be reconnected. Once you have a good SSD with a good connection, your laptop should boot properly.



TOOLS:

- [Phillips #000 Screwdriver](#) (1)



PARTS:

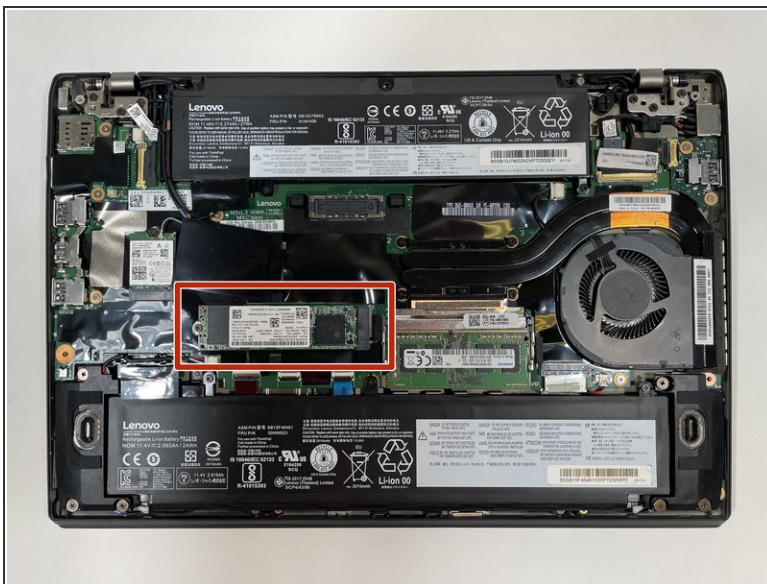
- [Crucial P3 NVMe PCIe M.2 2280SS SSD - solid performance, switching from HDD or SATA to NVMe™](#) (1)
- [Crucial P3 Plus NVMe PCIe M.2 2280SS SSD - fast Gen4 NVMe™ storage for data-intensive applications](#) (1)
- [Crucial P5 Plus NVMe PCIe M.2 2280SS SSD - professionals, creatives, and hardcore gamers](#) (1)

Step 1 — Bottom Panel



- Use a Phillips #000 screwdriver to remove the five 7 mm screws from the bottom of the laptop.
- Lift the bottom panel up and off the laptop.

Step 2 — SSD



- Locate the SSD slot between the large battery and fan.
- Remove the screw securing the SSD using a Phillips #000 screwdriver.

Step 3



- Slide the SSD out of the motherboard.

To reassemble your device, follow these instructions in reverse order.