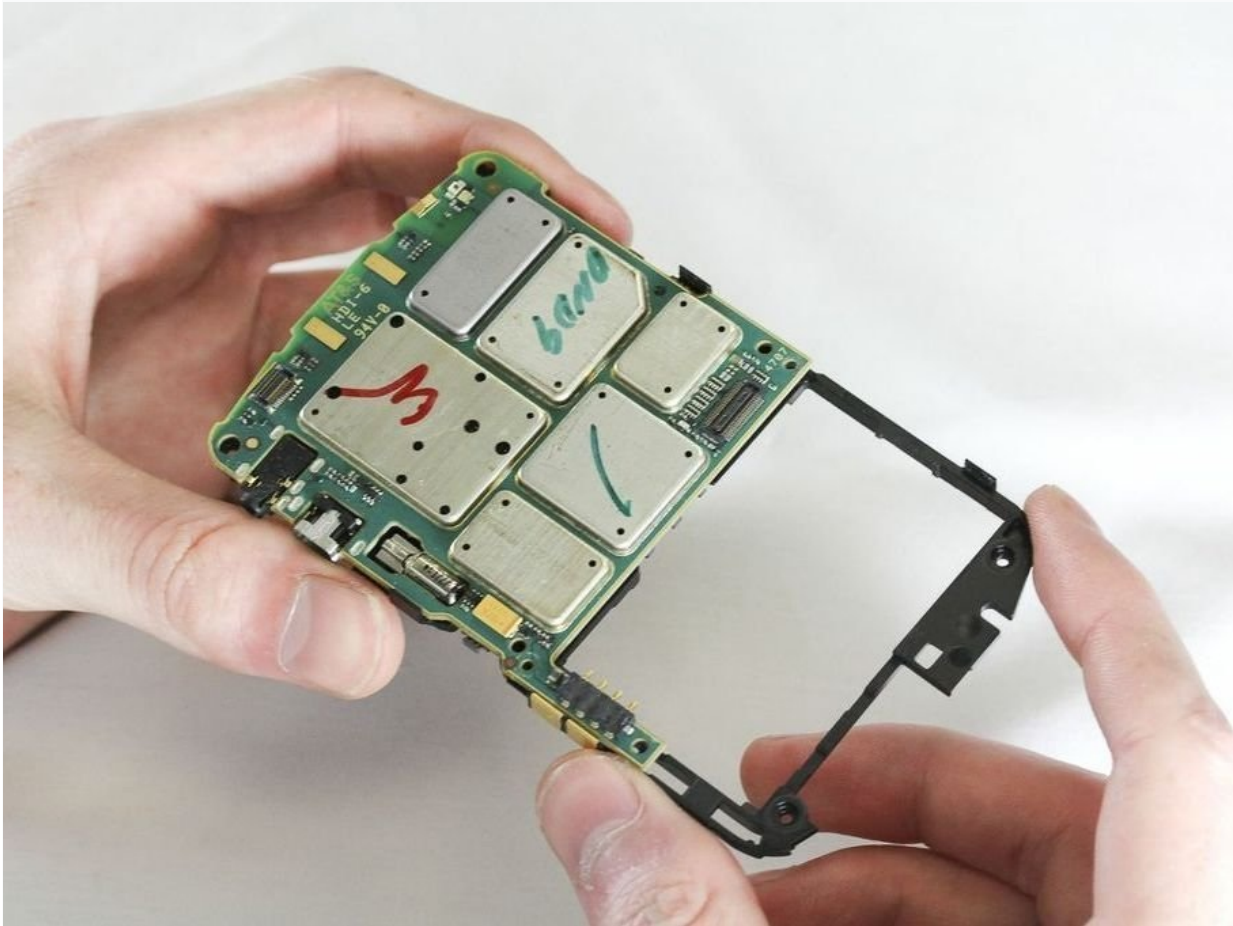




BlackBerry 8820 Motherboard Replacement

Replace your faulty motherboard with a new one.

Written By: ryan



INTRODUCTION

Replace your faulty motherboard with a new one.

TOOLS:

[Spudger](#) (1)

[64 Bit Driver Kit](#) (1)

[iFixit Opening Tool](#) (1)

Step 1 — Disassembling BlackBerry 8820 Outer Casing



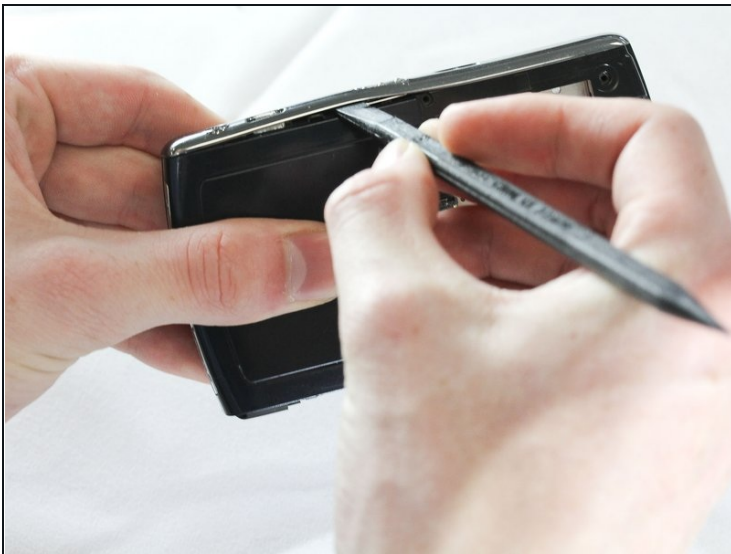
- Remove the battery cover by applying pressure and sliding down the silver square on the back of the phone.

Step 2



- Remove the battery by prying under it with your finger or the plastic opening tool.
- Remove the four small 3/8" long screws using a 1/16" diameter torx screwdriver.

Step 3



- Use a nylon spudger to carefully remove the two side bars of plastic.

Step 4



- Use a nylon spudger to carefully pry the back casing off.
- ① There are two small clamps on each edge that need to be unhooked before the casing will come off.

Step 5



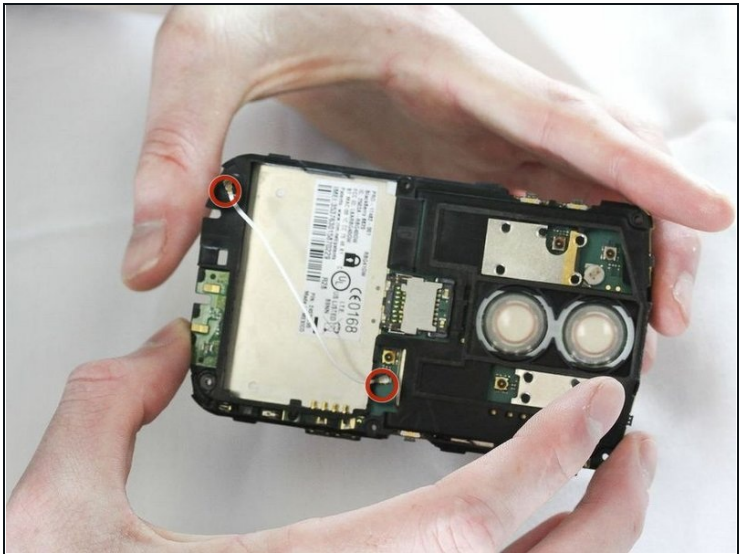
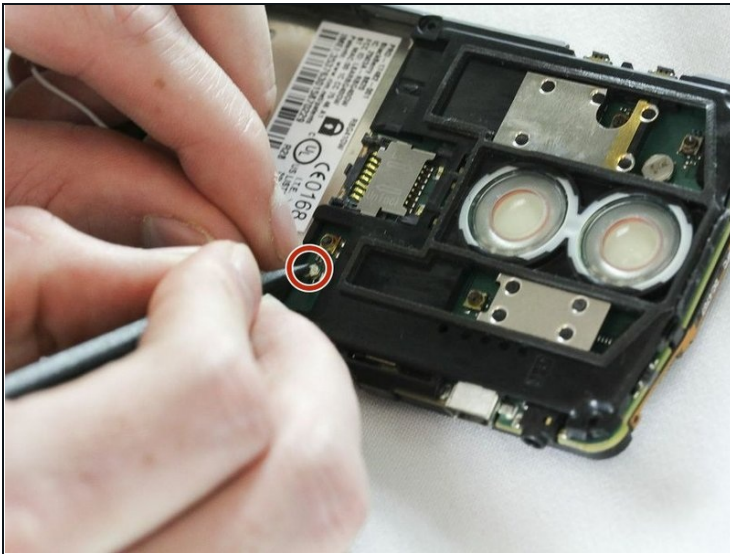
- Pry off the front casing.
- ⚠ Be aware of sensors and other sensitive areas of the newly exposed electronics.

Step 6 — Motherboard



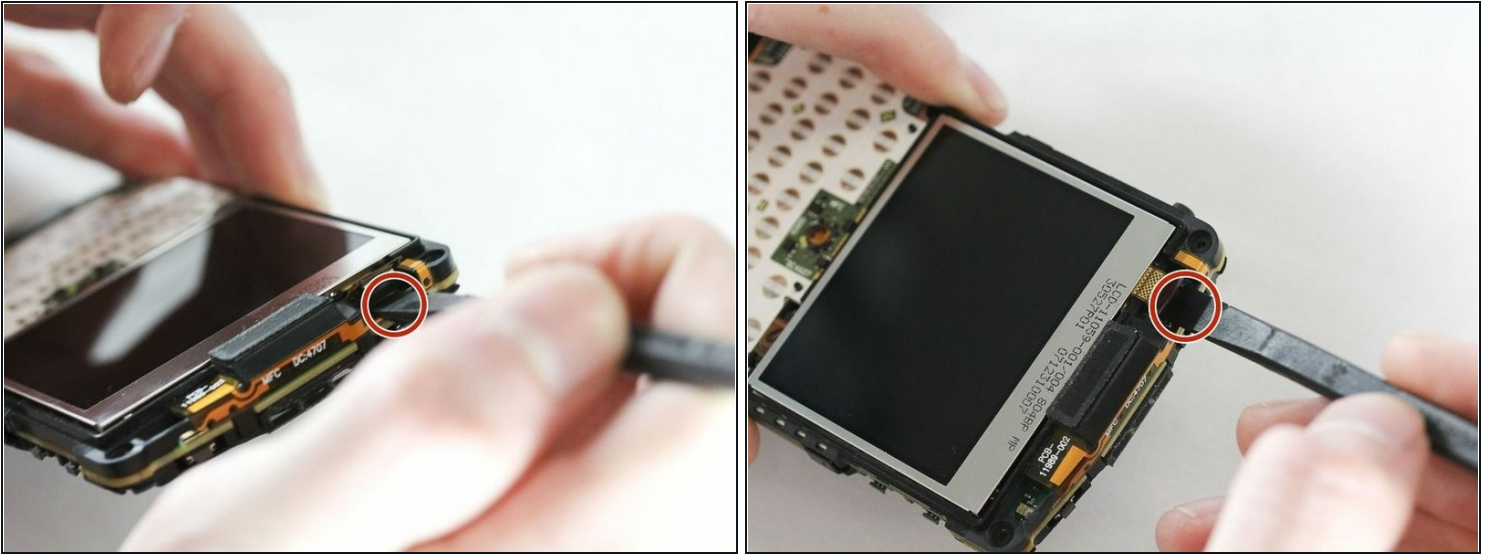
- Remove the bottom casing clip, it will easily unsnap when pulled

Step 7



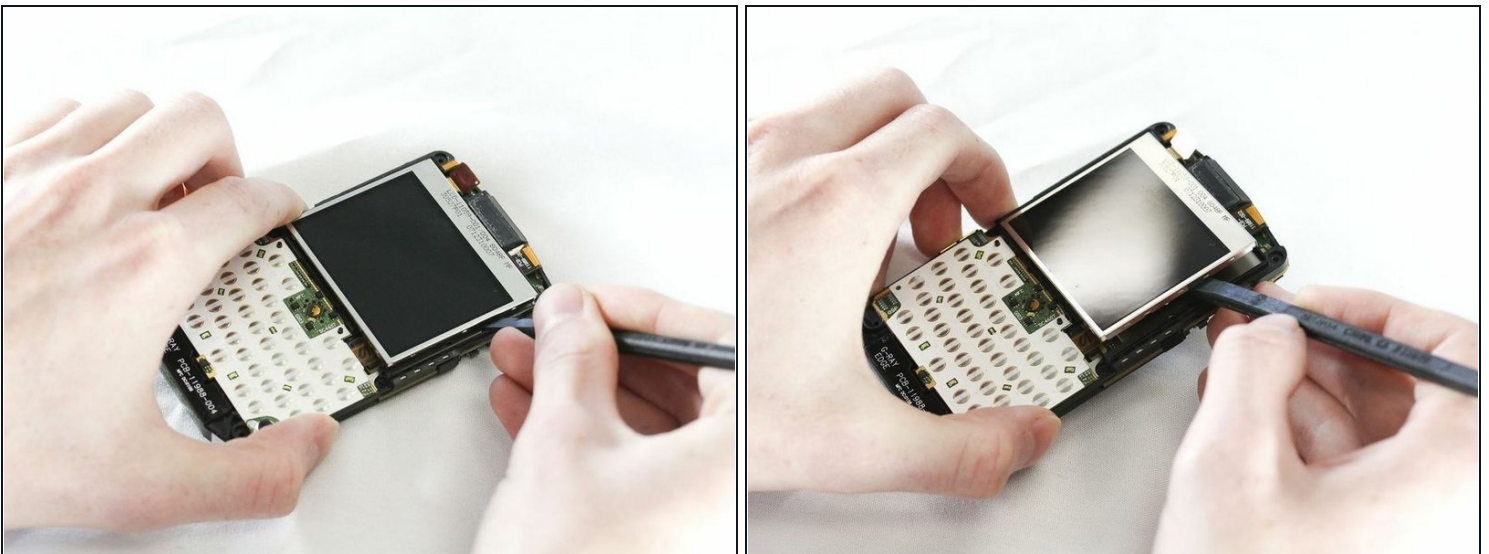
- Unhook both sides of the white wire from the motherboard using the plastic opening tool from before

Step 8



- At the top of the phone, locate the gloss SATA cable strap connecting the LCD screen to the phone.
- Using the prying tool, unattach this cable by levering under the connector
⚠ When removing the ribbon cable handle with care; it is prone to breaking

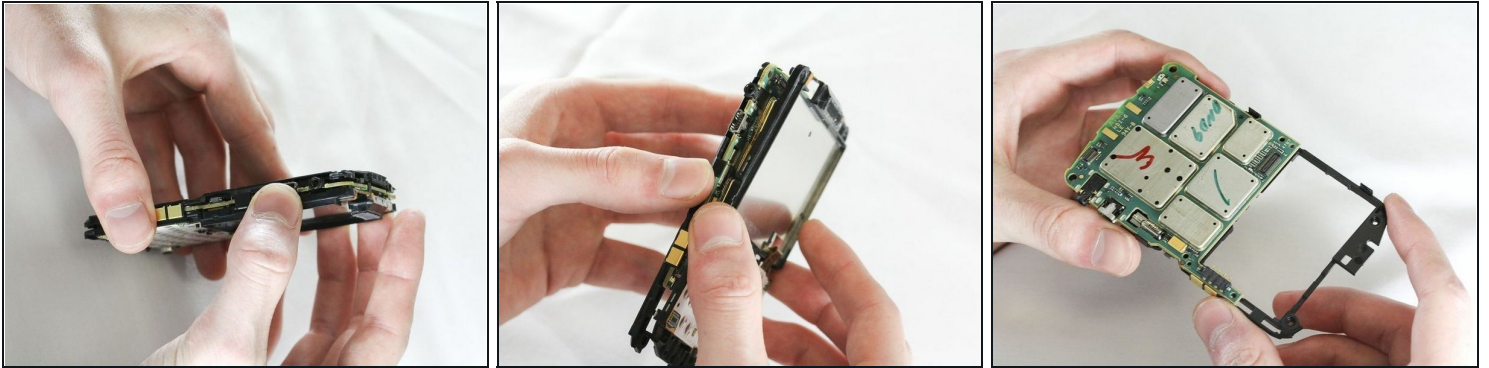
Step 9



⚠ WARNING: Be sure to have disconnected the SATA cable strap prior to attempting this.

- Using the prying tool, lever up the old screen as shown.

Step 10



- There will be two small clips on each side of the motherboard. Using the plastic opening tool unhook each clip one at a time
- Once all four clips are unhooked you should be able to pull the motherboard from the casing using your hands.
- After you remove the old motherboard, you can then replace it with a new one.

To reassemble your device, follow these instructions in reverse order.