



Lenovo Yoga 720-15IKB Motherboard Replacement

If your computer is showing the blue screen of...

Written By: Jacob Proctor



INTRODUCTION

If your computer is showing the blue screen of death (BSoD) or is not functioning properly, it may be time to replace the motherboard. Follow these instructions to replace the motherboard in the Lenovo Yoga 720-15IKB.

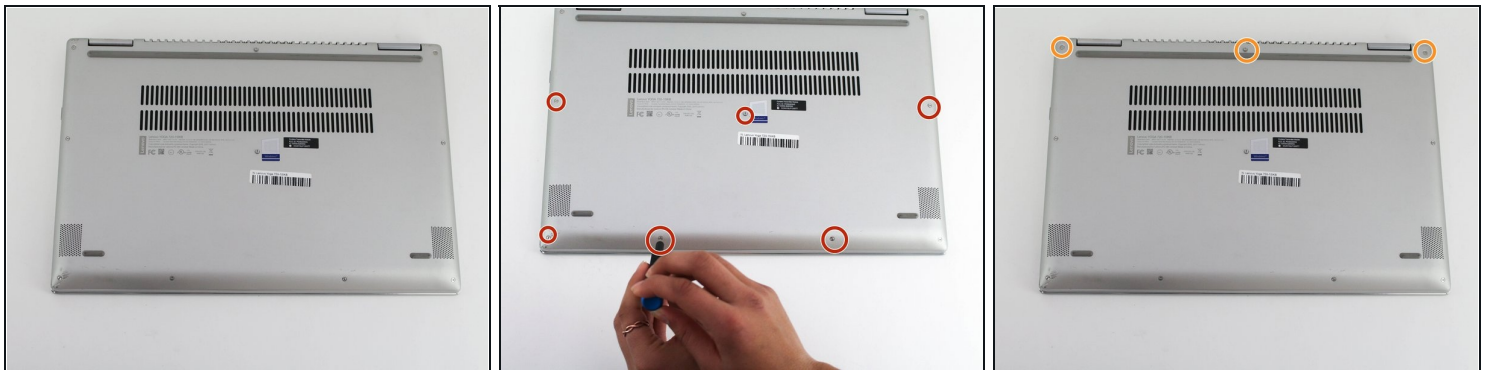
🔧 TOOLS:

Phillips #0 Screwdriver (1)
T5 Torx Screwdriver (1)
iFixit Opening Tool (1)
iFixit Opening Picks (Set of 6) (1)
Phillips #000 Screwdriver (1)

⚙️ PARTS:

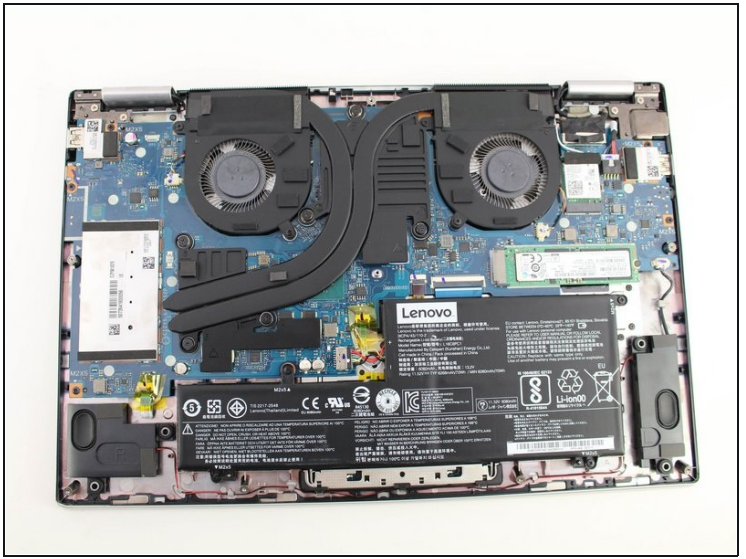
Lenovo Yoga 720 (15") Battery (1)
Lenovo Yoga 720 (15") Battery - Genuine (1)
Lenovo IdeaPad Yoga 720-15 Lower Case (1)
Lenovo IdeaPad Yoga 720-15 Dual Processor Heat Sink Assembly (1)

Step 1 — Bottom Cover



- Power off the device before starting.
- Flip the device over with the hinges facing away from you.
- Remove seven 5.0 mm Torx T5 screws.
- Remove three 9.5 mm Torx T5 screws.

Step 2



- Pry around the edges from one side to another with a plastic opening tool.

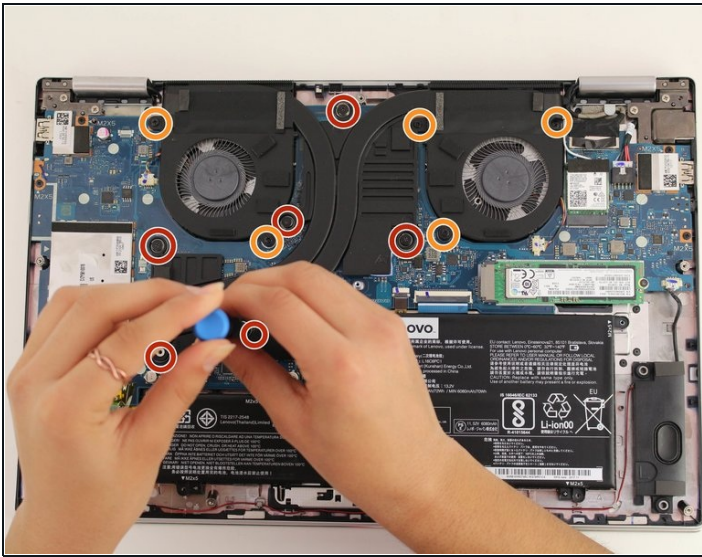
⚠ Do not pry on the side with the hinges because this can break the cover.

- Lift the case from the front until you feel resistance.

⚠ Do not keep lifting after you feel resistance, or the bottom cover can break.

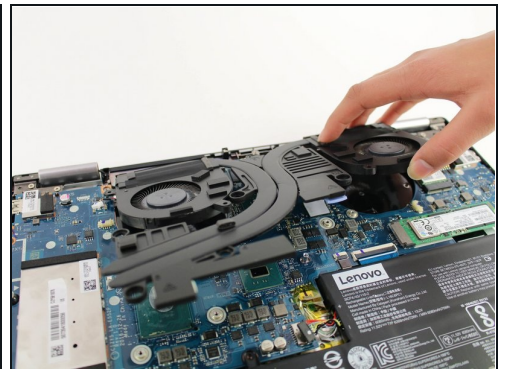
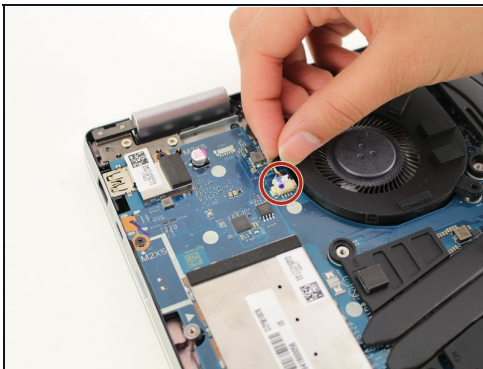
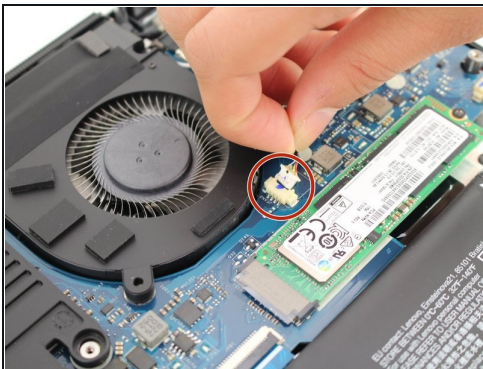
- Pull the cover towards you, away from the hinges.
- Completely lift off the cover.

Step 3 — Fan



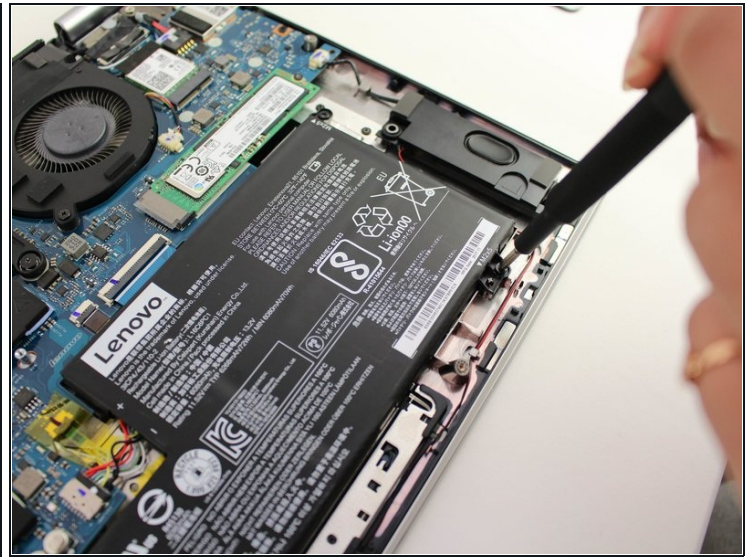
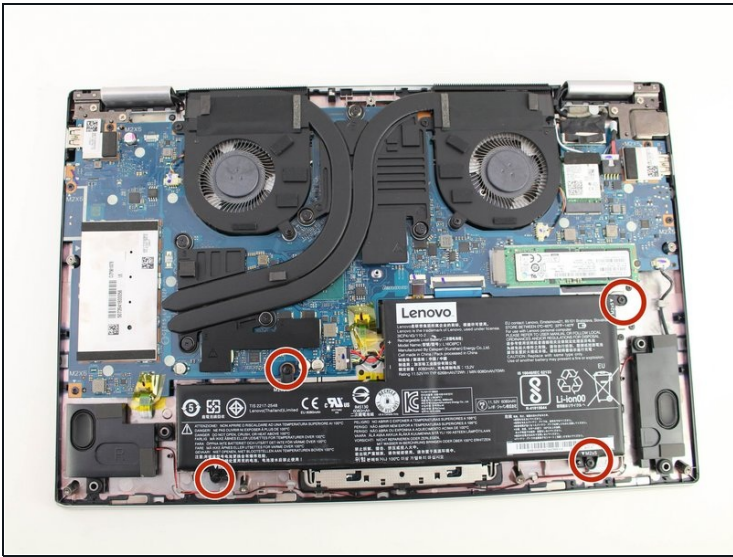
- Remove the six 5.2mm Torx T5 screws holding the fan in place.
- Remove the five 5.0mm Torx T5 screws holding the fan in place.

Step 4



- Disconnect the two fan wire connectors.
 - ❗ Firmly pull the connector out horizontally away from the socket.
- Carefully lift the fan up and out.

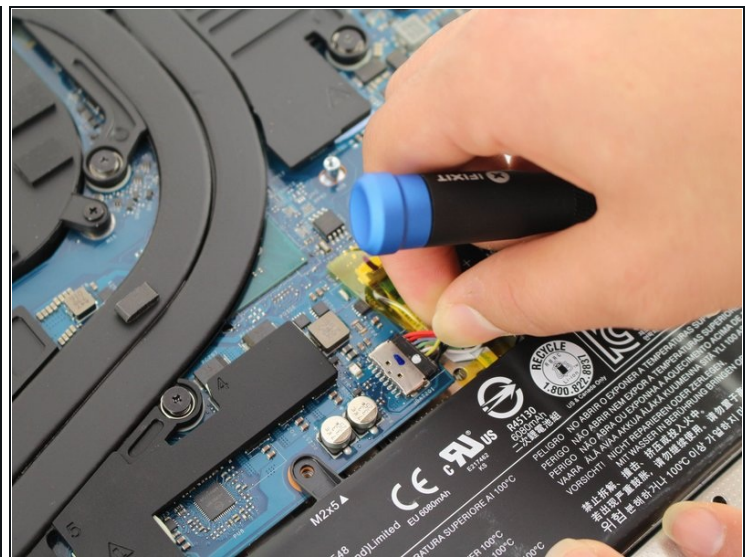
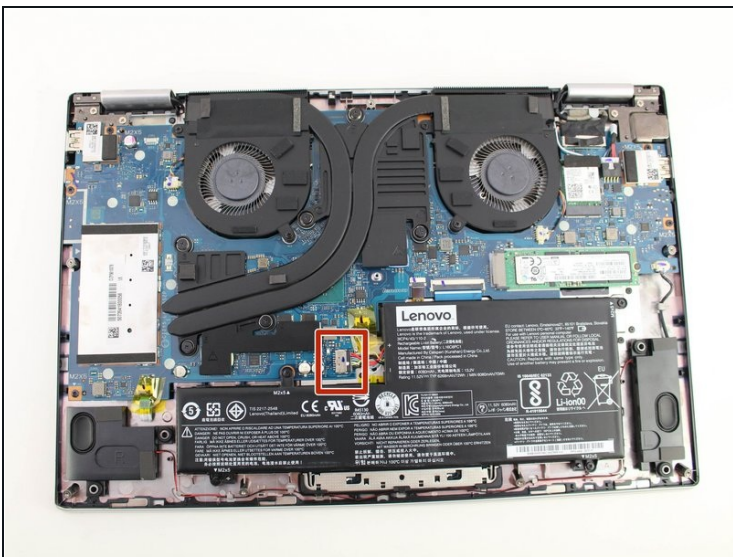
Step 5 — Battery



- Remove the four 4mm screws surrounding the battery with a Phillips #0 screwdriver.

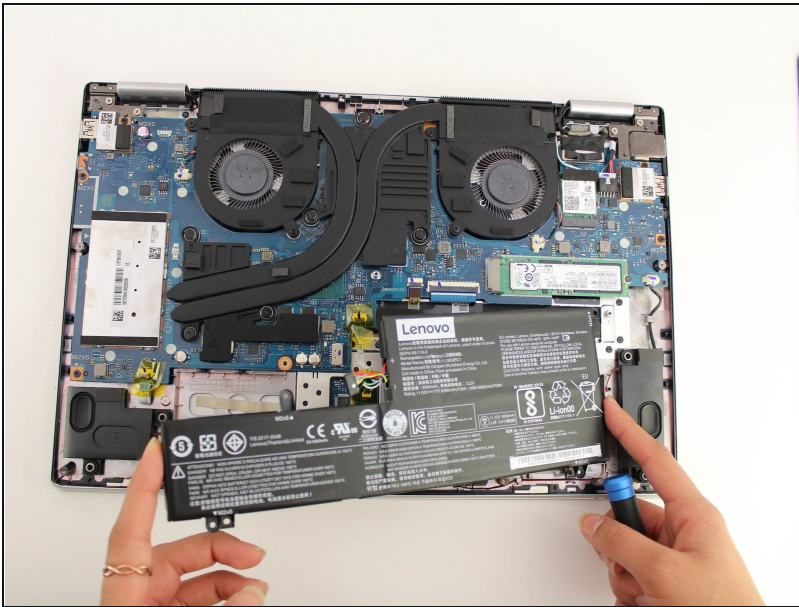
① Each is marked by "M2x5" with a small white arrow pointing to the screw itself.

Step 6



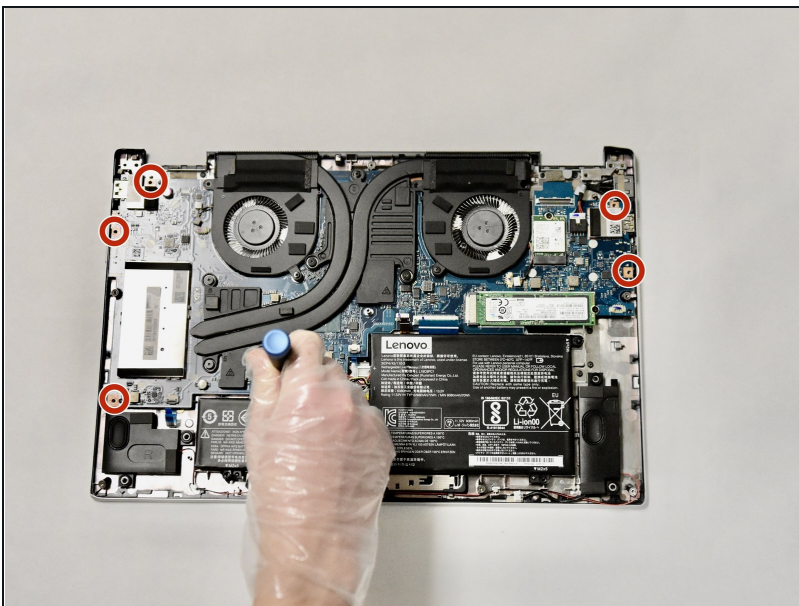
- Pull firmly on the battery connector to disconnect it.

Step 7



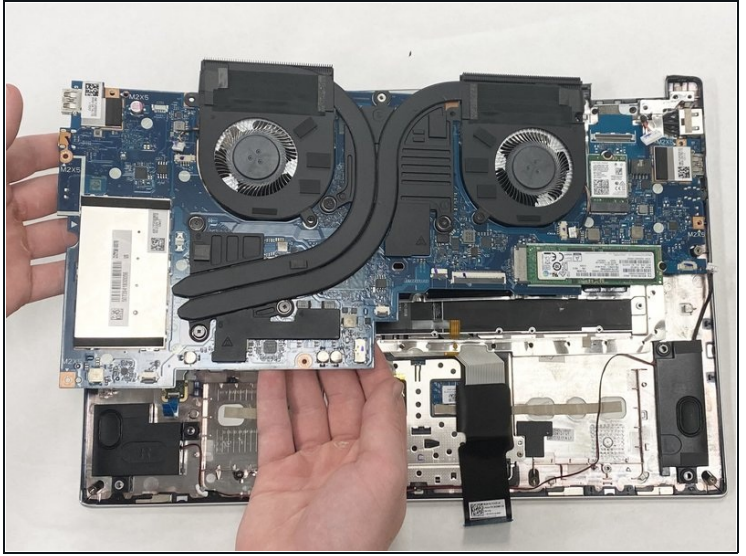
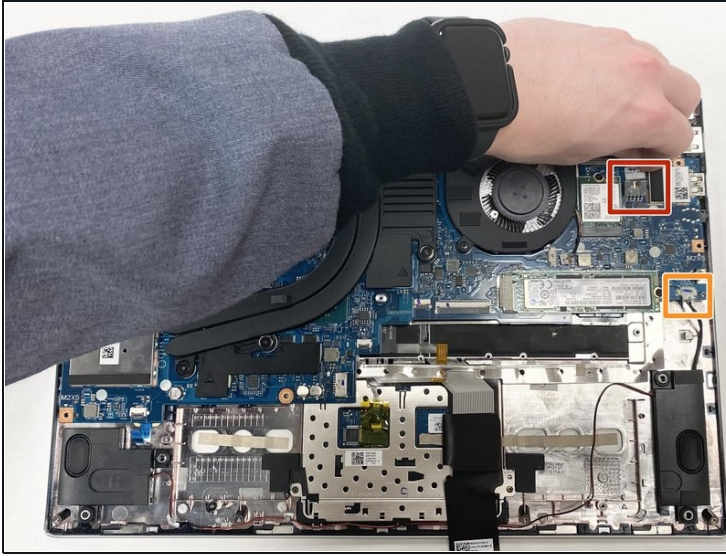
- Lift the battery out of the case to remove it.

Step 8 — Motherboard



- Using the Phillips #000 screwdriver, remove the five screws.

Step 9



- Disconnect the power outlet connector.
- Disconnect the speaker wire connector.
- Carefully lift the motherboard up and out of the device.

To reassemble your device, follow these instructions in reverse order.