



Bosch Maxx WFL2455 Washing-Machine Front panel disassembly

Written By: Flarnity

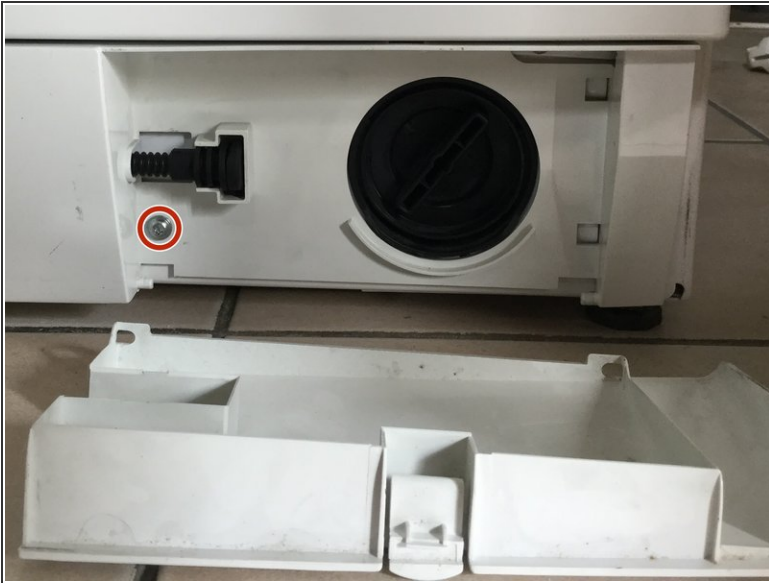




TOOLS:

- [T20 Torx Screwdriver](#) (1)
-

Step 1 — Lower cover



- ⓘ Unplug your device.
- Remove the cover hiding the drain hole.
- Remove the T20 Torx screw which is holding the lower cover.
- Remove the lower cover by sliding it to the right.

Step 2 — Detergent dispenser



- Remove the detergent dispenser by opening it then by pressing on the notch with your finger.

Step 3 — Drum gasket ring



- Remove the ring holding the drum gasket.
 - Start with the spring located near the window hinge.

⚠ Avoid using sharp or cutting tools to avoid damaging the gasket.

Step 4 — Drum gasket



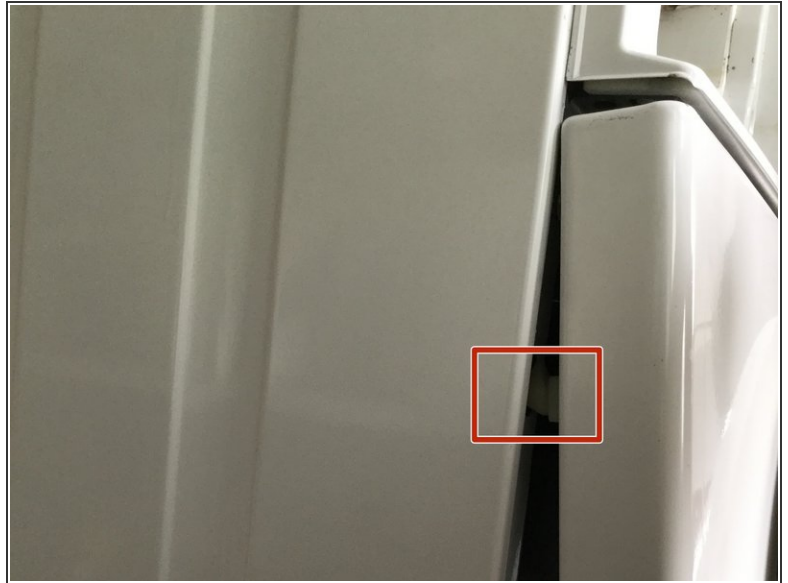
- Insérez ici votre traduction
 - ⓘ Insérez ici votre traduction
 - Move the gasket to the inside of the drum so that it won't bother when you'll be removing the front panel.
- ⚠ Avoid using sharp or cutting tools to avoid damaging the gasket.

Step 5 — Front panel mounting screws



- Remove the two T20 Torx screws located below the front panel.
- Remove the T20 Torx screw located in the detergent dispenser slot.

Step 6 — Removing the front panel



- The front panel is held in place by a strip, held by the previously removed screw of the detergent dispenser slot.
- To remove the front panel, start by sliding it downwards (it should normally fall under its own weight).
- Insérez ici votre traduction
- ⓘ Insérez ici votre traduction
- ⚠ Insérez ici votre traduction

Step 7 — Front panel's connections



- There's an electrical connection between the body of the device and the front panel (probably a window sensor).
- Disconnect the window sensor by lifting the connector's tab and by pulling it down firmly.
- ⓘ On the second picture, the connector is shown partially disconnected.

Step 8 — Wire guide



- Remove the guide from the front panel.
- And voila, the front panel is disassembled!

To reassemble your device, follow the above steps in reverse order.