



Toshiba Satellite L305-S5946 Keyboard Replacement

Replace the keyboard in your Toshiba Satellite L305-S5946.

Written By: Michael Erberich



INTRODUCTION

Use this guide to replace the keyboard in your Toshiba Satellite L305-S5946. Unresponsive or sticky keys are good indicators that the keyboard should be replaced. You must remove the keyboard to access the base housing.



TOOLS:

- [iFixit Opening Tool](#) (1)
 - [Phillips #00 Screwdriver](#) (1)
-

Step 1 — Battery



- Place the laptop upside-down with the display hinges facing away from you.

Step 2



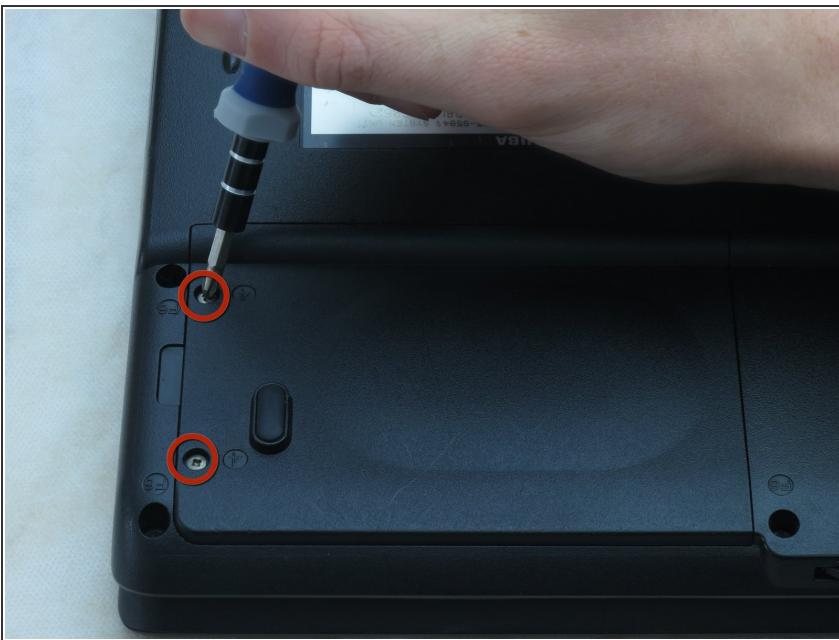
- Slide the latch for the left battery bay to the left.

Step 3



- Slide the latch for the right battery bay to the right and hold.
- Continue to hold the latch while using a plastic opening tool to lift and remove the battery bay cover.
- Remove the battery.

Step 4 — Hard Drive



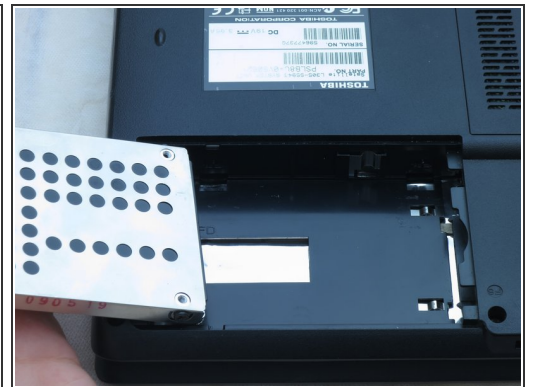
- Loosen the two captive screws on the bottom left corner of the hard drive using a Phillips #1 screwdriver until you hear a click.

Step 5



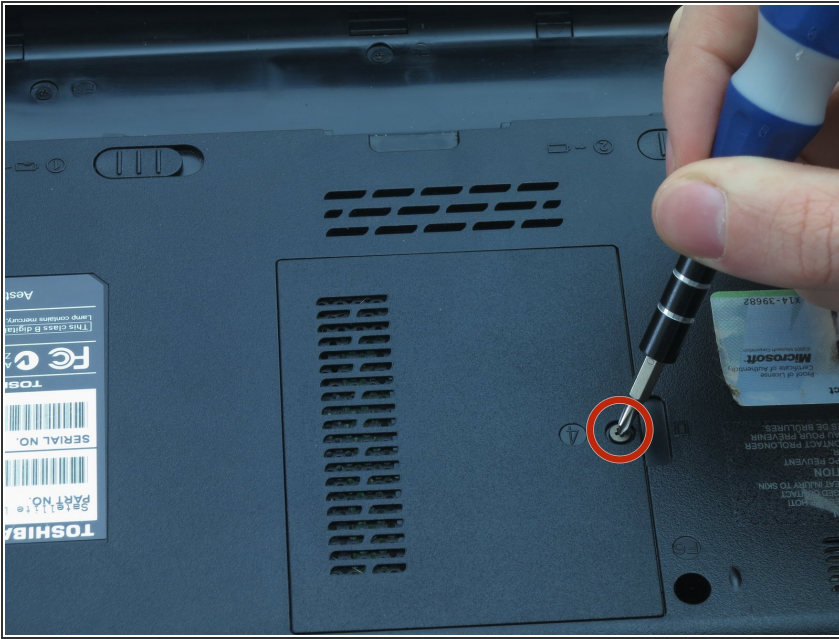
- Lift the hard drive cover using a non-marring iFixit opening tool.
- ⓘ This will expose the hard drive.

Step 6



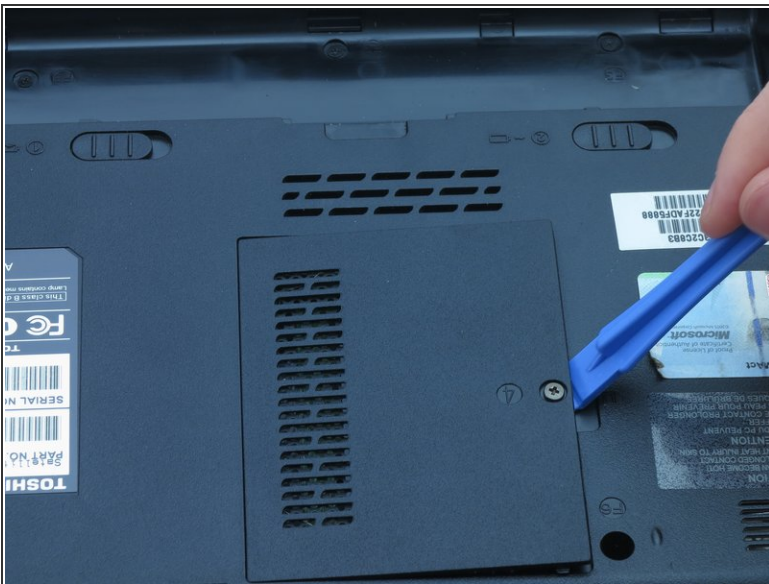
- Slide the hard drive to the left using your fingers.
- Remove the hard drive by inserting an iFixit opening tool under the right side of the hard drive and carefully lifting it out.

Step 7 — RAM



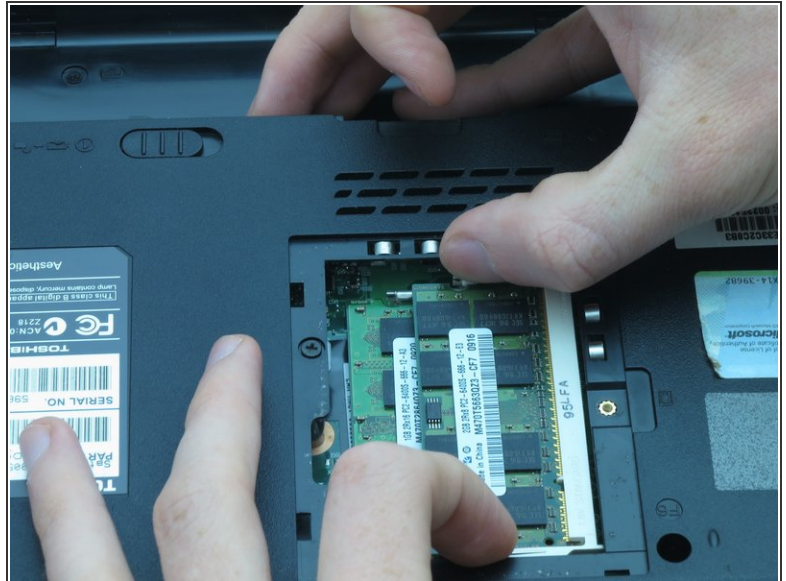
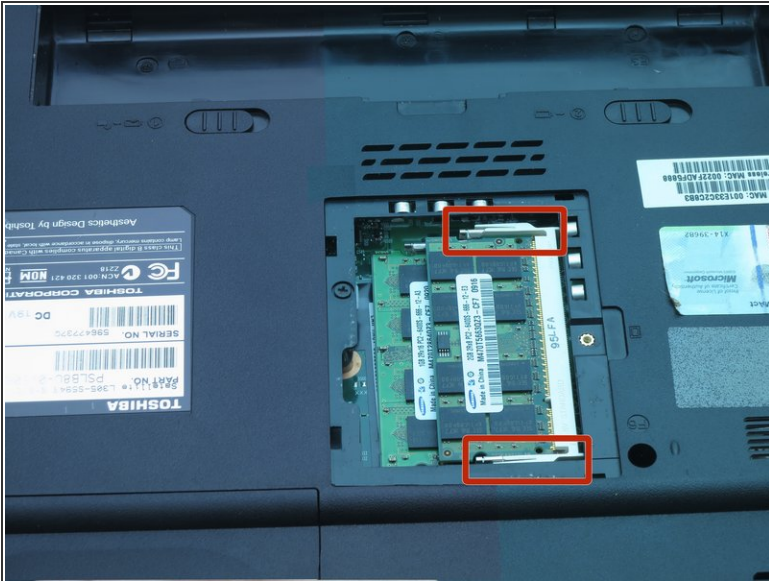
- Using a Phillips #1 screwdriver, turn the screw on the RAM cover until you hear a click.
- ⓘ This is a captive panel screw and remains with the cover.

Step 8



- Remove the RAM cover by inserting the plastic opening tool into the indent and lifting.

Step 9



- Push the white and silver retaining clips away from each side of the RAM card using your fingernails.
- ❗ The RAM card should pop up at an angle.

Step 10



- Pull the RAM card away from the computer.
- Repeat Steps 6 and 7 to remove the other RAM card that may be installed.

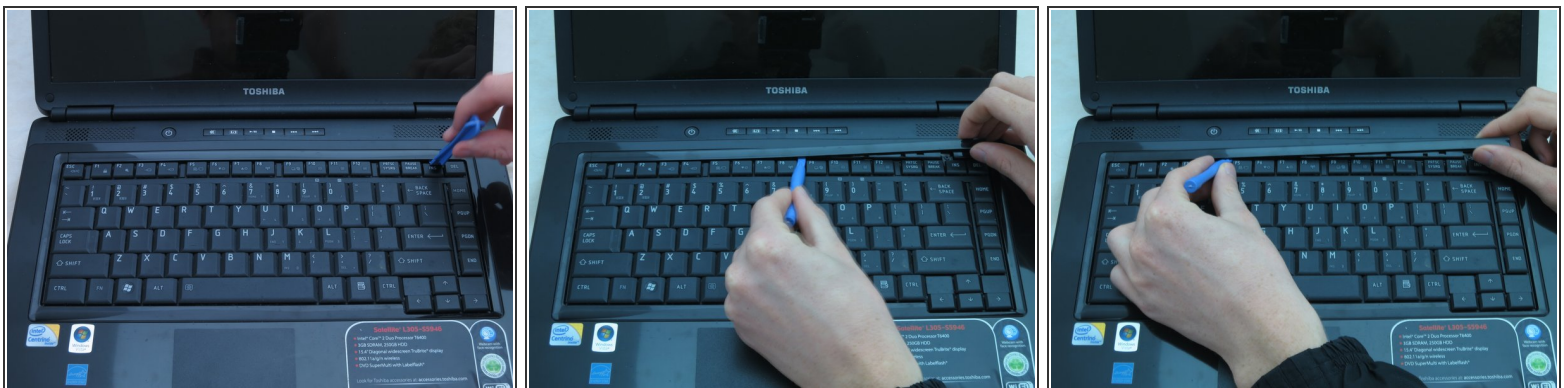
This document was generated on 2022-06-11 04:50:36 AM (MST).

Step 11 — Keyboard



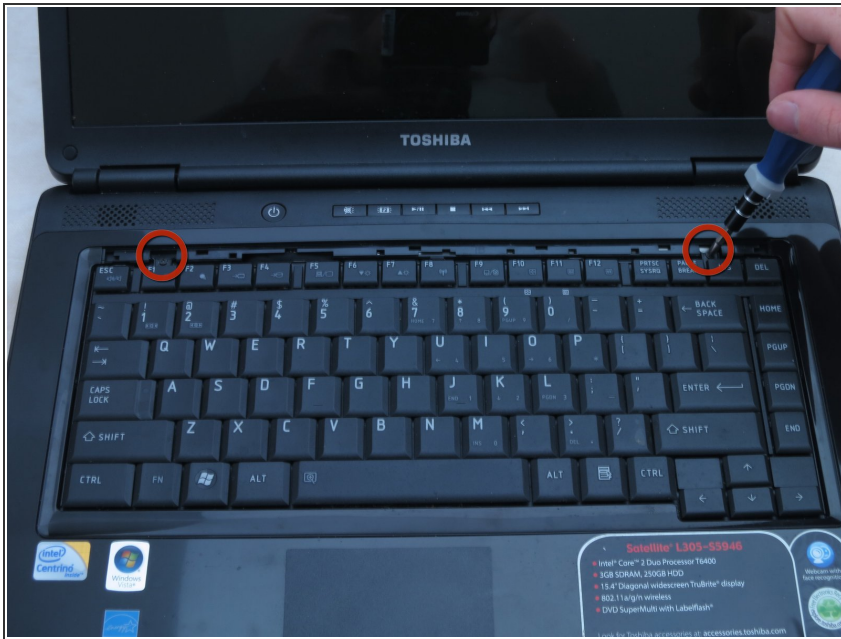
- Place the laptop right-side-up so the screen faces you.

Step 12



- Remove the strip of plastic at the right furthest edge of the keyboard using a plastic opening tool.
- Insert the plastic opening tool at either end of the strip.
- Lift upwards and proceed to the other end while repeating this lifting process every one to two inches.

Step 13

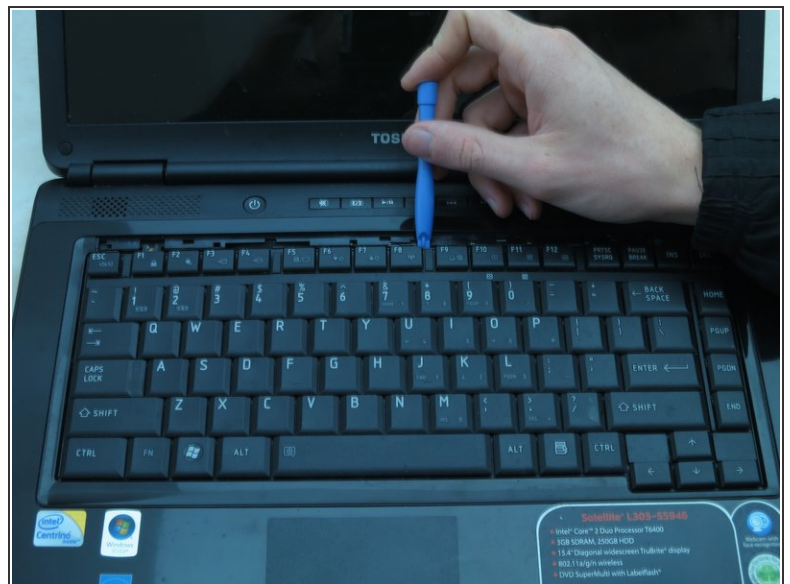
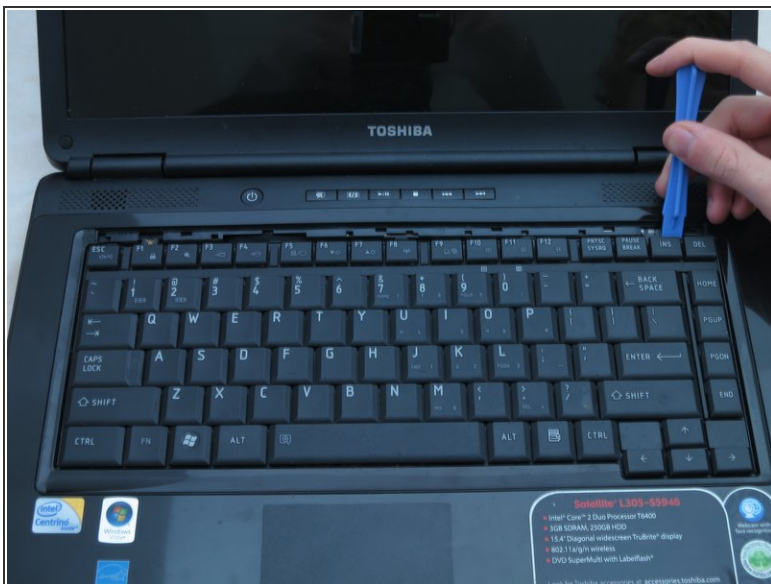


⚠ CAUTION: do not allow hardware or debris into the CPU fan and duct.

- Remove the two 3-mm screws at the top edge of the keyboard using a Phillips #00 screwdriver.

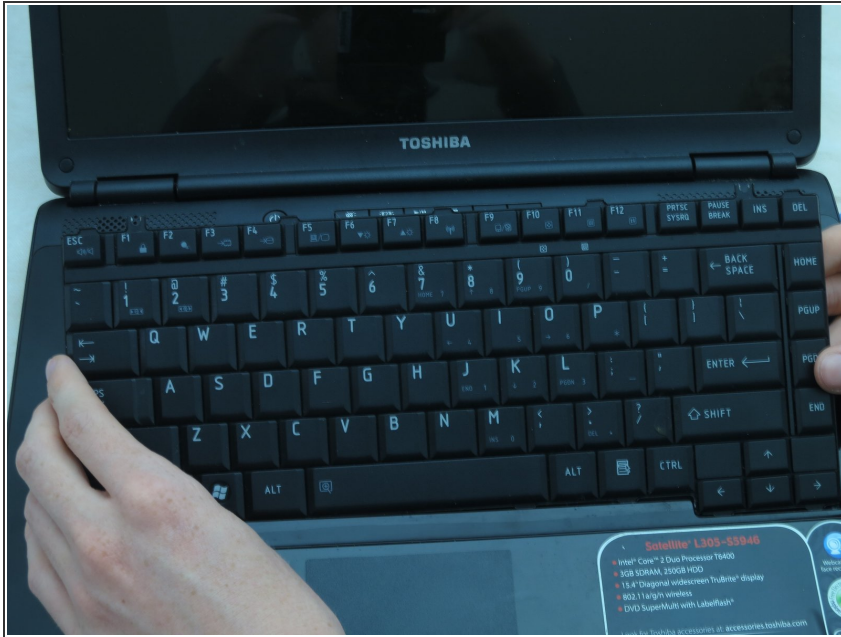
i These are not captive panel screws and, once loosened, will be free to move about the assembly.

Step 14



- Pry the top of the keyboard loose from its casing using a plastic opening tool.

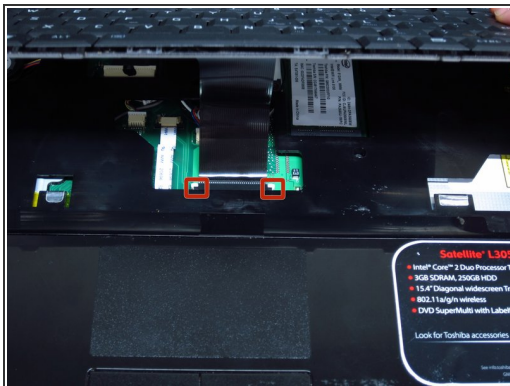
Step 15



- Gently grasp the top of the keyboard and pull it up and toward the screen.

⚠ CAUTION: Pulling too hard could damage the black ribbon cable under the keyboard.

Step 16



- Gently push the two tabs locking the black ribbon cable.
- To remove the black ribbon cable from the motherboard, slide the keyboard toward the screen.
- You may now safely separate the keyboard from the laptop.

To reassemble your device, follow these instructions in reverse order.