



LG Incite Back Panel Replacement

Many hardware repairs require access to the...

Written By: Kimberly Kha



INTRODUCTION

Many hardware repairs require access to the internal components of the device. This guide will show you how to remove the back panel of the LG Incite to access the internal hardware.



TOOLS:

- [Phillips #00 Screwdriver](#) (1)
- [iFixit Opening Tool](#) (1)



PARTS:

- [LG Incite CT810 battery](#) (1)

Step 1 — Battery



- Hold the phone camera-side up and locate the rear cover.

Step 2



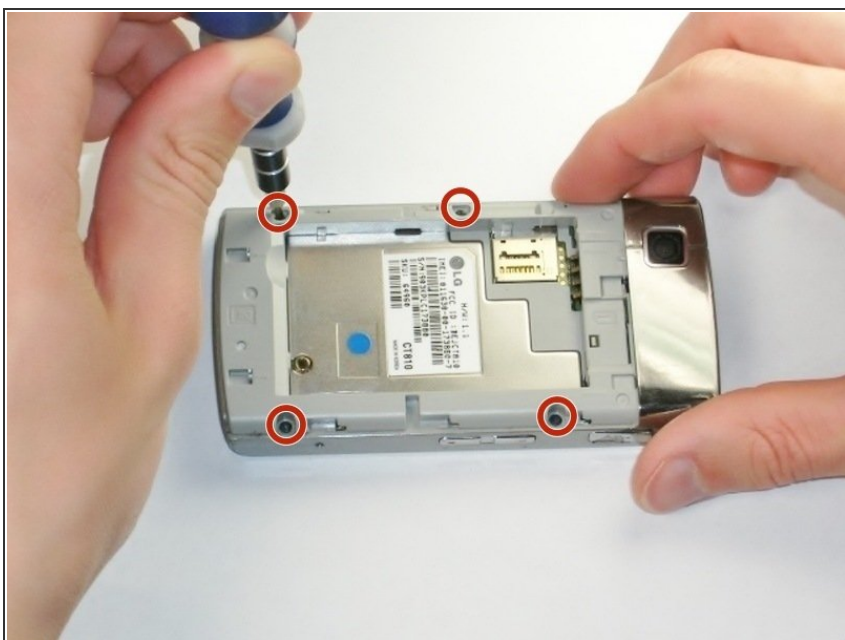
- Place a thumb below the camera, apply a little pressure, and slide the cover toward the bottom of the phone.

Step 3



- Place the plastic opening tool in the small slot below and to the left of the battery.
- Pry the battery upward to remove it.

Step 4 — Back Panel



- Using the #00 Philips screw driver, unscrew the four 4.5mm screws located around the battery compartment.

Step 5



- Wedge the plastic opening tool between the screen and the body of the device, using care to avoid damaging internal components.
- Gently move the tool around the perimeter of the screen to separate it from the body.
- ⓘ You should not completely separate the screen from the device in this step.

Step 6



- Flip the device over so the battery compartment faces up.
- Press the scroll wheel, located in the upper-left corner, into the device to avoid damage.
- Gently insert the plastic opening tool into the seam between the frame and front cover to separate the back panel from the device.

⚠ The volume, lock, and camera buttons are loose, so be careful not to misplace them.

To reassemble your device, follow these instructions in reverse order.