



# Motorola Cliq Camera Replacement

This guide explains how to replace a damaged or...

Written By: Tony Tran



# INTRODUCTION

This guide explains how to replace a damaged or broken camera on the Motorola Cliq. The camera is very fragile, so take care getting it out.

---

## TOOLS:

[iFixit Opening Tool](#) (1)

[1.5 mm Flathead Screwdriver](#) (1)

[Spudger](#) (1)

[T4 Torx Screwdriver](#) (1)

---

## Step 1 — Battery



- Turning over your phone, place two fingers on the back cover and apply pressure away from the camera to slide the back cover off.

## Step 2



- Pinch the battery pull tab located below the camera, pull it upwards, and remove the battery.
  - ① The pull tab may be tucked under the battery.

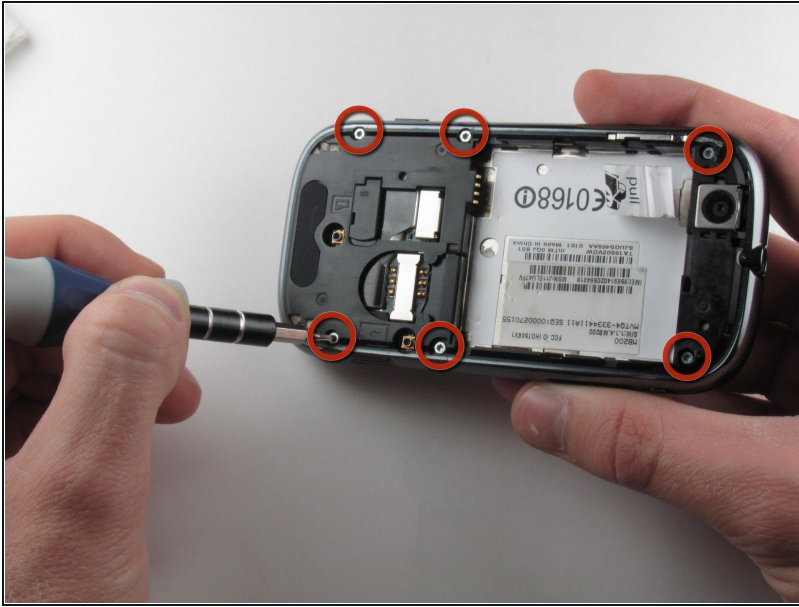
## Step 3 — Rear Casing



- Wedge a plastic opening tool behind the panel covering the camera, pry it up, and remove it using your fingers.
  - ① The panel is held down by adhesive and may require you to wedge and pry the right side of the panel before it can be easily removed.



## Step 4



- Remove the six 4.0 mm T4 Torx screws which line the edge of the back of the phone.

## Step 5



- Turn the phone over and slide out the keyboard.
- Wedge a plastic opening tool where the keyboard meets the back casing of the phone next to the headphone jack.
- Carefully pry open the back casing along the keyboard's edge until at least two corners of the back casing are separated from the keyboard.

⚠ Do not fully separate the rear panel from the phone. A cable is connecting the two parts together.

## Step 6



- Carefully separate the back casing from the rest of the phone.

## Step 7



- Gently pry ZIF connector upwards using the flat end of a spudger tool.
  - ⚠ The ZIF connector is glued down. Be gentle! Ripping it off or breaking it will make your phone inoperable.
  - ☑ You may need adhesive to keep your power cable in place when reassembling your phone.

## Step 8



- Press your thumb against the orange power cable and pull it down slowly to disconnect the power cable from the bottom of the keyboard.
- The rear casing and the rest of the phone should now be completely separated.

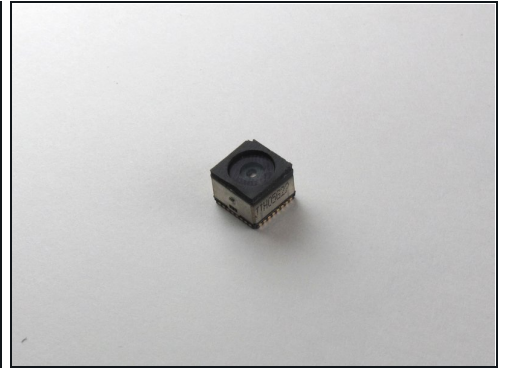
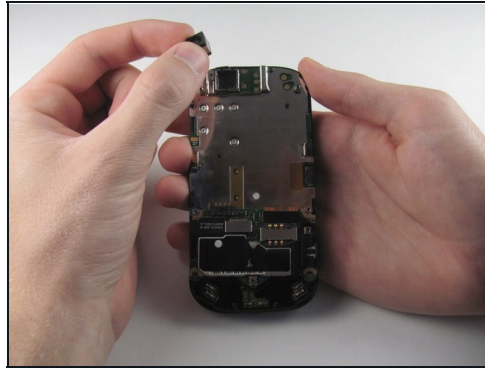
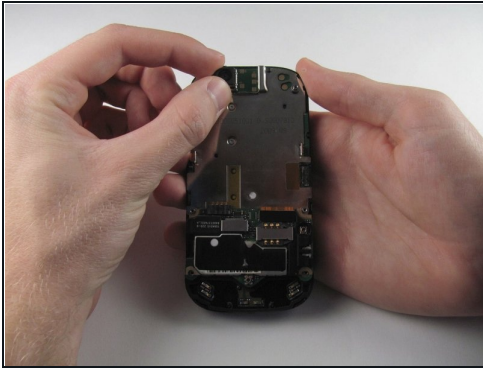
## Step 9 — Camera



- Insert a 1.5mm flat head screw in the slit in between the camera housing and the bottom of the camera.
- Lightly pry upwards and the camera should come loose from the housing.



## Step 10



- Carefully grab the sides of the camera with your fingers and remove the camera.
    - ① The foam cover on the top of the camera deforms and tears easily, so handle it with care.
- 

To reassemble your device, follow these instructions in reverse order.