



Motorola Cliq Motherboard Replacement

This guide explains how to replace a damaged or...

Written By: Tony Tran



INTRODUCTION

This guide explains how to replace a damaged or broken motherboard on the Motorola Cliq. You will need to be ready to handle many small parts, including 4.0 mm screws and multiple small panels.

TOOLS:

[iFixit Opening Tool](#) (1)

[Spudger](#) (1)

[T4 Torx Screwdriver](#) (1)

Step 1 — Battery



- Turning over your phone, place two fingers on the back cover and apply pressure away from the camera to slide the back cover off.

Step 2



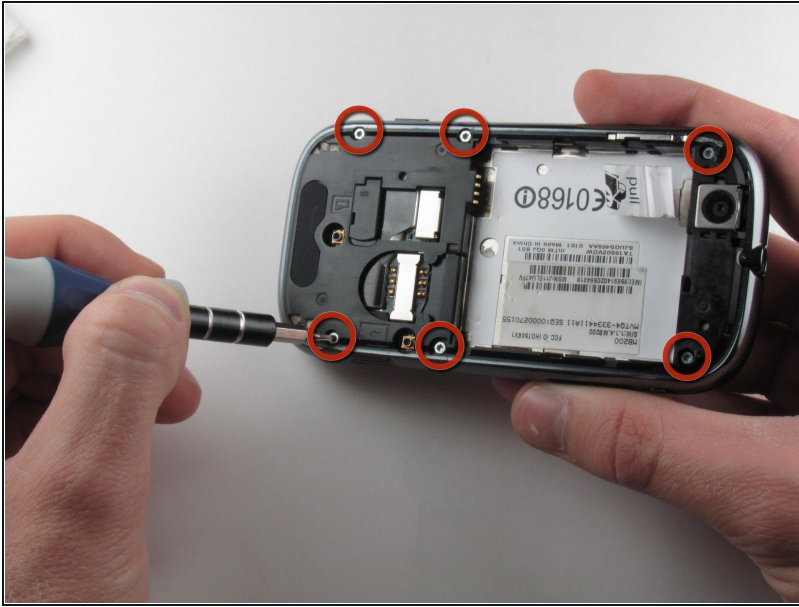
- Pinch the battery pull tab located below the camera, pull it upwards, and remove the battery.
 - ① The pull tab may be tucked under the battery.

Step 3 — Rear Casing



- Wedge a plastic opening tool behind the panel covering the camera, pry it up, and remove it using your fingers.
 - ① The panel is held down by adhesive and may require you to wedge and pry the right side of the panel before it can be easily removed.

Step 4



- Remove the six 4.0 mm T4 Torx screws which line the edge of the back of the phone.

Step 5



- Turn the phone over and slide out the keyboard.
- Wedge a plastic opening tool where the keyboard meets the back casing of the phone next to the headphone jack.
- Carefully pry open the back casing along the keyboard's edge until at least two corners of the back casing are separated from the keyboard.

⚠ Do not fully separate the rear panel from the phone. A cable is connecting the two parts together.

Step 6



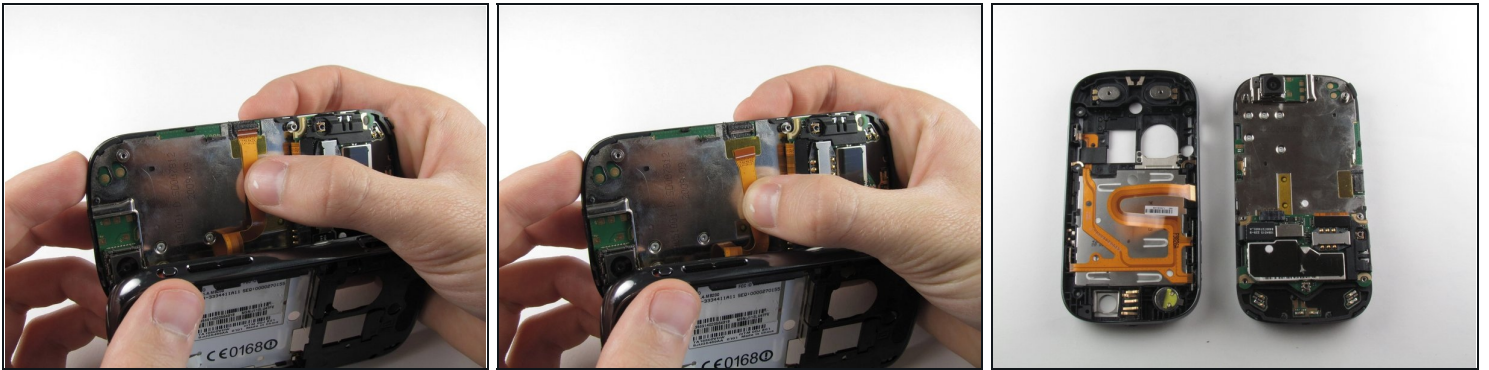
- Carefully separate the back casing from the rest of the phone.

Step 7



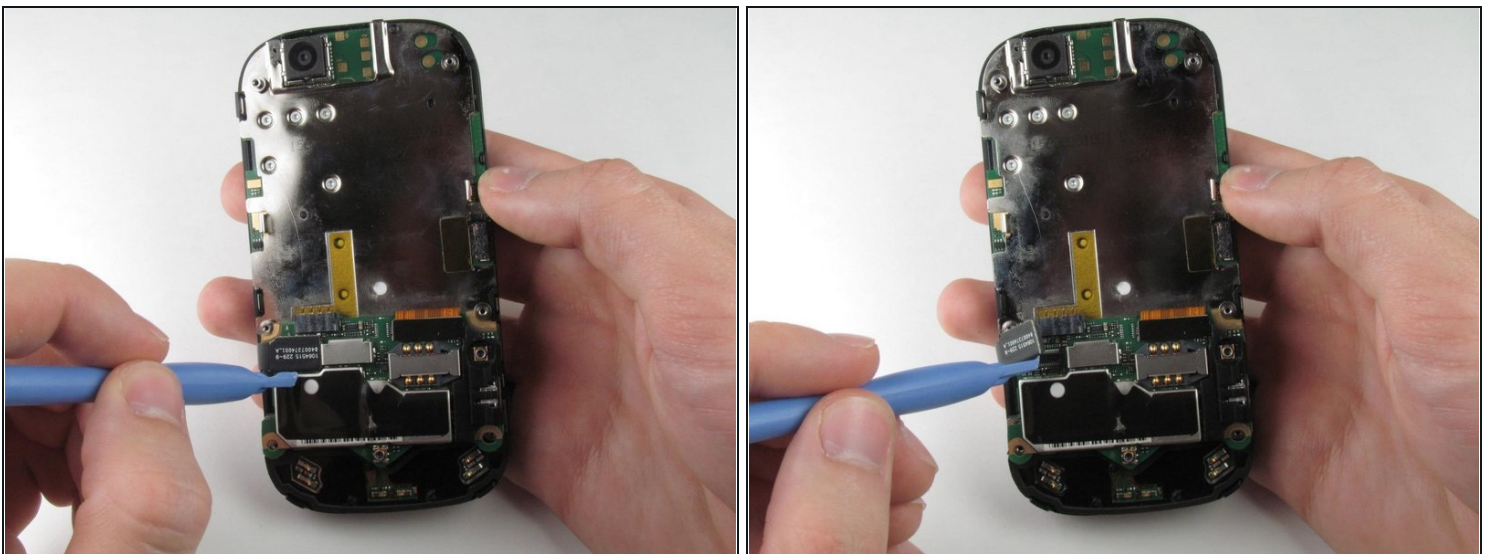
- Gently pry ZIF connector upwards using the flat end of a spudger tool.
 - ⚠ The ZIF connector is glued down. Be gentle! Ripping it off or breaking it will make your phone inoperable.
 - ☑ You may need adhesive to keep your power cable in place when reassembling your phone.

Step 8



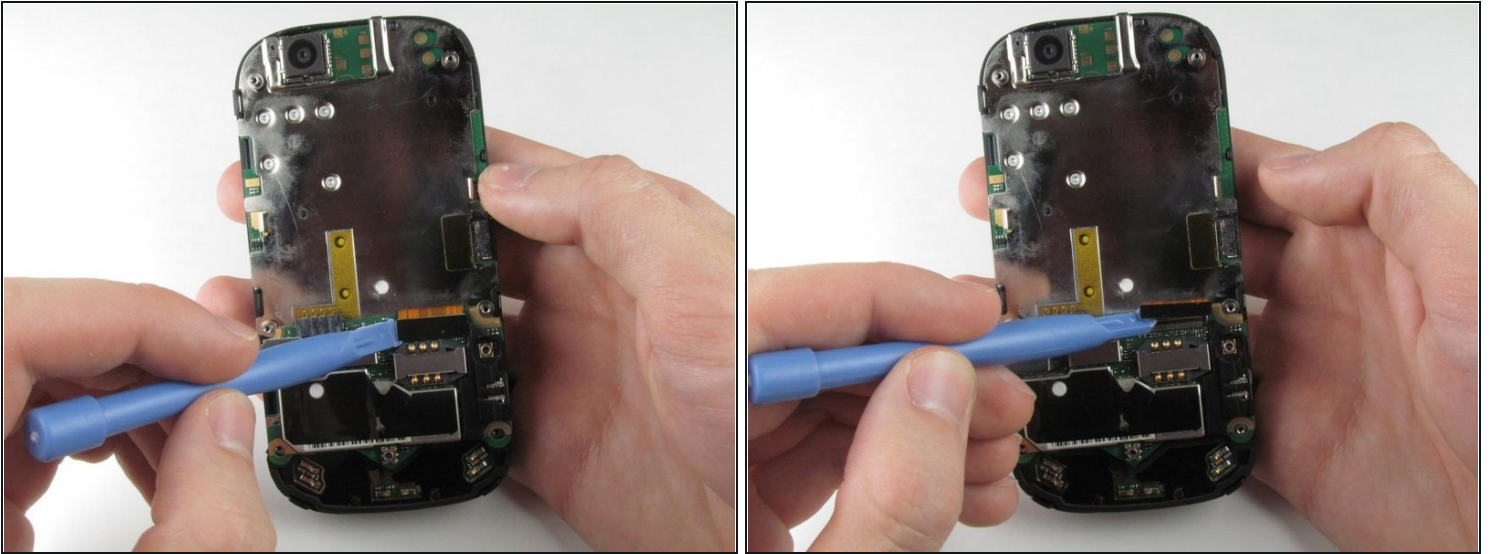
- Press your thumb against the orange power cable and pull it down slowly to disconnect the power cable from the bottom of the keyboard.
- The rear casing and the rest of the phone should now be completely separated.

Step 9 — Motherboard



- Wedge the plastic opening tool underneath the black display connector and pry it off its socket on the motherboard.

Step 10



- Pry the orange keyboard connector from its socket on the motherboard using the edge of the plastic opening tool.

Step 11



- Carefully grab the sides of the motherboard with your fingers and remove it from the phone.

To reassemble your device, follow these instructions in reverse order.