



# Royal Sovereign Fan Replacement

How to replace the fan of an 7.75-in x 8 inch gray Royal Sovereign space heater.

Written By: Mohammed Jubair Rabbani



---

## INTRODUCTION

This guide provides an understanding of how to replace the cooling fan inside of a Royal Sovereign electric heater. Electric Heaters are used daily during the winter season and sometimes they can overheat due to defects in the cooling fan. This guide will show you how to disassemble the heater and replace the fan. This way, you can keep using the heater for a longer period of time.



### TOOLS:

- [Phillips #0 Screwdriver](#) (1)
  - [Screw Extracting Pliers](#) (1)
-

## Step 1 — Fan



**⚠ Make sure that the heater is unplugged and completely cooled down.**

- Turn the heater so the back is facing up.
- Remove all six 14 mm screws using the Philips #0 screwdriver.

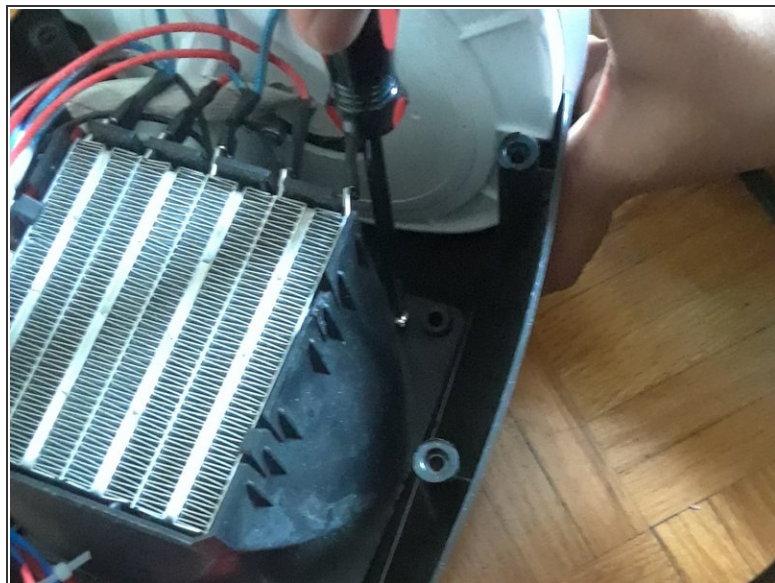
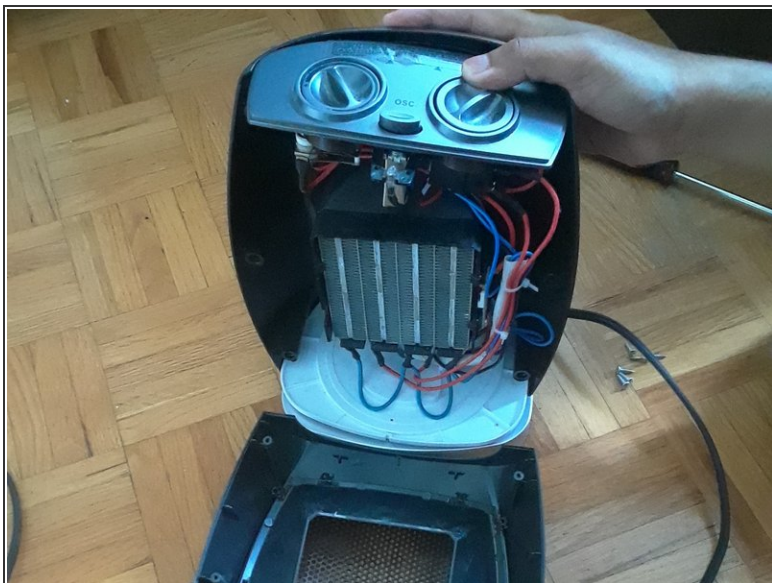
## Step 2



- Separate the back case from the heater.

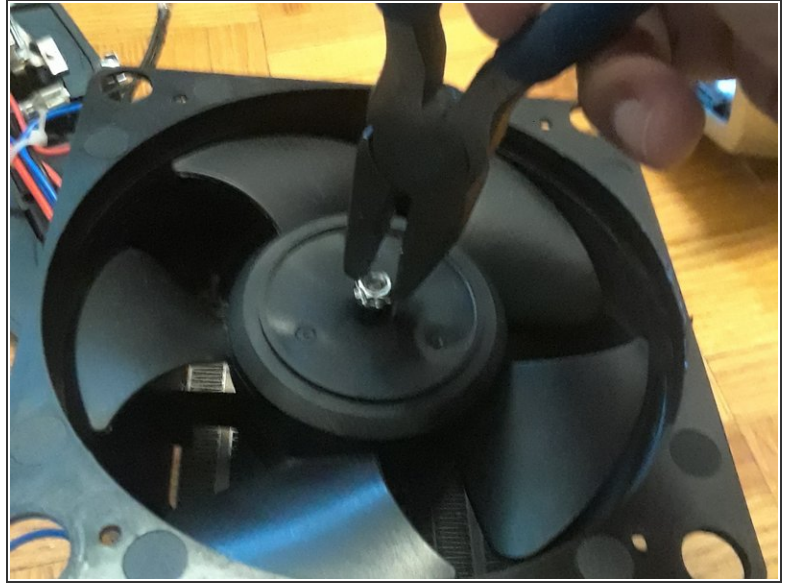
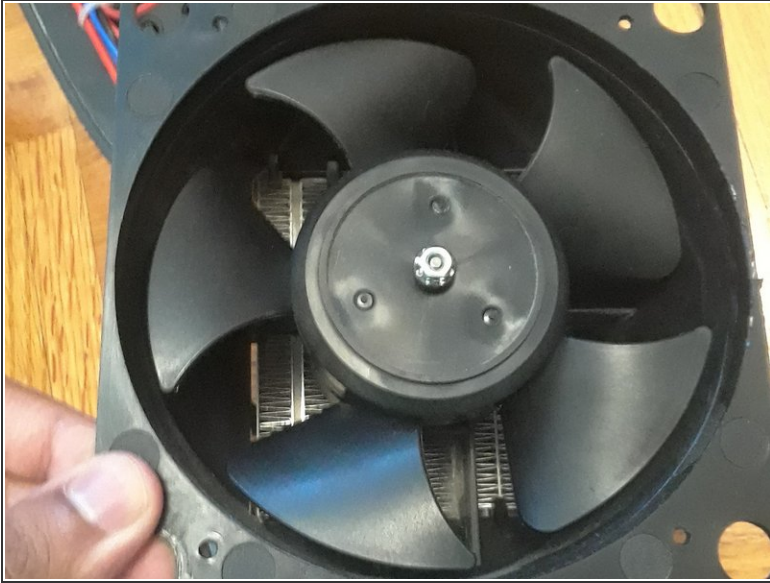


## Step 3



- i You are left with the motor and wires attached to the front case.
- Use the Phillips #1 screwdriver to remove the four 14 mm screws attaching the motor to the front case..
- i Do not untangle the wires

## Step 4



- Turn the motor over to reveal the fan.
- Use a plier to twist and unscrew the hexagonal screw attached to the fan.
- ⓘ Do not untangle the wires

## Step 5



- Take the fan out.

To reassemble your device, follow these instructions in reverse order.