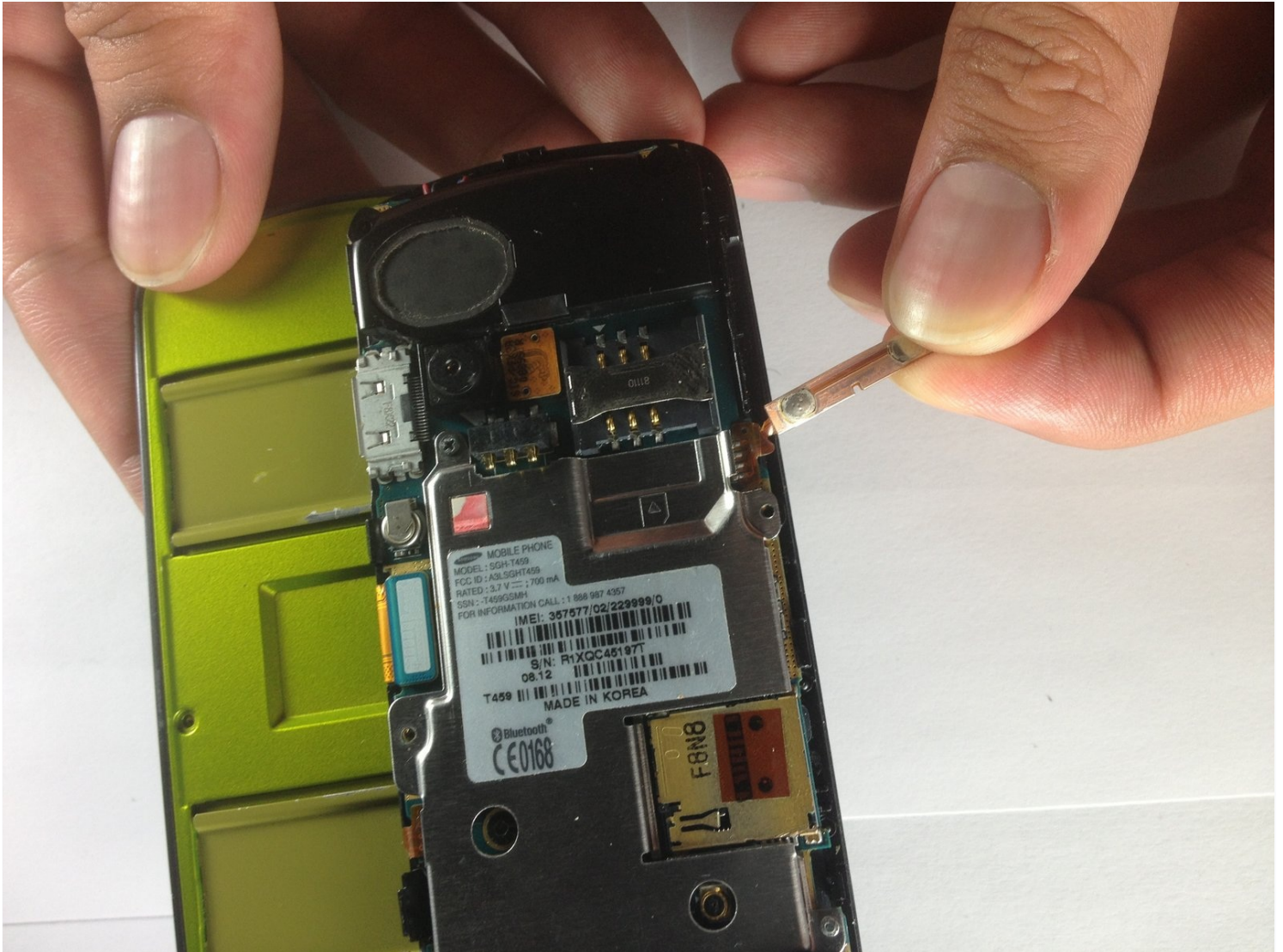




# Disassembling Samsung Gravity SGH-T459 Keypad

This guide will teach you how disassemble and...

Written By: William Glatz



# INTRODUCTION

This guide will teach you how disassemble and reassemble the keypad to your Samsung Gravity SGH-T459.

## TOOLS:

[Phillips #1 Screwdriver](#) (1)

[iFixit Opening Tool](#) (1)

[Tweezers](#) (1)

## Step 1 — Disassembling Samsung Gravity SGH-T459 Back Cover



- Press and hold the End key to power down the cell phone.
- Gently remove the back cover with your fingers by sliding it in the direction of the arrows.

## Step 2 — Disassembling Samsung Gravity SGH-T459 Battery



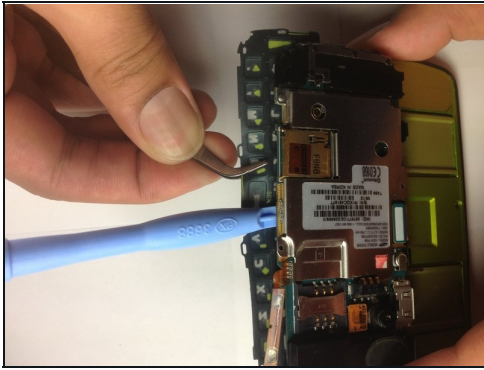
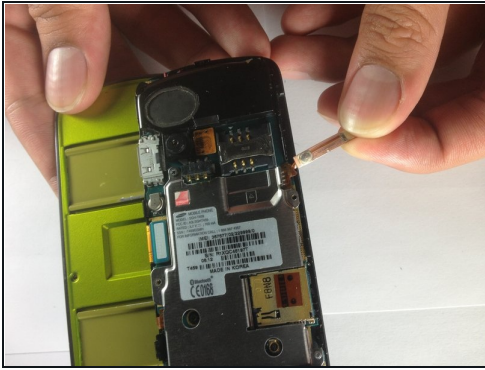
- Gently lift up and remove battery with your fingers in the direction of the arrows.

## Step 3 — Rear Case



- Hold the cell phone steady with one hand. With the other hand, use a Phillips screwdriver to remove all 6 screws around the edges of the rear case.
- Slide the phone open.
- Use a plastic prying tool to pry open the edge of the green trim near the space bar of the keypad. You should hear the rear case unsnap.
- Gently lift and remove the rear case from the cell phone.

## Step 4 — Keypad



- Gently remove the two button contacts with your fingers.
  - Use a plastic prying tool to pry the keypad away from the circuit board.
  - Use [tweezers](#) to gently remove the keypad.
- 

To reassemble your device, follow these instructions in reverse order.