



Display Assembly Teardown

Teardown of the display assembly to access components such as the wifi antennas and LCD

Written By: Keagan Weis



INTRODUCTION

Guide to show how to tear down the display assembly from a 2013 MacBook Pro 15"

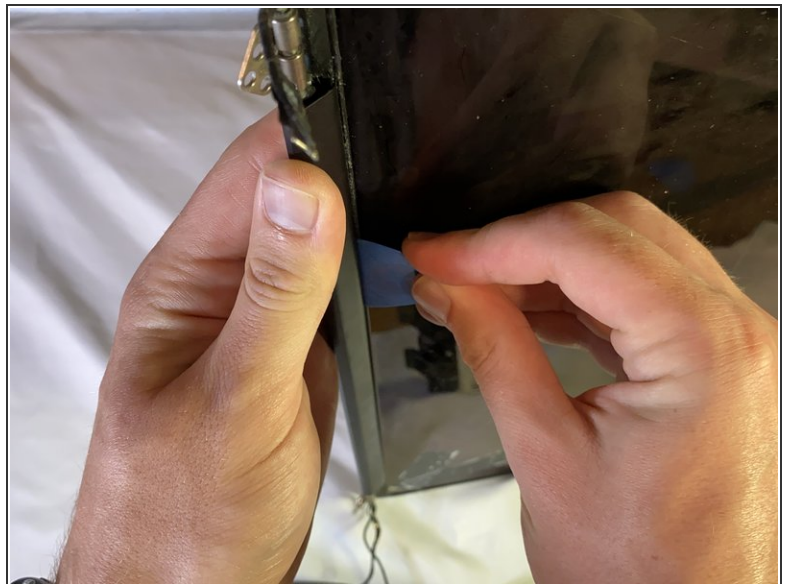
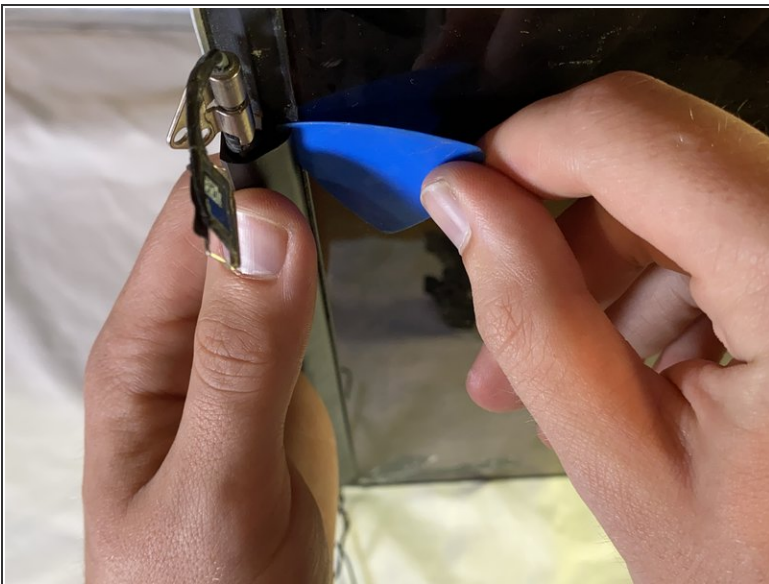
****I performed this teardown on a display assembly that already had cracked glass and a broken LCD and did not test it afterward.****

Step 1 — Warnings



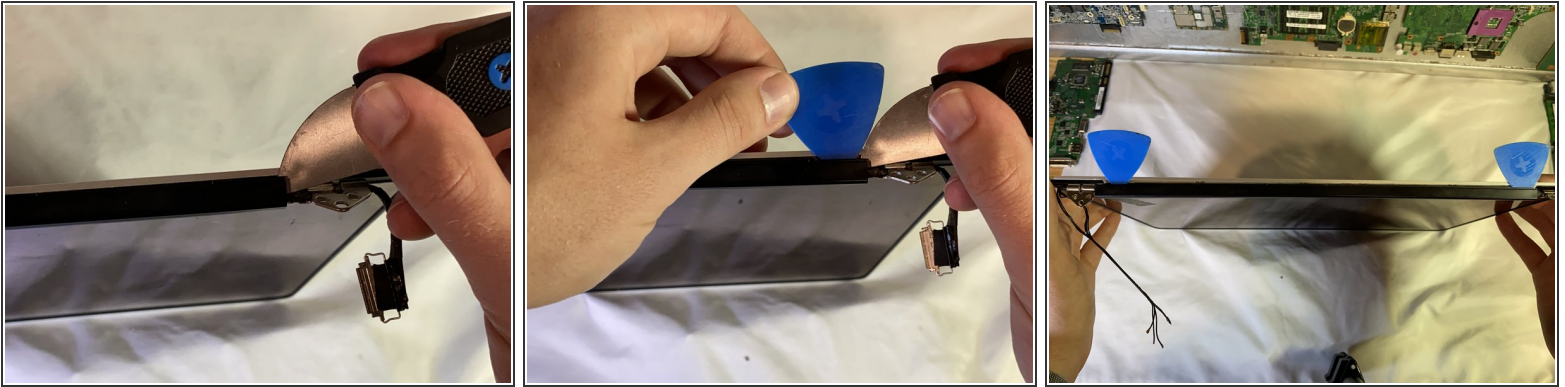
- ⚠ This is a very in-depth process with fragile plastics that easily break. Continue at your own risk.
- ⚠ Be cautious of any components that are already broken before beginning

Step 2 — Plastic Hinge Cover Part 1



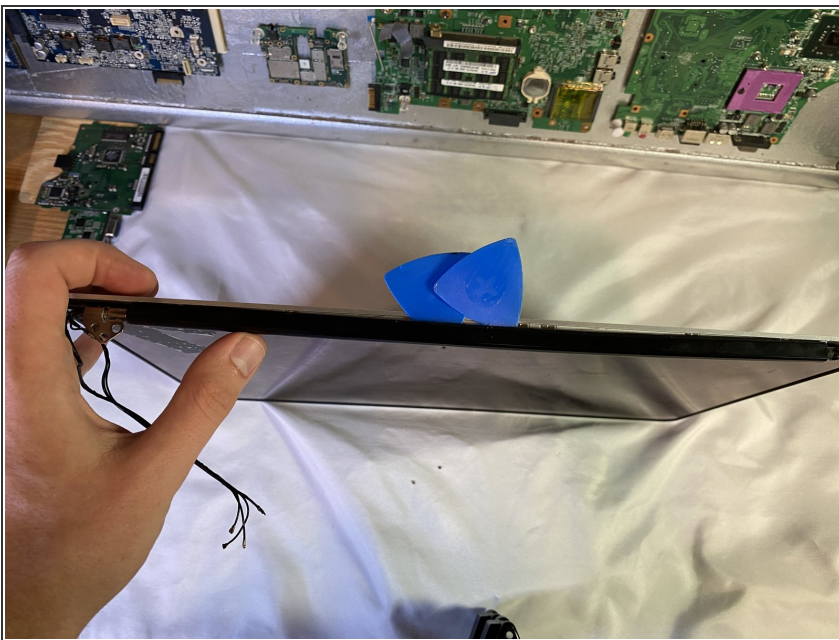
- Loosen the adhesive between the hinge cover and screen by inserting an opening pick and sliding it across

Step 3 — Plastic Hinge Cover Part 2



- Take a Jimmy (or similar tool) and pry up one corner of the hinge cover, and then insert an Opening Pick (or similar tool) where the Jimmy was
- Repeat the same process with the other side
- Now you should have one Opening Pick on each side of the hinge cover

Step 4 — Plastic Hinge Cover Part 3



- Slide the picks toward the center of the plastic hinge cover
- ⓘ It doesn't matter which side you do first, or if you do one the entire way. The reason for putting two in was in case one slips out, then you don't have to use the Jimmy again.

⚠ You may experience a good bit of resistance, and the plastic may begin to bend and break

Step 5 — Finally Removing the Plastic Hinge Cover

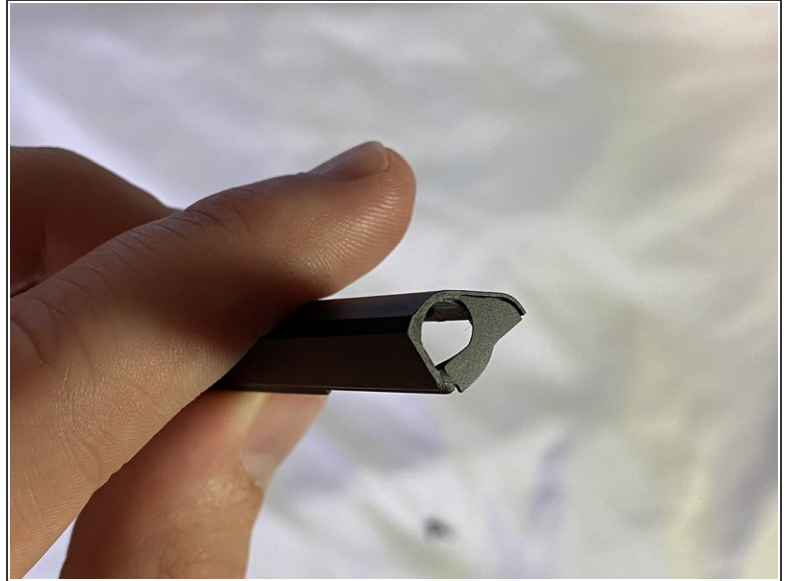
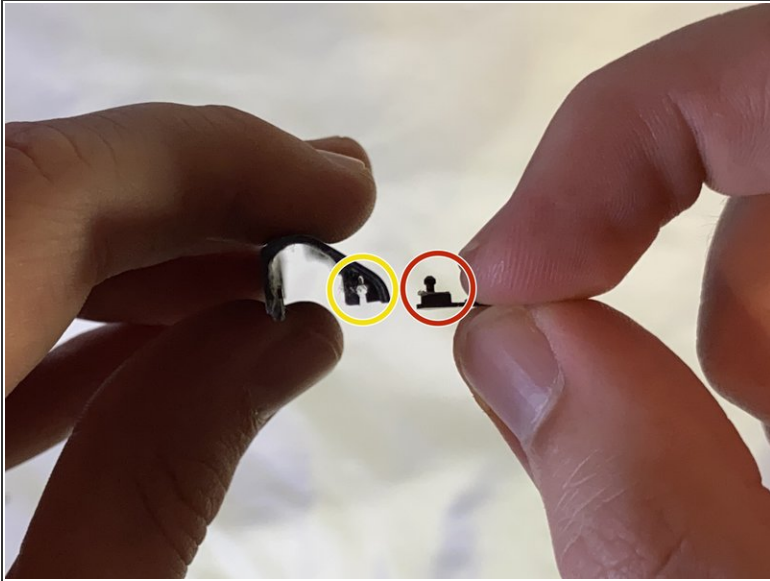



- Roll the hinge cover toward the screen to free the clips nearest to the glass

⚠ The plastic clips holding it on are very fragile and will break if not done carefully

- ⓘ There are two little clips that fit in near the area the Jimmy was inserted earlier, and will come out at this point. They are very fragile and may break.

Step 6 — Inserting plastic clips into the plastic hinge cover



 This step is for reassembling the display assembly, if you somehow didn't irreversibly damage it. (also congrats!)

- The clips are put back in place by first lining up the little pin with the hole on the hinge cover
- Then, push it up and back into its place

Step 7



- Grab a Phillips 00 bit and take out

To reassemble your device, follow these instructions in reverse order.