



iHome iD95 Bottom Cover Replacement

Replace the bottom cover to make it look new...

Written By: Vincent Chan



INTRODUCTION

Replace the bottom cover to make it look new and shiny.

TOOLS:

[Phillips #1 Screwdriver](#) (1)

[iFixit Opening Tool](#) (1)

[Spudger](#) (1)

Step 1 — Backup Battery



- Before taking apart the iD95, disconnect the AC cord from the wall socket and AC adapter from the DC jack. Remove any iPods, iPhones, and iPads attached to the device.
- Flip over the iD95 so the bottom cover is visible and the LCD screen is facing you.

Step 2



- Remove the 10 mm-length, 5 mm-head screw using a Phillips #1 screwdriver.

Step 3



- Use a plastic opening tool to take out the backup battery.

Step 4 — Bottom Cover



- Unscrew five 17 mm-length, 6 mm-head screws using a Phillips #1 screwdriver.

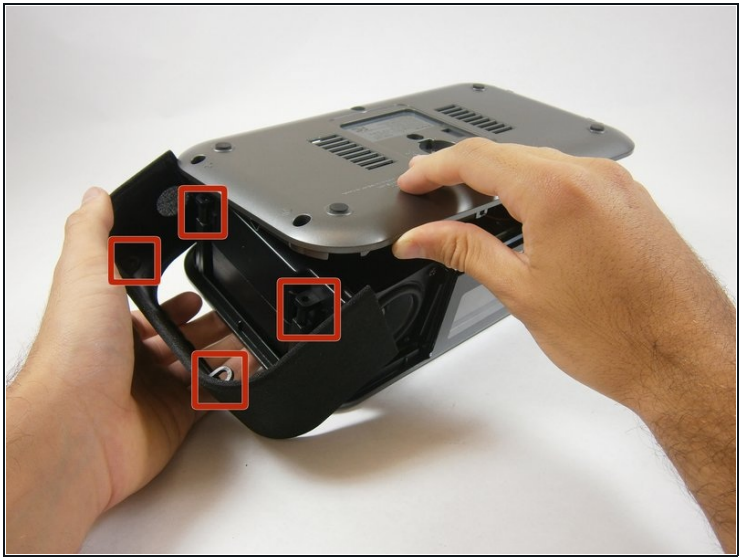
Step 5



⚠ The bottom cover is attached to the back cover by two plastic clips. Don't use excessive force.

- Insert a plastic opening tool between the edge of the bottom cover and the main body.
- Gently pry the bottom cover from the body. Start anywhere along the front side of the iD95 and work your way around.
- Grip the bottom portion of the device and gently lift the front part of the bottom cover a couple centimeters up.

Step 6



⚠ Potential for device damage: Be careful not to use too much force or you might break the plastic rings holding the side panels in place.

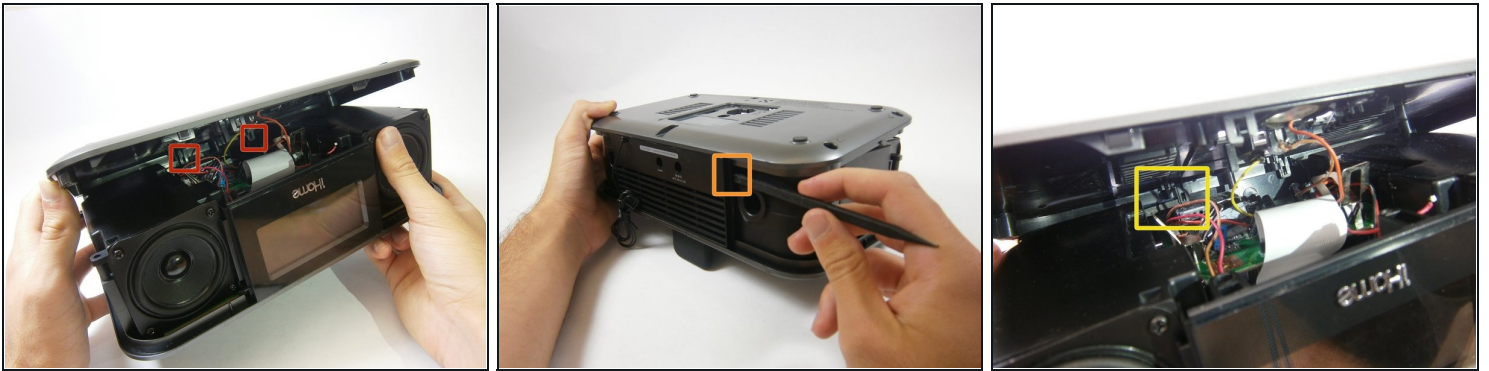
- Lift up the bottom cover. Pull the side panel up first, out, and away from the device.
- The side panels have plastic rings that will need to be lifted up and off the cylinders they are placed around.

Step 7



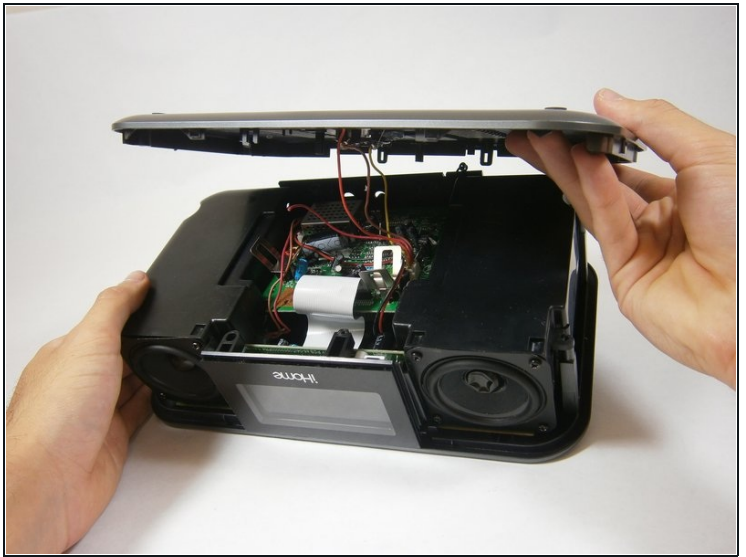
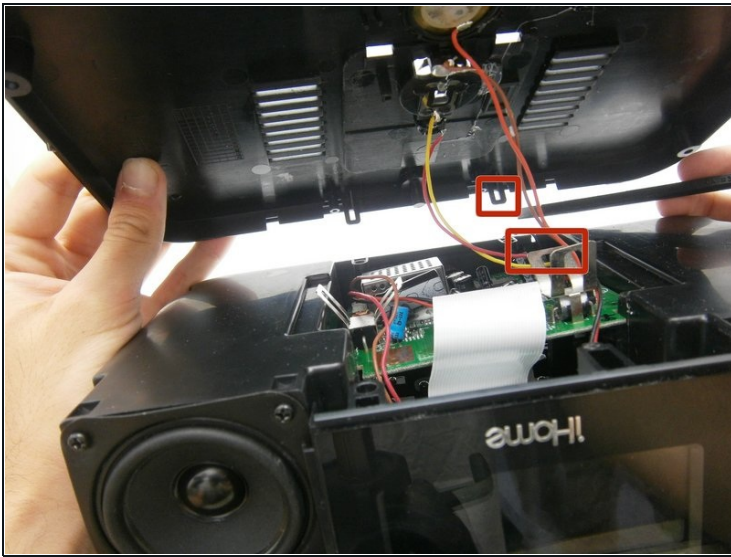
- Apply the same techniques from the previous step to remove the remaining side panel.

Step 8



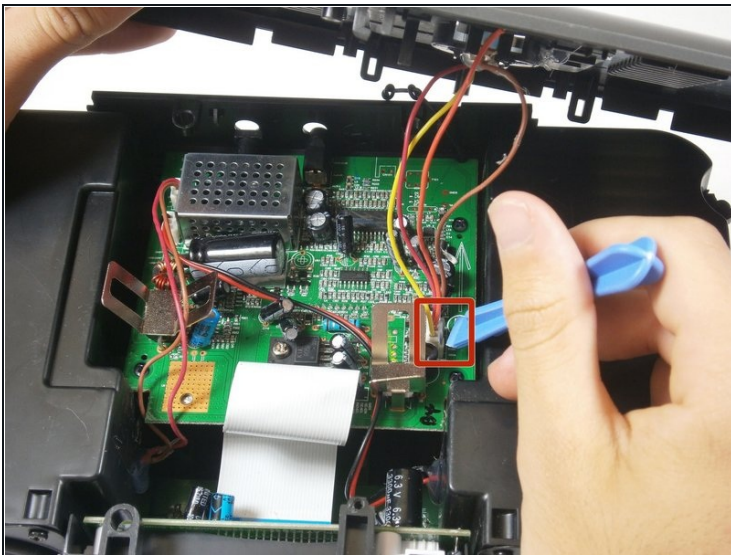
- Locate the two plastic clips holding the bottom and back cover together.
- Which clip you remove first is up to you. Rotate the device 90 degrees either left or right. Insert the flat end of a spudger horizontally between the back speaker and the back cover.
- Place the flat end of the spudger behind one clip and pry it open. This may take repeated attempts.
- ⓘ This is the hardest step because the angle is awkward and the visibility is poor. If possible, have someone hold the device or provide lighting.
- ⓘ Once a clip has been removed, hold the bottom cover open so the clip will not fall back into place. One clip remains to be removed; you are almost there!

Step 9



- Use the same steps to remove the remaining clip.
- ⓘ The bottom cover is still connected to the motherboard by wiring.

Step 10



- Use a plastic opening tool to pry off the white ZIF connector joining the wires to the motherboard.

⚠ Don't pull the wires. Take your time using a plastic opening tool.

To reassemble your device, follow these instructions in reverse order.