



# Apple TV 1st Generation Logic Board Replacement

Replace your Apple TV's 1st Generation logic...

Written By: kelsey8800



# INTRODUCTION

Replace your Apple TV's 1st Generation logic board.

---



## TOOLS:

[TR10 Torx Security Screwdriver](#) (1)  
[T20 Torx Screwdriver Bit](#) (1)  
[TR8 Torx Security Screwdriver](#) (1)  
[Tweezers](#) (1)

---



## PARTS:

[Thermal Paste](#) (1)

## Step 1 — Lower Case



- ★ Flip the Apple TV over so that the bottom of the unit is facing up.
- i You need to remove the rubber base to get access to the screws.
- Starting at one side of the device, use a hairdryer or a heat gun to soften the adhesive holding the rubber base in place.

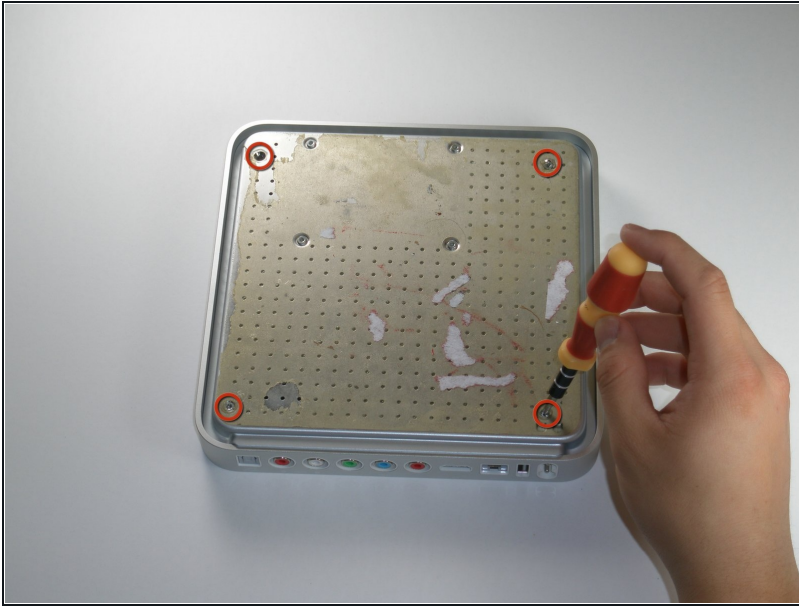
⚠ The rubber base will be hot after heating, take extreme caution while proceeding to avoid personal injury.

- While the adhesive is still warm, peel the bottom of the rubber base upwards to detach it from the metal plate.

⚠ The rubber base can tear if the adhesive hasn't been softened enough.

- Repeat the procedure described above until the rubber base has been completely removed.

## Step 2



- Remove the four T10 Torx screws that secure the lower case to the upper case.

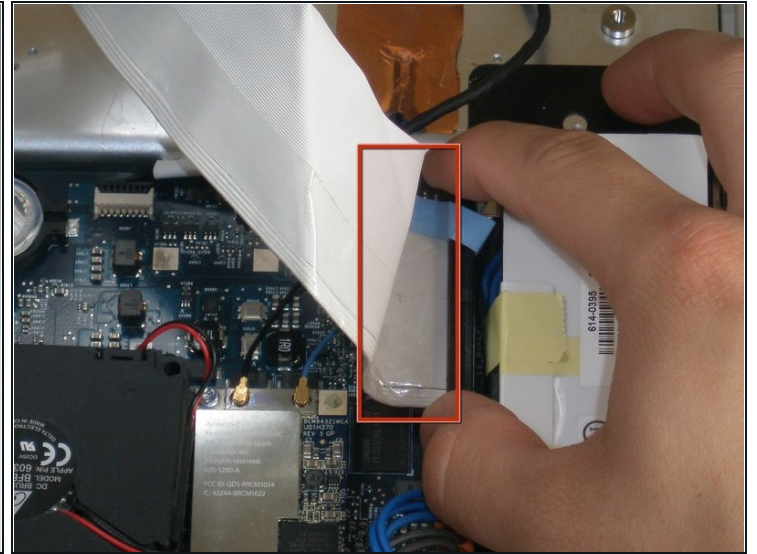
## Step 3



- Carefully lift the lower case from the upper case enough to allow access to the internals of the Apple TV.

⚠ Be aware that the hard drive is physically attached to the lower case and that a ribbon cable runs from the drive to the logic board in the upper case.

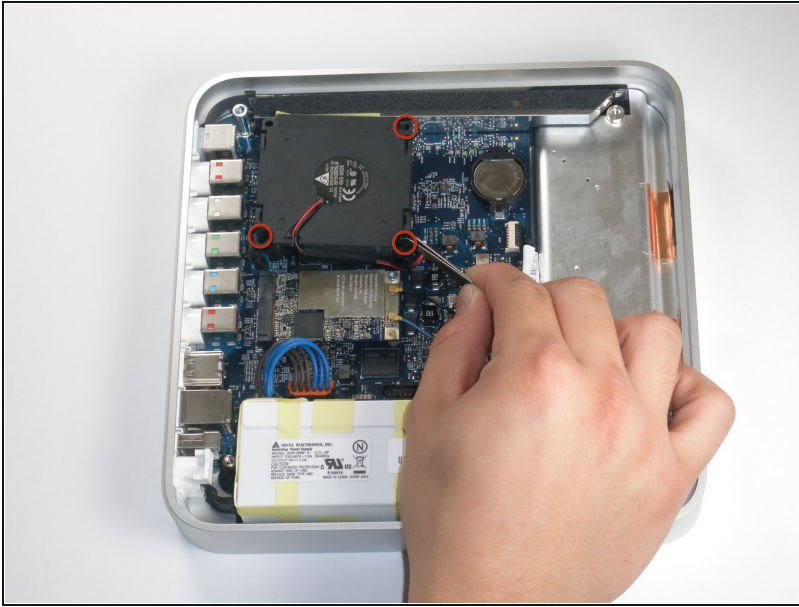
## Step 4



- Carefully pull the hard drive data cable straight up from its socket on the logic board.
- ☑ During reassembly, make sure the hard drive data cable is firmly seated in its socket on the logic board; otherwise, during boot-up you will see a flashing question mark "?".



## Step 5 — Fan



- ❗ The fan is held in place by three rubber posts.
- Using a pair of [tweezers](#), squeeze the top of each post and push the post down into the hole. Repeat for all three posts.
- ❗ During reinstallation, it helps to lubricate the rubber posts. Try weaving a string through the holes in the posts to pull them up through the mounting points.

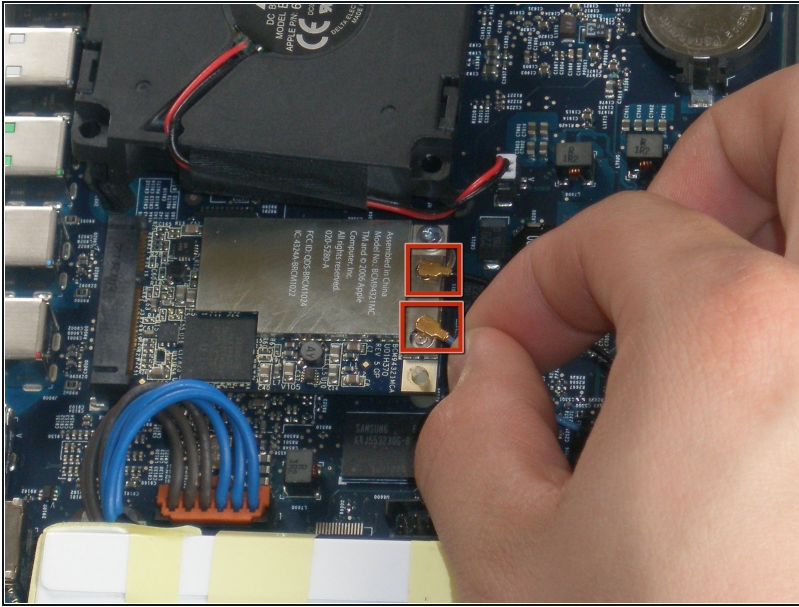
⚠ Do not excessively pull on the posts, as they may rip.

## Step 6



- Using a pair of tweezers, pull the fan connector straight up from its socket on the logic board.
- Lift and remove the fan out of the upper case.

## Step 7 — AirPort Card



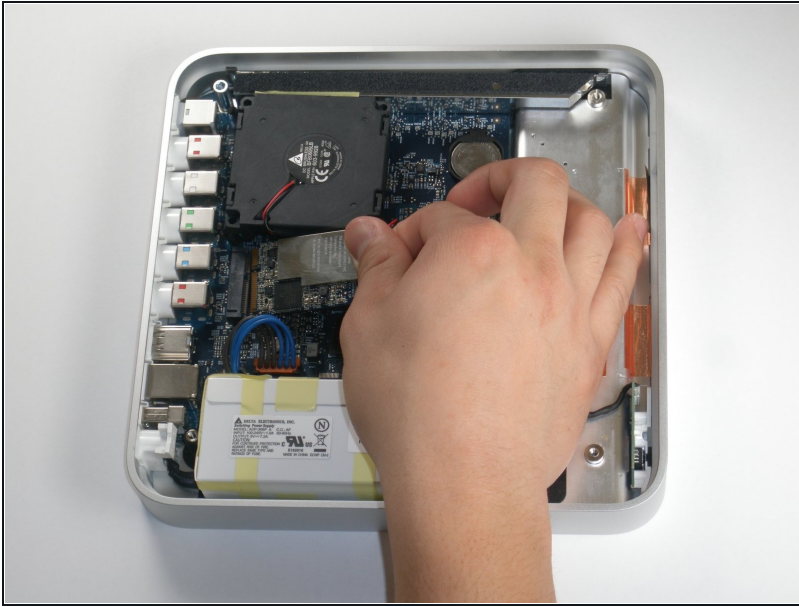
- Pry the AirPort antenna cables straight up from their sockets on the logic board.

## Step 8



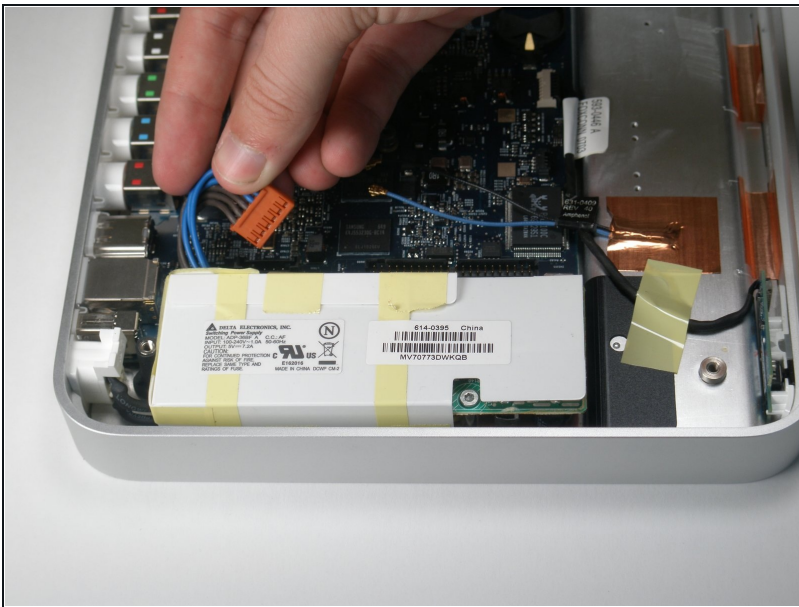
- Remove the single T8 Torx screw securing the AirPort card to the logic board.

## Step 9



- Cautiously lift the AirPort card and pull it straight away. Slide it from its socket on the logic board.

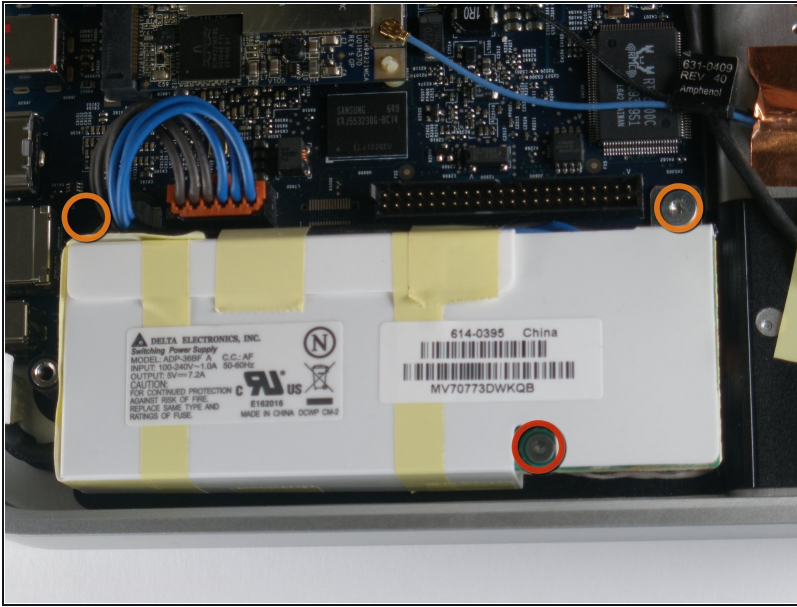
## Step 10 — Power Supply



- Disconnect the power cable straight up from its socket on the logic board.
- ⓘ There is a release tab that must be pushed inwards in conjunction with pulling to release the power cable
- ★ Make sure to pull the connector straight up from its socket and not toward the face of the logic board.



## Step 11



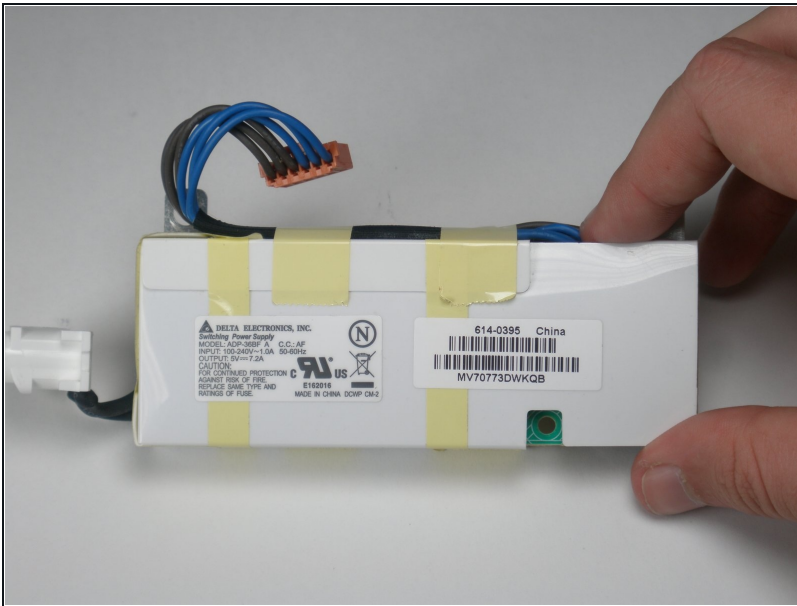
- Remove the following three screws securing the power supply to the upper case:
  - One 4.8 mm T8 Torx screw
  - Two 5.8 mm T8 Torx screws

## Step 12



- Use your finger to push and dislodge the AC power connector inwards, towards the power supply.
- ⓘ This should pop out easily.

## Step 13



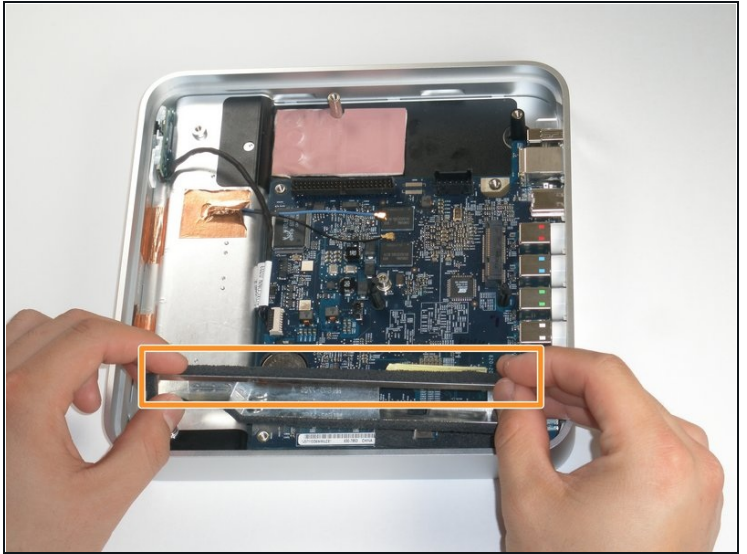
- Power supply remains.

## Step 14 — Logic Board



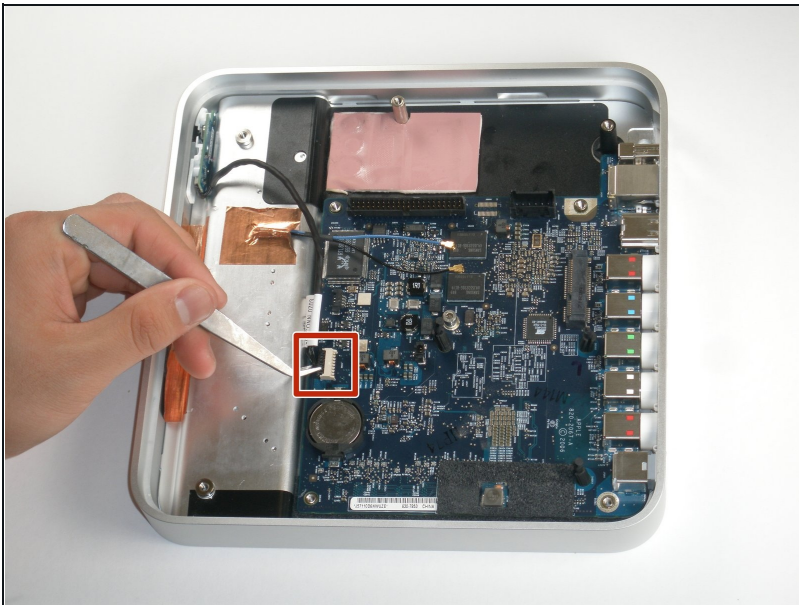
- Remove the T8 Torx screw securing the metal shield to the case.
- ① To remove the T8 screw, you must insert the screwdriver through the access hole in the metal shield. The access hole is located near the PRAM battery.

## Step 15



- Remove the T20 screw located near the digital audio port.
- Lift and remove the metal shield from the upper case of the Apple TV.

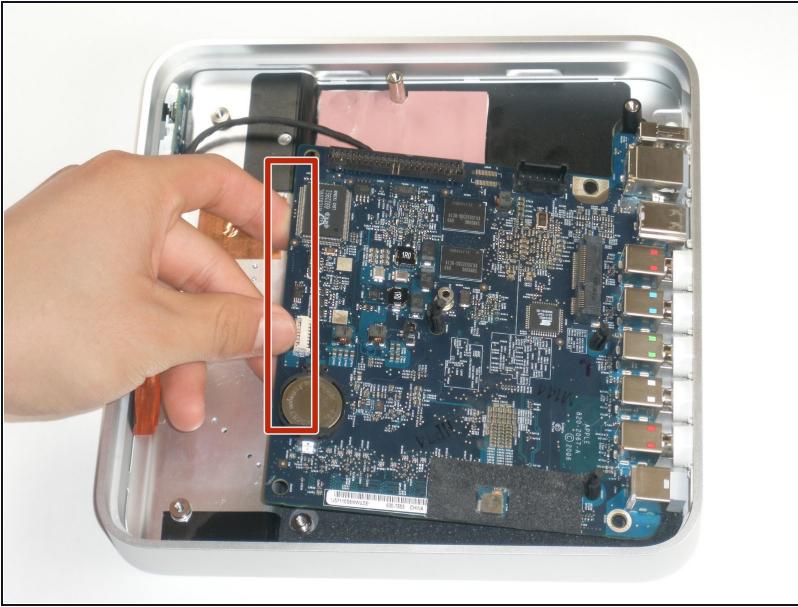
## Step 16



- Use a pair of [tweezers](#) to pull the IR cable straight away from its socket on the logic board.
- ⓘ Make sure to pull the connector parallel to the face of the logic board. Do not pull the connector straight up.



## Step 17



- Lift the left edge of the logic board (nearest the PRAM battery) upwards and slide it out of the case, away from the ports.

⚠ Be careful not to damage the ports when sliding the logic board out of case.

- The logic board remains.

---

To reassemble your device, follow these instructions in reverse order.