



Toshiba Satellite A105-S4284 RAM Replacement

How to replace Toshiba Satellite A105-S4284 RAM

Written By: pfedigan



INTRODUCTION

This guide will help you replace Toshiba Satellite A105-S4284 RAM. RAM allows memory to be accessed directly in a random order. You might need to replace a RAM if your computer shuts down abruptly, your computer performance is low quality, or the computer fails to install new programs.



TOOLS:

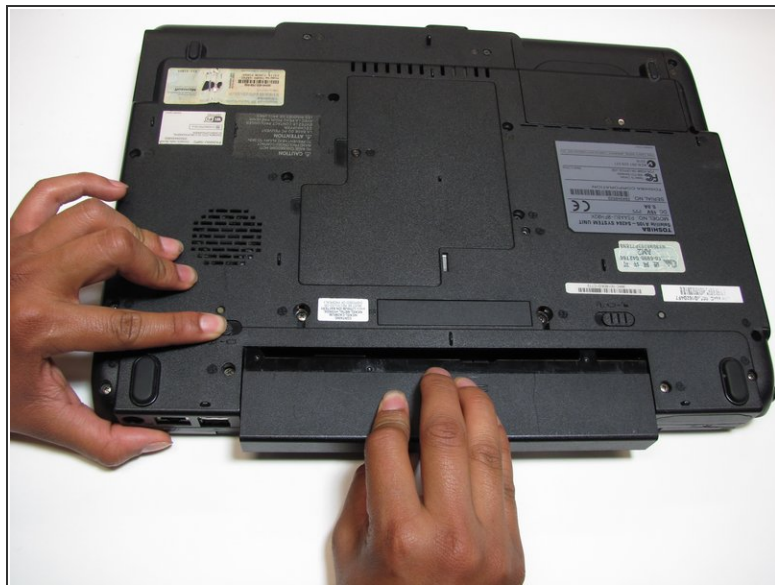
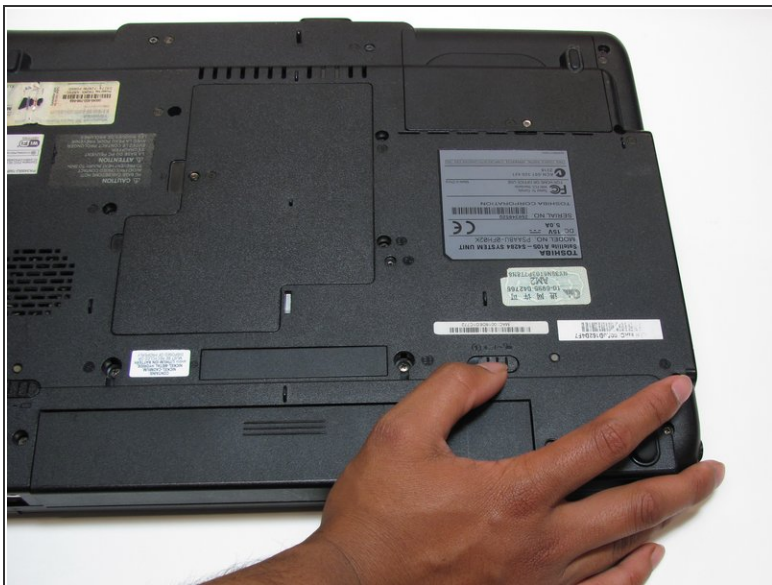
- [Phillips #1 Screwdriver](#) (1)




PARTS:

- [PC2-5300 2 GB RAM Chip](#) (1)

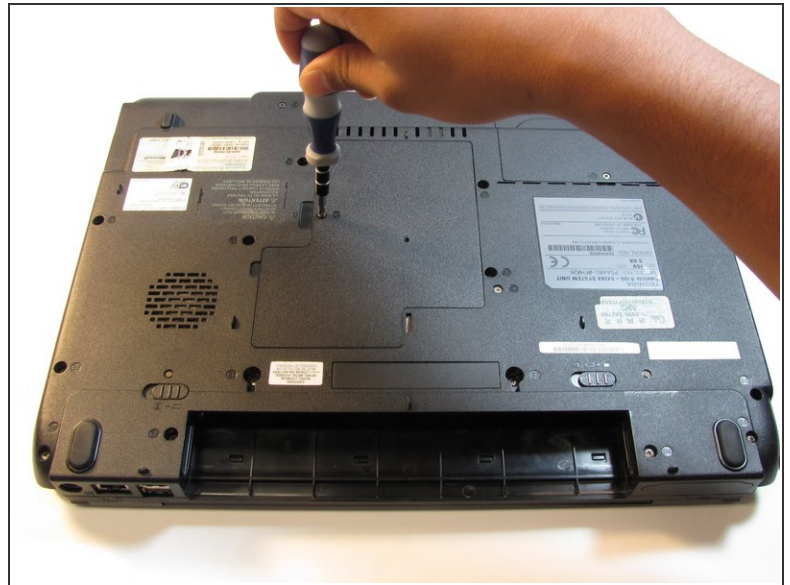
Step 1 — Battery



 Make sure your computer is turned off and the computer is not plugged in.

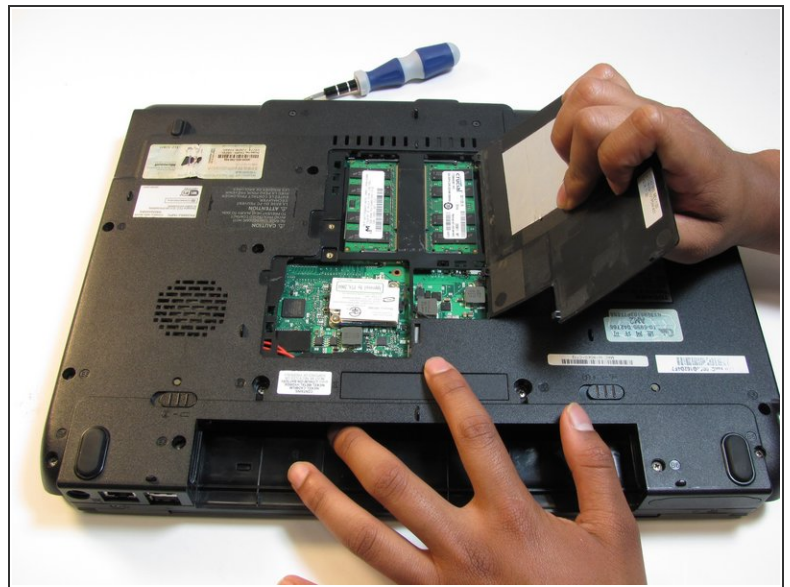
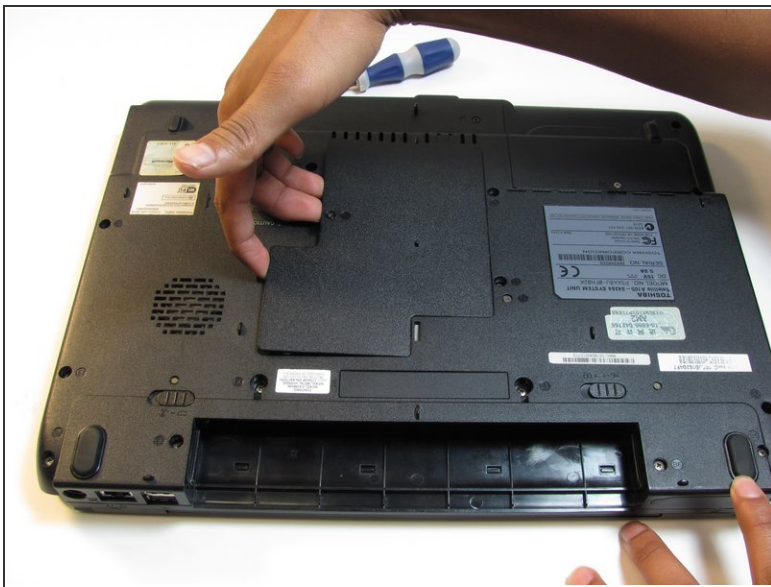
- Turn your laptop upside down, and slide the right release tab outward.
- Using your left hand, hold the left release tab towards the left side and then pull the battery out.

Step 2 — RAM



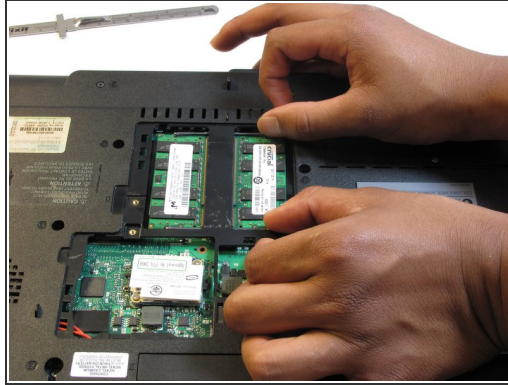
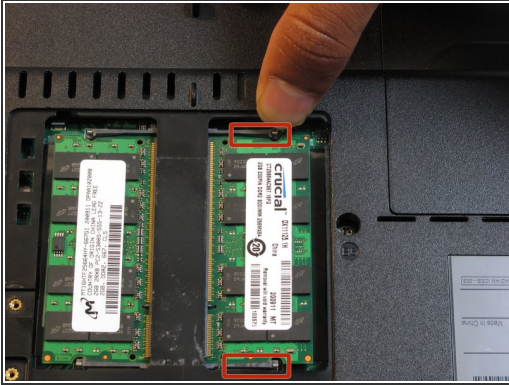
- Loosen the screw located on the cover of the RAM using Phillips #1 screwdriver.
- ⓘ You will not be able to remove the screw from the panel as it is designed to stay in the panel.

Step 3



- With your fingers, carefully remove the middle panel by lifting the edge with the indent.

Step 4



- Using your fingers, release the tabs on both ends of the RAM.
- Pull the RAM out.
- ⓘ The other RAM is released in the same manner.

To reassemble your device, follow these instructions in reverse order.