



# Sony Clie PEG-NR70 Battery Pack Replacement

Intall a new new battery pack for your device

Written By: Courtney



## INTRODUCTION

If your device is not holding a charge or simply will not turn on, it is possible that you need to replace the battery. This easy guide will take you through the necessary steps in order to remove the battery so you may install a new one.



### TOOLS:

- [Phillips #00 Screwdriver](#) (1)



### PARTS:

- [Rechargable Lithium Polymer Battery 3.7V 1200mAh](#) (1)

## Step 1 — The Case



- Unscrew the 1.9mm screw located at the top of the device with a Phillips #00 screwdriver.

**i** It may be helpful to set up a piece of paper to keep track of where removed screws came from.

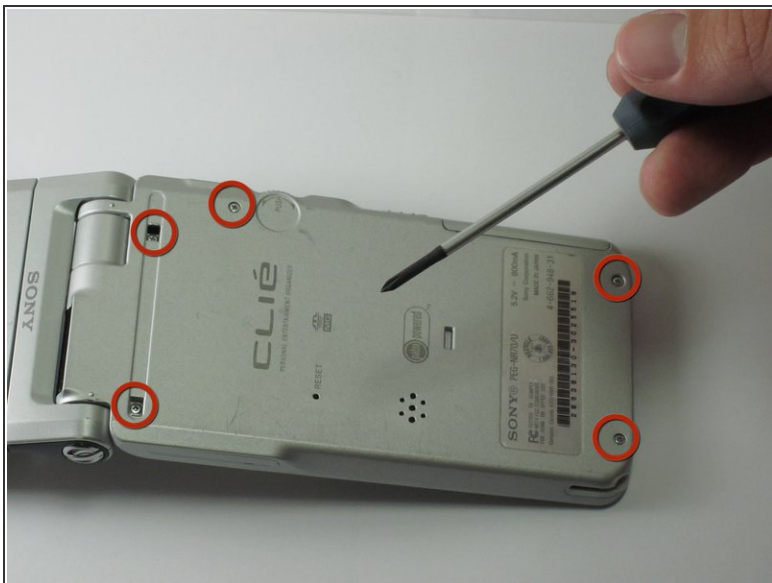
## Step 2



- Unscrew the 2.5mm screw located on the left side of the device with a Phillips #00 screwdriver.



### Step 3



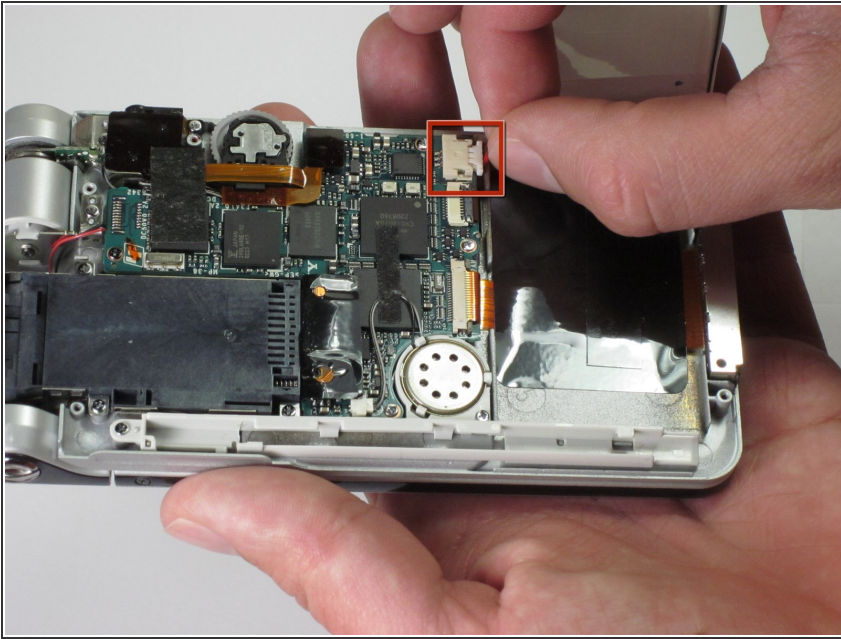
- Unscrew the five 2.5mm screws on the back panel with a Phillips #00 screwdriver.
- Remove the back panel by lifting it away with your hands.

### Step 4 — Battery Pack



- Pull up on the black tab on the battery pack to reveal the power cord.

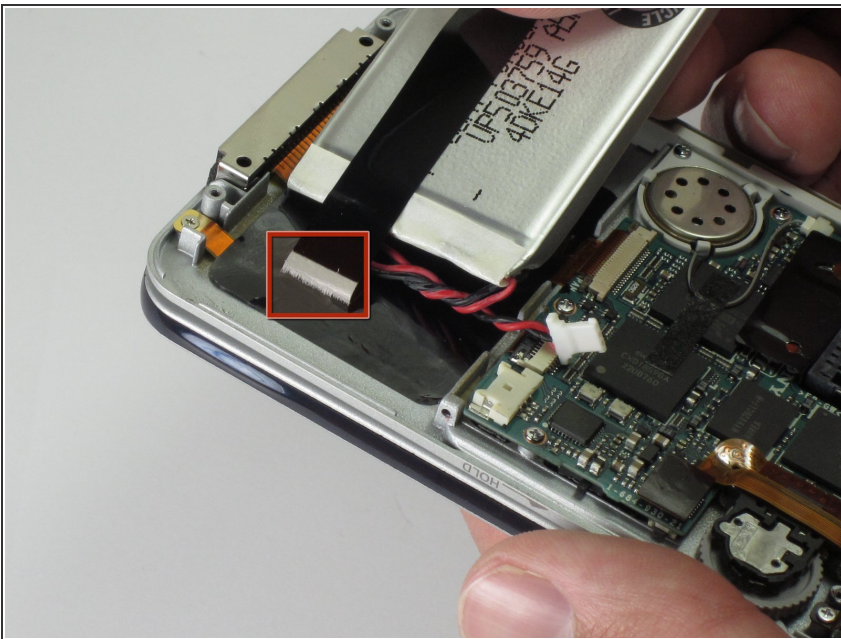
## Step 5



- Disconnect the battery pack from the motherboard by unplugging the power cables. Gently pull the wire toward the bottom of the device.

⚠ Be careful to not tear the cables!  
They are very thin.

## Step 6



- Gently peel back the adhesive to completely disconnect the battery pack from device.

To reassemble your device, follow these instructions in reverse order.