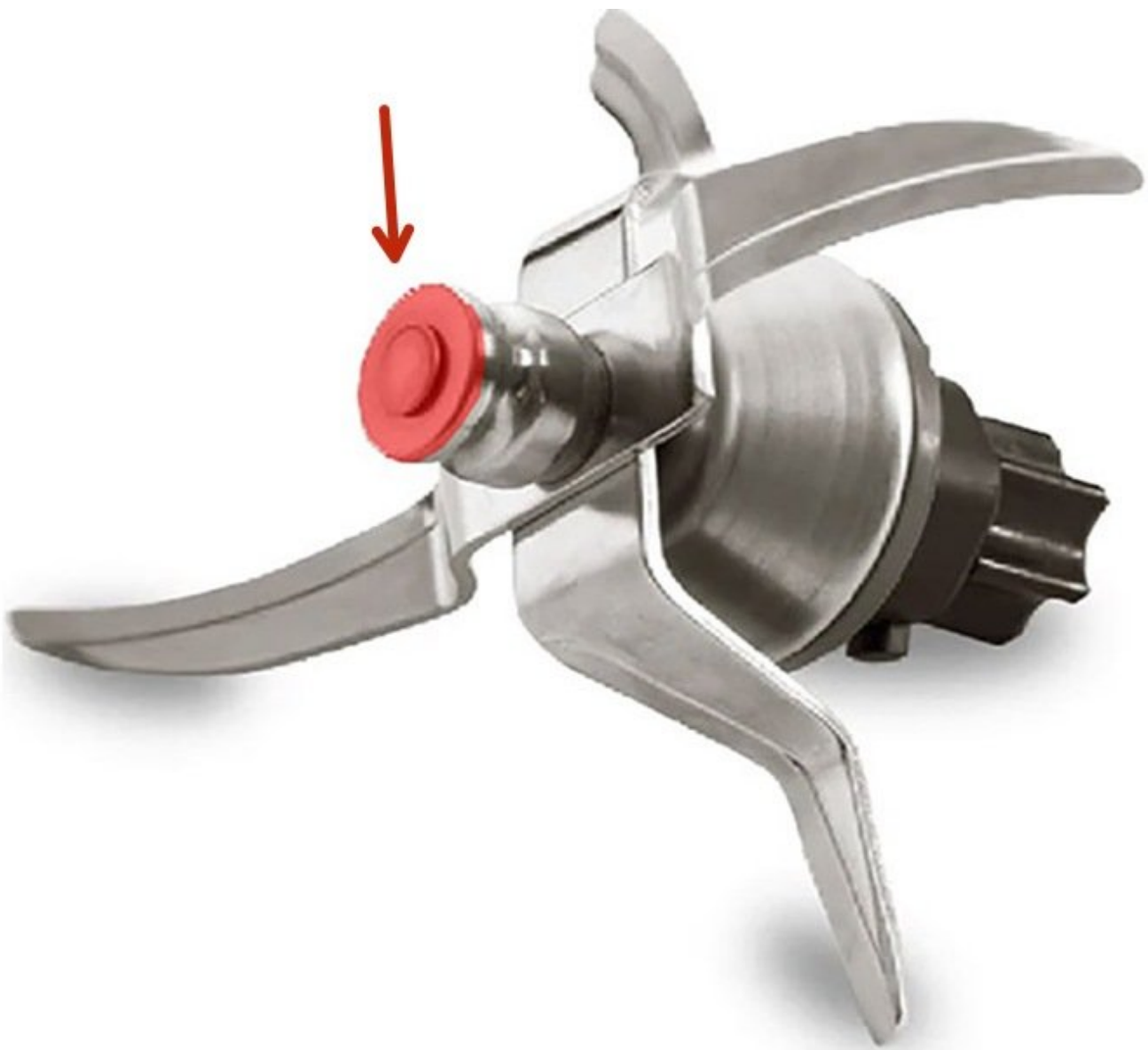




Stripped Thermomix TM31 Blade Assembly Repair

This guide shows how to fix the Thermomix TM31 blades back to their shaft if they become loose or free-spinning (or "stripped").

Written By: Sam



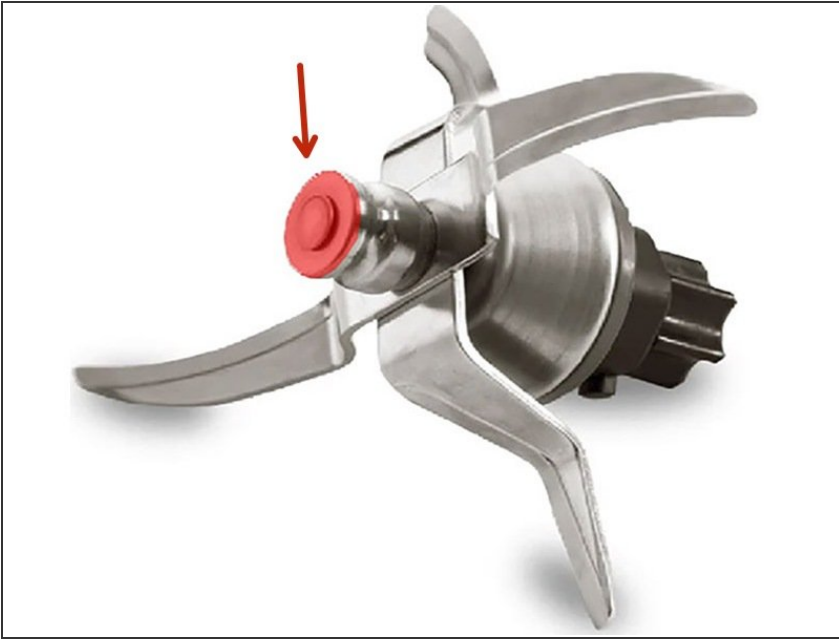
INTRODUCTION

One problem with the Thermomix TM31 is that after a while the blade assembly becomes loose or free-spinning (aka "stripped"). This guide shows how to fix that.

TOOLS:

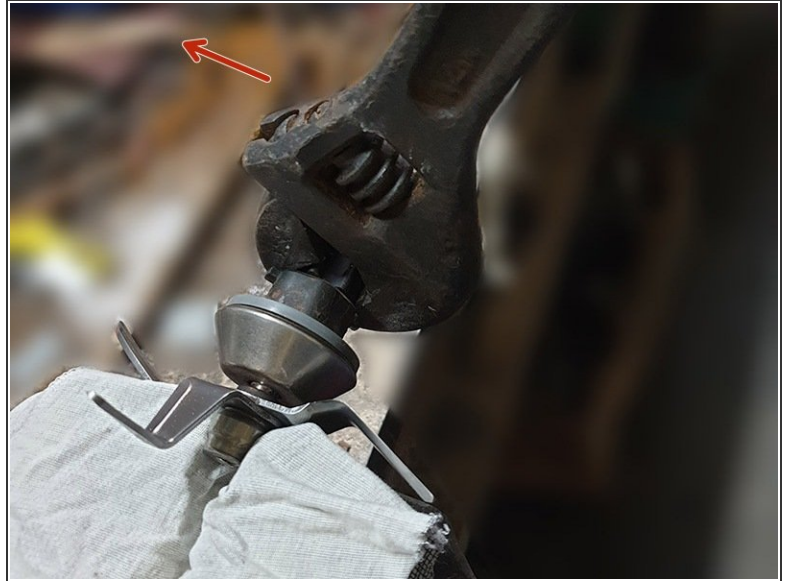
- [vice heavy duty](#) (1)
 - [Adjustable Wrench](#) (1)
 - [Metal File](#) (1)
 - [Angle Grinder](#) (1)
 - [Hammer](#) (1)
 - [Pin Punch](#) (1)
-

Step 1 — Remove top 2mm of metal from the head



- First make sure the blade assembly is removed from the Thermomix.
 - Next file (or angle grind) away approximately 2mm of metal from the top of the blade shaft head (the metal to be removed is highlighted in red in this picture).
- ⓘ You want to remove enough metal so that the 6mm shaft is visible from the top of the head..

Step 2 — Clamp head in vice and unscrew head



- ⓘ Note the head shown here has already been worked on a bit and may appear a bit different.
- Clamp the head tightly into a vice (also use a piece of cloth or two in between to minimize damage to the head).
- ⓘ The head has a left handed thread (opposite to what is normally used).
- Unscrew the head using a wrench on the base and turn clockwise (left handed thread) until the head is detached. If there is considerable resistance then go back to the previous step and remove more metal from the head.

Step 3 — Dissassembled blade shaft assembly and inspect for damage



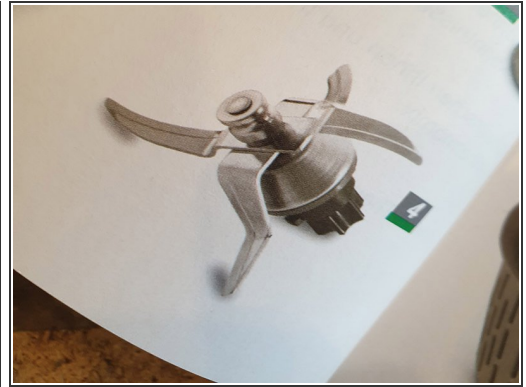
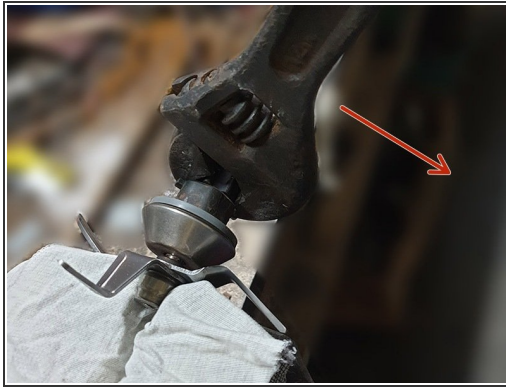
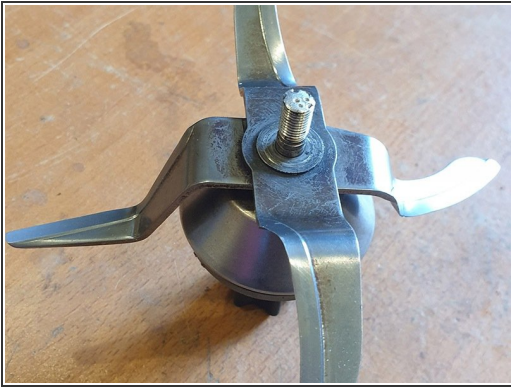
- Once the head is loosened and removed take apart the blade assembly. Note the blade orientation.

Step 4 — Remove 1mm off the top off the head



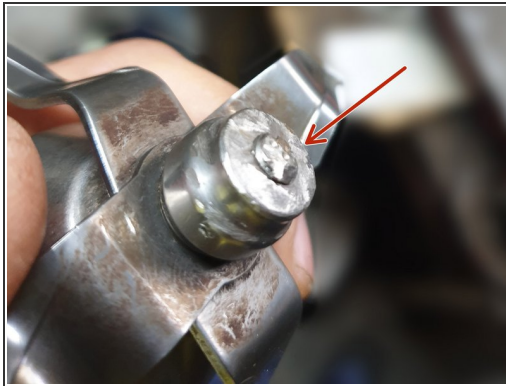
- Next remove 1mm of metal (either through filing or angle grinding) from the top of the head (area to be removed highlighted in red).
- ⓘ This will allow the shaft to stick through when reassembled, so you can peen it over to lock everything together.

Step 5



- Reassemble blade shaft together in same order, taking note that the blades are in correct orientation (it is possible to put them upside down by mistake).
- Clamp the head portion in a vice (with cloth) and tighten with adjustable spanner in an anticlockwise direction (left-handed thread) until tight. Do not overtighten as you risk stripping the base. The assembly should self tighten once back in the thermomix anyway.

Step 6 — Peen over shaft end so that it holds down assembly



- ⓘ This step may require two people - one to hold the assembly and the other to peen the threaded shaft end over.
- Make sure to rest the assembly down against a surface that is in contact with the metal shaft underneath (we used a 3mm rod clamped in a vice).
- Next peen over the 1mm exposed end of the threaded shaft so that it holds the head down (and rest of assembly).

Step 7 — Wash final assembly and you're done!



- Wash the assembly with detergent and water to remove any dust, grease or grime. The repair is now complete!

With the blade assembly fixed you can now reattach it to your TM31 Thermomix.