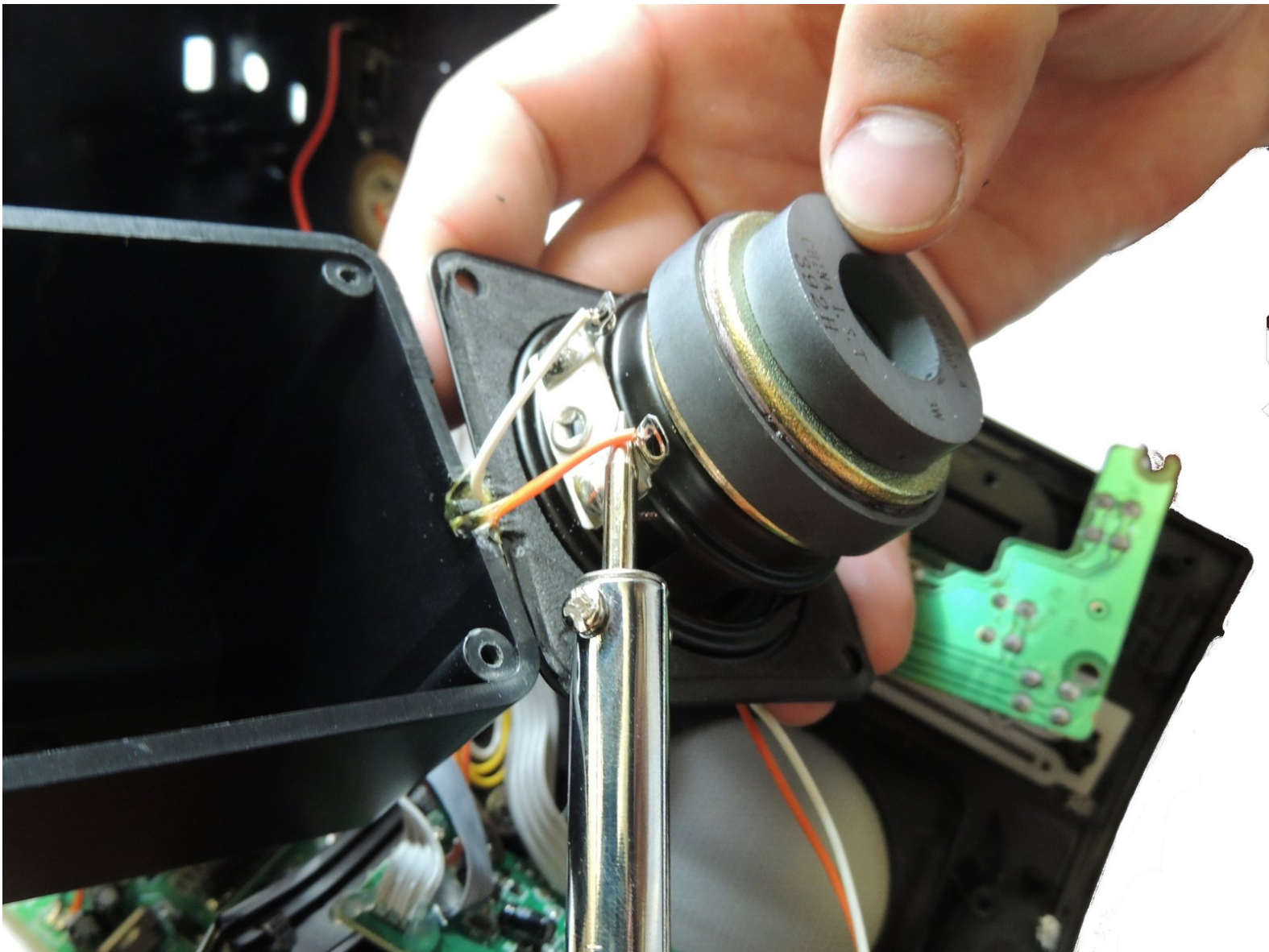




iHome IH11 Speaker Replacement

Replace the damaged speaker in your iHome IH11 for better sound quality.

Written By: Courtney Steinberg



INTRODUCTION

This will show you how to install a new speaker into your iHome. For help troubleshooting click the link to our troubleshooting page [iHome IH11 Troubleshooting](#).

TOOLS:

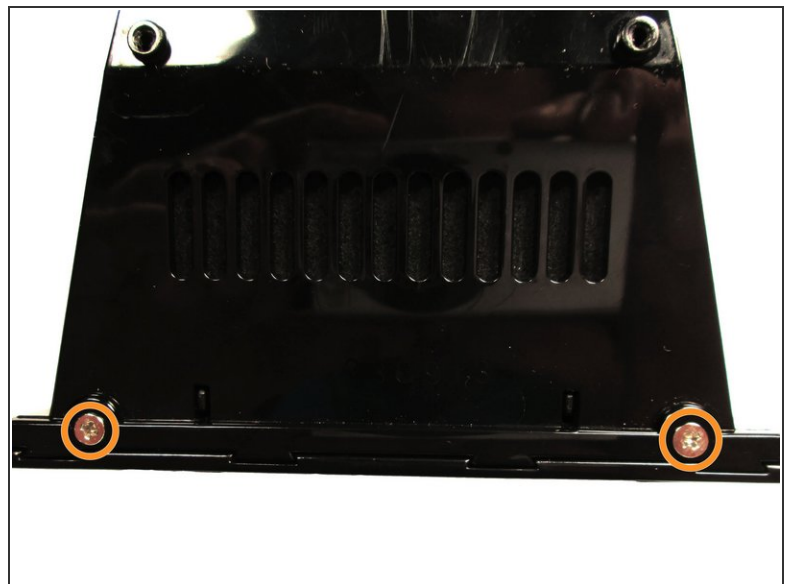
- [Phillips #1 Screwdriver](#) (1)
 - [Soldering Workstation](#) (1)
-

Step 1 — Outer Case



- Unscrew the two 9.0 mm screws with a Phillips #1 screwdriver.
- Remove the translucent bottom case.

Step 2



- Remove the two 9.0mm screws on the back of the iHome with a Phillips #1 screwdriver.
- Repeat the previous step for the two 9.0mm screws on the bottom.

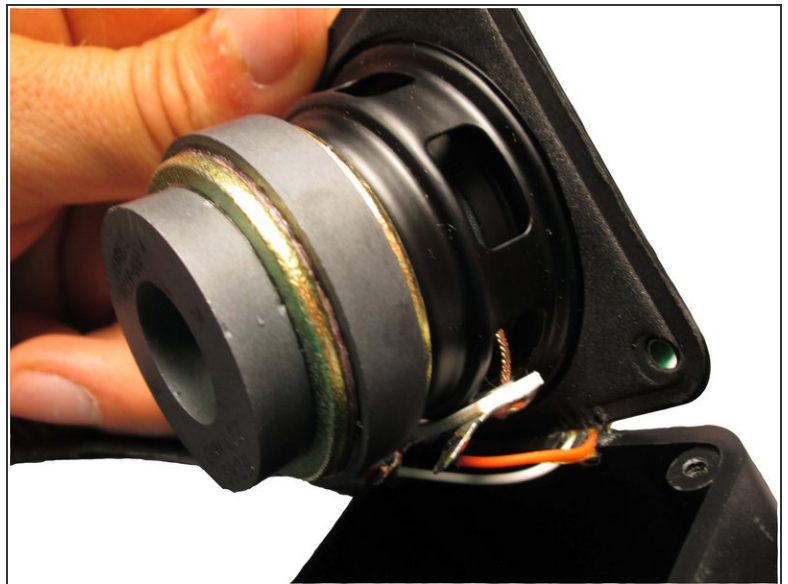
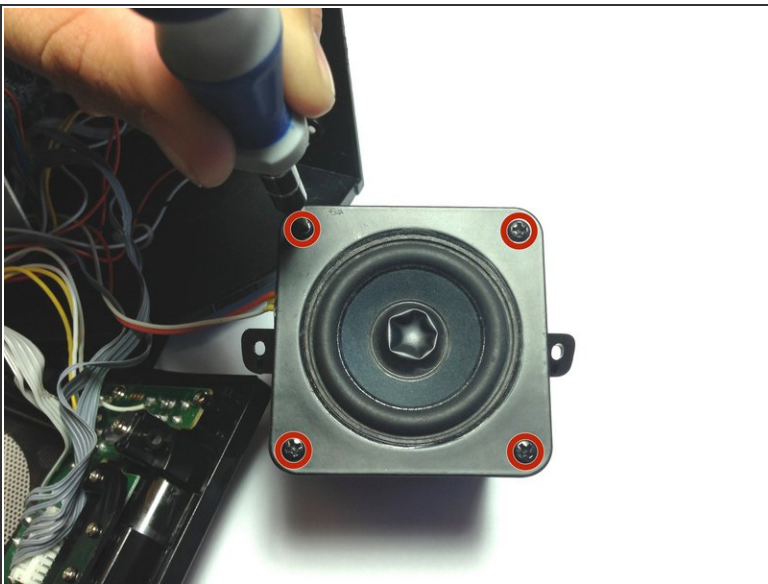
⚠ Carefully slide the back cover off. There are wires connected to the back cover.

Step 3



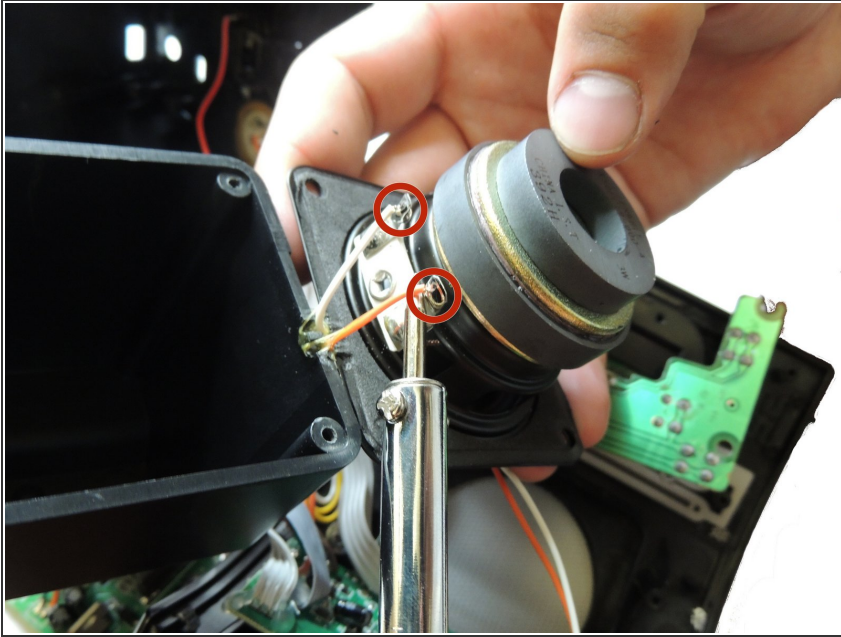
- Remove the two 12.0mm screws holding the speaker to the iHome with a Phillips #1 screwdriver.

Step 4



- Remove the four 12.0mm screws on the face of the speaker with the Phillips #1 Screwdriver.
- Carefully lift speaker out of its casing.

Step 5



- Unsolder the two wires that connect to the speaker.

To reassemble your device, follow these instructions in reverse order.