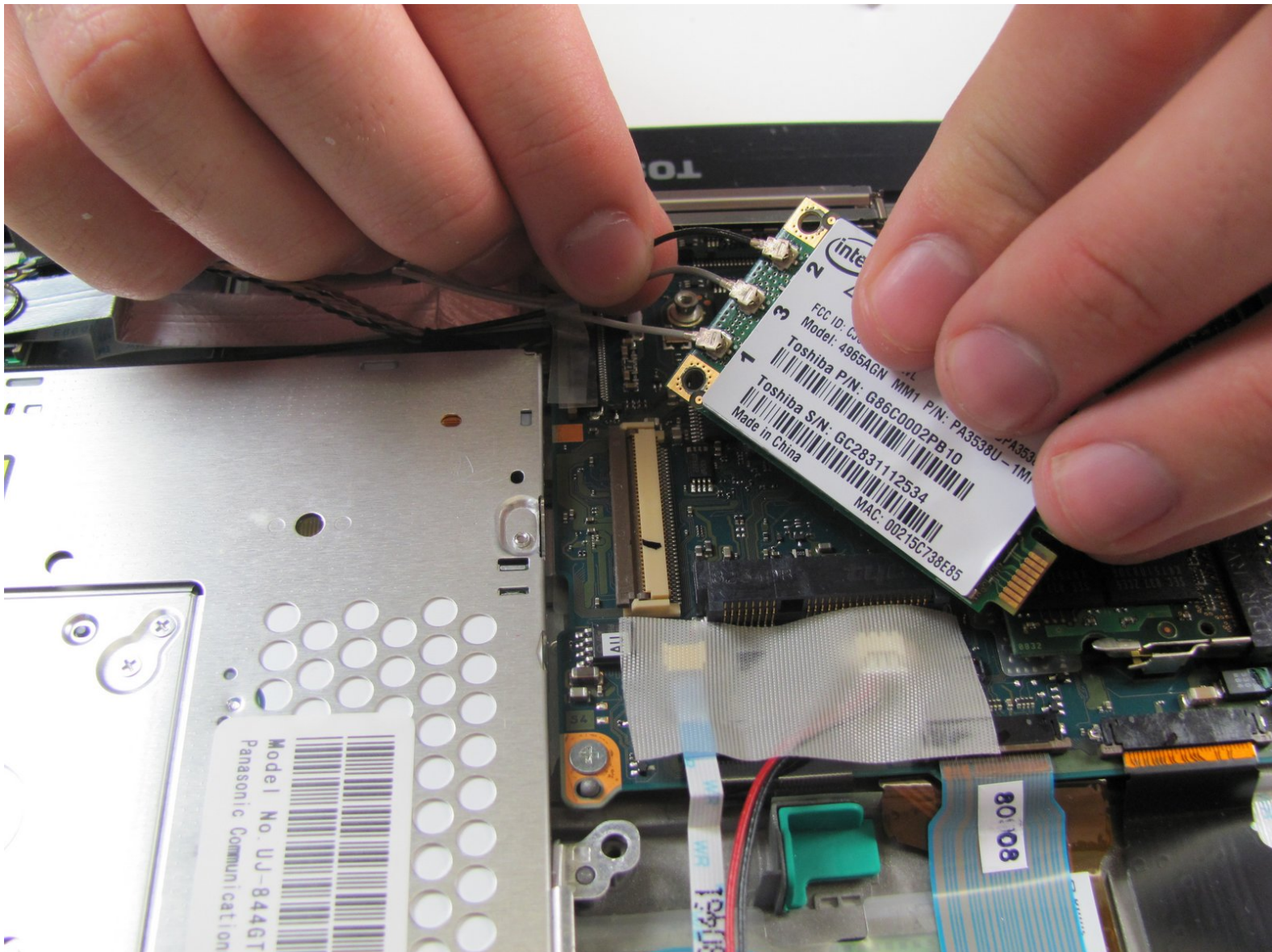




# Toshiba Portege R500 Wi-Fi Card Replacement

In this guide we will replace the internal Wi-Fi card.

Written By: JRJones

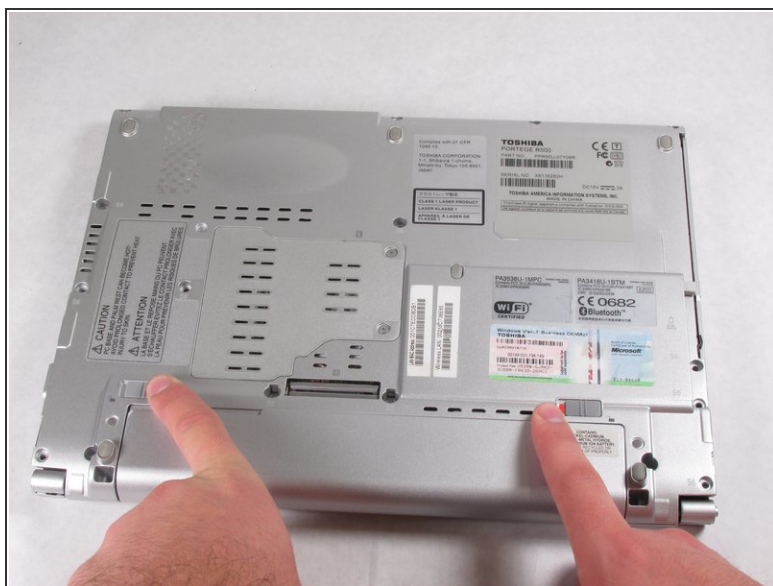





## TOOLS:


- [Phillips #00 Screwdriver](#) (1)
-

## Step 1 — Battery



 Make sure the device is off to prevent data loss.

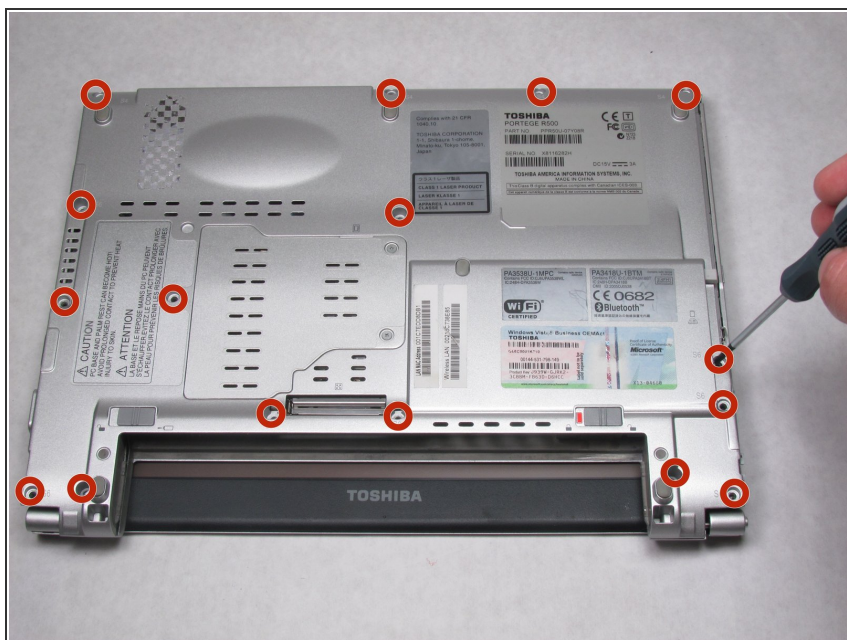
- Slide both latches to the unlocked position to release the battery.

 Switch the latch on the right to reveal red. The latch on the left needs to be held.

- Pull the battery toward you while holding the left latch.

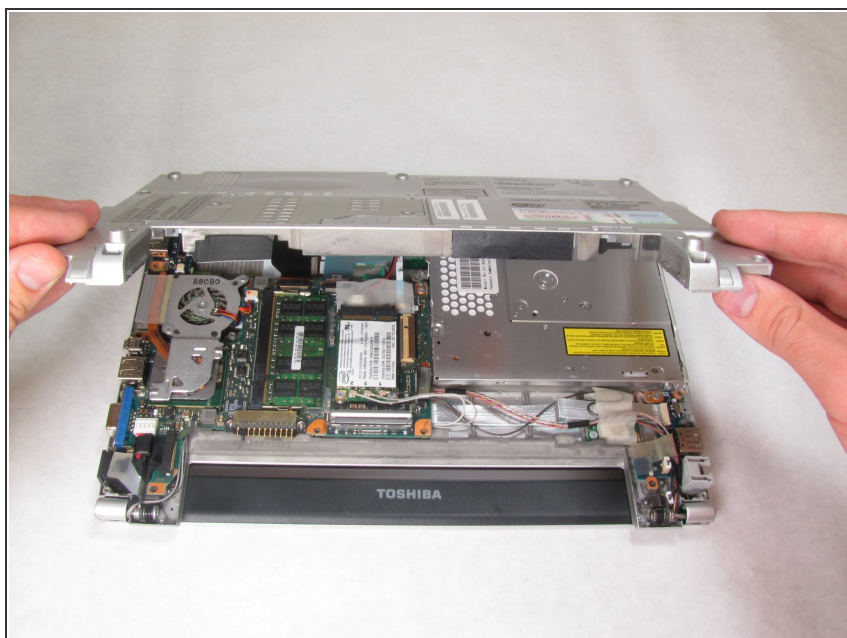


## Step 2 — Wi-Fi Card



- Remove the sixteen screws at the locations shown with the Phillips 00 screwdriver.

## Step 3



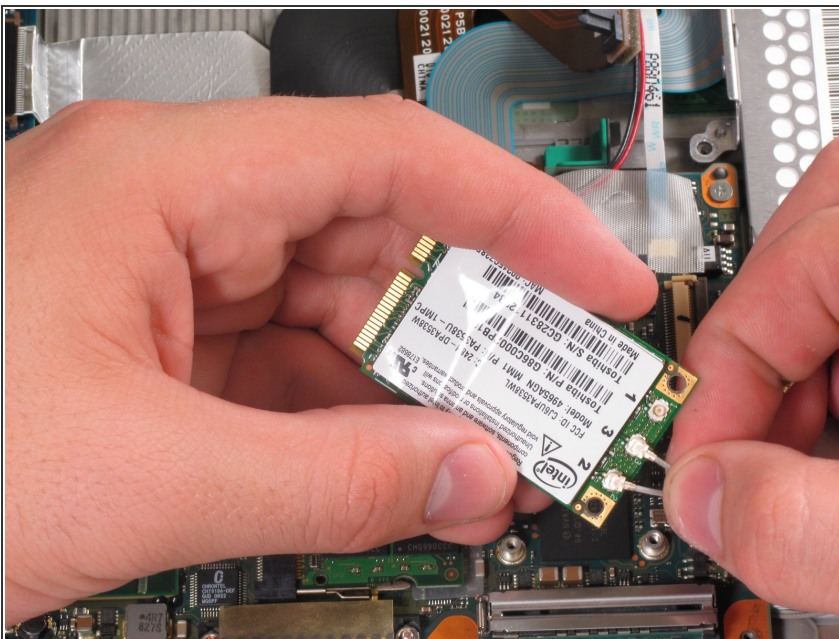
- Pull up on the back casing and remove it, revealing the Wi-Fi card.

## Step 4



- Unscrew the two 3.5 mm screws from the Wi-Fi card with the Phillips 00 screwdriver.
- Pull the Wi-Fi card towards the battery slot to release it.

## Step 5



- Remove the three wires from the Wi-Fi card by pulling them straight up and off.
- The Wi-Fi card should now be free of the laptop.

⚠ When removing the wires be sure to remember which wire came from which port, consider marking them so that you can remember.

To reassemble your device, follow these instructions in reverse order.