



# Acer Nitro AN515-55 RAM Replacement

This guide will help you add or replace the RAM in your Acer Nitro AN515-55.

Written By: Samir Patel



## INTRODUCTION

When purchasing gaming computers, the amount of RAM is an important aspect to factor in. Computers with lots of RAM often cost a lot of money. The Acer Nitro AN515-55 comes with 8GB of RAM. For gaming, 8GB might not be sufficient enough to run many newer, high-definition games. Luckily, this computer model comes with an additional RAM slot. Adding your own RAM to your computer can save you hundreds of dollars without having to sacrifice performance.

Before you start, make sure you wash your hands. This is an important step because oils and dirt can harm your computer's hardware. You must also make sure you ground yourself before opening up the rear panel of your computer. Static buildup can seriously harm your computer's hardware, sometimes even making it unusable. Guides on how to ground yourself can be found on Youtube.

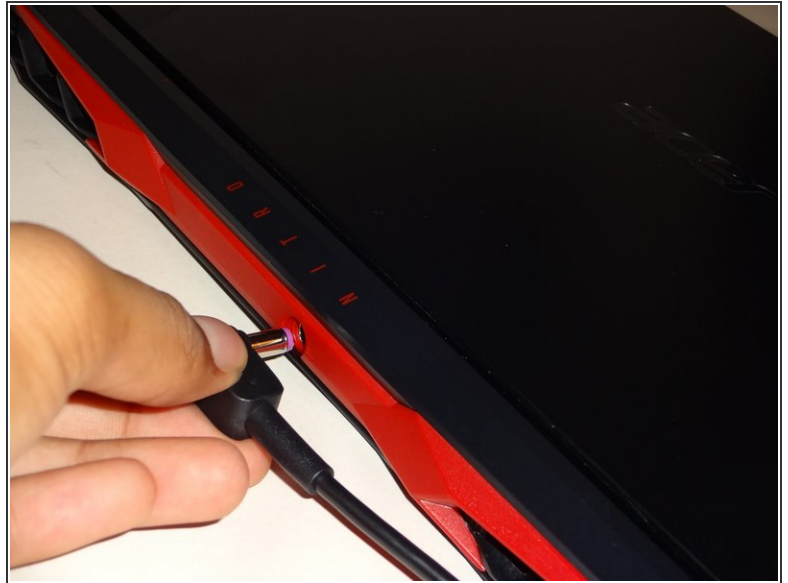
---

### TOOLS:

- [Phillips #0 Screwdriver](#) (1)
  - [iFixit Opening Picks \(Set of 6\)](#) (1)
-



## Step 1 — RAM



- Shut off the computer and unplug any sources of power, including the charger.
- Unplug any other devices that may be plugged into the computer.

## Step 2



- Remove eleven screws from the back of the laptop using a Phillips #0 screwdriver.

## Step 3



- Slide a plastic opening pick between the rear panel and laptop body to remove the rear panel.

**⚠ Using a metal prying tool to open up the rear panel of your computer may damage the plastic case.**

## Step 4



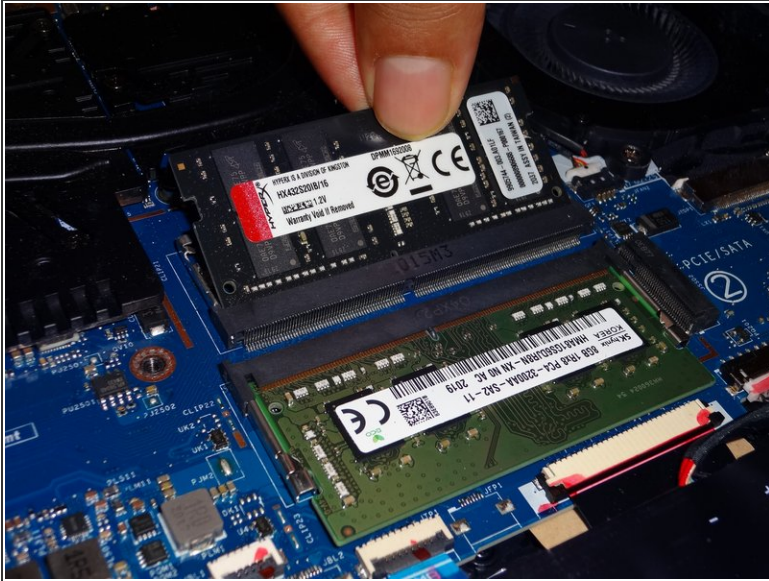
- Using your fingers, disconnect the battery pin by pulling back on the two tabs located at the ends of the pin.

**i** You do not need to take the entire battery out, just the pin.

**⚠ Make sure you have grounded yourself before touching any of your computer's components.**



## Step 5



- Slide the RAM stick into the RAM slot at about a 45 degree angle.
- Push the RAM stick down until you hear a click.
- ❗ You do need to apply a bit of pressure when pushing down on the RAM.

## Step 6



- Reconnect the battery pin by reinserting the connector back into its slot.

## Step 7



- Place the rear panel back on the computer.
- Screw the panel back in.
- ① You may need to push down on the panel to lock the panel back in.

Once your rear panel is properly put back on, check if your RAM has been installed correctly. Power on your computer. This may take longer than usual because the computer is identifying the new piece of hardware. After your computer has booted up, go to About System (Settings > System > About). Under the “Installed RAM” portion of the page, you will see the amount of RAM your computer has installed. If this amount is correct, you have successfully installed your RAM.