



Black and Decker G48TD Disassembly

This guide will show you how to disassemble the Black and Decker G48TD into its individual components.

Written By: Connor White



INTRODUCTION

Full Device Name: Black and Decker 3-in-1 Grill - Griddle - Waffle Maker

Model Name: G48TD

This guide aims to disassemble the device into its fundamental components.

Safety warnings:

- Do not operate on device while it is receiving power
- Be careful when bending sharp metal tabs

No special skills are required for following this guide



TOOLS:

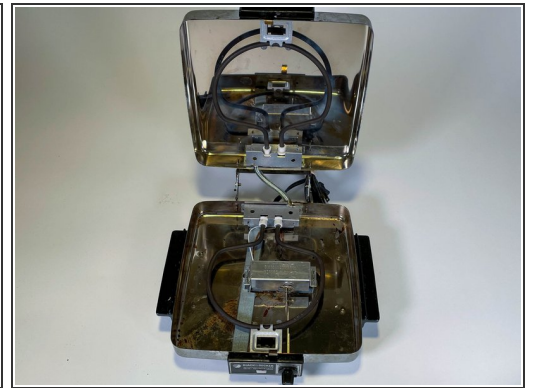
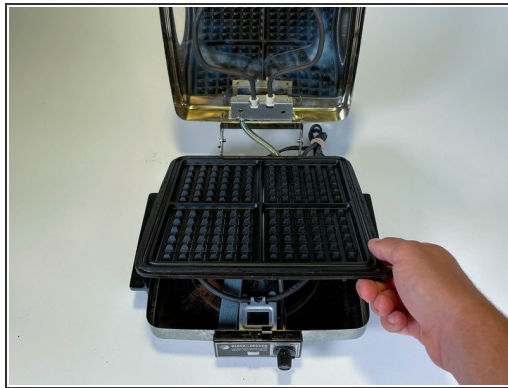
- [Large Needle Nose Pliers](#) (1)
 - [Flathead 4 mm Screwdriver](#) (1)
-

Step 1 — Black and Decker G48TD Disassembly



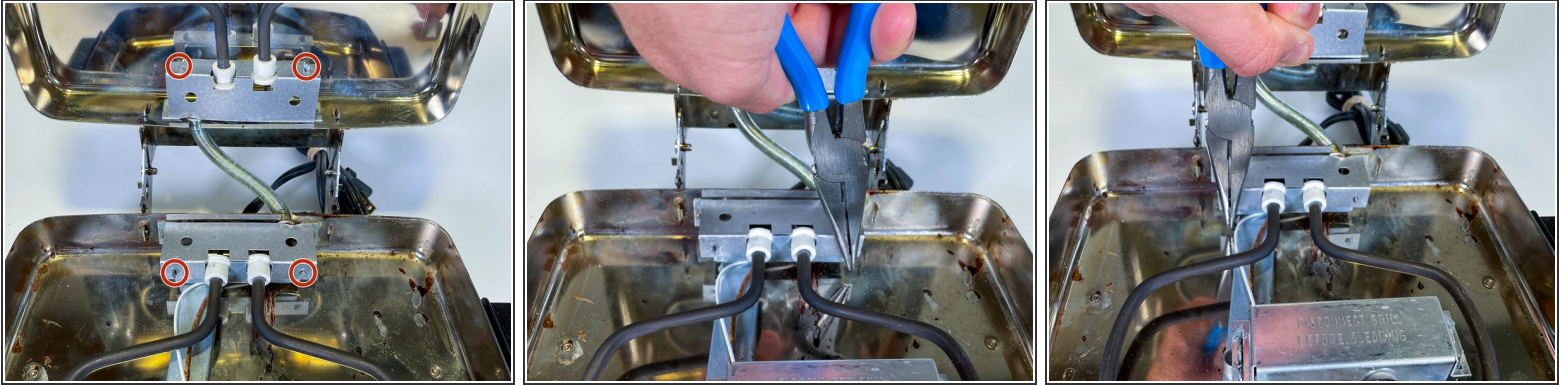
- Open the grill.

Step 2



- Remove the top and bottom griddle plates.

Step 3



- Use a pair of Large Needle Nosed Pliers to twist the metal tabs holding the plate housing the bottom heating element connections and remove the plate.

Step 4



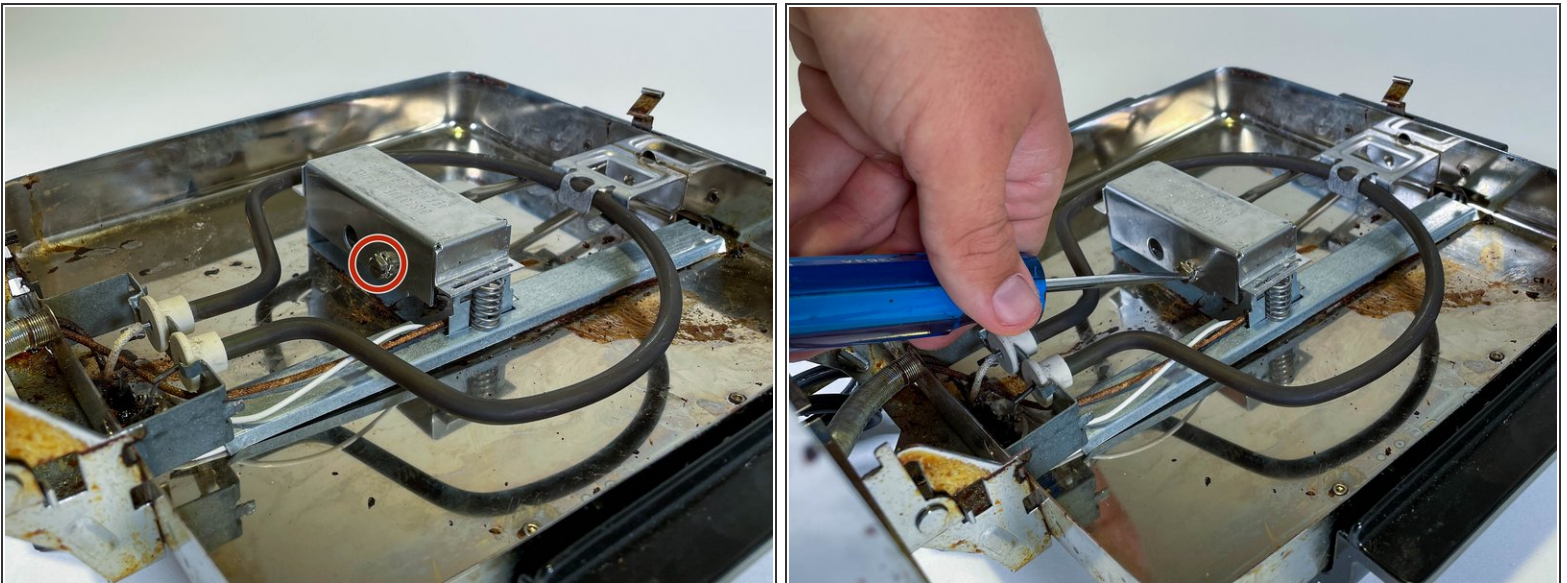
- Use a pair of Large Needle Nosed Pliers to twist the metal tabs holding the plate housing the top heating element connections and remove the plates.

Step 5



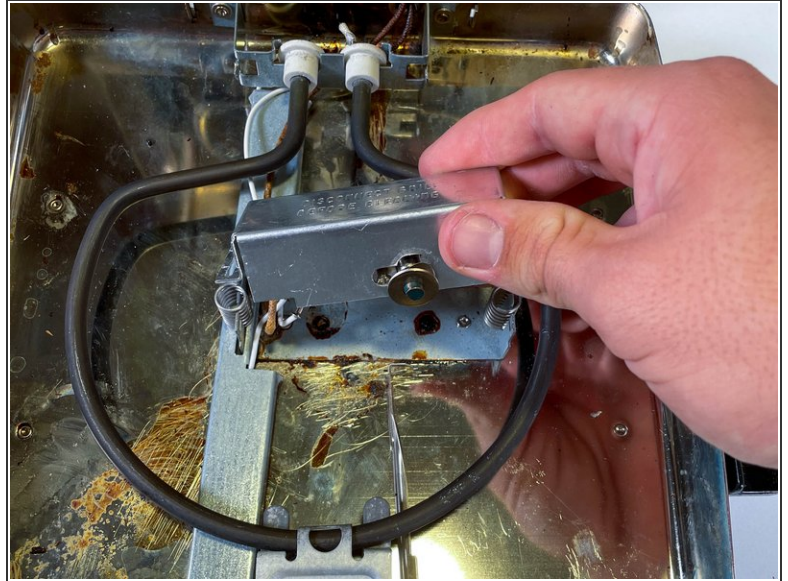
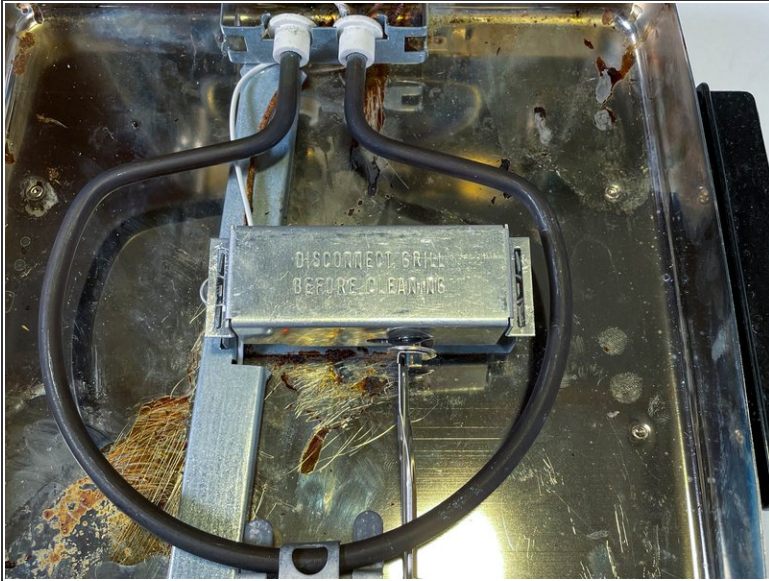
- Use pliers to twist the metal tabs holding down the thermostat housing.

Step 6



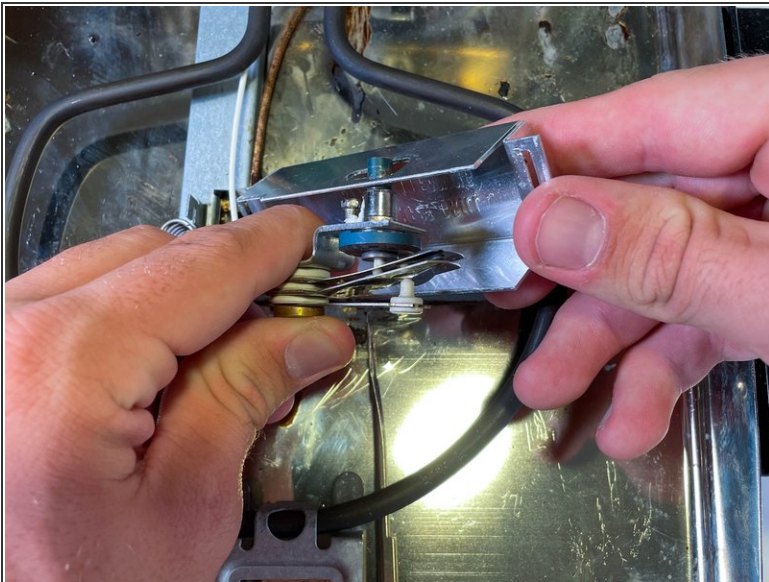
- Use a 4 mm Flathead screwdriver to remove the 11.4 mm screw in the back of the thermostat housing.

Step 7



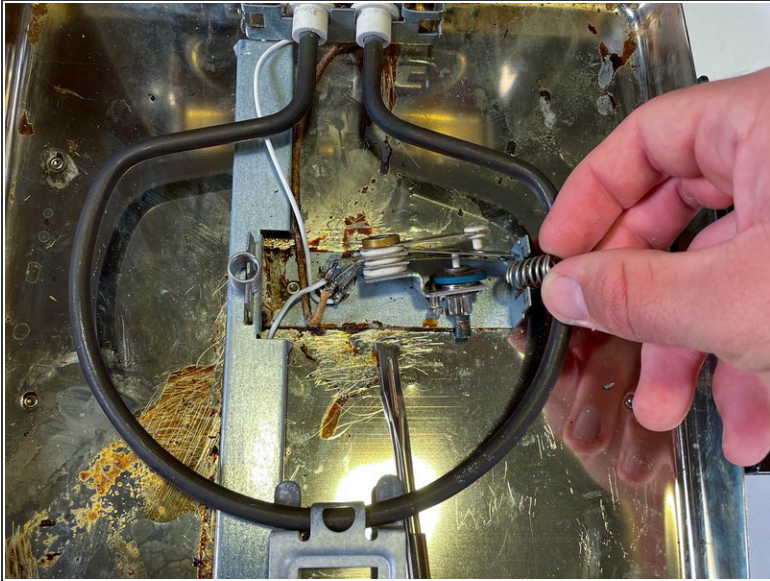
- Lift up the thermostat housing and detach it from the temperature control arm, then remove the washers at the end of the temperature control arm.

Step 8



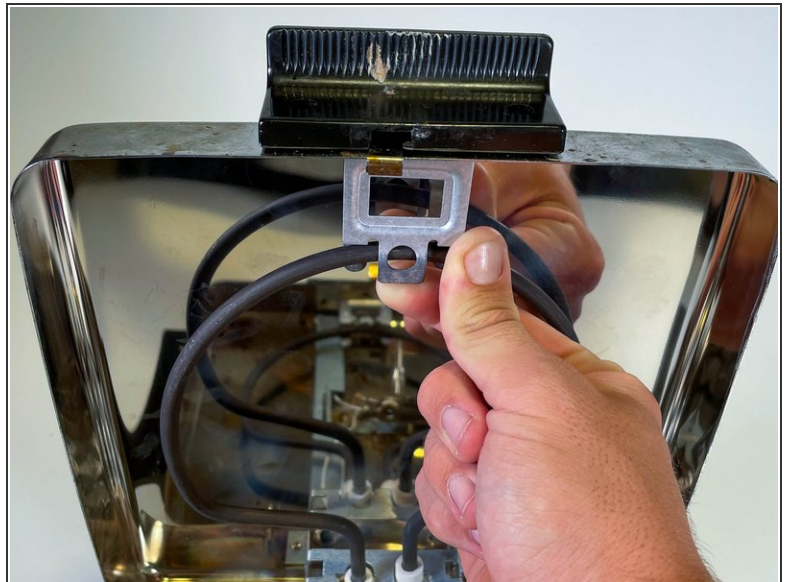
- Remove the thermostat housing.

Step 9



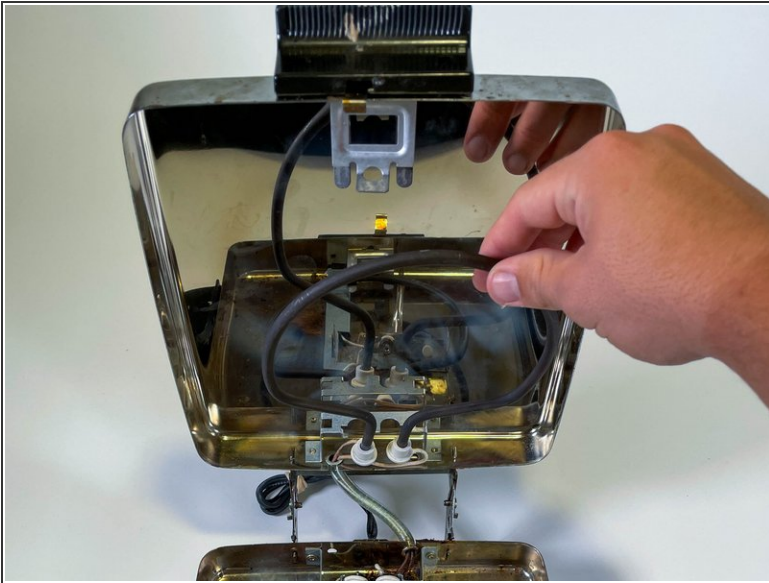
- Remove the thermostat housing springs.

Step 10



- Bend up the brackets holding down the heating elements.

Step 11



- Remove the heating elements from their respective housings (the bottom one is not able to be removed completely as it is fused to a piece of metal).

Step 12



- Remove the housing from the wiring along the bottom of the grill.

Step 13



- The device is fully disassembled!

To reassemble your device, follow these instructions in reverse order.