



MOEN Adler 4-inch Centerset Single-Handle Bathroom Faucet Replacement

This guide will instruct on how to replace an...

Written By: Manahal Khalil



INTRODUCTION

This guide will instruct on how to replace an old bathroom faucet with a new one. One may need to replace a faucet if the taps stop working, there is rust or chemical damage, or even to beautify the bathroom.

Before following this guide, ensure the replacement faucet is the right pick for the sink it is being placed in. The replacement faucet in this guide is a MOEN Adler 4-inch Centerset Single-Handle Low-Arc Bathroom Faucet. The faucet being replaced is an older model of the same kind. Be wary that the instructions for alternative faucets may differ slightly. However, most faucets have similar parts so this guide will still be helpful.



TOOLS:

- [Adjustable Wrench](#) (1)
- [Screw Extracting Pliers](#) (1)



PARTS:

- [MOEN Adler 4-inch Centerset Single-Handle Low-Arc Bathroom Faucet](#) (1)

Step 1 — Faucet



- Turn the water shutoff valve underneath the sink downwards to stop the flow of water.

Step 2



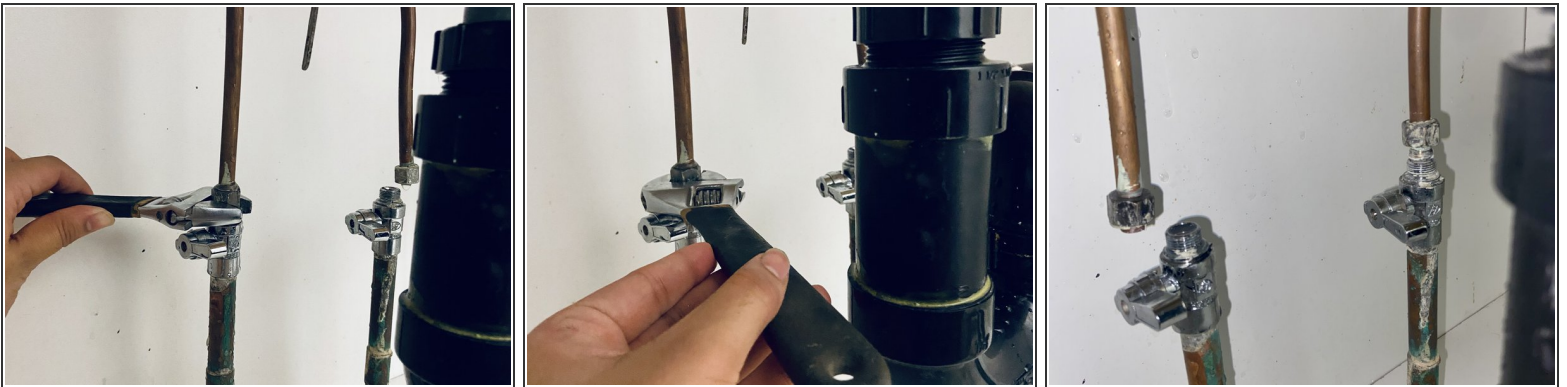
- Turn the tap(s) on to release any pressure build-up in the pipes.

Step 3



- With pliers, unscrew the mounting nuts underneath the sink by turning them counterclockwise.

Step 4



- With an adjustable wrench, unscrew the bolts connecting the faucet pipes to the supply lines.
- After unscrewing the bolts, the faucet pipes should easily come off.

Step 5



- Disconnect the lift rod for the drain plug by pushing it off the metal rod.

Step 6



- After everything is completely disconnected, pull the faucet out from the top.

Step 7



- Clean the area in which the replacement faucet will be placed to ensure that there is a flat surface.

Step 8



- Insert the pipes of the replacement faucet through the sink holes.
- Each pipe will correspond to each hole on the right and left.

Step 9



- With pliers, tighten the mounting nuts underneath the sink in the same location they were removed from.

Step 10



- Reattach the faucet pipes to the supply lines and tighten the bolts with an adjustable wrench.
- Tighten the left and the right pipe.

Step 11



- Reattach the lift rod for the drain plug by lining up the holes and pushing it through the metal rod.

Step 12



- Turn the shutoff valve upwards to line it up with the pipe and resume the flow of water.

Step 13



- ★ Turn on the tap and inspect for leakage. If any leakage does appear, refer to step 1 & 10 and make the pipe bolts tighter.
- ⓘ Otherwise, the replacement sink is completely installed.

To remove the replacement faucet, follow steps 1-6.