



2011-2017 Hyundai Veloster Back-Up Light and Brake Light Replacement

Fix the back-up and brake light of your 2011-2017 Hyundai Veloster at home!

Written By: Adrian Ng



INTRODUCTION

It is crucial to replace your back-up and brake lights immediately because it will affect road safety when you are stopping the car or having an emergency stop. Notice that the police also may pull you over if your tail light is not working.

Are the back-up or brake lights not working in your Hyundai Veloster? Don't want to spend money on the replacement to the auto store? Save money and do it yourself at home or in your garage following this guide step by step. It is easy to understand and follow even you are a beginner.

In this guide, I will replace the back-up light and brake light for a 2012 Hyundai Veloster.

Brake and tail light bulb type: P28/8W (Wattage: 28/8)

Back-up light bulb type: W16W (Wattage: 16)

Note: You can wear your safety & work gloves before working on the replacement.



TOOLS:

- [Phillips #2 Screwdriver](#) (1)



PARTS:

- [sylvania 2357 long life bulb](#) (1)
- [921 Sylvania Long Life Mini Bulbs](#) (1)

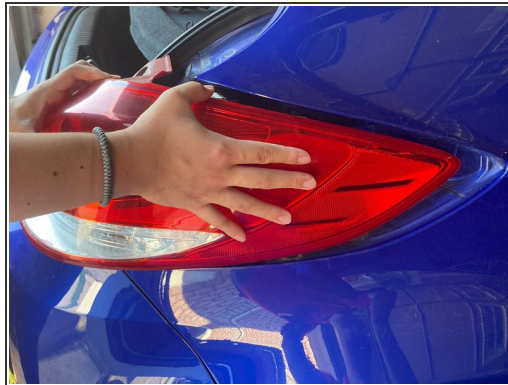
Step 1 — Back-Up Light and Brake Light



⚠ Make sure the car is off before you start your replacement. However, You don't have to disconnect the car battery.

- Open the trunk first.
- Using Phillips #2 screwdriver, remove the two 10 mm screws from the back & tail light.

Step 2



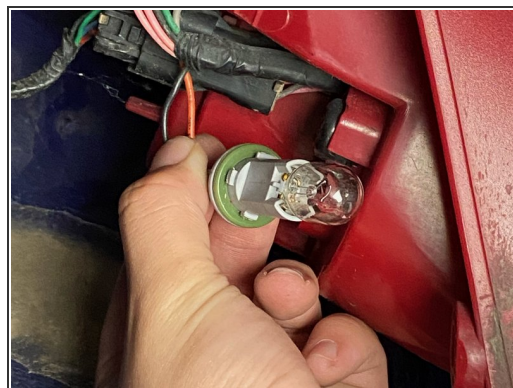
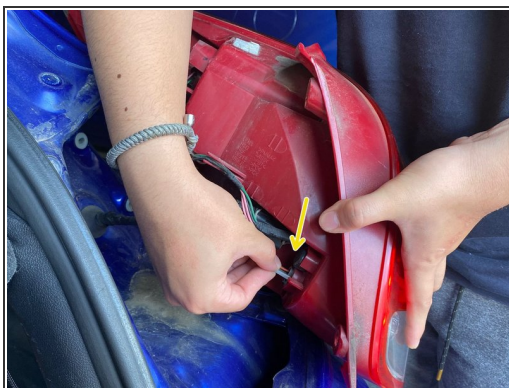
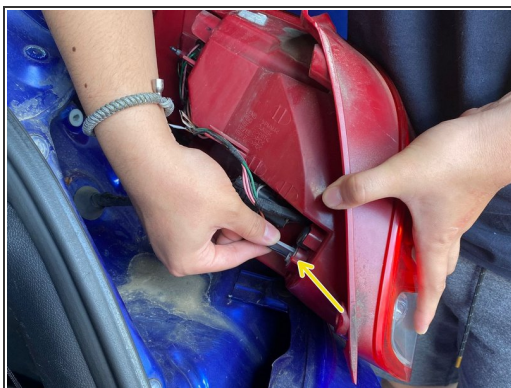
- Using both hands, carefully pull the brake & tail light off.

Step 3



- ❗ Here is the tail light assembly.
- The left one is for the brake light.
 - The right one is for the back-up light.

Step 4



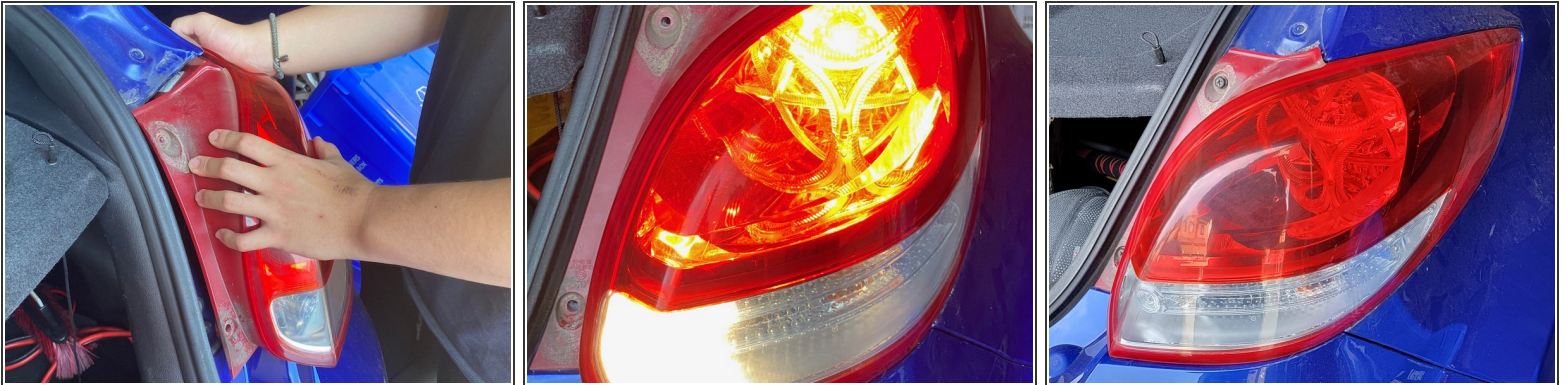
- Twist and turn the backup light to the right. And then pull it out.
- ⚠ Make sure not to touch the surface of the light bulb because it will break the light bulb easily.

Step 5



- Twist and turn the brake light to the right and pull it out.
- ☑ Make sure not to touch the surface of the light bulb because it will break the bulb easily.

Step 6



- ☑ Replace the light bulbs.
- ☑ Check that the light bulbs work first before replacing 10 mm screws.

To reassemble your device, follow these instructions in reverse order.