



Laila Ali Ionic Soft Bonnet Dryer LADR5604

Hose Replacement

This guide will show you how to replace the hose on the Laila Ali Soft Bonnet Hair Dryer LADR560.

Written By: Paige Guillory



INTRODUCTION

Use this guide to replace the hose on your Laila Ali Ionic Soft Bonnet Dryer (model number LADR560).

The hose transfers heat from the dryer to the soft bonnet. Tension from long-term use may cause the hose to disconnect from its heat source, which makes the dryer unusable.

If your hose disconnects from the air outlet, pushing the end of the hose inside the air outlet does not secure the hose in place. This may provide some heat to your hair, but a small amount of tension can pull the hose out of the device.

Replacing the hose ensures your dryer is functioning properly to provide the desired amount of heat to your hair.

Before beginning, disconnect the dryer from any external power source.



TOOLS:

- [Phillips #1 Screwdriver](#) (1)
-

Step 1 — Hose



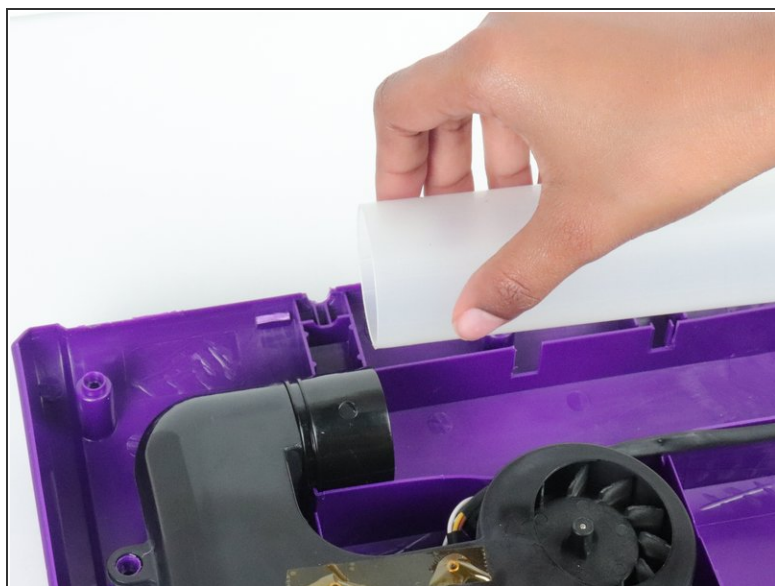
- Place the hair dryer on a sturdy surface with its backside facing up.
- Using a Phillips #1 screwdriver, remove the six 12.7 mm screws from the back of the hair dryer.

Step 2



- Open the hair dryer, and place the front cover to the side.

Step 3



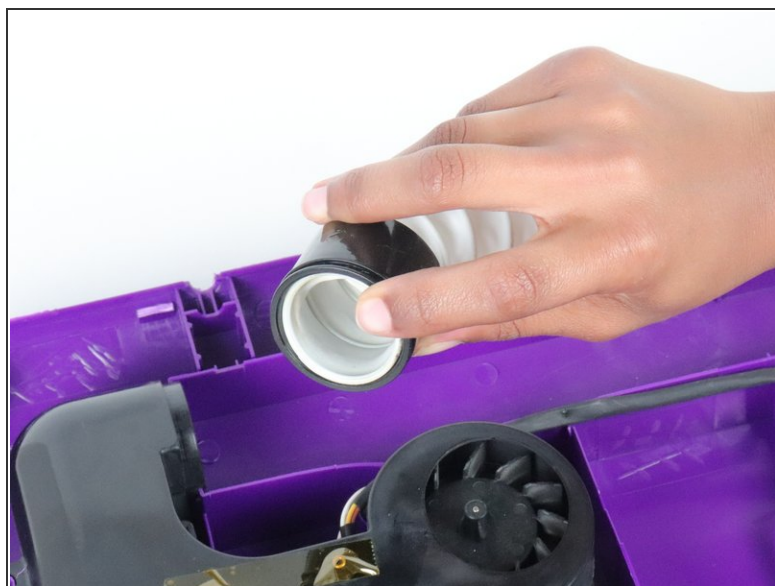
- Disconnect the clear tube from the hose cuff.

Step 4



- Untwist the hose cuff off the fan opening.

Step 5



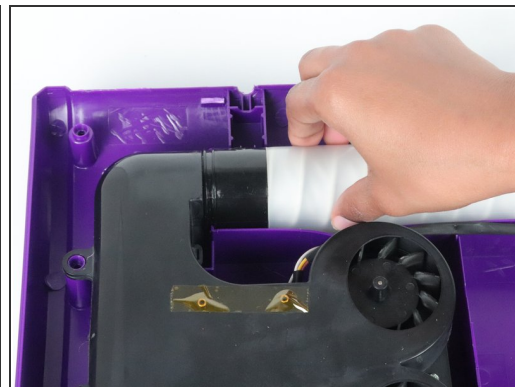
- Pull the hose through the hose cuff until it reaches the top of the inner rim.

Step 6



- Place and twist the hose cuff onto the fan opening.

Step 7



- Slide the hose through the clear tube.
- Slide the clear tube until it meets the rim of the hose cuff.

Step 8



- Place the hair dryer's front cover on top of the back cover, leaving a finger's width space for the next step.

Step 9



- Align the wire cover to the grooves of the left and right sides of the hair dryer.
- Pull the cord through the wire opening.
- Lightly press on the wire cover to secure its placement.
- Push the front cover down to close the hair dryer.

Step 10



- Carefully flip the hair dryer on its backside.
- Place a screw in each opening, and screw them until secure.

Step 11



- Gently pull the hose to ensure it is secure.

To reassemble your device, follow these instructions in reverse order.