



# Logitech Webcam Pro 9000 Camera Replacement

This guide will lead you in desoldering the...

Written By: nieko



---

# INTRODUCTION

This guide will lead you in desoldering the connections between the camera and the motherboard.

---



## TOOLS:

- [Soldering Workstation](#) (1)
  - [Lead-Free Solder](#) (1)
  - [Desoldering Braid](#) (1)
  - [Phillips #0 Screwdriver](#) (1)
-

## Step 1 — Front and Back Cover

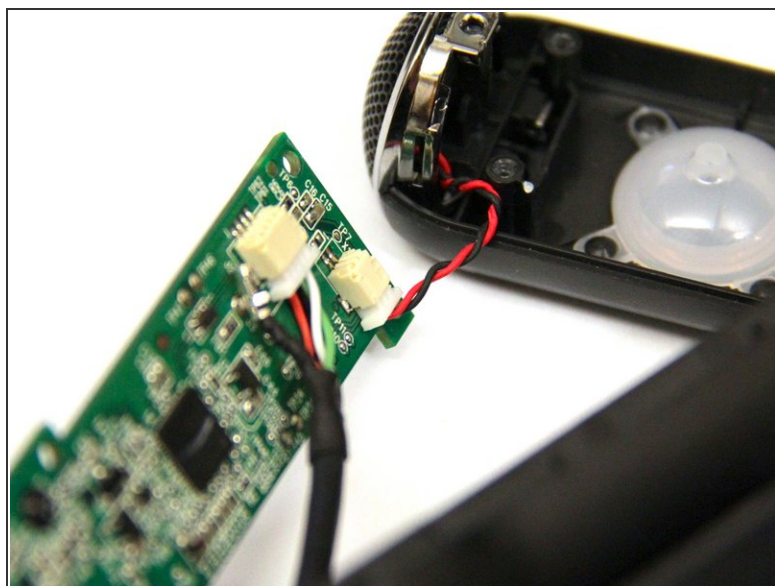
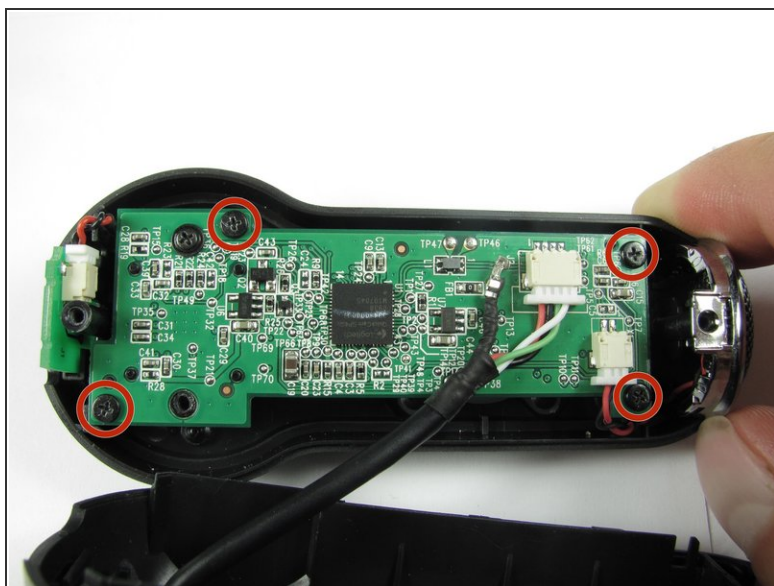


- Remove the two 8 mm Phillips #0 screws on the back cover.

⚠ The motherboard connects the two covers together. DO NOT separate the two yet.

i There is a button that loosens as the Phillips screws are removed. Don't be alarmed if it falls out.

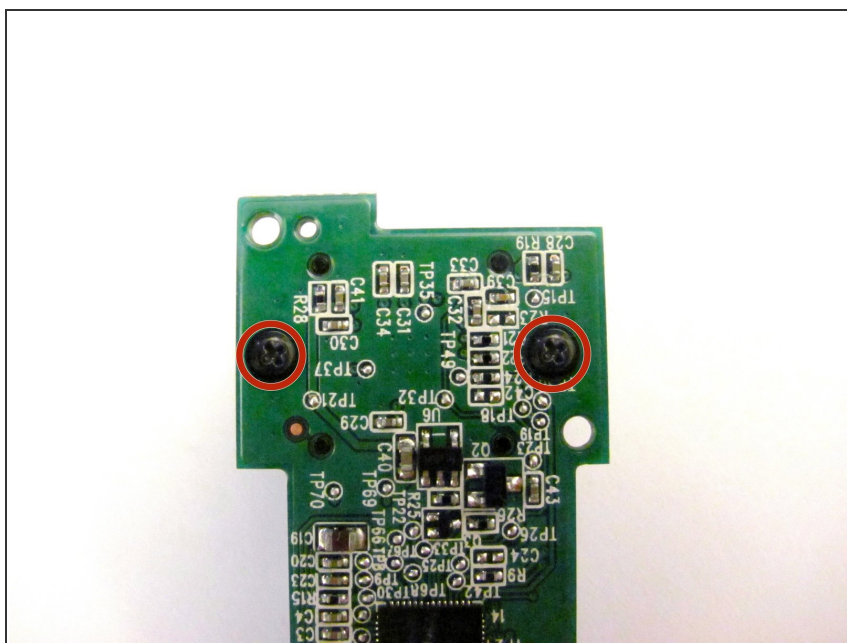
## Step 2



- Remove the four 6mm Phillips #0 screws connecting the motherboard and front cover.

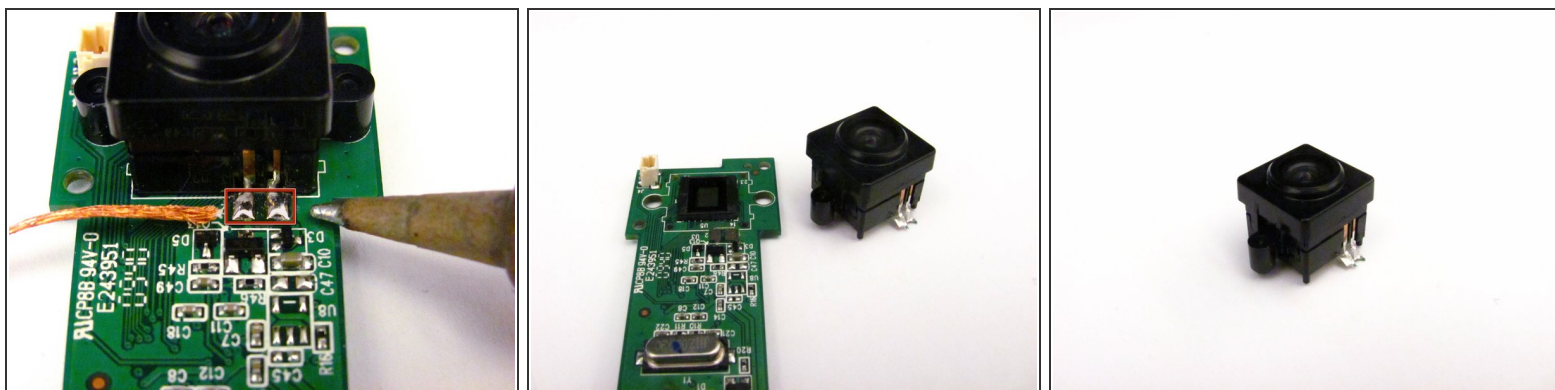
**⚠ DO NOT** detach the wire connecting the motherboard to the front cover.

## Step 3 — Camera



- Remove the two 8mm Phillips#0 screws on the back of the motherboard.

## Step 4



- Remove the camera from the motherboard by desoldering the two connections as shown.

 Follow this [link](#) to learn how to properly solder and desolder your parts.

To reassemble your device, follow these instructions in reverse order.