



Toshiba Canvio Connect V73600-C

Disassembly

Disassemble your Toshiba Canvio Connect external USB3 hard drive. Pictures show the HDTC710AS3A1 model specifically (Silver, 1TB). May work for HDTC7xyyyyyy

Written By: CONVERSION



INTRODUCTION

This guide will disassemble a Toshiba Canvio Connect V73600-C portable external USB 3 hard drive, specifically model HDTC710AS3A1, which is the silver 1TB model. This guide may work for other Toshiba Canvio models.



TOOLS:

- [Spudger](#) (1)
-

Step 1 — Begin opening case



- On the side of your hard drive casing, insert a spudger.
- This can be tricky as the tolerances are quite tight.
- I used a needle to make the gap big enough to insert a pick.

Step 2 — Continue opening



- Slide your spudger along the gap in the casing you made in the previous step, continuing to open the device.

Step 3 — Keep going



- Slide the spudger around the corner of the casing to start opening the next side.
- There may be a gap big enough to see the plastic clips holding the device together.

Step 4 — Prise the casing open



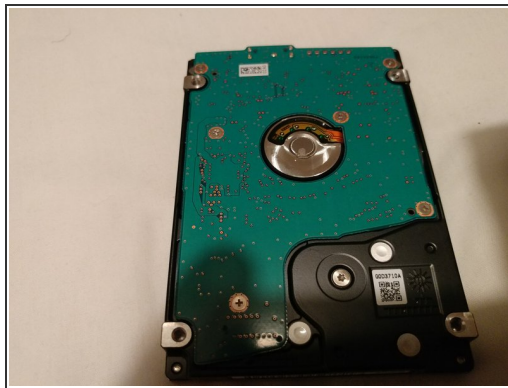
- Once there is a big enough gap in the casing, gently prise the two parts away from each other, being sure not to break any clips.
- This will reveal the hard drive in the casing.

Step 5 — Extract the hard drive



- Simply lift the drive out of the case.
- There may be some friction due to the anti-shock rubber on the corners of the drive.
- Gently pry with a plastic pry tool if required.

Step 6 — Realise the drive is not suitable for internal use



- As the drive has a USB port soldered directly to its logic board, instead of a converter board in between, disassembling this device seems to be pointless unless the hard drive is being used for parts.

To reassemble your device, follow these instructions in reverse order.