



# Logitech G PRO Wireless Battery Replacement

How to replace the battery on a Logitech G PRO Wireless mouse.

Written By: Kyle Smith



# INTRODUCTION

Follow this guide to replace the battery on a Logitech G PRO Wireless mouse.

Replacing the battery on a G PRO Wireless mouse requires removing the mouse feet. If you plan to reuse the mouse feet, you'll need to apply heat to loosen the adhesive and remove the feet with minimal bending. Bent or torn mouse feet may require replacement feet.

**For your safety, discharge the battery below 25% before disassembling your mouse.** This reduces the risk of a dangerous thermal event if the battery is accidentally damaged during the repair. If your battery is swollen, [take appropriate precautions](#).



## TOOLS:

- [iOpener](#) (1)  
*Optional*
- [Spudger](#) (1)
- [Phillips #00 Screwdriver](#) (1)
- [ESD Safe Tweezers Blunt Nose](#) (1)



## PARTS:

- [Precut Adhesive Card](#) (1)  
*Optional*

## Step 1 — Turn off the PRO Wireless



- Shift the power switch down to turn off your mouse (when the PRO Wireless label is oriented right-side up).
- ⓘ The color behind the switch should be red when the mouse is switched off.

## Step 2 — Apply heat to the upper mouse foot



- ⓘ If you plan to reuse the mouse feet, you'll need to apply heat to loosen the adhesive and remove the feet with minimal bending.
- [Heat an iOpener](#) and apply it to the upper mouse foot for one minute.
- ⓘ A hair dryer or heat gun may also be used, but be careful not to overheat the mouse—the internal battery is susceptible to heat damage. If you use a hair dryer or heat gun, set it to the lowest temperature setting and apply heat for 10 seconds.



### Step 3 — Insert the spudger under the upper mouse foot



- Insert the flat end of a spudger under the upper mouse foot.
  - ⓘ Each mouse foot has a gap in its recess that you can use to insert the spudger.
  - ⓘ The mouse feet are made of two layers. Make sure you insert the spudger under the bottom layer to completely remove the foot.

### Step 4 — Remove the upper mouse foot



- Slide the spudger under the length of the upper mouse foot to cut through the adhesive and detach it from the mouse.
  - ⓘ Work slowly to avoid bending the mouse foot. If the adhesive becomes difficult to cut through, remove the spudger and apply more heat.

## Step 5 — Apply heat to the lower mouse feet



- Apply the iOpener to the lower mouse feet for one minute.
- ⓘ Alternatively, use a hair dryer or heat gun to apply heat for ten seconds.

## Step 6 — Remove the lower mouse feet



- Insert the flat end of a spudger under the left lower mouse foot.

## Step 7



- Slide the spudger under the length of the left lower mouse foot to cut through the adhesive and detach it from the mouse.

## Step 8



- Repeat the procedure to remove the two remaining lower mouse feet.



## Step 9 — Adhesive information



- i If you are going to install replacement mouse feet or apply new adhesive, use the flat edge of a spudger to remove the remaining adhesive in the mouse foot recesses.
- ★ During reassembly, [follow this guide](#) if you are using a pre-cut adhesive card to secure the mouse feet.

## Step 10 — Remove the lower case screws



- Use a Phillips screwdriver to remove the seven 4.4 mm-long screws securing the lower case.

## Step 11 — Lift the bottom end of the lower case



**⚠ Don't try to remove the lower case from the upper case yet. They are still attached by the battery cables and input cable.**

- Lift the bottom end of the lower case about 1 cm away from the upper case.



## Step 12 — Pull the lower case down



- i** The lower case has clips on its top edge attaching it to the upper case.
- Pull the lower case down about 0.5 cm to detach the lower case from the upper case.

## Step 13 — Swing the lower case away from the upper case



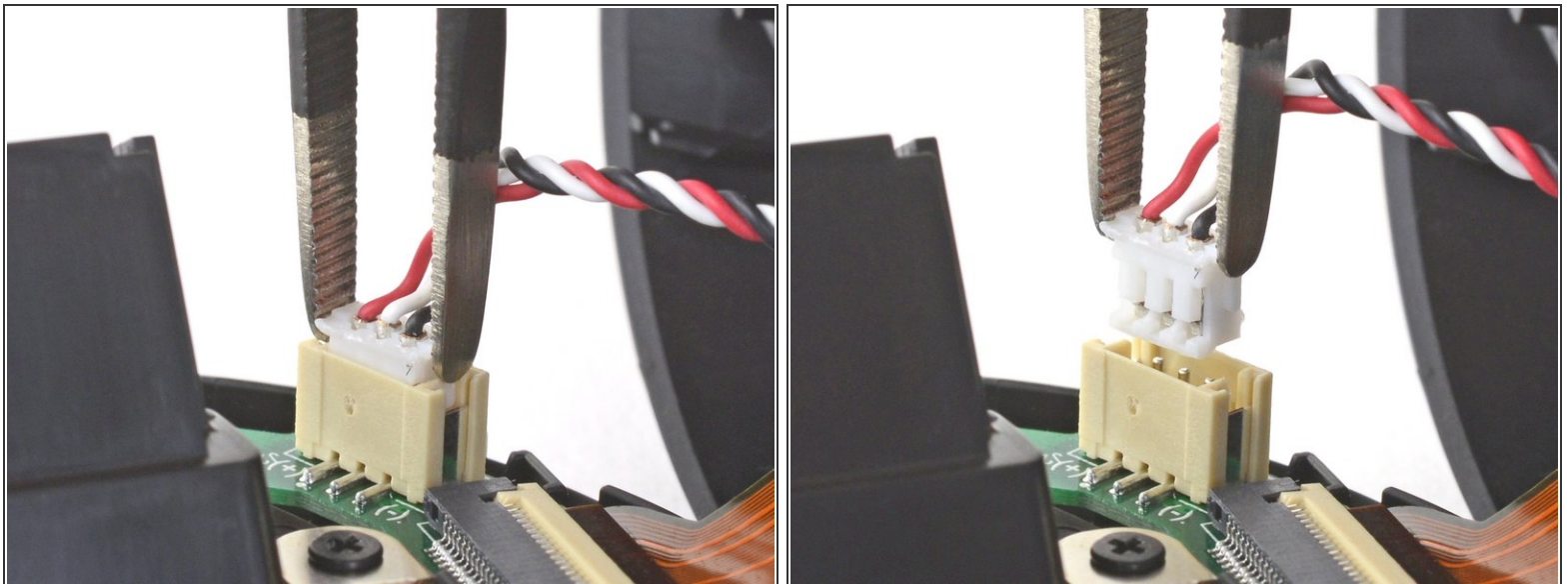
- i** The battery cables and input cable are connected to the bottom right of the lower case (when the PRO Wireless logo is facing you).
- Swing the lower case left to right away from the upper case.


## Step 14 — Place the mouse on your work surface



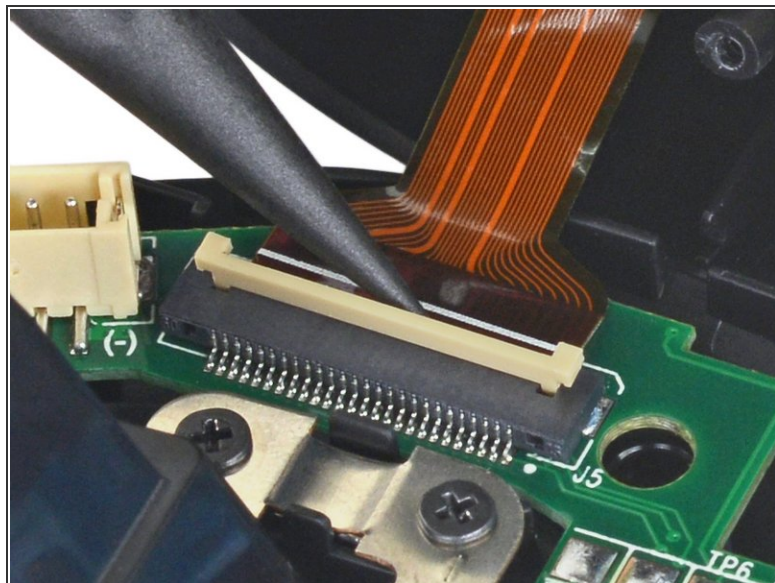
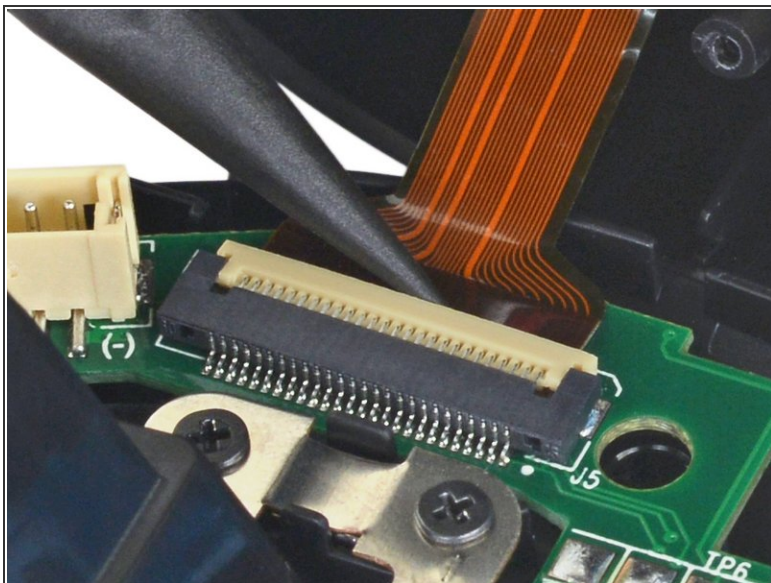
- Place the lower case on your work surface.
- Lean the upper case against a sturdy object (such as a box) to prevent straining the cables.

## Step 15 — Disconnect the battery



- Use a pair of blunt tweezers to pull the battery connector straight out of its slot.
-  Pull up with a rocking motion to "walk" the battery connector out of its slot.
- ☑ During reassembly, make sure the battery connector is oriented correctly when you insert it into its slot. The red wire should be on the side where the motherboard is marked with a plus sign (+).

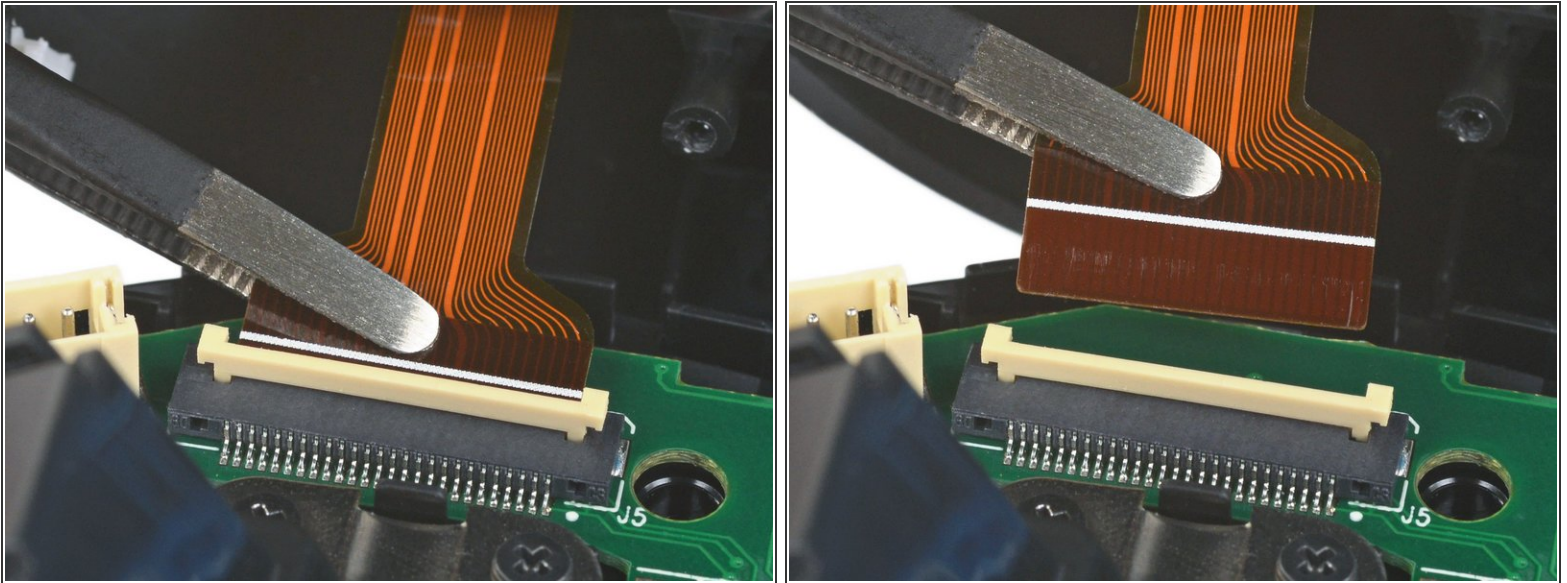
## Step 16 — Disconnect the input cable



- Use the pointed end of a spudger or your fingernail to flip up the small, hinged locking flap on the input cable [ZIF connector](#).



## Step 17



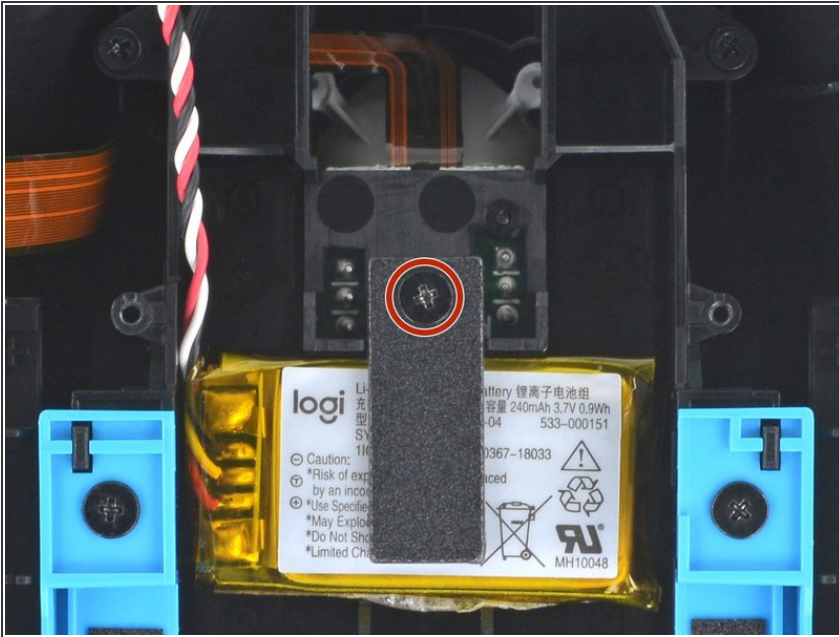
- Use a pair of tweezers to pull the input cable out of its ZIF connector.
- ✦ The white line on this ribbon cable marks the edge of the connection area. To reinstall, insert the cable into the connector up to this line, and then close the locking flap. If the cable doesn't insert easily up to (or very near to) this line, it's probably misaligned and needs to be gently removed and repositioned.

## Step 18 — Remove the upper case



- Remove the upper case from the lower case.

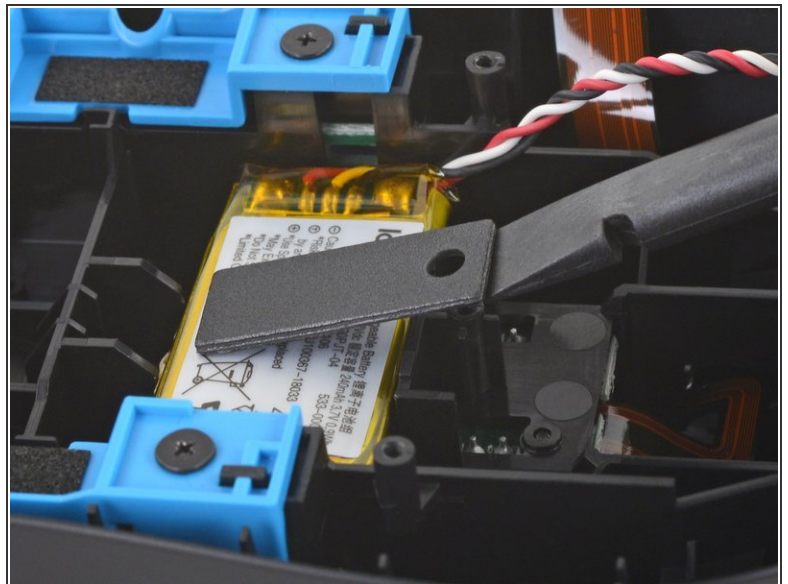
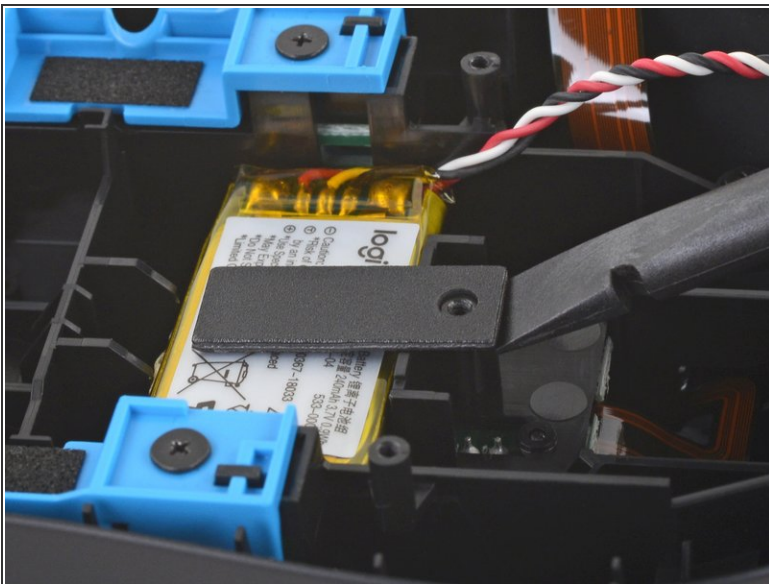
## Step 19 — Remove the screw securing the battery plate



⚠ Take care not to puncture or bend the battery with your tools—a punctured or bent battery may leak dangerous chemicals or cause a thermal event.

- Use a Phillips screwdriver to remove the 3.5 mm screw securing the battery plate.

## Step 20 — Detach the battery plate

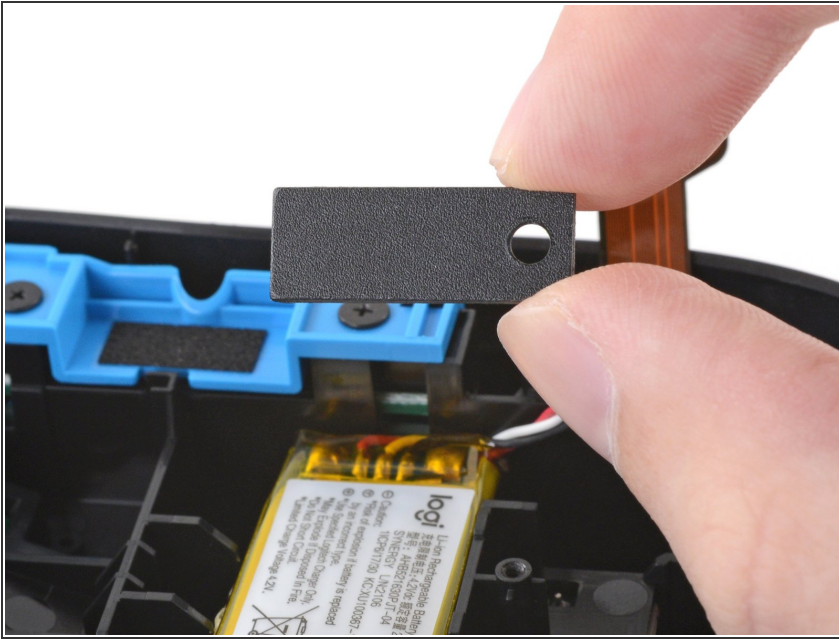


**i** The battery plate is lightly adhered to the battery.

- Use the flat edge of a spudger to lift up the screw side of the battery plate and detach it from the battery.



## Step 21 — Remove the battery plate



- Remove the battery plate from the battery.

## Step 22 — Remove the battery



**i** The battery is lightly adhered to the upper case.

- Insert the flat edge of a spudger under the gap beneath the right side of the battery.
- Lift up the spudger to detach the battery from the upper case.

## Step 23



- Repeat the previous step for the left side of the battery.

## Step 24



- Remove the battery from the upper case.

⚠ Do not reuse the battery after it has been removed, as doing so is a potential safety hazard. Replace it with a new battery.

- ☑ If your replacement battery doesn't have preinstalled adhesive, apply a 1 cm by 1 cm piece of [pre-cut adhesive](#) to the bottom of the battery.

Compare your new replacement part to the original part—you may need to transfer remaining components or remove adhesive backings from the new part before installing.

**To reassemble your device, follow these instructions in reverse order.**

Take your e-waste to an [R2 or e-Stewards certified recycler](#).

Repair didn't go as planned? Try some [basic troubleshooting](#), or ask our [Logitech G PRO Wireless Answers community](#) for help.