



# How to Repair a Painting Frame

This guide will help you restore a painting frame to its full potential without having to replace a beloved painting.

Written By: Sofia Morales



## INTRODUCTION

This guide will show you the process of repairing a painting frame. With this project, I will demonstrate how to restore a frame to its full potential and not waste funds in purchasing another one. I believe this guide is needed because a painting (including the frame) is expensive. Many of these works could also be of great value and it would be a huge waste to have to throw away a piece because of a broken frame. Not only is it unnecessary waste in the world but it's also disrespectful to throw away a piece made by a hardworking artist. If you just replace items that are fixable (a broken frame for example), it will just become an endless cycle of dangerous consumption. This guide will prevent this issue.

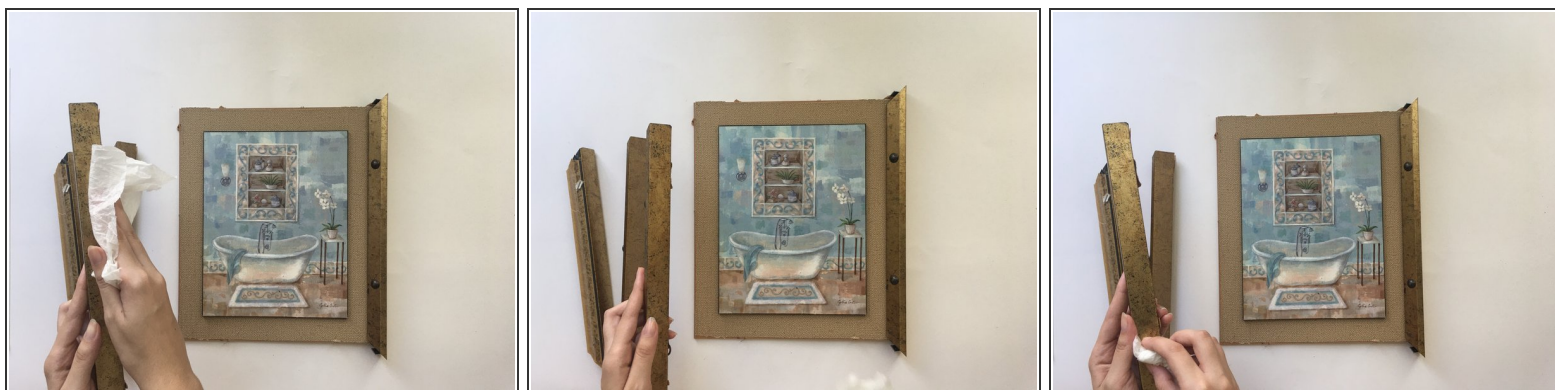
You can use Araldite, Loctite, Gorilla Glue, or any other epoxy adhesive. Araldite is the standard epoxy adhesive, and it can be found at your local hardware store (most recommendable). The Araldite comes with two tubes: the resin and hardener.

---

### TOOLS:

- [Epoxy](#) (1)
  - [Paper plate](#) (1)
  - [Wooden Stick](#) (1)
  - [Duct Tape](#) (1)
-

## Step 1 — How to Repair a Painting Frame



- Wipe the frame with a damp cloth.

## Step 2



- Use a paper plate to mix the epoxy adhesives with a wooden stick.
- ⓘ Follow the instructions on your specific package of epoxy adhesive.
- ⓘ Make sure to use the glue within 45 minutes after mixing.

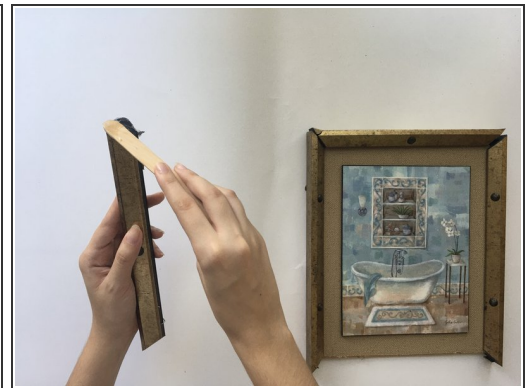


### Step 3



- Flip the glass painting and remove the frame joints.

### Step 4



- Use a wooden stick to apply a thin layer of glue on the edges of the frame.

## Step 5



- Put the glass painting over the glue and close the frame's metal clamps.

## Step 6



- Seal the clamps with duct tape for protection.
- ⓘ Repeat Steps 5-7 on all sides of the painting. It is suggested to place painting over the surface so it will be easier to apply the glue.
- Once all four sides are done, clamp the corners with safety tape.
- Let the glue dry for a minimum of 24 hours.

## Step 7



- Remove all the tape from the metal clamps and the corners of the frame.

## Step 8



- After that, you will have a restored painting frame.