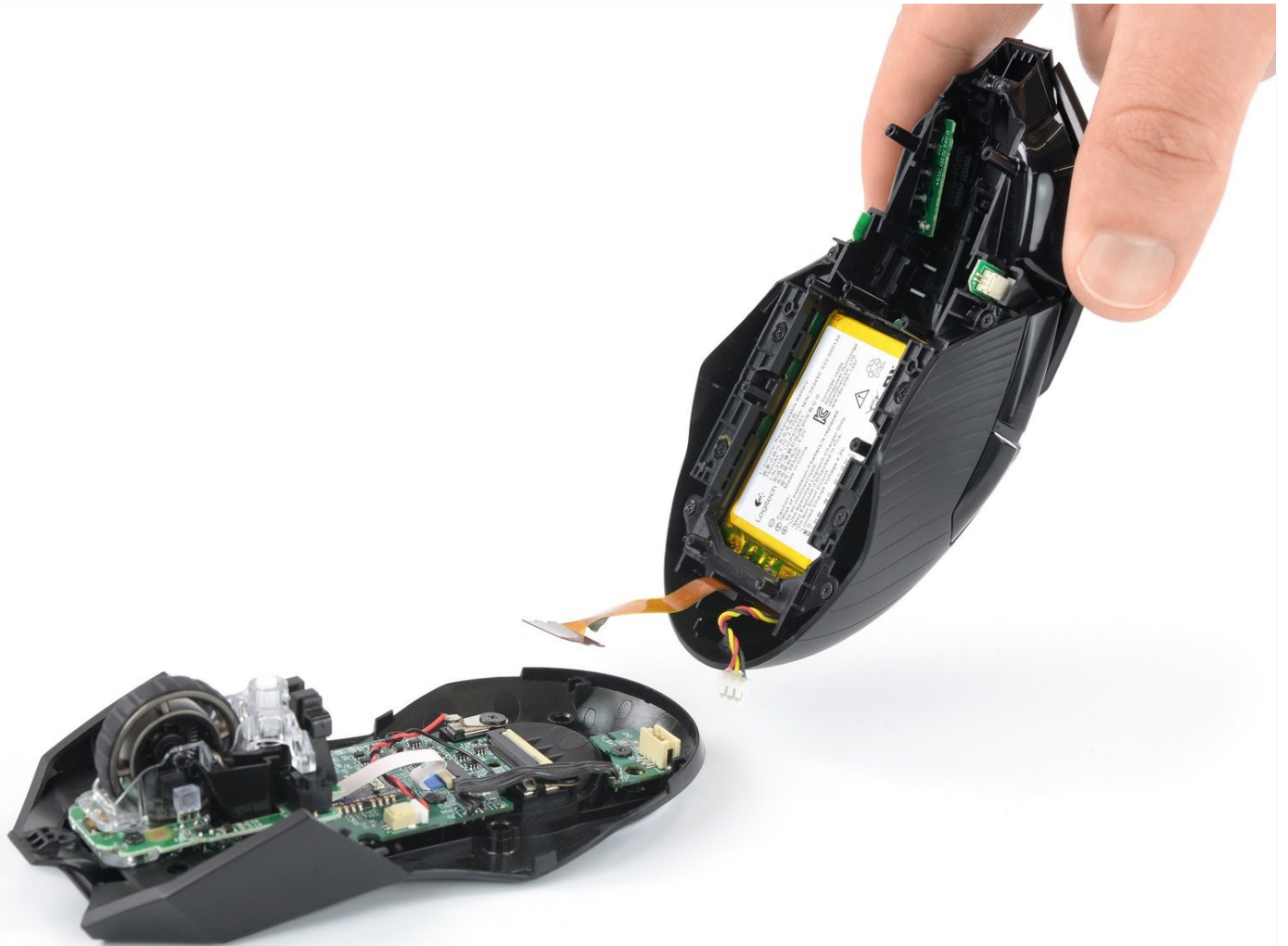




How to Open the Logitech G903

Use this guide to open a Logitech G903 for...

Written By: Dominik Schnabelrauch



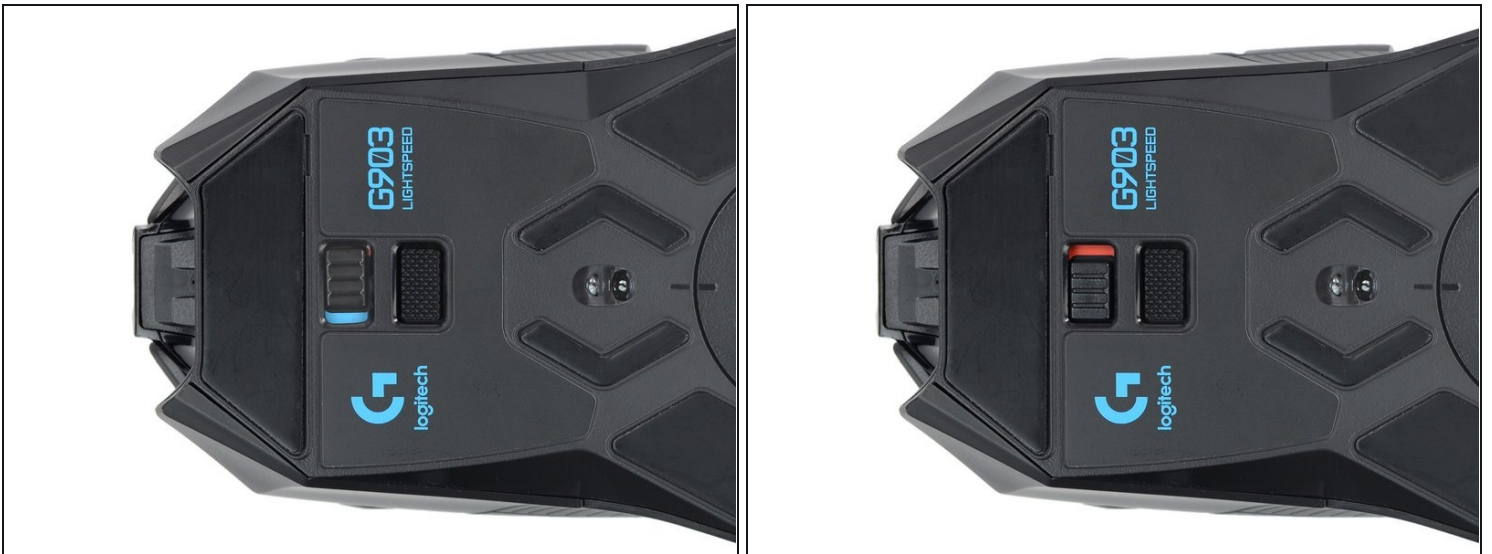
INTRODUCTION

Use this guide to open a Logitech G903 for cleaning or repair.

TOOLS:

- [Isopropyl Alcohol \(90% or Greater\)](#) (1)
- [iOpener](#) (1)
- [iFixit Opening Picks \(Set of 6\)](#) (1)
- [Spudger](#) (1)
- [Microfiber Cleaning Cloths](#) (1)
- [Phillips #00 Screwdriver](#) (1)
- [T5 Torx Screwdriver](#) (1)
- [ESD Safe Blunt Nose Tweezers](#) (1)

Step 1 — Turn off the mouse



- Before you begin, flip the mouse's power switch into the red **OFF** position.

Step 2 — Heat the mouse foot



- ⓘ If you're planning to reuse your existing mouse feet, note that the adhesive needs to be thoroughly heated to cleanly remove them.
- [Heat an iOpener](#) and apply it to the bottom mouse foot for two minutes.
- ⓘ A hair dryer or heat gun may also be used, but be careful not to overheat the mouse—the internal battery is susceptible to heat damage.

Step 3 — Separate the mouse foot adhesive



- Slide an opening pick under an edge of the bottom mouse foot.
 - ⓘ Go slowly, and make sure the pick is underneath both the foot and its adhesive layer if you want to reuse the foot. It's easy to separate the foot from its adhesive.
- ⓘ If the foot feels stuck, apply more heat before continuing.
- Slide the pick under the rest of the foot until you can lift it off the mouse.
- Remove the foot.

Step 4 — Clean off the old adhesive



i If the adhesive separated from the foot:

- Slide the flat end of a spudger under an edge of the adhesive. If the adhesive seems stuck, you may need to heat the adhesive further.
- Peel the adhesive off.

★ Before installing new feet or reinstalling old ones, wipe away any adhesive residue from the mouse with a lint-free cloth and high-concentration isopropyl alcohol.

Step 5 — Remove the pentagonal mouse feet



- Repeat the previous mouse feet removal procedure and remove the two pentagonal mouse feet on the left and right side.

Step 6 — Heat the Logitech sticker



- ① The Logitech sticker at the bottom of the mouse is very heat sensitive and crumbles easily. In case you want to keep that sticker intact apply as little heat as possible and remove the sticker carefully.
- ① If you don't want to remove the sticker all the way, you can puncture it with a screwdriver where the two screws are located beneath it. Use [this picture](#) to make sure you're hitting the right spots.
- [Heat an iOpener](#) and apply it to the Logitech sticker to loosen its adhesive.

Step 7 — Remove the Logitech sticker



- Slide an opening pick under an edge of the Logitech sticker.
 - ⓘ In case you want to reuse the sticker go slowly, and avoid tearing or crumbling the sticker.
- ⓘ If the sticker feels stuck, apply a little bit more heat before continuing.
- Slide the pick under the rest of the sticker until you can peel it off the mouse.
- Remove the sticker.

Step 8 — Remove the case screws



- Use a Phillips screwdriver to remove the seven 4.5 mm screws securing the two halves of the mouse together.
 - ⓘ The top middle screw may be a Torx T5.

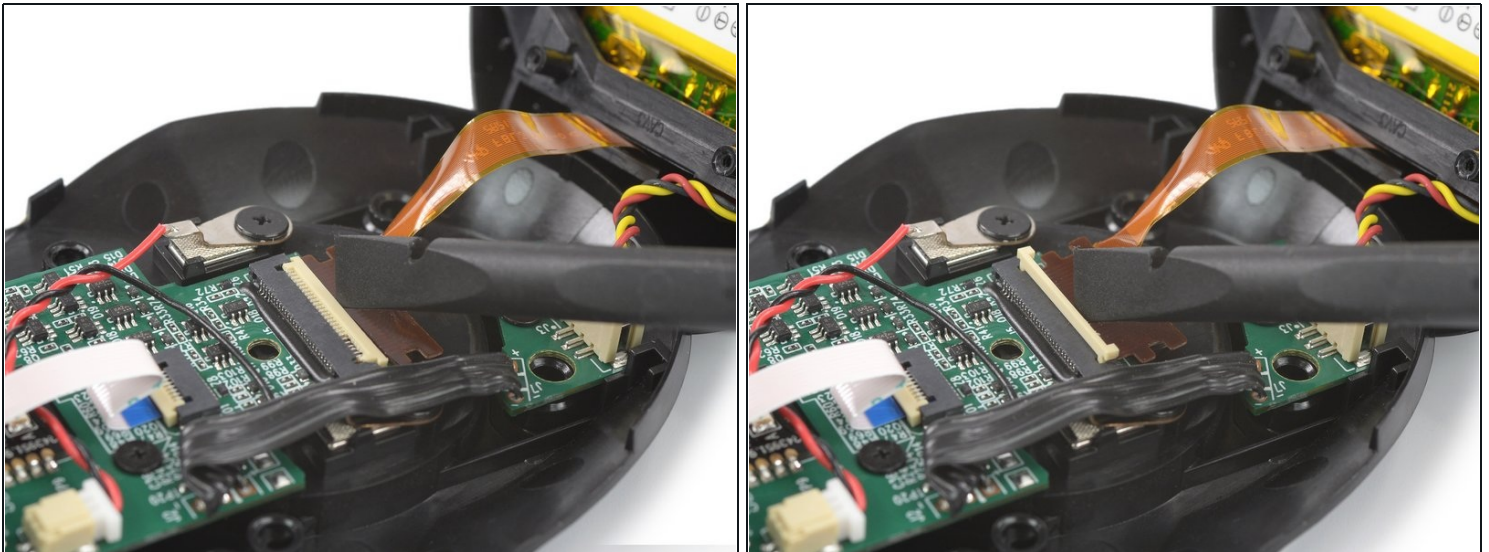
Step 9 — Open the mouse



⚠ Don't completely separate the two halves yet—they're still tethered together by a delicate cable.

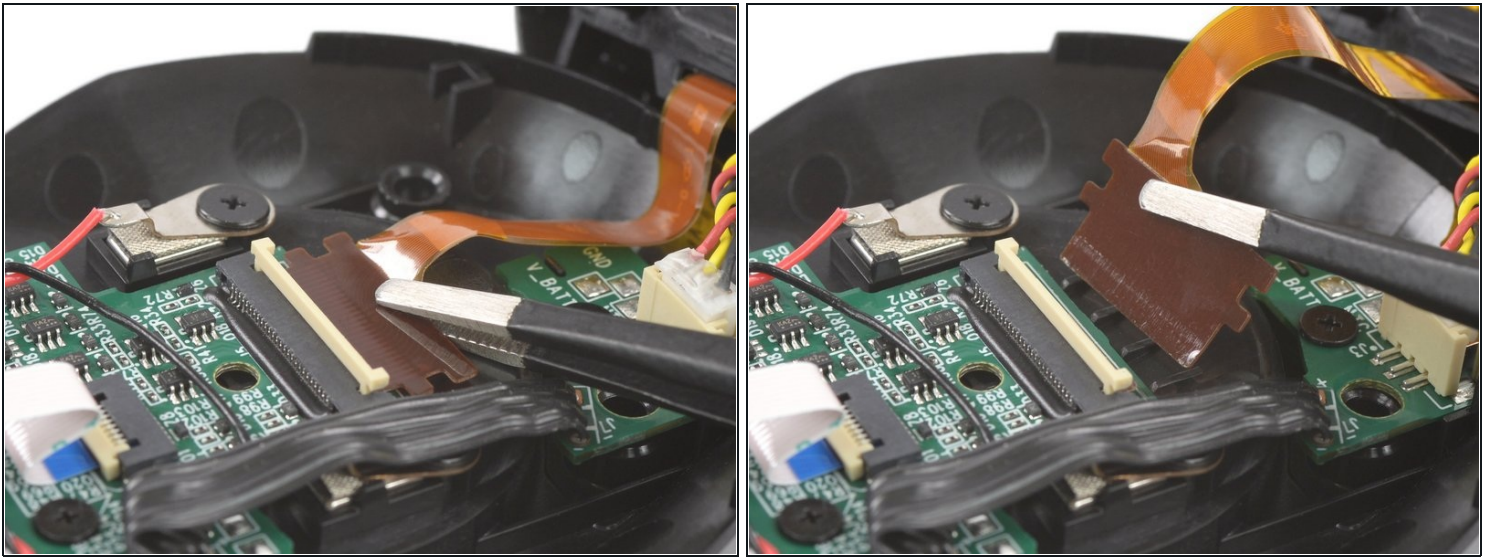
- For better access, open the top half of the mouse in the direction of the rear end.

Step 10 — Open the ZIF connector



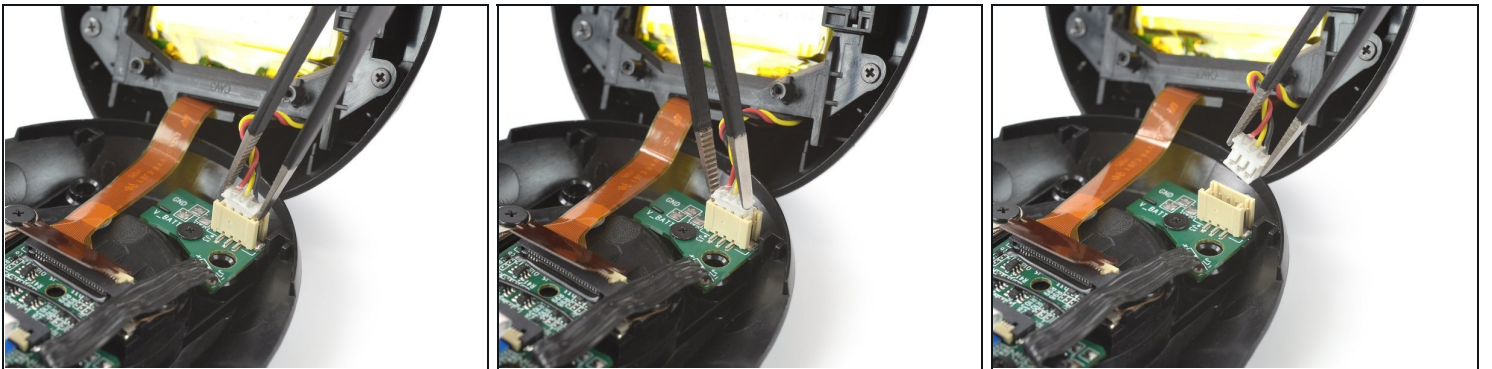
- Use a spudger, an opening tool, or your fingernail to flip up the small, hinged locking flap on the interconnect cable [ZIF connector](#).

Step 11 — Disconnect the interconnect cable



- Use a pair of blunt nose tweezers or your fingers to slide the interconnect cable out of its socket.

Step 12 — Disconnect the battery



- Use a pair of blunt tweezers to grasp the sides of the battery connector.
- Pull the connector up and out of its socket, gently rocking it back and forth to loosen the clips securing it.

Step 13 — Remove the top half of the mouse



- Remove the top half of the mouse.

Compare your new replacement part to the original part—you may need to transfer remaining components or remove adhesive backings from the new part before installing.

To reassemble your device, follow the above steps in reverse order.

Take your e-waste to an [R2 or e-Stewards certified recycler](#).

Repair didn't go as planned? Check out our [Answers community](#) for troubleshooting help.