



Removing Dell Inspiron 1150 LCD from Display Assembly

This guide shows how to disassemble the display assembly to remove the LCD display panel.

Written By: Richdave

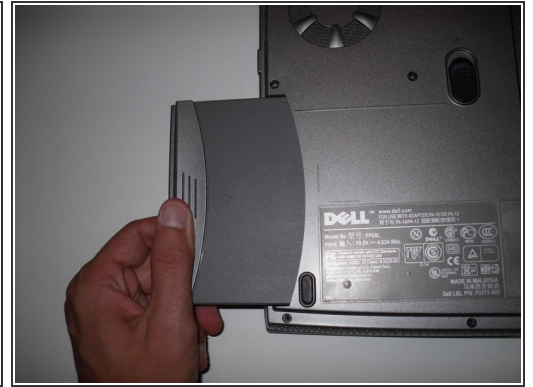
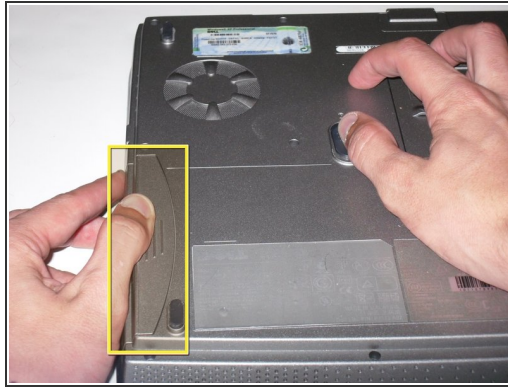
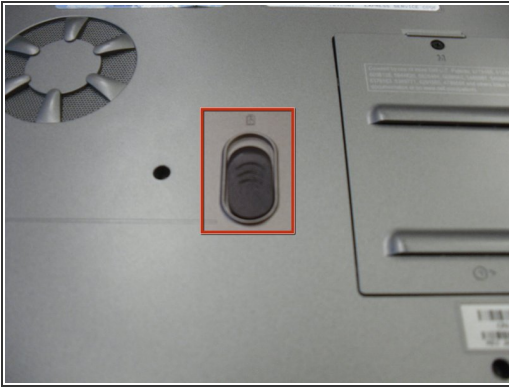




TOOLS:

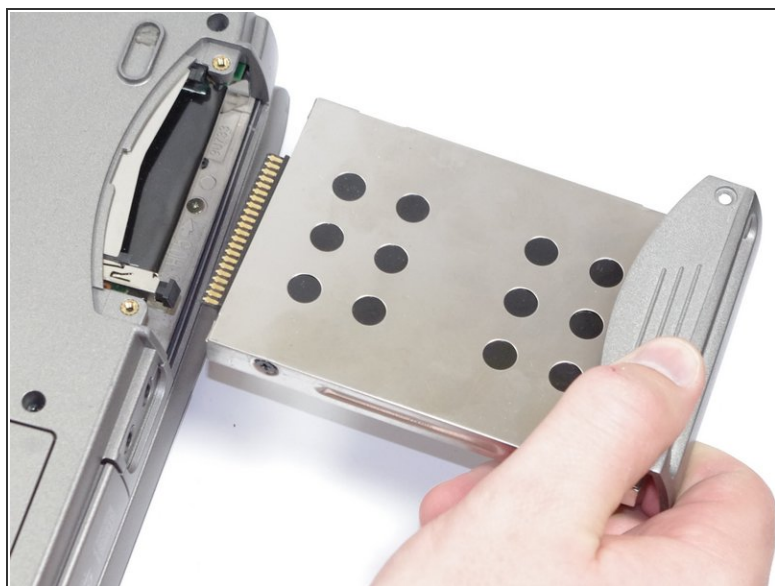
- [Phillips #1 Screwdriver](#) (1)
 - [Spudger](#) (1)
-

Step 1 — Removing Dell Inspiron 1150 Battery



- Place the laptop upside down on a clean, flat surface.
- Locate the battery release button with the padlock symbol above it.
- Slide the battery release button towards the padlock symbol and hold it there. Note that the button is spring loaded and will return if released.
- ⓘ The battery is now released from the battery compartment.
- Gently remove the battery from the side of the laptop.

Step 2 — Hard Drive



- Place laptop upside down on a clean flat surface.
- Remove 2ea M2.5 x 5 mm screws.
- Pull the HDD from main body of the laptop.

Step 3 — Optical Drive (Based on Dell Service Manual)



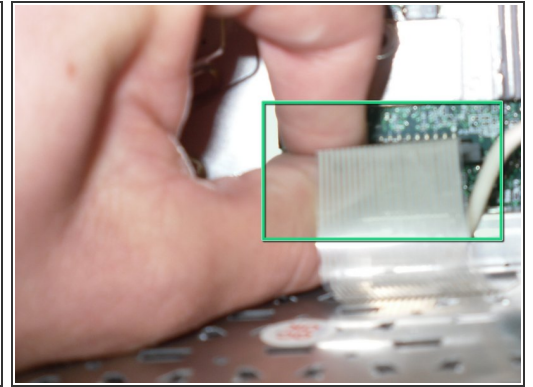
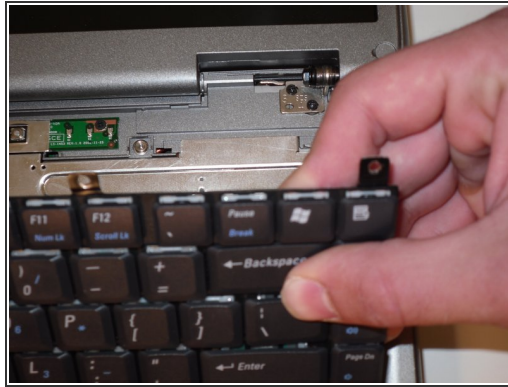
- Place laptop upsid down on a clean flat work surface.
- Remove the Philips M2.5 x 8 mm screw
- Loosen the screw that holds the memory compartment closed
- remove the memory module compartment cover
- Press the Optical Drive release lever to the right and the optical drive should slide out of the case

Step 4 — Keyboard



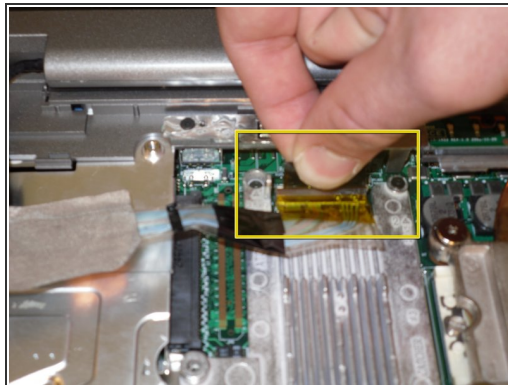
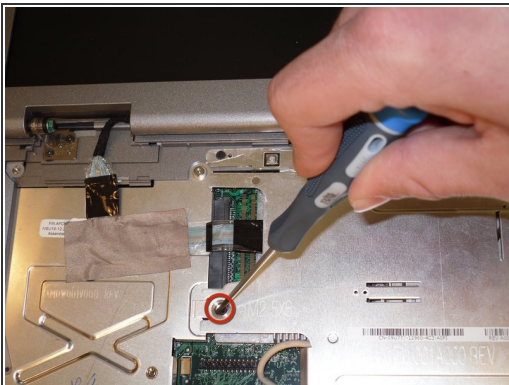
- Use a spudger to lift the notched right edge of the hinge cover, and pry it loose
- ⚠ You need to lay the LCD screen down flat to allow the hinge cover to be lifted off
- Lift the hinge cover off and set aside

Step 5



- Remove 4ea M2 x 3mm keyboard screws
- Lift up keyboard from the rear to expose the connector below
- Disconnect the keyboard ribbon cable from the motherboard


Step 6 — Display Assembly



- Remove 1ea M2.5 x 8mm screw holding the EMI shield in place
- Remove the EMI shield to expose the LCD ribbon cable
- Gently pull up on the tab to disconnect the ribbon cable from the main board
- Close the lid carefully and remove the two M2.5 x 5-mm screws from the rear of the case

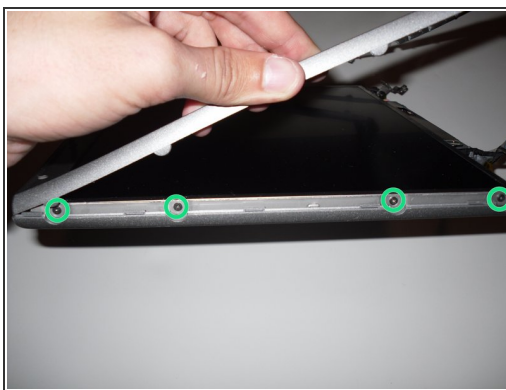
Step 7




 Open the lid and support the Display Assembly while performing the next step to avoid it falling down when the hinge screws are removed

- Remove 2e M2.5 x 5mm screws from each hinge bracket
- The Display Assembly can now be lifted free of the laptop body

Step 8 — Removing LCD from Display Assembly



- Remove the 2 screw covers and 3 rubber bumpers to reveal 5ea M2.5 x 5mm Philips screws
- Remove the 5 screws and gently lift off the screen bezel (surround) to reveal the LCD panel and mounting screws which are along each side of the LCD
- Remove 8ea M2 x 3mm (4 screws along each side)
- The LCD display can now be removed from the top cover of the laptop
-  The inverter PCB is located on the bottom edge of the LCD display panel and is easily removed

To reassemble your device, follow these instructions in reverse order.