



Written By: Adriana Zwink



INTRODUCTION

Use this guide to replace a worn-out or dead battery in your Galaxy Watch4.

If your battery is swollen, [take appropriate precautions](#). For your safety, **discharge your battery below 25%** before disassembling Galaxy Watch4. This reduces the risk of a dangerous thermal event if the battery is accidentally damaged during the repair.



TOOLS:

- [iFixit Opening Tool](#) (1)
- [Tri-point Y000 Screwdriver](#) (1)
- [Spudger](#) (1)
- [Phillips #00 Screwdriver](#) (1)
- [iFixit Opening Picks \(Set of 6\)](#) (1)
- [ESD Safe Tweezers Blunt Nose](#) (1)



PARTS:

- [Samsung Galaxy Watch4 \(44mm\) and Watch4 Classic \(46mm\) Battery](#) (1)
- [Samsung Galaxy Watch4 \(40mm\) and Watch4 Classic \(42mm\) Battery](#) (1)
- [Precut Adhesive Card](#) (1)

Step 1 — Power down your Galaxy Watch4



- Before starting repairs, take your watch off the charger and power it down.
- Remove the watch band.

Step 2 — Unscrew the back cover



- Use a Tri-point Y000 screwdriver to remove the four 4.0 mm-long screws.

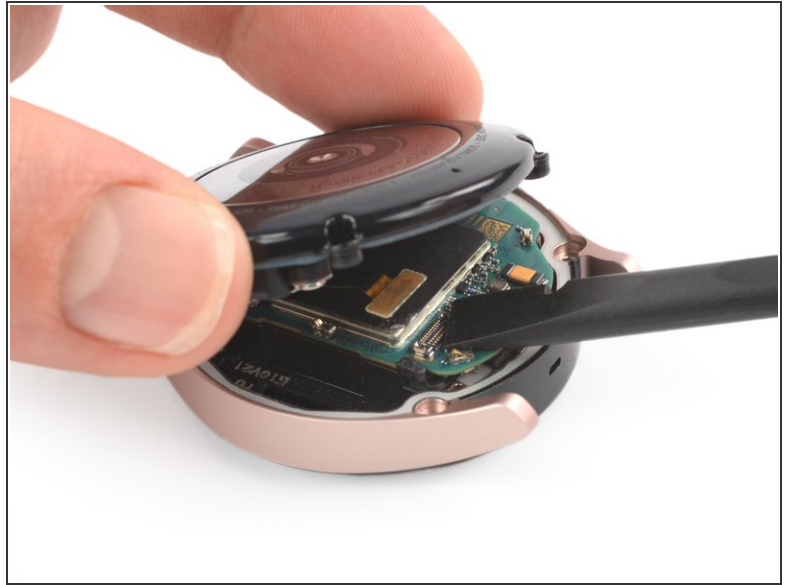
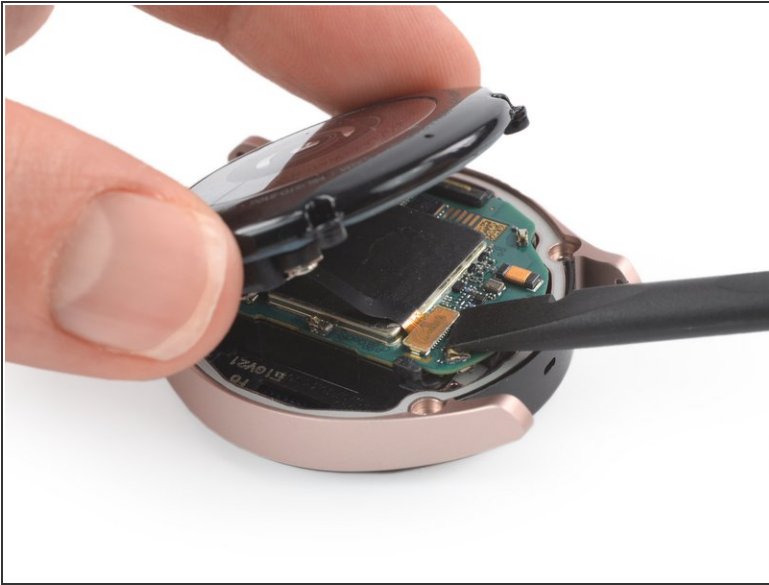
Step 3 — Wedge open the back cover



- Insert an opening tool into the seam between the back cover and the metal housing.
- Twist the opening tool to create a gap.

⚠ Don't try to remove the back cover all the way yet. The sensor flex cable is still connected to the motherboard.

Step 4 — Disconnect the sensor flex cable



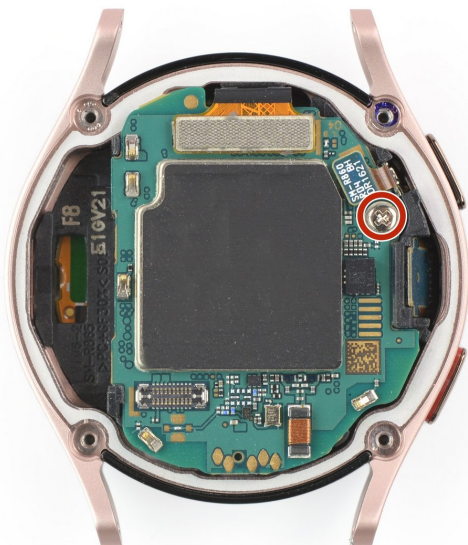
- Lay the watch face down.
- Carefully swing open the back cover by folding the back cover to the opposite site of the created gap.
- Use the flat end of a spudger to pry up and disconnect the sensor flex cable from the motherboard.

Step 5 — Remove the back cover



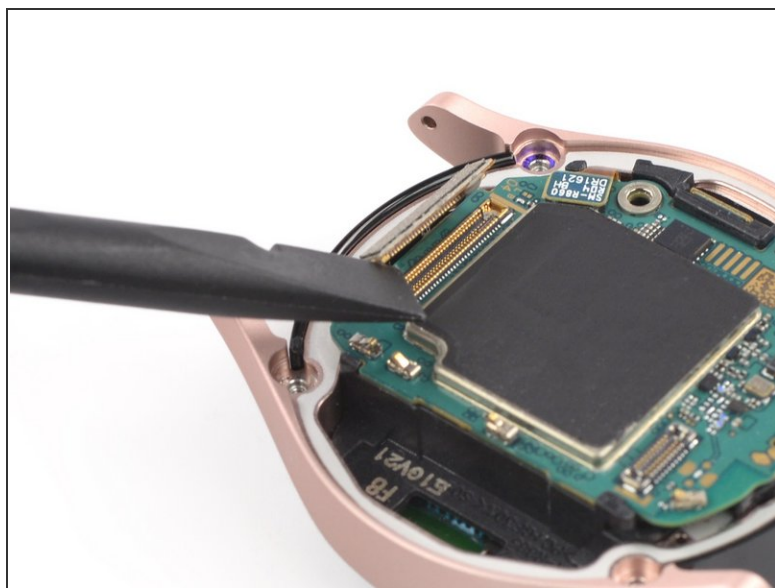
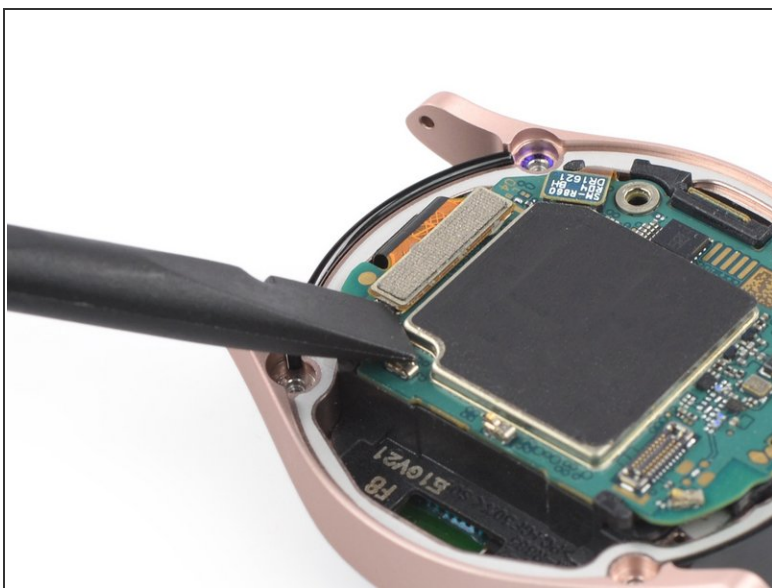
- Remove the back cover.
- ★ Make sure the rubber gasket is undamaged. If damaged, replace it with a new one during reassembly to maintain proper water resistance.

Step 6 — Unscrew the motherboard



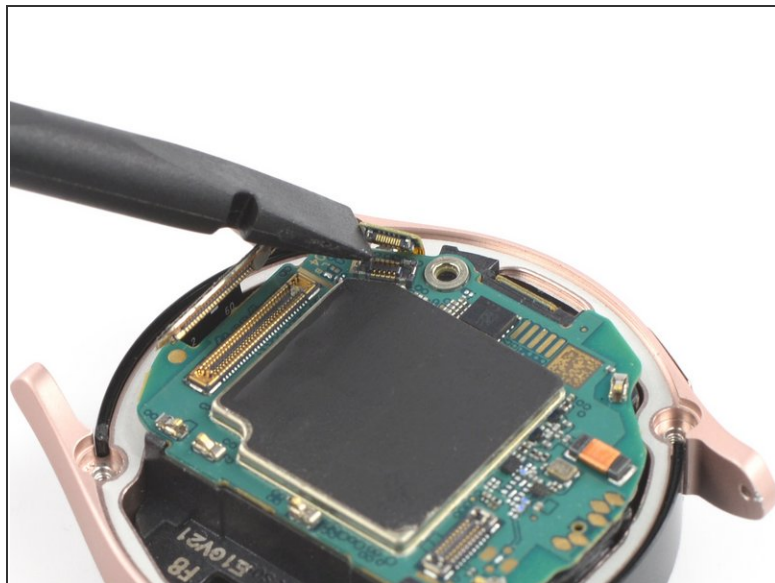
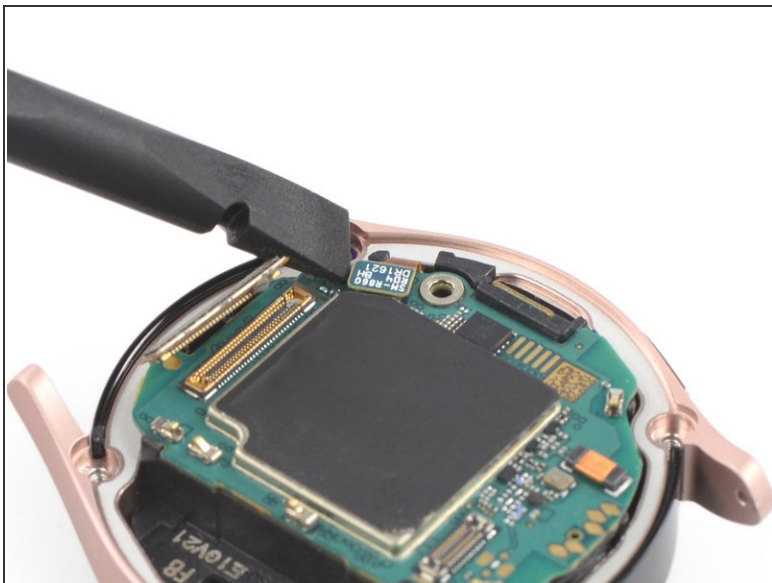
- Use a Phillips screwdriver to remove the 4.4 mm-long screw securing the motherboard.

Step 7 — Disconnect the display flex cable



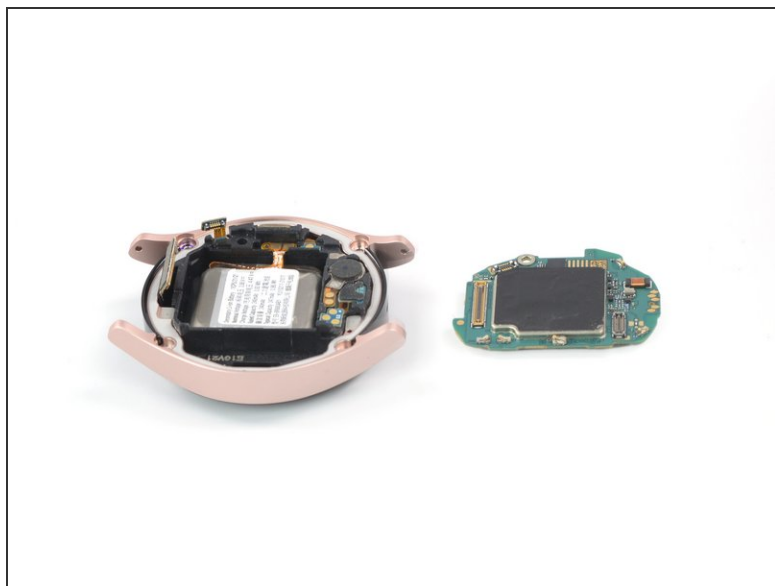
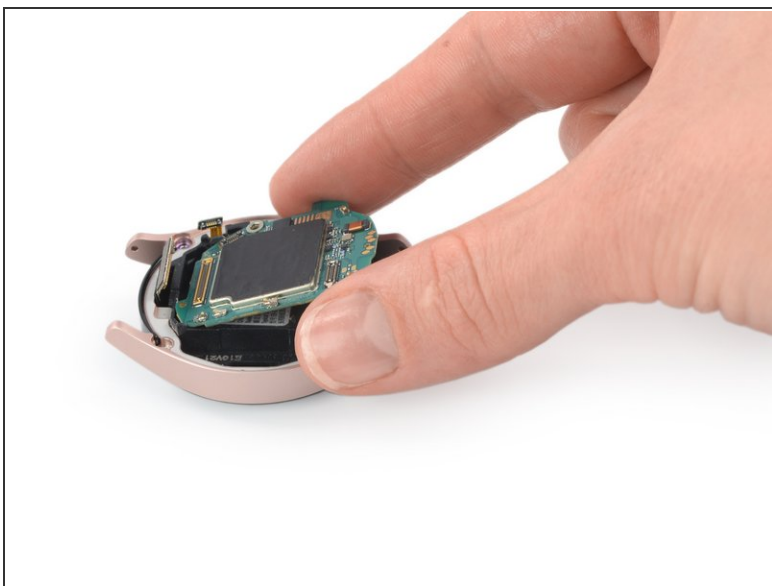
- Use the flat end of a spudger to disconnect the display flex cable.

Step 8 — Disconnect the side buttons



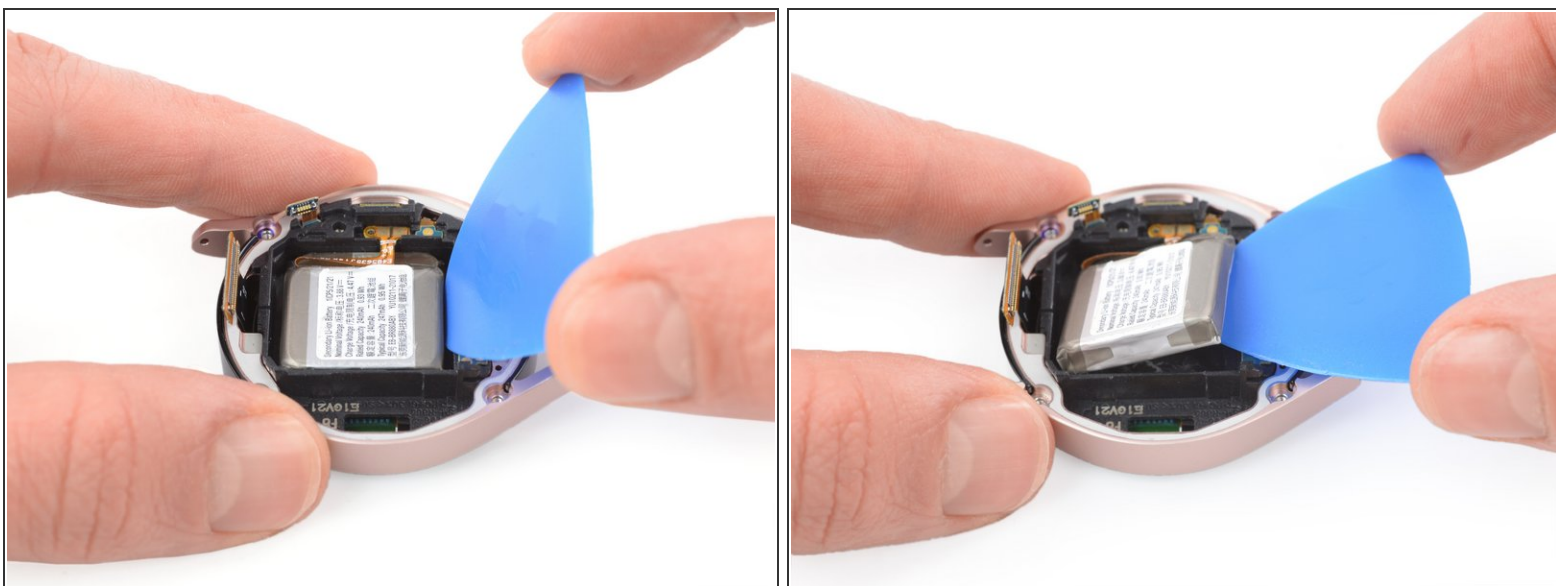
- Use a spudger to disconnect the flex cable of the crown buttons.

Step 9 — Remove the motherboard



- Use your fingers to lift the motherboard out from the watch assembly towards the bottom of the watch.

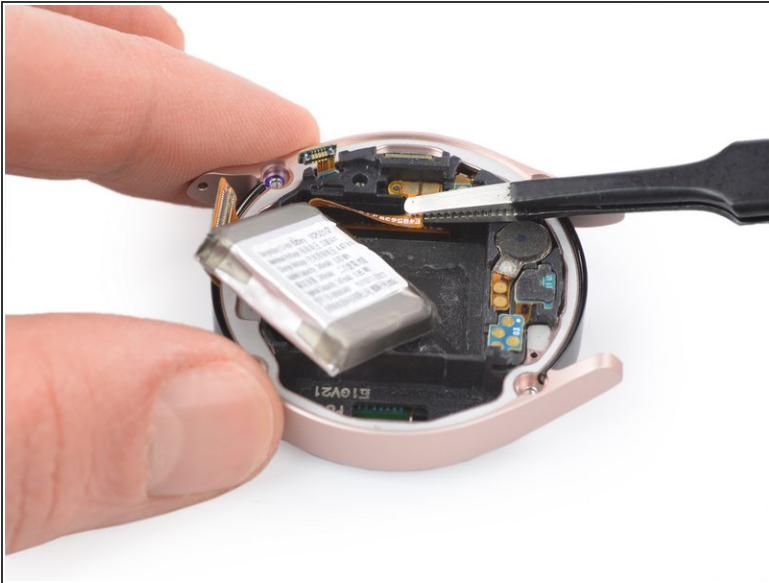
Step 10 — Lever up the battery



- Place the tip of an opening pick in the small gap between the plastic frame and the battery, opposite to the display cable.
- Carefully lever the battery up and out of its recess.

⚠ Don't try to remove the battery completely yet, as its connector is still adhered to the core assembly.

Step 11 — Release the battery connector



- Lift the battery up a little in order to access its glued down connector cable.
- Use a pair of blunt tweezers to lift up the battery connector which is secured with some light adhesive.
- ☑ You will most likely be able to re-use the adhesive to fix the new battery in place. If not replace it with [double sided or pre-cut adhesive tape](#).

Step 12 — Remove the battery



- Remove the battery.

If possible, turn on your device and test your repair before installing new adhesive and resealing.

Secure the new battery with pre-cut adhesive or double-sided adhesive tape. In order to position it correctly, apply the new adhesive into the device at the places where the old adhesive was located, not directly onto the battery. Press the new battery firmly into place.

To reassemble your device, follow these instructions in reverse order.

For optimal performance, **calibrate your newly installed battery**: Charge it to 100% and keep charging it for at least 2 more hours. Then use your device until it shuts off due to low battery. Finally, charge it uninterrupted to 100%.

Take your e-waste to an [R2 or e-Stewards certified recycler](#).

Repair didn't go as planned? Try some [basic troubleshooting](#), or ask our [Answers community](#) for help.