



# Tile Sticker Teardown

Written By: Andrew S



# INTRODUCTION

A look at Tile's small new tracker

## Step 1 — Tile Sticker Teardown



- Use a spudger or flathead screwdriver to remove the outer ring
- I removed the rubber button cover as well, but this is not necessary.

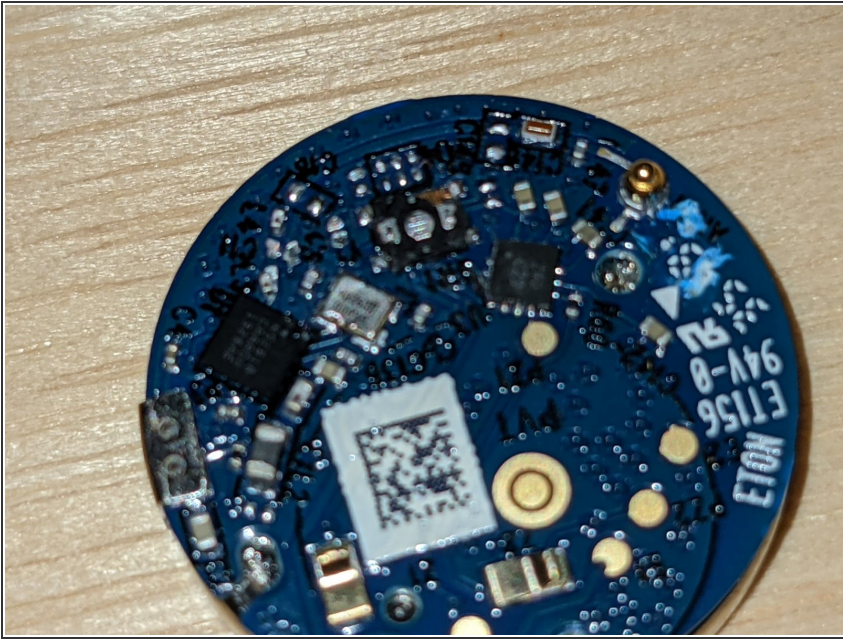
## Step 2



- Use a flathead screwdriver to pry the two halves of the case apart from each other
- The technique I used is to find a small hole in the casing and use a very small flathead screwdriver with upward/downward force.



### Step 3



- Pull the electronics out of the casing.

### Step 4



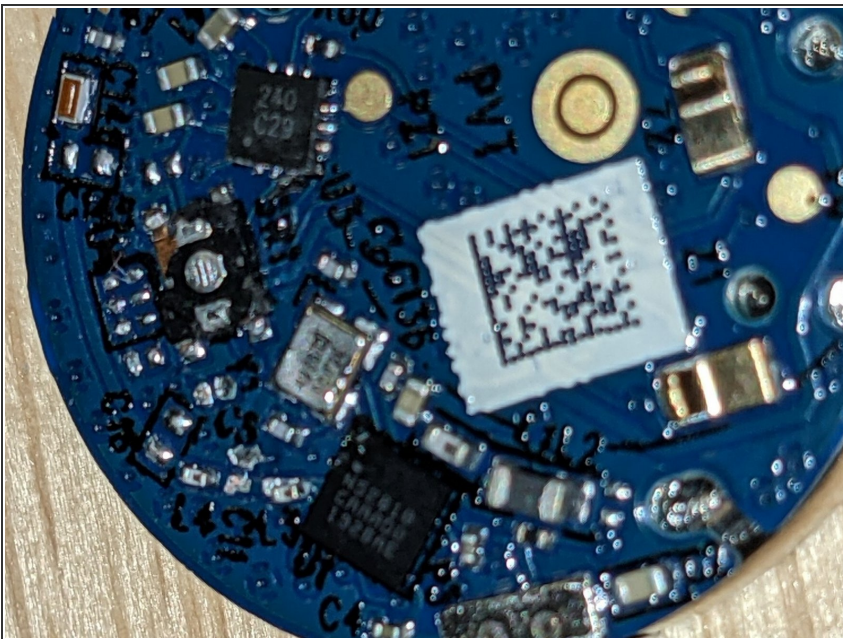
- At the bottom is the power source - A soldered-in CR2032 battery.

## Step 5



- Hidden away in the top casing is a piezoelectric speaker.

## Step 6



- The main chips:
- 240 C29
- N(RF)52810 CAAAD0 1928AE

## Step 7



- The N(RF)52820 is a Bluetooth 5/ANT/2.4GHz SoC made by Nordic Semiconductor
- Product Page: <https://www.nordicsemi.com/Products/nRF5...>

To reassemble your device, follow these instructions in reverse order.