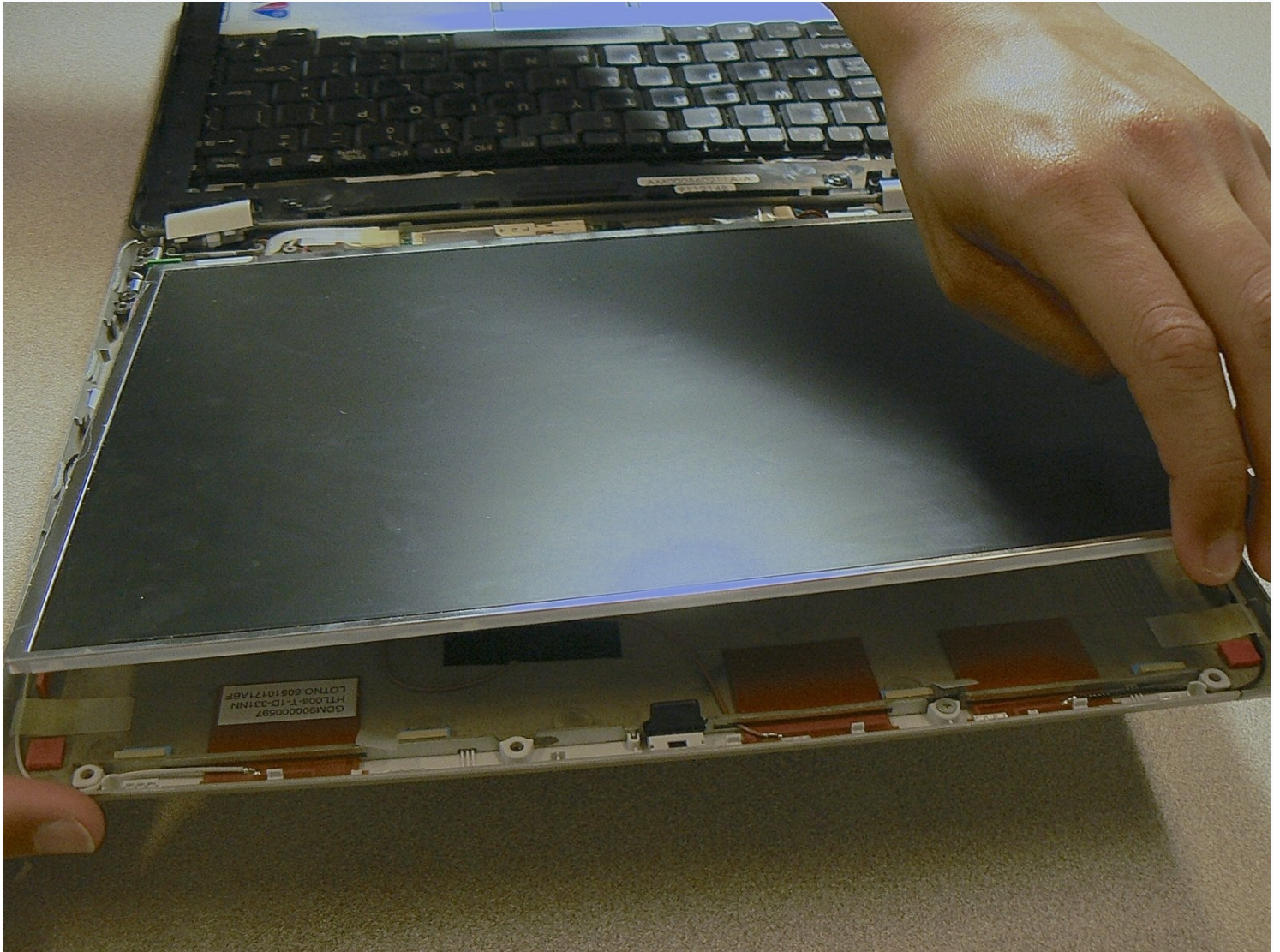




Toshiba Portege M300 LCD Replacement

This guide will go through the steps needed to...

Written By: Alison Wendt



INTRODUCTION

This guide will go through the steps needed to install a new LCD panel. It's a fairly quick procedure, but it does require some care as it involves very delicate components and short wires that aren't immediately visible. This should be a fairly easy repair if you take it slowly and don't move anything around too roughly—displays are delicate components! Good luck!

TOOLS:

[iFixit Opening Tool](#) (1)

[Phillips #000 Screwdriver](#) (1)

[Tweezers](#) (1)

Step 1 — Battery



- Turn the computer over onto its back.

Step 2



- Slide the lock on the left side to the unlock position.
- Slide the lock on the right side to the unlock position until there is a clicking sound.

Step 3



- Remove the battery by sliding it away from the laptop.
- ⓘ Make sure the two locks from the previous step are in the unlocked position while sliding the battery away.

Step 4 — LCD



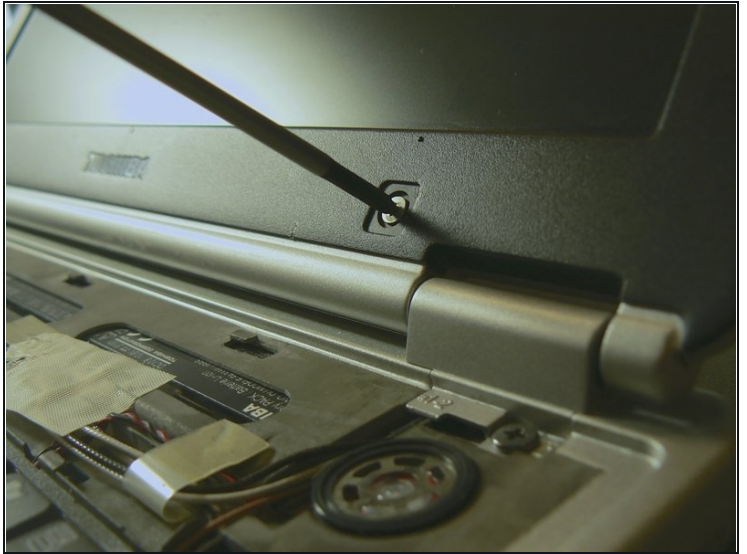
- Use a plastic opening tool to unsnap the right hand side speaker cover.

Step 5



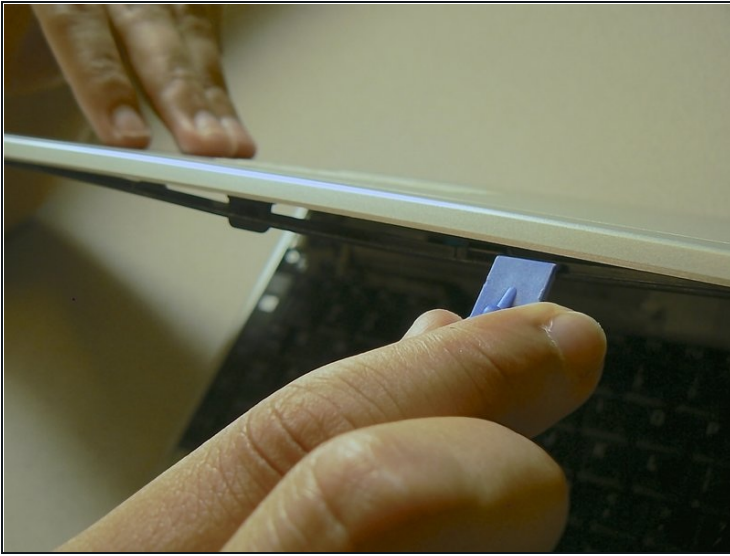
- Remove the rest of the cover by sliding it to the right and lifting the right edge.

Step 6



- Remove all eight plastic circular covers on the plastic screen bezel.
- ① Only seven of these plastic covers will contain screws underneath.
- Unscrew all seven screws with a Phillips head #000 screwdriver.

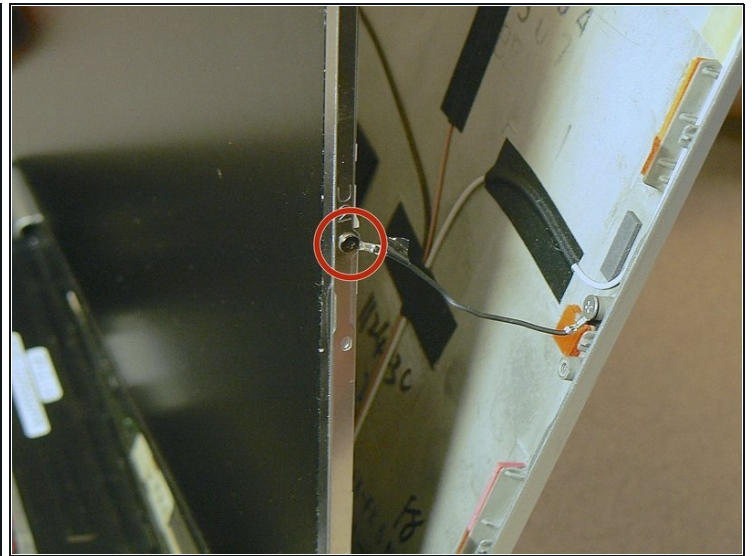
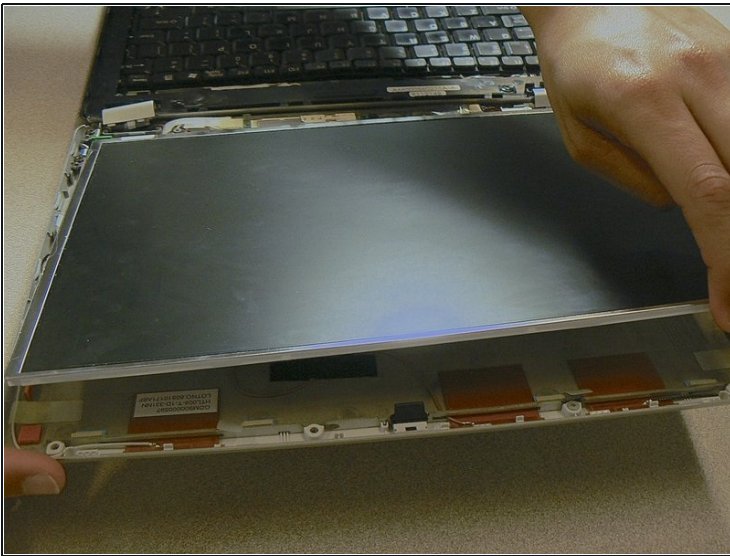
Step 7



- Use a plastic opening tool to separate the screen bezel from the rest of the case.
- Pull at the top edge of the LCD to separate it from the top part of the case.

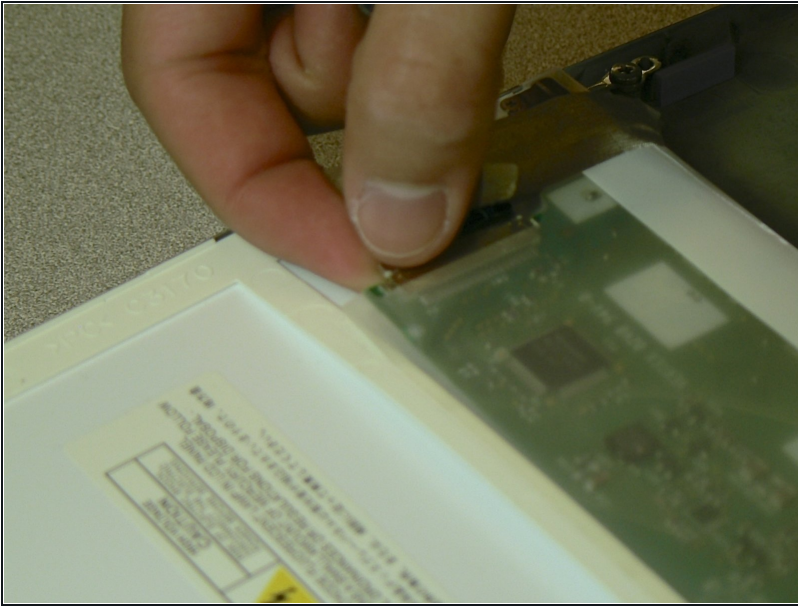
⚠ Only separate the casing and the LCD by an inch—there are still wires connecting them.

Step 8



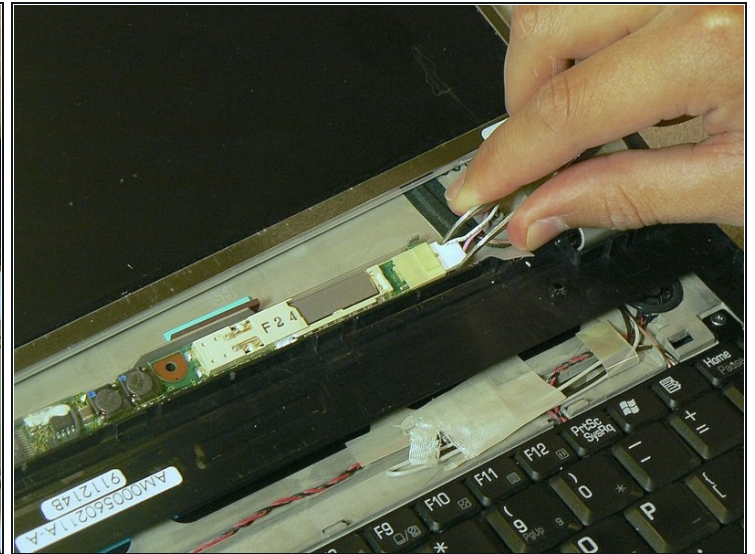
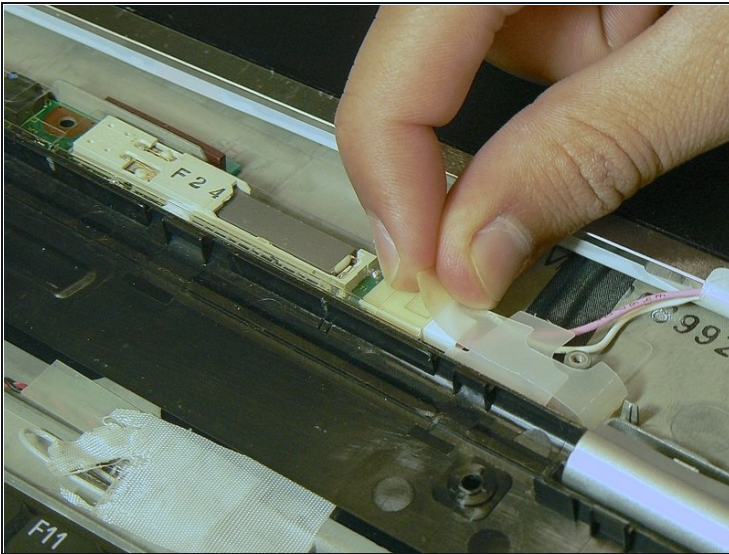
- Use a Phillips #000 to unscrew the one 2.8 mm fine thread screw holding the wire connected to the right face of the LCD.

Step 9



- Flip the LCD over onto the back.
- Gently pull the connection on the corner of the LCD to disconnect.

Step 10



- Remove the tape connecting LCD to the inverter.
- Use [tweezers](#) to remove the LCD cable from the inverter.

To reassemble your device, follow these instructions in reverse order.