



PlayStation 5 Faceplates Replacement

Follow this guide to remove or replace the...

Written By: Clay Kim



INTRODUCTION

Follow this guide to remove or replace the faceplates, or covers, on your PlayStation 5.

Before you begin, completely **power down and unplug all cables** from your console. Remember to follow general electrostatic discharge (ESD) safety procedures while repairing the console.

TOOLS:

Flathead 3/32" or 2.5 mm Screwdriver (1)

PARTS:


PlayStation 5 Front Panel (1)

Step 1 — Remove the stand screw



- If your PlayStation 5 is in its vertical orientation, flip it upside down so the stand is facing up.

 If your PlayStation 5 is in its horizontal orientation, skip to Step 6.

 **Work on a flat surface to prevent your PlayStation from falling over.**

- Use a coin or a flathead screwdriver to remove the 26.5 mm-long stand screw.

Step 2 — Remove the vertical stand



- Lift straight up to remove the stand.

Step 3 — Store the stand screw



- Insert the screw into the cubby on the bottom of the stand.

Step 4 — Cap the screw hole



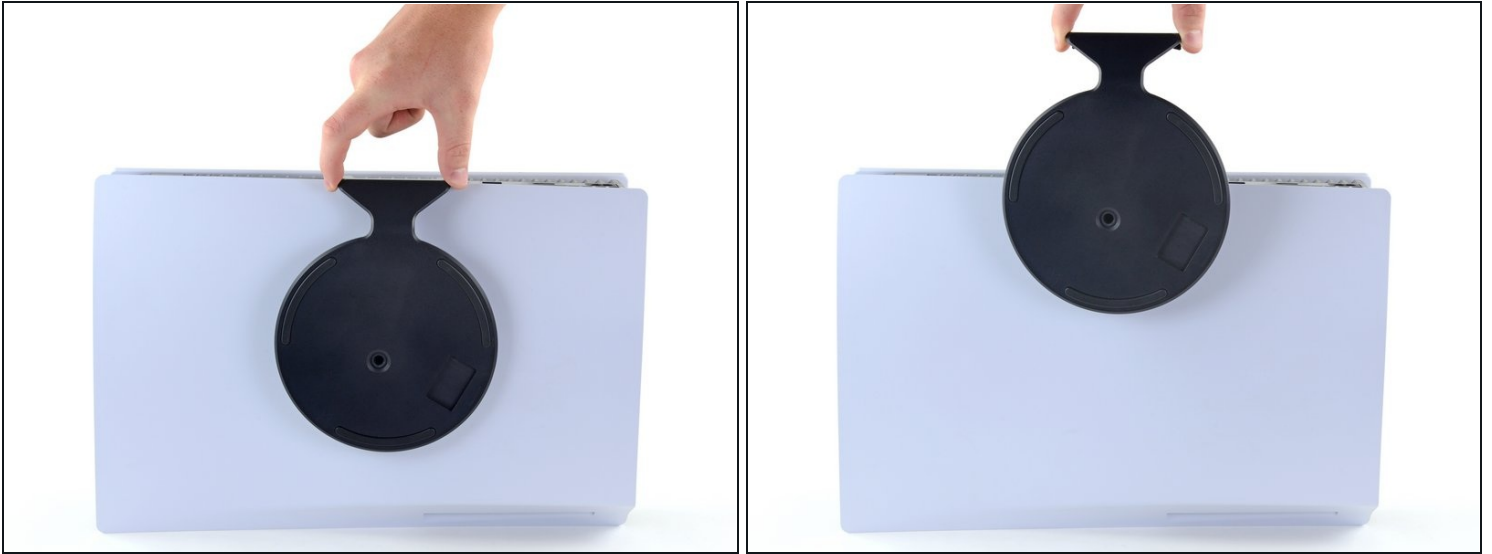
- Use a pair of tweezers or your fingernail to remove the cap from the cubby.
- Use your finger to press the cap into the screw hole.

Step 5 — Close the cubby



- Twist the stand counterclockwise to close the cubby.

Step 6 — Remove the horizontal stand



- If your PlayStation 5 is in its horizontal orientation, rest it on its face with the charging port facing up.
- Lift the stand straight up to remove it.

Step 7 — Remove the left faceplate



- Lift up the corner of the faceplate with the PlayStation logo to unclip it from the case.

Step 8



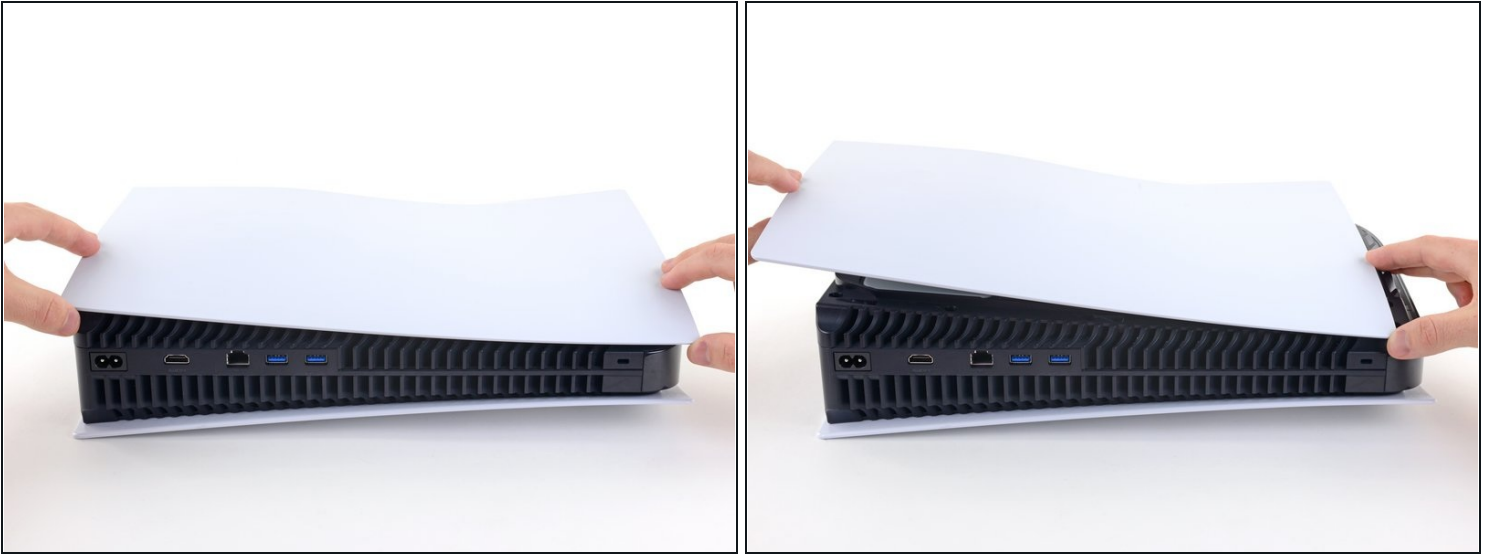
- While lifting up the corner, slide the faceplate towards the bottom of the device.
- Remove the left faceplate.

Step 9 — Remove the right faceplate



- Flip the device over so that the USB and ethernet ports are on the left side from your perspective.
- Lift up the corner of the faceplate to unclip it from the case.

Step 10



- While lifting up the corner, slide the faceplate towards the bottom of the device.
 - Remove the right faceplate.
-

To reassemble your device, follow these instructions in reverse order.

Take your e-waste to an [R2 or e-Stewards certified recycler](#).

Repair didn't go as planned? Try some [basic troubleshooting](#), or ask our PlayStation 5 Answers community for help.