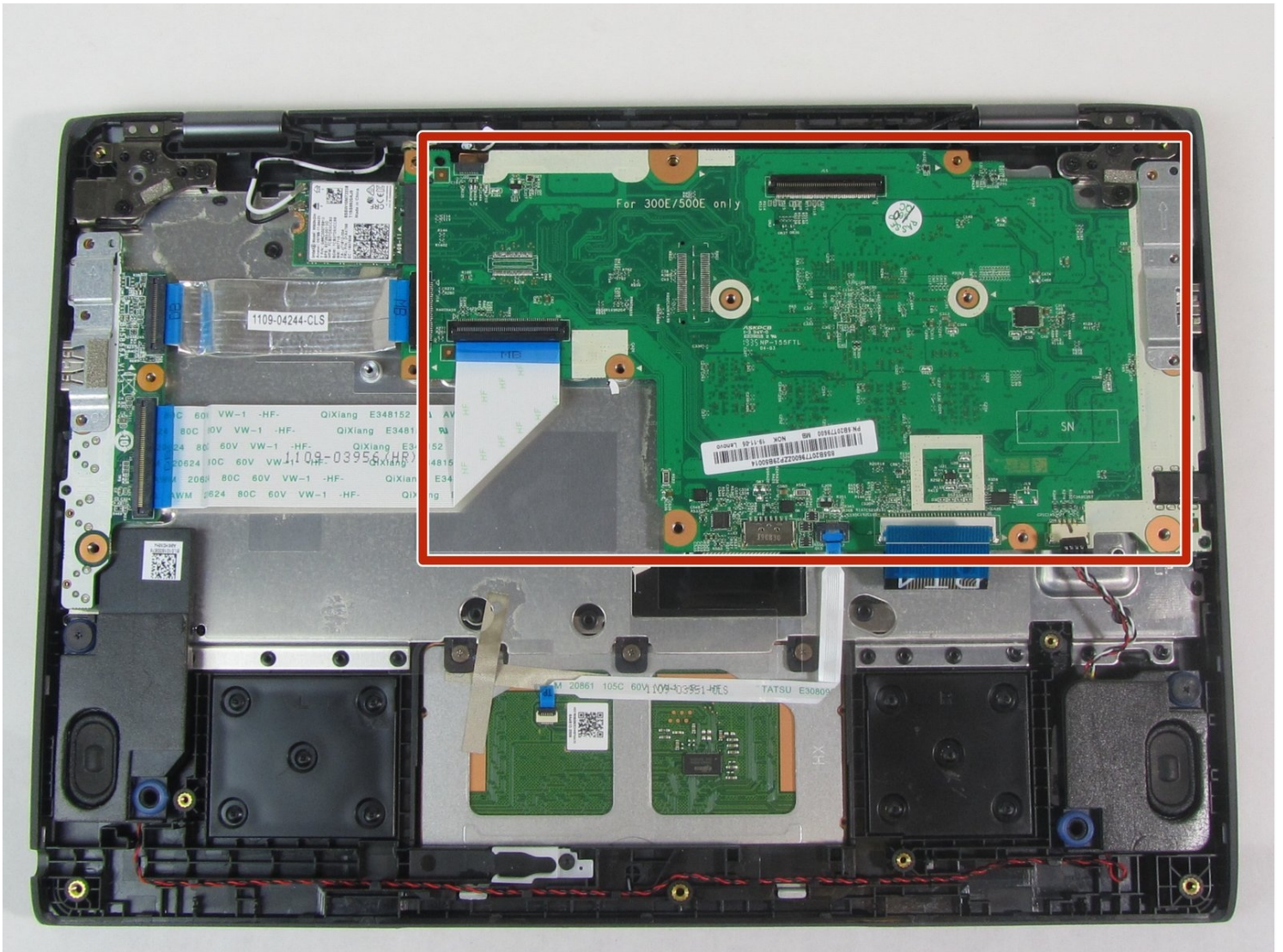




Lenovo 500e Chromebook 2nd Gen Motherboard Replacement

This guide will show you how to replace the...

Written By: Nicolas Lidinsky



INTRODUCTION

This guide will show you how to replace the motherboard in the Lenovo 500e 2nd Gen Chromebook, model number: 81MC005AUS. The motherboard is essentially the brains of the laptop. It has many key components that make the device work properly. If the device is having trouble starting, then refer to our [troubleshooting page](#).

TOOLS:

iFixit Opening Tool (1)
Phillips #0 Screwdriver (1)
Phillips #00 Screwdriver (1)

PARTS:

5B21C75779 - Lenovo Laptop
Motherboard - Genuine (1)
5B21C75778 - Lenovo Laptop
Motherboard - Genuine (1)

Step 1 — Back Panel



- Remove nine 6 mm screws from the bottom cover of the laptop using a Phillips #0 screwdriver.

Step 2



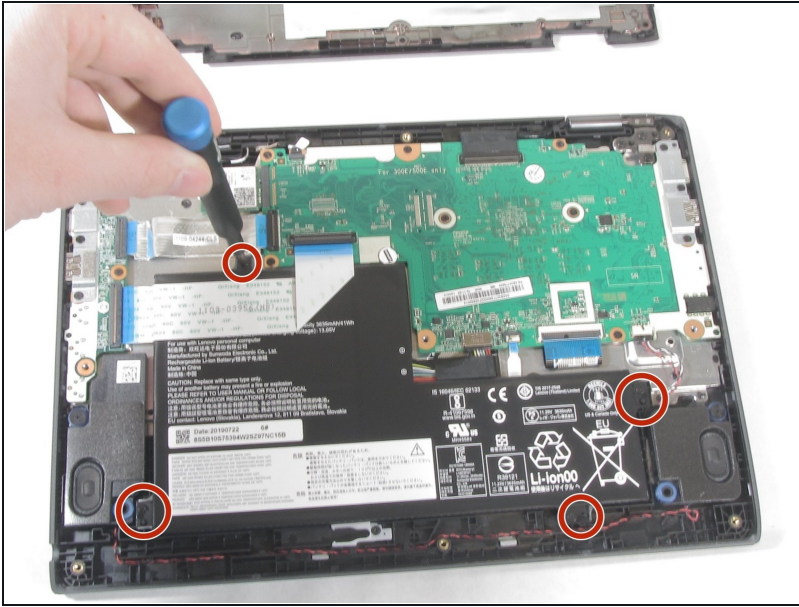
- Remove stylus from the lower left corner of the back panel.

Step 3



- Go along the edge of the back panel with an iFixit opening tool until it pops loose.
- Remove the back panel from the laptop.

Step 4 — Battery



- Remove the four 4 mm Phillips #00 screws holding the battery in.

Step 5



- Use the iFixit opening tool to unplug the battery from the motherboard.

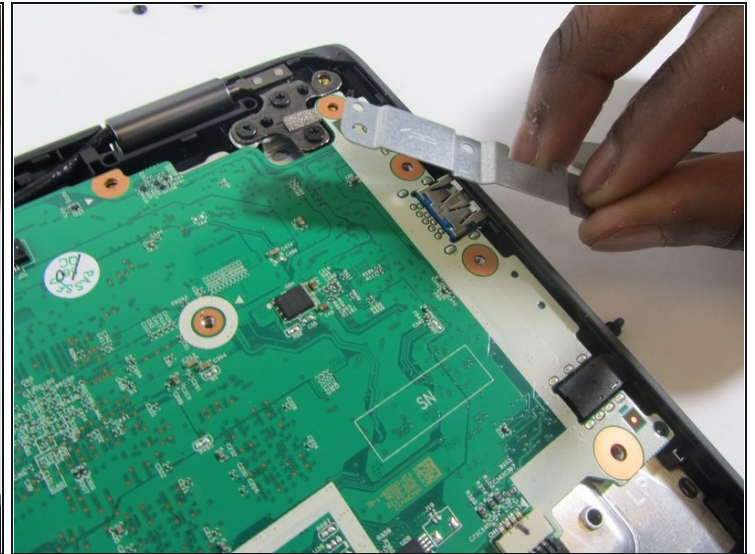
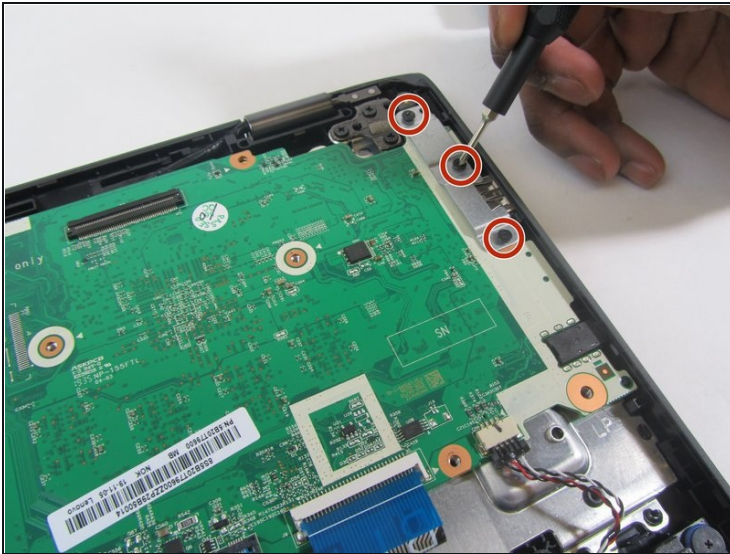
⚠ Potential for device damage: Make sure to be gentle while removing the wire.

Step 6



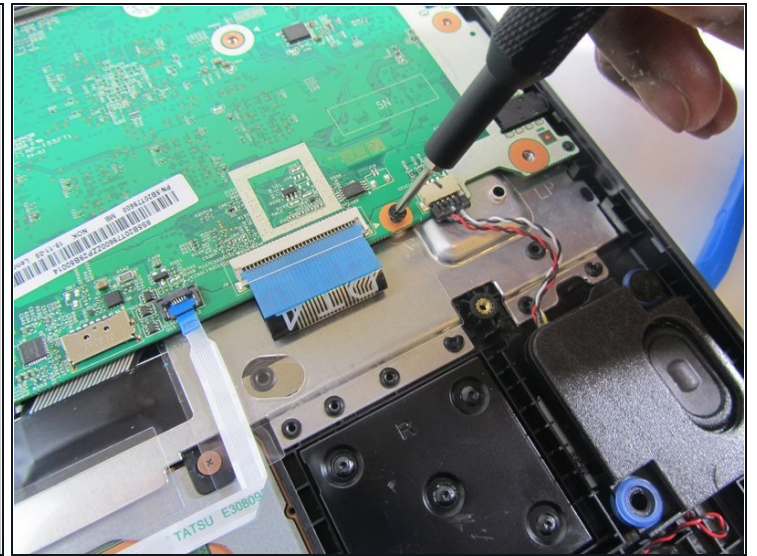
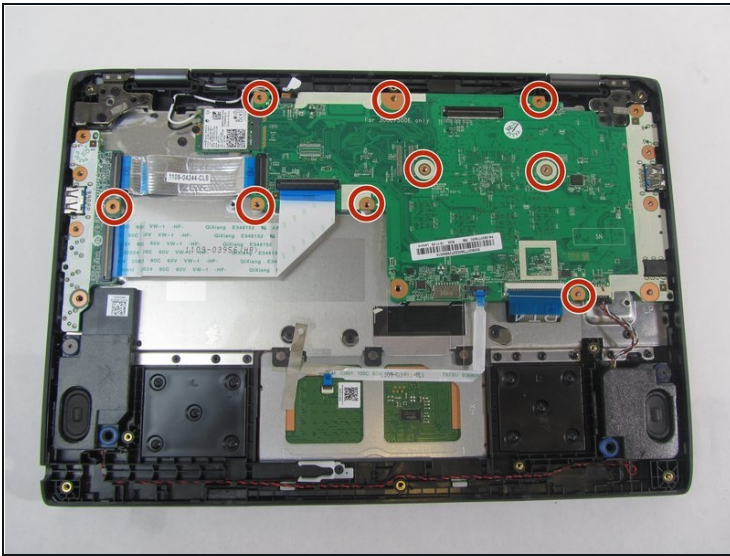
- Remove the battery from the laptop.

Step 7 — Motherboard



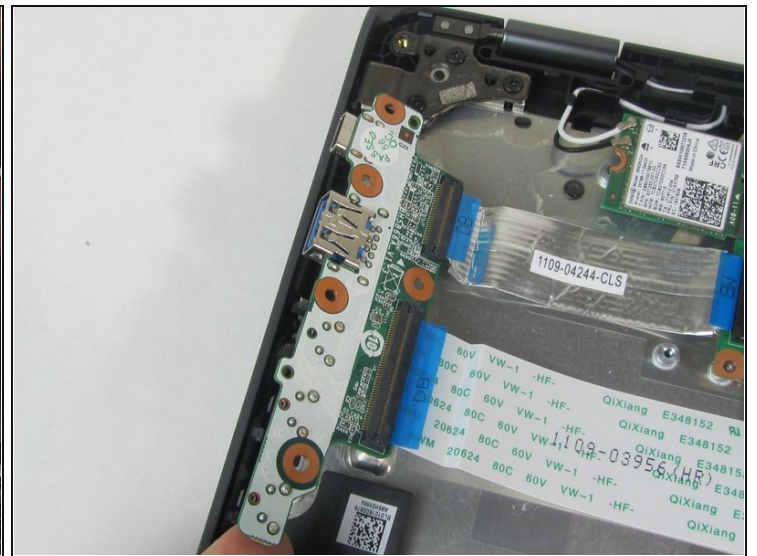
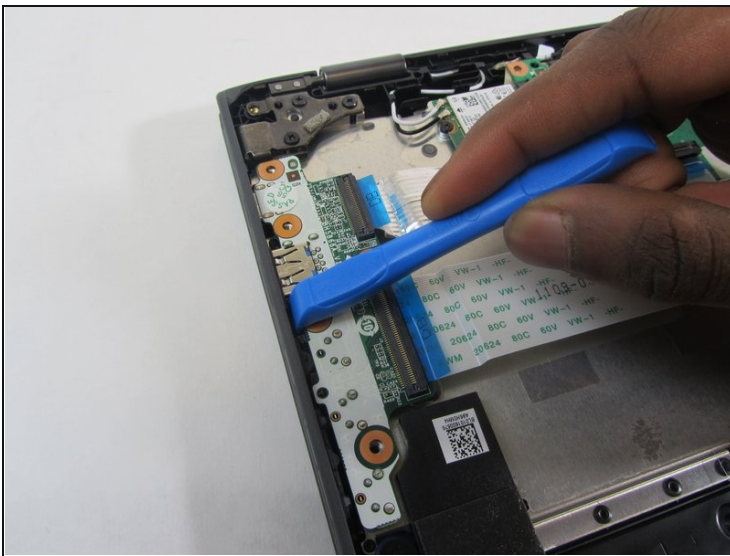
- Remove the three 4 mm screws (six total) from the left and right side brackets using a Phillips #00 screwdriver.
- Gently remove the metal brackets from the motherboard.

Step 8



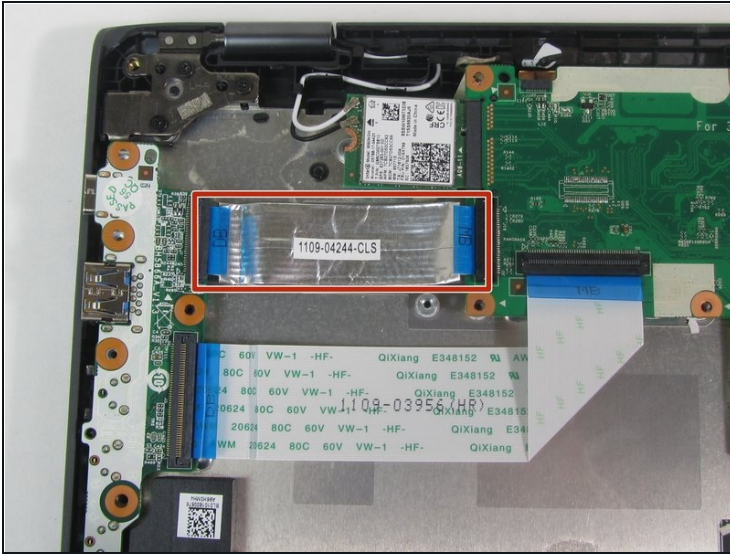
- Remove the nine 4 mm screws from the motherboard using a Phillips #00 screwdriver.

Step 9



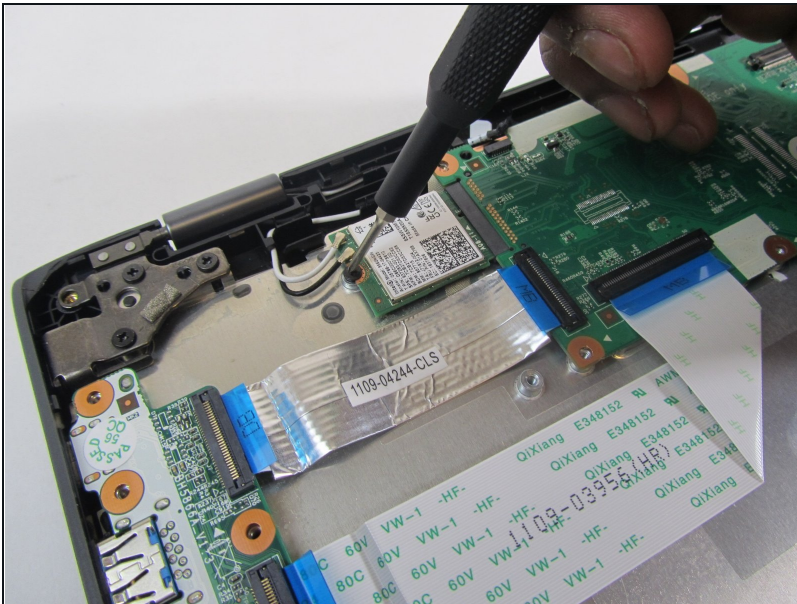
- Gently remove the USB port from the side housing using an iFixit opening tool.

Step 10



- Gently peel the metal strip away from the metal backing.

Step 11



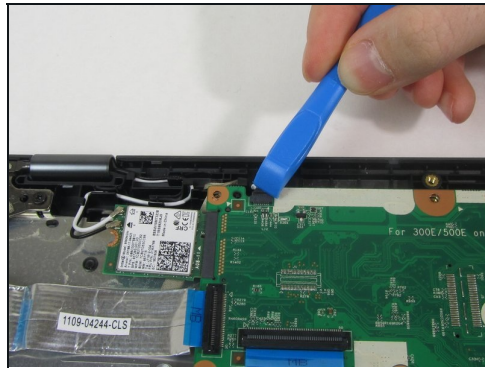
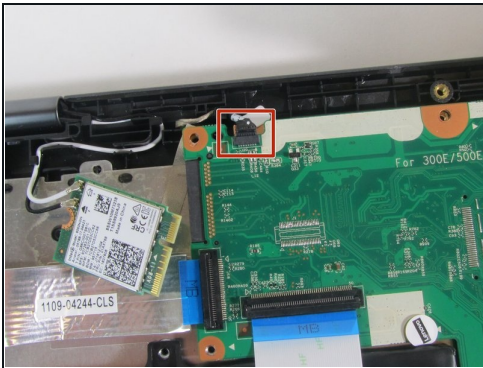
- Remove the single 3 mm screw that holds the Wi-Fi card in place using a Phillips #00 screwdriver.

Step 12



- Disconnect the Wi-Fi card from the motherboard using an iFixit opening tool.

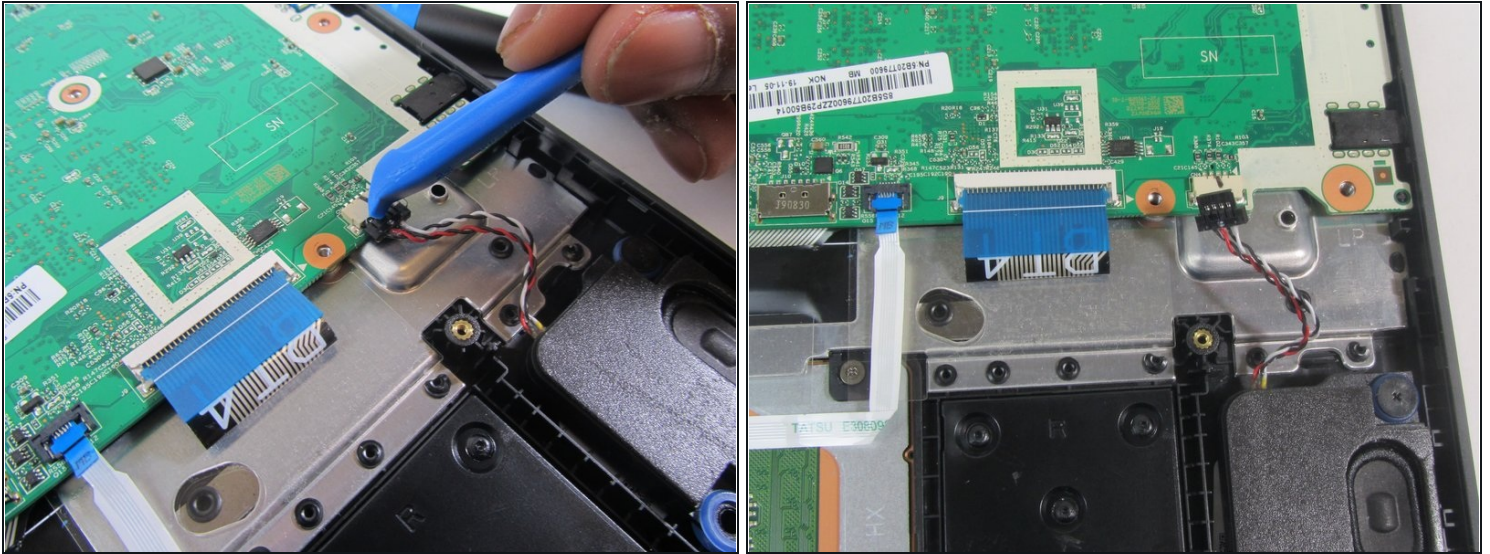
Step 13



- Using an iFixit opening tool, disconnect the camera cable.

⚠ Potential for device damage: Be gentle while removing the wire.

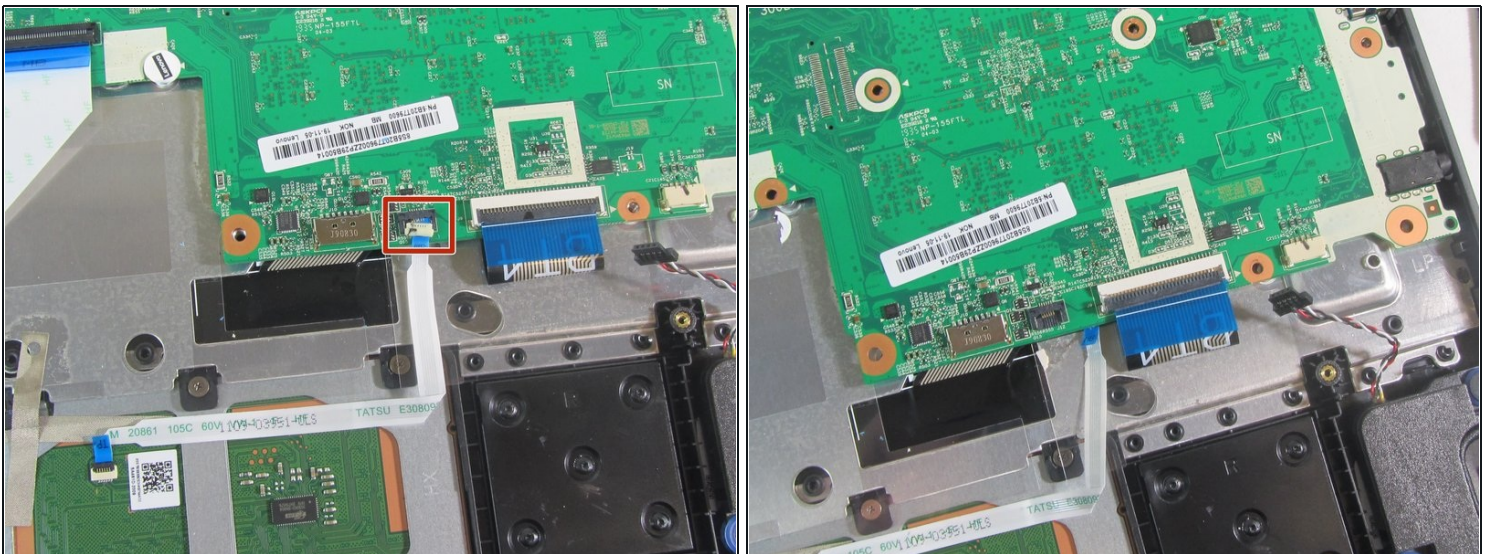
Step 14



- Using an iFixit opening tool, detach the speaker wiring from the motherboard.
- Set speakers aside for reinstallation.

⚠ Potential for device damage: Be gentle while removing the wire.

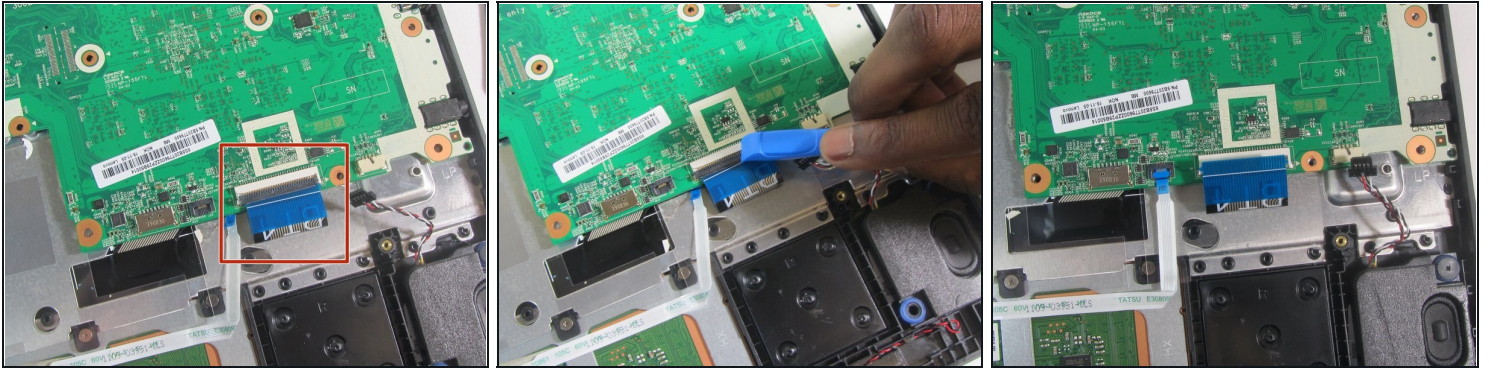
Step 15



- Using an iFixit opening tool, detach the track pad connector from the motherboard.

⚠ Potential for device damage: Be gentle while detaching the connector.

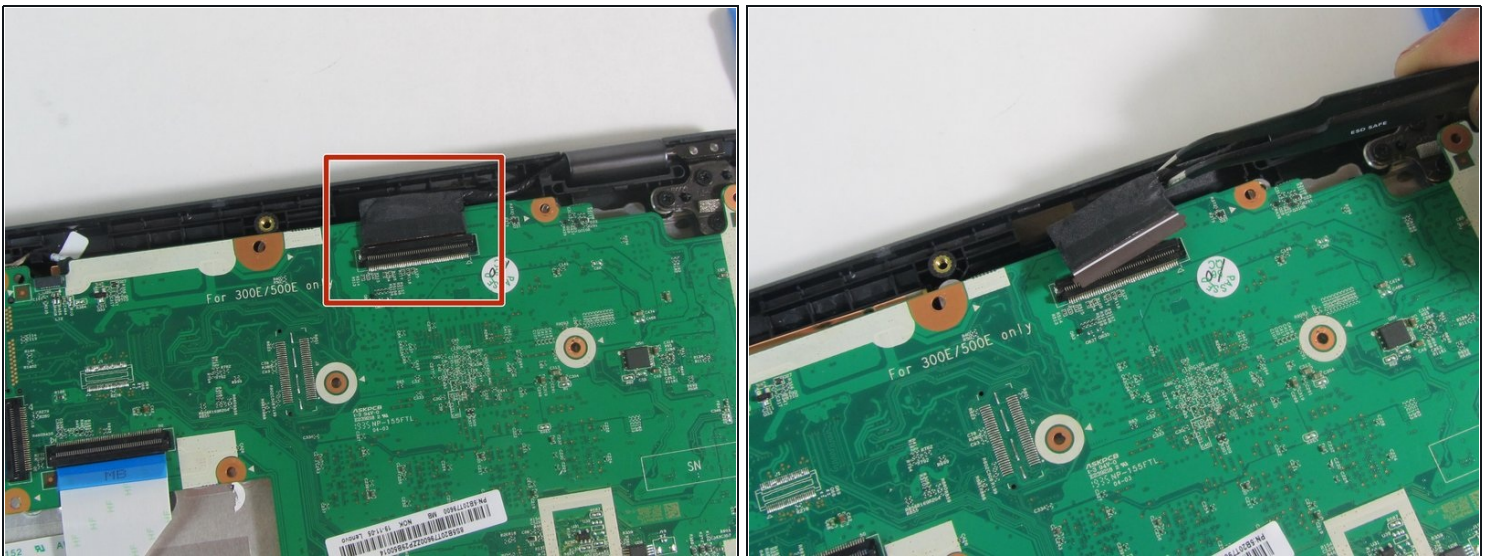
Step 16



- Using an iFixit opening tool, detach the keyboard cable from the motherboard.

⚠ Potential for device damage: Be gentle when detaching the cable.

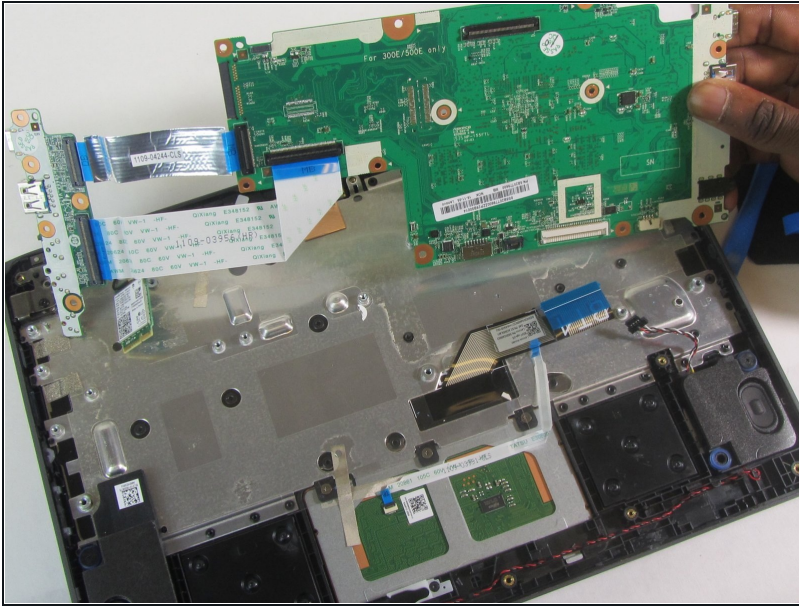
Step 17



- Using tweezers, disconnect the black cable from the motherboard.

⚠ Potential for device damage: Be gentle while detaching the cable.

Step 18



- Gently remove the motherboard from the laptop.

To reassemble your device, follow these instructions in reverse order.